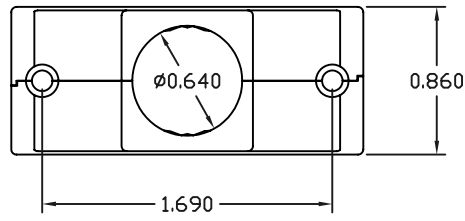
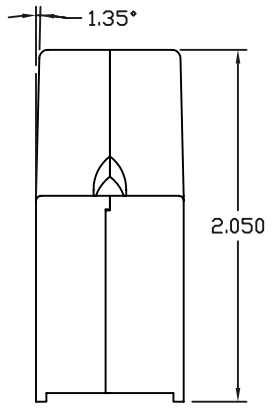
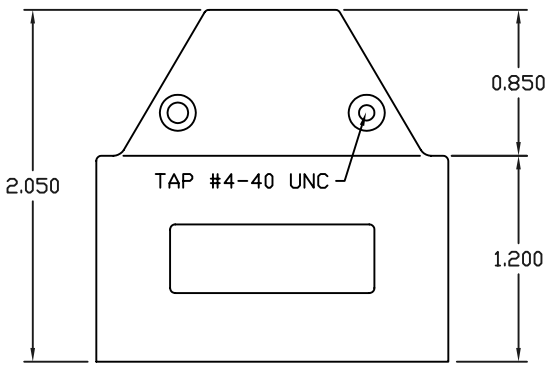
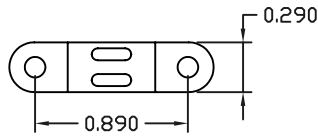
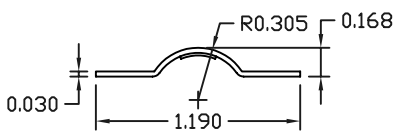
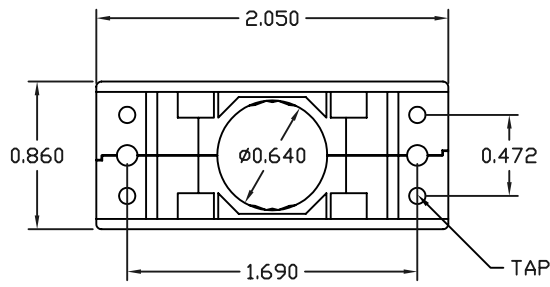

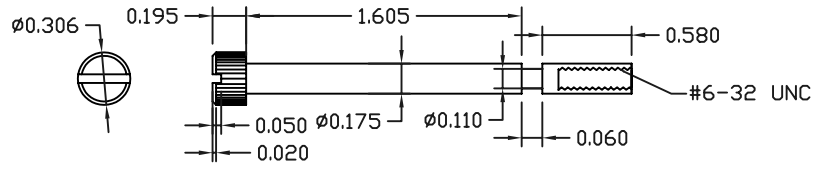
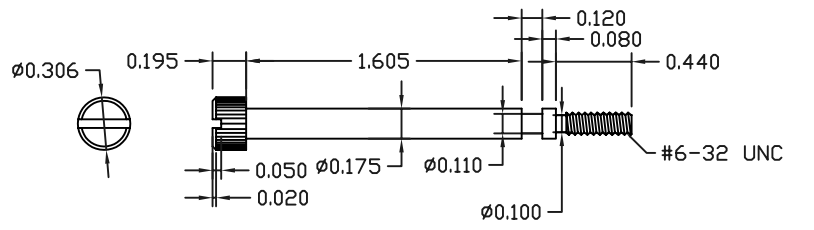


REV	DATE	DESCRIPTION	APP




  
 4-40 UNC
   
 THREAD (VARIED LENGTHS)
   
 2 - COVER SCREWS
   
 2 - STRAIN RELIEF SCREWS
   
 4 - INSULATOR SCREWS



SCREW NOTES:
   
 1. MATERIAL: STEEL
   
 2. FINISH: NICKEL PLATED
   
 3. MEDIUM KNURL

CONNECTOR COVER NOTES:
   
 1. MATERIAL: ZINC (DIE CAST)
   
 2. FINISH: NICKEL PLATED

CLAMP NOTES:
   
 1. MATERIAL: CR STEEL
   
 2. FINISH: NICKEL PLATED

THIS IS A CONTROLLED DOCUMENT AND IS
   
 SUBJECT TO CHANGE. CONTACT NORTHERN
   
 TECHNOLOGIES ENGINEERING FOR THE
   
 LATEST REVISION.

UNLESS OTHERWISE SPECIFIED	SIGNATURES	DATE	Northern Technologies		
1. ALL DIMENSIONS ARE IN INCHES (MM) 2. DIMENSIONS ARE TYPICAL	DRAWN JSD	07-FEB-07	THIS DRAWING IS THE PROPERTY OF NORTHERN TECHNOLOGIES AND SHOULD NOT BE REPRODUCED WITHOUT NORTHERN TECHNOLOGIES WRITTEN PERMISSION.		
	CHECKED SCN	07-FEB-07			
	ENG		PART NUMBER N28E610000		
	ISSUED	07-FEB-07	DESCRIPTION CM V.35 COVER Ni PKG		
			SHEET 1	CODE 7100_180	DWG NO. 7100-500-180
			SCALE N.T.S.		SHEET 1 OF 1