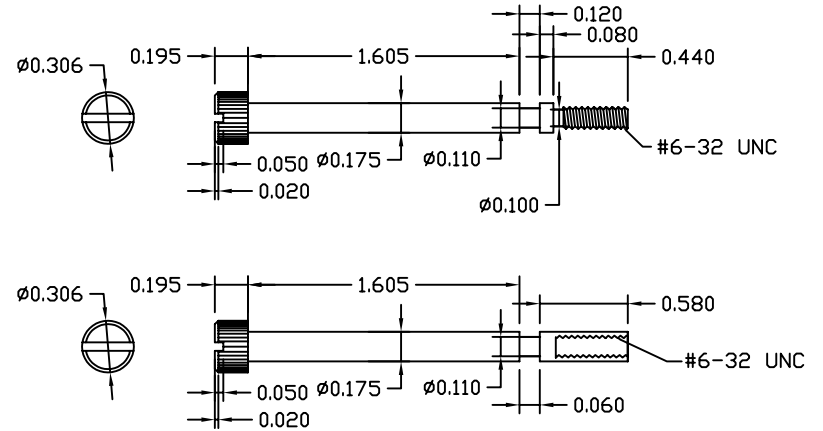
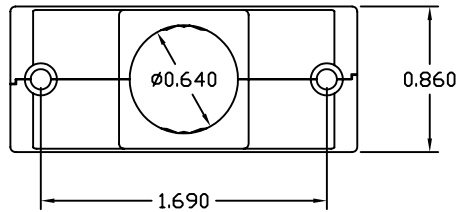
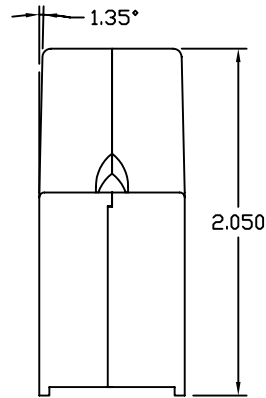
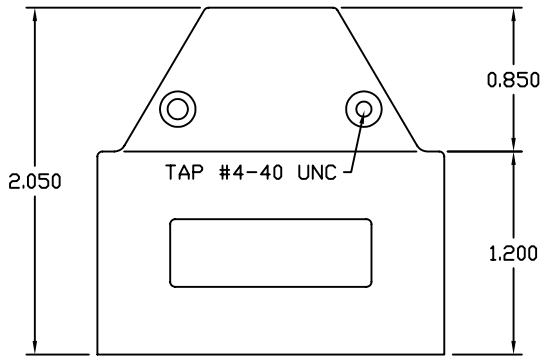
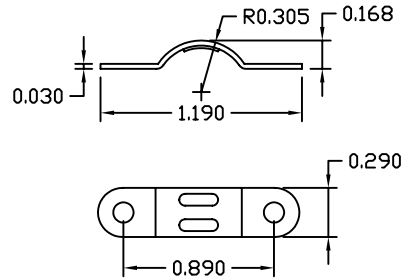
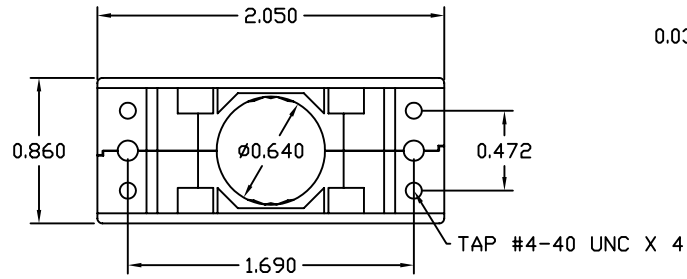


REV	DATE	DESCRIPTION	APP



SCREW NOTES:

1. MATERIAL: STEEL
2. FINISH: NICKEL PLATED
3. MEDIUM KNURL

CONNECTOR COVER NOTES:

1. MATERIAL: ZINC (DIE CAST)
2. FINISH: NICKEL PLATED

CLAMP NOTES:

1. MATERIAL: CR STEEL
2. FINISH: NICKEL PLATED

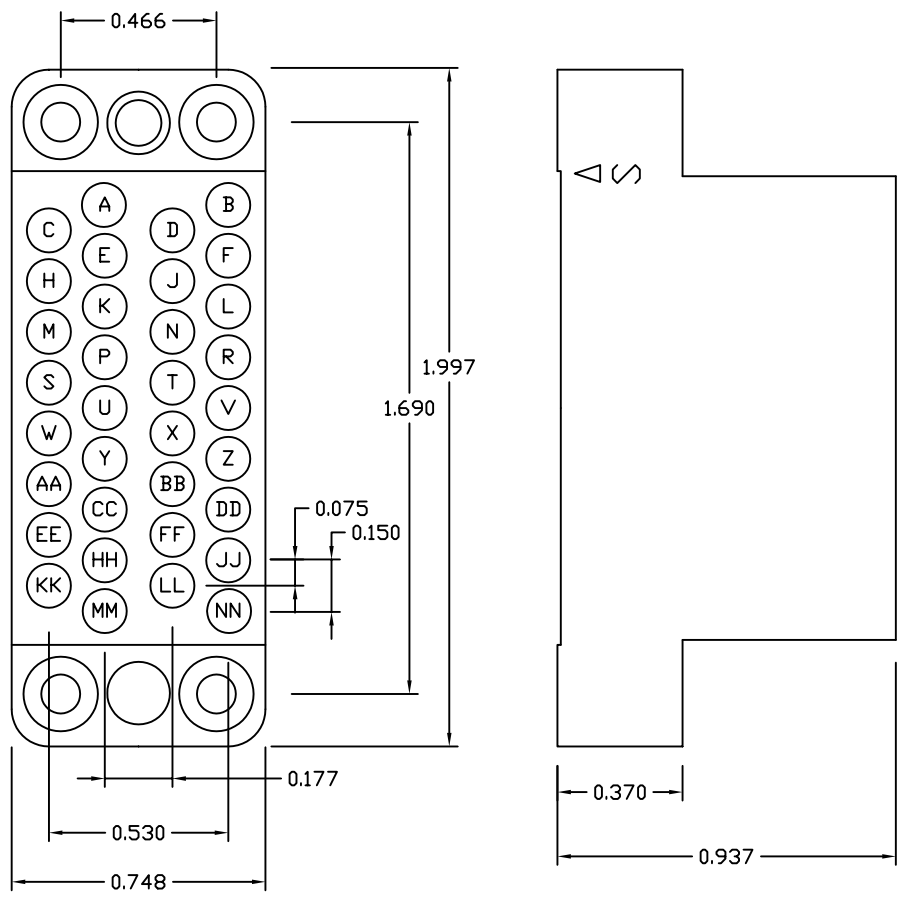


- 2 - COVER SCREWS
- 2 - STRAIN RELIEF SCREWS
- 4 - INSULATOR SCREWS

THIS IS A CONTROLLED DOCUMENT AND IS SUBJECT TO CHANGE. CONTACT NORTHERN TECHNOLOGIES ENGINEERING FOR THE LATEST REVISION.

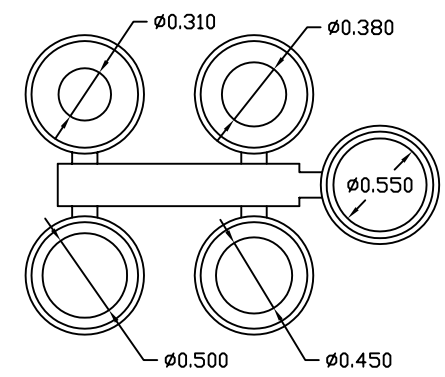
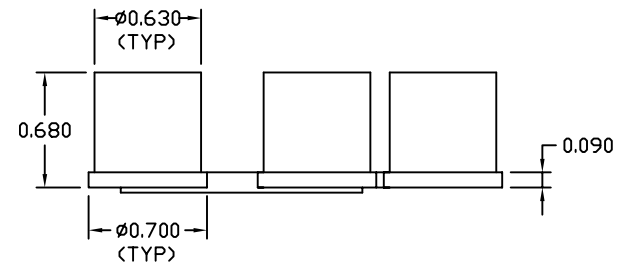
UNLESS OTHERWISE SPECIFIED	SIGNATURES	DATE	Northern Technologies		THIS DRAWING IS THE PROPERTY OF NORTHERN TECHNOLOGIES AND SHOULD NOT BE REPRODUCED WITHOUT NORTHERN TECHNOLOGIES WRITTEN PERMISSION.
1. ALL DIMENSIONS ARE IN INCHES (MM) 2. DIMENSIONS ARE TYPICAL	DRAWN JSD	07-FEB-07	PART NUMBER N28E611001		
	CHECKED SCN	07-FEB-07	DESCRIPTION V.35 FEMALE COV/CON KIT NI		
	ISSUED	07-FEB-07	SHEET 1	CODE 7100_166	DWG NO. 7100-500-166
			SCALE N.T.S.		SHEET 1 OF 2

REV	DATE	DESCRIPTION	APP



FRONT VIEW

- INSULATOR NOTES:
1. MATERIAL: THERMOPLASTIC
 2. COLOR: BLACK



- COMPRESSION INSERT NOTES:
1. MATERIAL: PVC
 2. COLOR: BLACK
 3. DURDMETER: 65 (TYPE A)

THIS IS A CONTROLLED DOCUMENT AND IS SUBJECT TO CHANGE. CONTACT NORTHERN TECHNOLOGIES ENGINEERING FOR THE LATEST REVISION.

UNLESS OTHERWISE SPECIFIED	SIGNATURES	DATE	Northern Technologies		THIS DRAWING IS THE PROPERTY OF NORTHERN TECHNOLOGIES AND SHOULD NOT BE REPRODUCED WITHOUT NORTHERN TECHNOLOGIES WRITTEN PERMISSION.
1. ALL DIMENSIONS IN MM. 2. DIMENSIONS SHOWN ARE TYPICAL. 3. MATERIAL: PBT & GLASS FIBRE UL94V-0.	DRAWN JSD	07-FEB-07	PART NUMBER N28E611001		DESCRIPTION V.35 FEMALE COV/CON KIT NI
	CHECKED SCN	07-FEB-07	SHEET 2		
	ISSUED	07-FEB-07	CODE 7100_166	DWG NO. 7100-500-166	
	SCALE N.T.S.		SHEET 2 OF 2		