

PRODUCT ENGINEERING NOTICE

January 10, 2005

SYSTEM FACTORY/ WAREHOUSE DESIGNATORS ON CERTAIN PRODUCTS

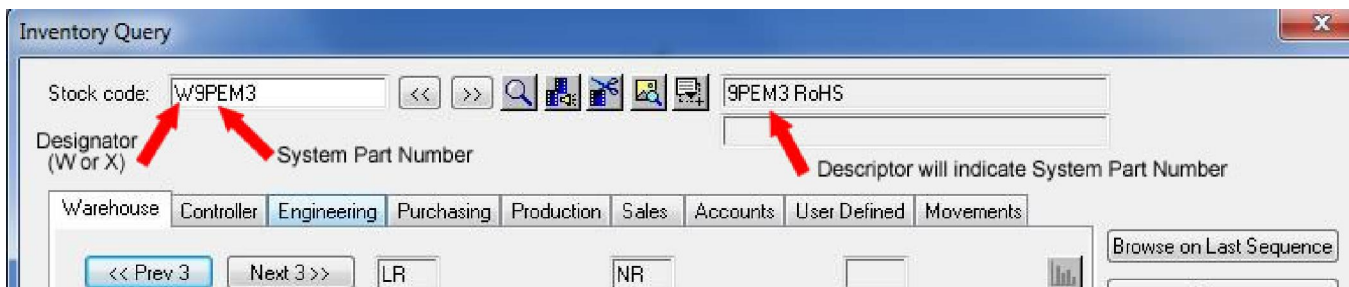
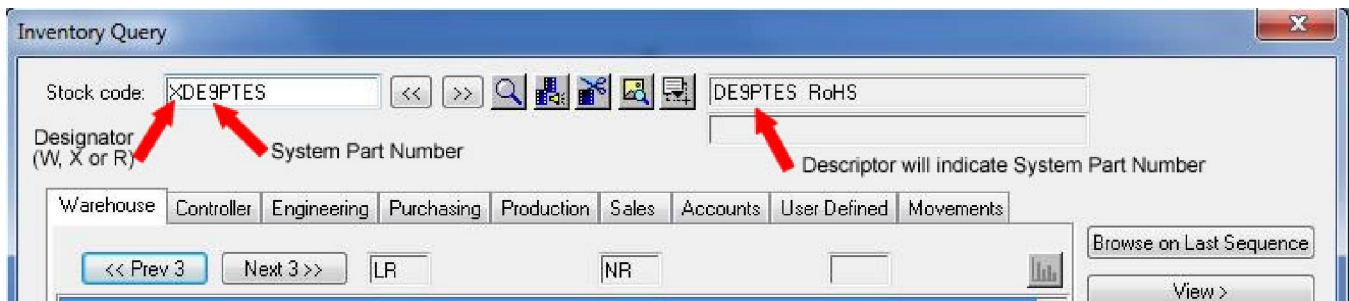
To distinguish between certain factories and warehouses for similar products we have introduced a designator to the original part number.

This will allow us to identify at a glance, the original factory/ warehouse the product was manufactured.

This designator will be assigned on certain interconnect products such as connectors, over-mold cans and dust caps. The designator may be applied to additional products should we shift production to different facilities.

Designators will not change the specifications, mechanical or electrical, of the products concerned. They will also be indicated on product drawings if applicable.

Examples of designators are:



Northern Technologies/ Lanpar Technologies