

Installation instructions

Roxtec ComSeal™ 10

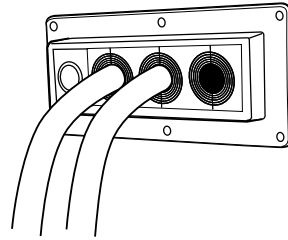
Roxtec ComSeal™ 12

Roxtec ComSeal™ 15

Roxtec ComSeal™ 16

Roxtec ComSeal™ 30

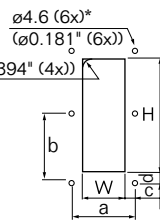
Roxtec ComSeal™ 32



Aperture dimensions

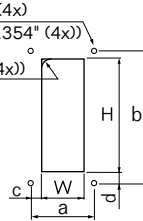
ComSeal™ 10

	(mm)	(in)
H	149±1	5.866±0.039
W	56±1	2.205±0.039
a	68.5±0.5	2.697±0.020
b	80.5±0.5	3.170±0.020
c	6.25±1	0.246±0.039
d	6±1	0.236±0.039



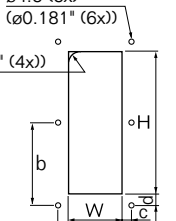
ComSeal™ 12

	(mm)	(in)
H	169±1	6.654±0.039
W	56±1	2.205±0.039
a	62±0.5	2.441±0.020
b	193±0.5	7.598±0.020
c	3±1	0.118±0.039
d	12±1	0.472±0.039



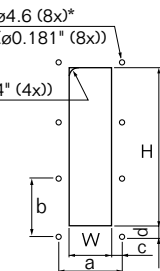
ComSeal™ 15

	(mm)	(in)
H	195±1	7.677±0.039
W	61±1	2.402±0.039
a	78.5±0.5	3.091±0.020
b	105.5±0.5	4.154±0.020
c	9±1	0.354±0.039
d	8±1	0.315±0.039



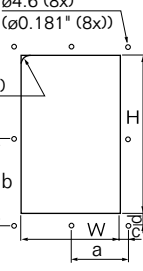
ComSeal™ 16

	(mm)	(in)
H	209±1	8.228±0.039
W	56±1	2.204±0.039
a	68.5±0.5	2.697±0.020
b	73.7±0.5	2.901±0.020
c	6.25±1	0.246±0.039
d	6±1	0.236±0.039



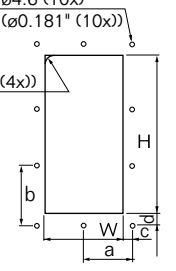
ComSeal™ 30

	(mm)	(in)
H	195±1	7.677±0.039
W	120±1	4.724±0.039
a	71.5±0.5	2.815±0.020
b	109.5±1	4.311±0.039
c	11±1	0.433±0.039
d	12±1	0.472±0.039



ComSeal™ 32

	(mm)	(in)
H	209±1	8.228±0.039
W	103±1	4.055±0.039
a	61.5±0.5	2.421±0.020
b	76.3±1	3.005±0.039
c	10±1	0.394±0.039
d	10±1	0.394±0.039

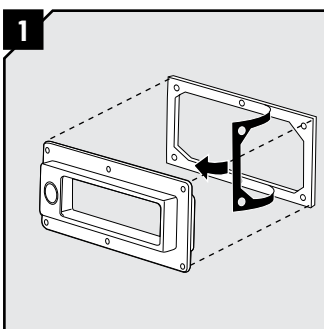


Cut a rectangular opening for the frame, according to the tables above. For Roxtec ComSeal™ 12 cut a rectangular opening according to FL 21 or the table above.

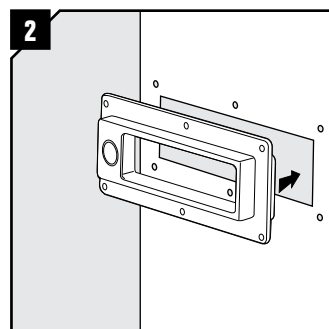
* $\varnothing 5.5$ (7/32"). Drill bit size when using nuts.

Use a counter flange with Roxtec ComSeal™ 12 (article no. 2CV0001020219) if the wall structure is thinner than 2 mm.

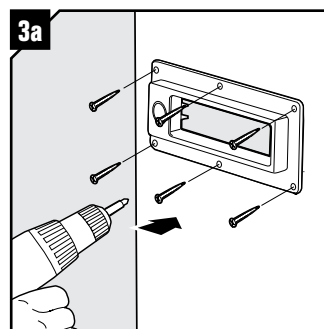
Installation



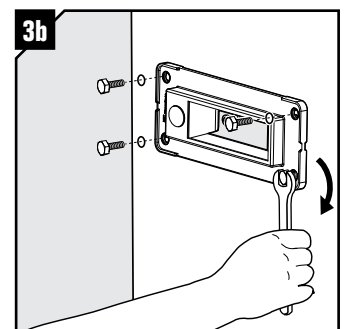
Remove the protective foil from the gasket. Fasten the gasket on the side of the flange facing the wall/structure.



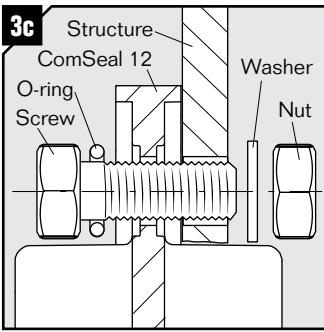
Insert the frame in the opening with the gasket side towards the structure.



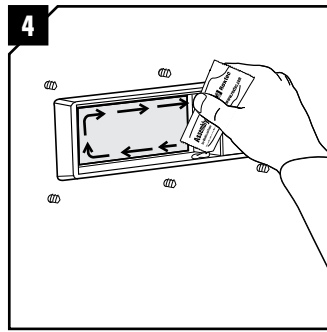
Attach the frame firmly, using the enclosed self-tapping screws.



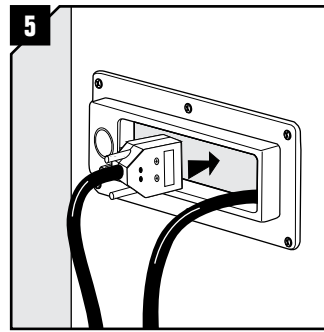
For ComSeal 12, attach the frame firmly, using the enclosed screws, nuts, o-rings and washers.



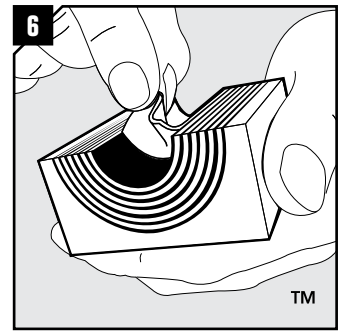
For ComSeal 12, make sure that the o-ring is mounted under the bolt head.



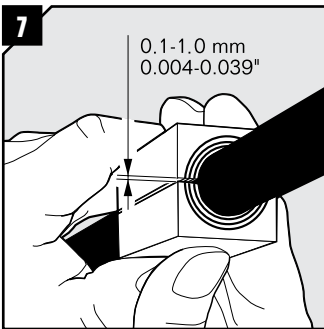
Lubricate the inside surfaces of the frame with Roxtec Assembly Gel, especially in the corners.



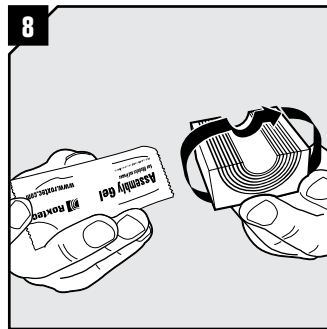
Insert the cables through the frame.



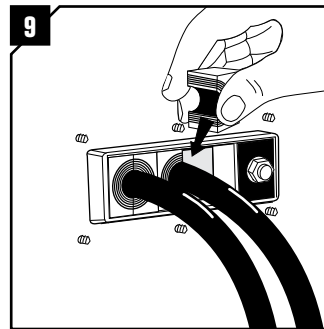
Adapt the modules, which are to hold cables or pipes. Peel off layers until you achieve the gap seen in pic. 7. The halves may not differ by more than one layer.



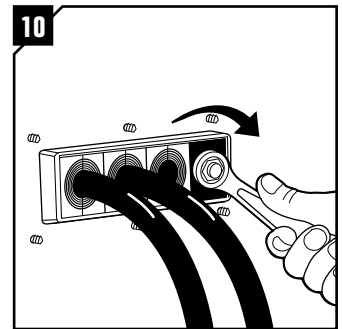
Achieve a 0.1-1.0 mm gap between the two module halves when held against the cable/pipe.



Lubricate all modules thoroughly, both on the inside and the outside surfaces, before installation.



Insert the modules from the back of the frame opening and according to the installation plan (Packing plan). If possible, start with the largest modules.



Tighten the compression unit firmly to seal the frame. Maximum 10 Nm (7.38 ft. lb). A good indication is when the assembly gel is squeezed out between the modules.

Disassembly

Reverse order.

Note

- For optimum reliability, wait 24 hours or longer after installation before exposing the cables/pipes to strain or pressure.
- To be used together with CM modules.
- To simplify installation of Roxtec ComSeal™ 30 and 32, it is recommended to fill both openings before tightening the compression units.
- Try to route cables perpendicularly through the frame.

DISCLAIMER

"The Roxtec cable entry sealing system ("the Roxtec system") is a modular-based system of sealing products consisting of different components. Each and every one of the components is necessary for the best performance of the Roxtec system. The Roxtec system has been certified to resist a number of different hazards. Any such certification, and the ability of the Roxtec system to resist such hazards, is dependent on all components that are installed as a part of the Roxtec system. Thus, the certification is not valid and does not apply unless all components installed as part of the Roxtec system are manufactured by or under license from Roxtec ("authorized manufacturer"). Roxtec gives no performance guarantee with respect to the Roxtec system, unless (i) all components installed as part of the Roxtec system are manufactured by an authorized manufacturer and (ii) the purchaser is in compliance with (a), and (b), below.

(a) During storage, the Roxtec system or part thereof, shall be kept indoors in its original packaging at room temperature.

(b) Installation shall be carried out in accordance with Roxtec installation instructions in effect from time to time.

The product information provided by Roxtec does not release the purchaser of the Roxtec system, or part thereof, from the obligation to independently determine the suitability of the products for the intended process, installation and/or use.

Roxtec gives no guarantee for the Roxtec system or any part thereof and assumes no liability for any loss or damage whatsoever, whether direct, indirect, consequential, loss of profit or otherwise, occurred or caused by the Roxtec systems or installations containing components not manufactured by an authorized manufacturer.

Roxtec expressly excludes any implied warranties of merchantability and fitness for a particular purpose and all other express or implied representations and warranties provided by statute or common law. User determines suitability of the Roxtec system for intended use and assumes all risk and liability in connection therewith. In no event shall Roxtec be liable for consequential, punitive, special, exemplary or incidental damages."



Roxtec International AB
 Box 540, 371 23 Karlskrona, SWEDEN
 PHONE +46 455 36 67 00, FAX +46 455 820 12
 EMAIL info@roxtec.com, www.roxtec.com