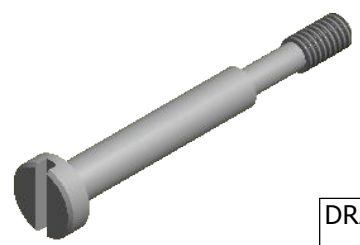


- NOTES:
1. MATERIAL: 12L14 STEEL OR EQUIV.
 2. FINISH: BRIGHT NICKEL PER AMS-QQ-N-290 CLASS 1, GRADE F OR EQUIVALENT
 3. TOLERANCE: UNLESS OTHERWISE SPECIFIED

DECIMALS	ANGLES
.XXX ± .005	± 2.0°
.XX ± .015	
 4. DIMENSIONS APPLY AFTER PLATING



DRAWN		JSD	09-JUL-12	Northern Technologies	THIS DRAWING IS THE PROPERTY OF NORTHERN TECHNOLOGIES AND SHOULD NOT BE REPRODUCED WITHOUT NORTHERN TECHNOLOGIES WRITTEN PERMISSION.		
CHECKED		SCN	09-JUL-12				
ISSUED			09-JUL-12				
				PART NUMBER B71E024604M26			
				DESCRIPTION M2.6 X 1.10 CMR KIT SCREW Ni			
SIZE	CODE	DWG NO.		REV			
A	520_235M26	0002-520-235M26		-			
SCALE	N.T.S.	SHEET		1 OF 1			

THIS IS A CONTROLLED DOCUMENT AND IS SUBJECT TO CHANGE. CONTACT NORTHERN TECHNOLOGIES ENGINEERING FOR THE LATEST REVISION.