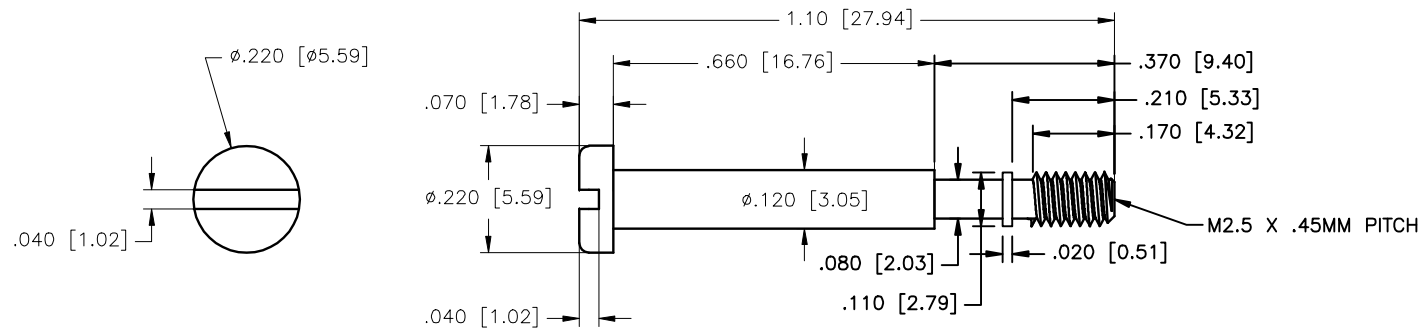


REV	DATE	DESCRIPTION	APP
A	25-APR-13	ECN 0718	



- NOTES:
1. MATERIAL: 12L14 STEEL OR EQUIVALENT
 2. FINISH: BRIGHT NICKEL PER AMS-QQ-N-290 CLASS 1 GRADE F
 3. TOLERANCE: UNLESS OTHERWISE STATED
 DECIMALS ANGLES
 .XX ±0.015 [±0.381] ±2.0'
 .XXX ±0.005 [±0.127]
 4. ALL DIMENSIONS APPLY AFTER PLATING

THIS IS A CONTROLLED DOCUMENT AND IS SUBJECT TO CHANGE. CONTACT NORTHERN TECHNOLOGIES ENGINEERING FOR THE LATEST REVISION.

UNLESS OTHERWISE SPECIFIED 1. ALL DIMENSIONS ARE IN INCHES [MM] 2. DIMENSIONS ARE TYPICAL	SIGNATURES	DATE	Northern Technologies		THIS DRAWING IS THE PROPERTY OF NORTHERN TECHNOLOGIES AND SHOULD NOT BE REPRODUCED WITHOUT NORTHERN TECHNOLOGIES WRITTEN PERMISSION.
	DRAWN JSD	05-AUG-10	PART NUMBER B71E024604M25		
	CHECKED SCN	05-AUG-10	DESCRIPTION M2.5 X 1.10 CMR KIT SCREW Ni		
	ENG		SHEET 1	CODE 520_235M25	DWG NO. 0002-520-235M25
	ISSUED	05-AUG-10	SCALE N.T.S.	SHEET 1 OF 1	