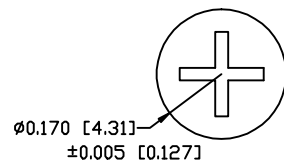
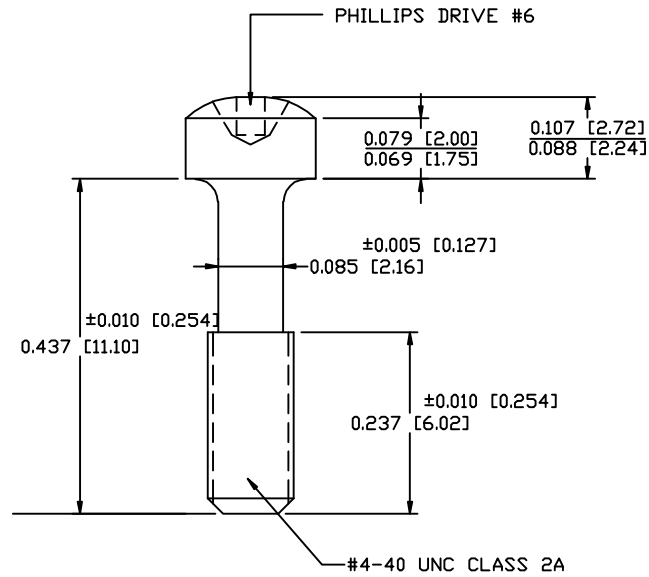


REV	DATE	DESCRIPTION	APP
A	28-OCT-08	ECN 0662	
B	25-APR-13	ECN 0718	



NOTES:

1. MATERIAL: 12L14 FREE - MACHINING STEEL
2. FINISH: ZINC TRIVALENT CHROMATE
3. DIMENSIONS: INCHES [MM]
4. TOLERANCE: AS SHOWN
5. DIMENSIONS APPLY AFTER PLATING

THIS IS A CONTROLLED DOCUMENT AND IS SUBJECT TO CHANGE. CONTACT NORTHERN TECHNOLOGIES ENGINEERING FOR THE LATEST REVISION.

UNLESS OTHERWISE SPECIFIED		SIGNATURES	DATE	Northern Technologies		THIS DRAWING IS THE PROPERTY OF NORTHERN TECHNOLOGIES AND SHOULD NOT BE REPRODUCED WITHOUT NORTHERN TECHNOLOGIES WRITTEN PERMISSION.	
1. ALL DIMENSIONS ARE IN INCHES (MM) 2. DIMENSIONS ARE TYPICAL	DRAWN	JSD	01-AUG-05	PART NUMBER B71E314164PS			
	CHECKED	SCN	01-AUG-05	DESCRIPTION 4-40 X 7/16" D-SUB COVER SCREW			
	ENG						
	ISSUED		01-AUG-05	SHEET 1	CODE 520_193	DWG NO. 0002-520-193	
			SCALE	N.T.S.			SHEET 1 OF 1