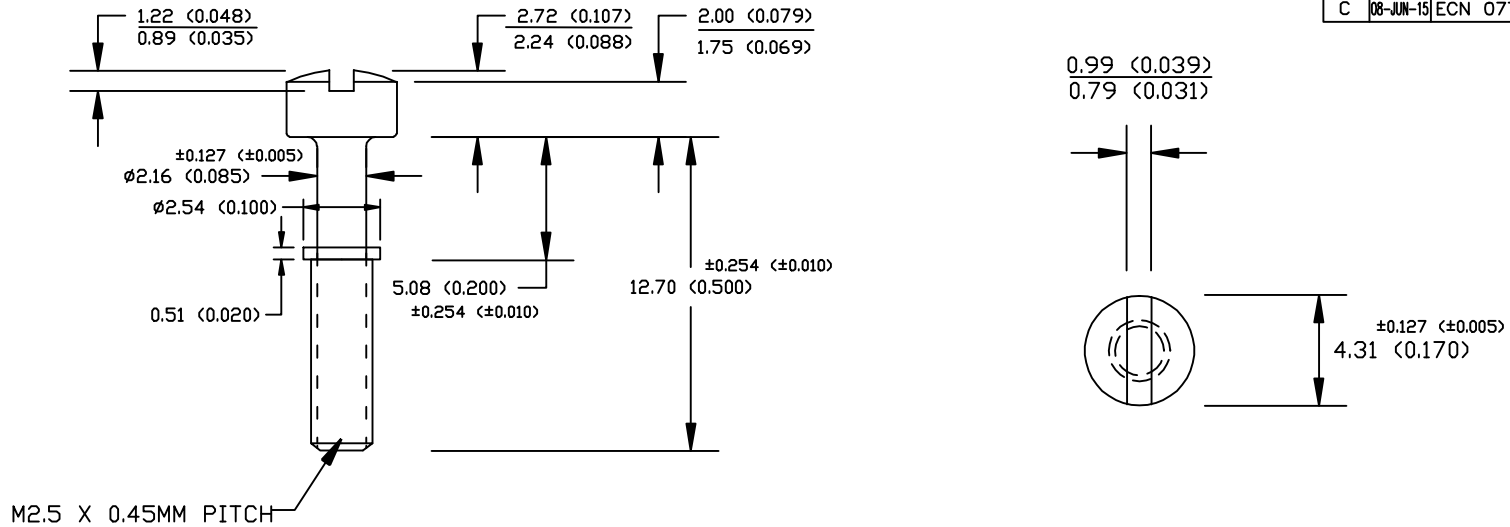


REV	DATE	DESCRIPTION	APP
A	25-APR-13	ECN 0718	
B	14-NOV-13	ECN 0735	
C	08-JUN-15	ECN 0770	



NOTES:

1. ISO STANDARD SERIES M2.5 X .45MM PITCH, MEDIUM FIT THREAD
2. MATERIAL: 1215 LEAD FREE STEEL OR EQUIV.
3. FINISH: ZINC TRIVALENT CHROMATE
4. DIMENSIONS - SHOWN AS MM (INCHES)

Limiting Dimensions of M2.5 X 0.45 External Thread Screw-Class 6g (Dimensions In MM)							
Major Diameter			Pitch Diameter			Minor Diameter	
Max	Min	Tol	Max	Min	Tol	Flat Form Max	Rounded Form Min
2.480	2.380	0.100	2.188	2.117	0.071	1.993	1.840

THIS IS A CONTROLLED DOCUMENT AND IS SUBJECT TO CHANGE. CONTACT NORTHERN TECHNOLOGIES ENGINEERING FOR THE LATEST REVISION.

UNLESS OTHERWISE SPECIFIED	SIGNATURES	DATE	Northern Technologies		THIS DRAWING IS THE PROPERTY OF NORTHERN TECHNOLOGIES AND SHOULD NOT BE REPRODUCED WITHOUT NORTHERN TECHNOLOGIES WRITTEN PERMISSION.
1. ALL DIMENSIONS ARE IN INCHES (MM) 2. DIMENSIONS ARE TYPICAL	DRAWN	JSD	01-AUG-05	PART NUMBER B71E3005134M25S	
	CHECKED	SCN	01-AUG-05	DESCRIPTION	
	ENG			M2.5 X 1/2" D-SUB COVER SCREW	
	ISSUED		01-AUG-05	SHEET	CODE
				520_179	0002-520-179
			SCALE	N.T.S.	SHEET 1 OF 1