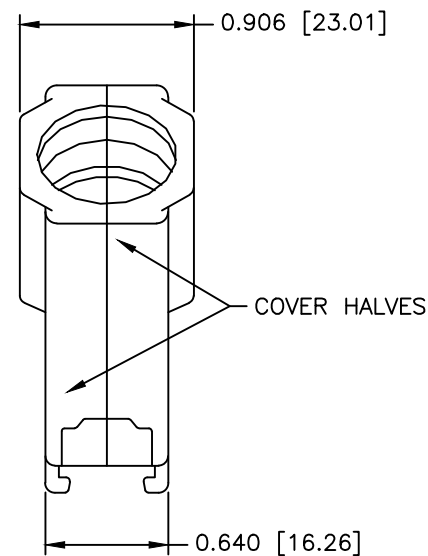
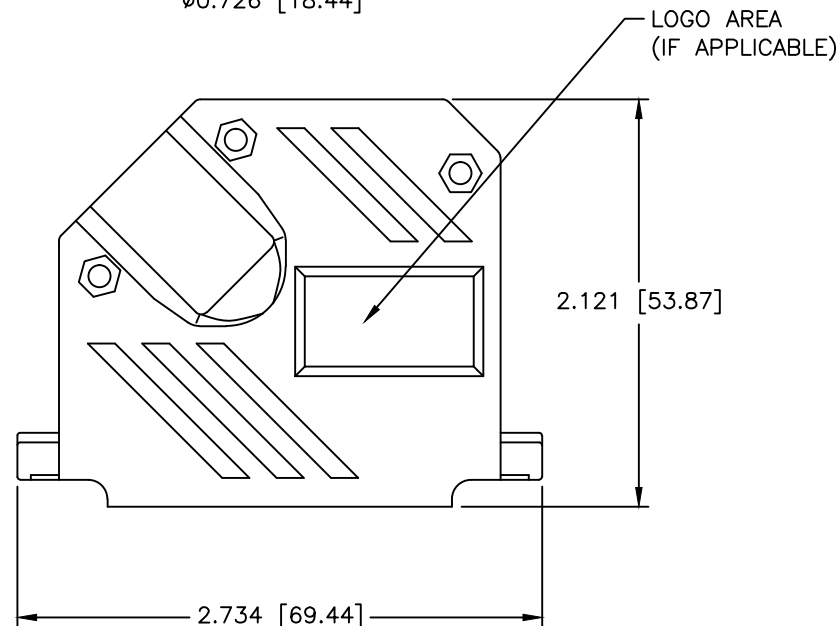


THIS PRODUCT IS
DISCONTINUED

REVISIONS				
ZONE	REV	DESCRIPTION	DATE	APPROVED
	A	ECN 0579	06-OCT-05	
	B	ECN 0603	10-AUG-06	
	C	ECN 0846	19-FEB-24	



PART NUMBER INFORMATION

PART#	LOGO STYLE	SUPPLIED
F30E230000	NO LOGO	BULK
F88E230000	NO LOGO	PACKAGED
F30E231000	NORTECH LOGO*	BULK
F88E231000	NORTECH LOGO*	PACKAGED

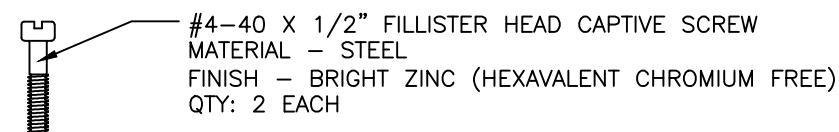
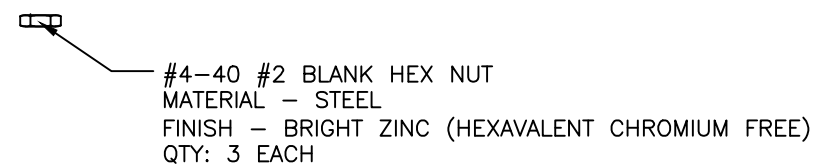
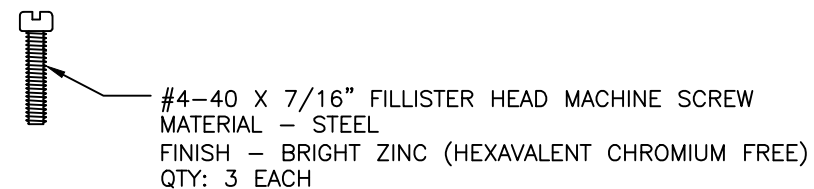
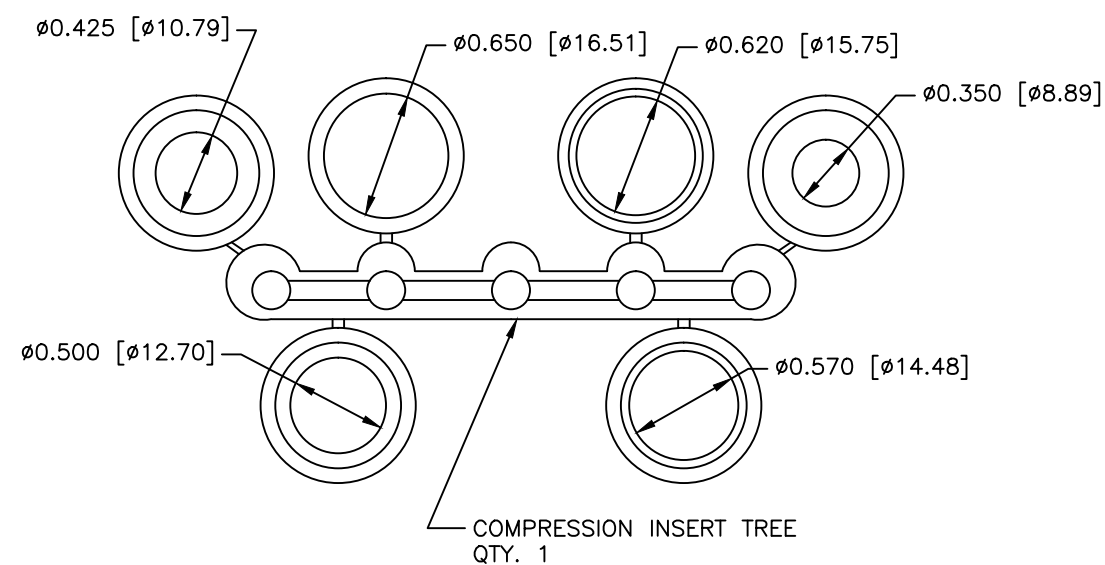
* - SPECIAL ORDER ITEM - CONTACT NORTHERN TECHNOLOGIES

CONNECTOR COVER:

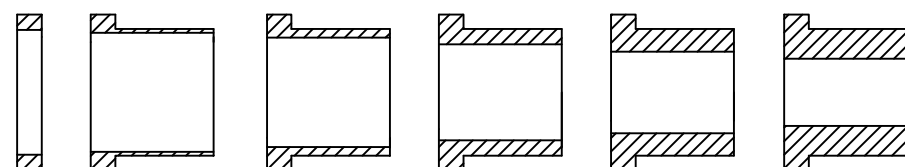
- 1.MATERIAL: ABS COMPOUND UL94V-0
- 2.FINISH: NICKEL PLATING PER NTC SPECIFICATION N/T 000500
- 3.DIMENSIONS: INCHES [MM]
- 4.TOLERANCE: ± 0.015 [0.381]

COMPRESSION INSERT TREE

- 1.MATERIAL: THERMOPLASTIC 94V-0
- 2.COLOR: BLACK
- 3.DUROMETER: 75 ± 5 TYPE A PER ASTM D2240
- 4.DIMENSIONS: INCHES [MM]
- 5.TOLERANCE: ± 0.020 [0.508]



THIS IS A CONTROLLED DOCUMENT AND IS
SUBJECT TO CHANGE. CONTACT NORTHERN
TECHNOLOGIES ENGINEERING FOR THE
LATEST REVISION.



UNLESS OTHERWISE SPECIFIED

1. ALL DIMENSIONS ARE IN
INCHES (MM)
2. DIMENSIONS ARE TYPICAL

Northern Technologies

THIS DRAWING IS THE PROPERTY OF
NORTHERN TECHNOLOGIES AND SHOULD
NOT BE REPRODUCED WITHOUT NORTHERN
TECHNOLOGIES WRITTEN PERMISSION.

PART NUMBER SEE PART NUMBER INFORMATION

DESCRIPTION CMP 37 45 DEGREE EXIT
TWO PIECE METALIZED PLASTIC COVER FR

DRAWN JSD	01-JUL-05	SIZE B	CODE 200_173	DWG NO. 0002-200-173	REV C
CHECKED SCN	01-JUL-05	SCALE 1:1		SHEET 1 OF 1	
ISSUED	01-JUL-05				