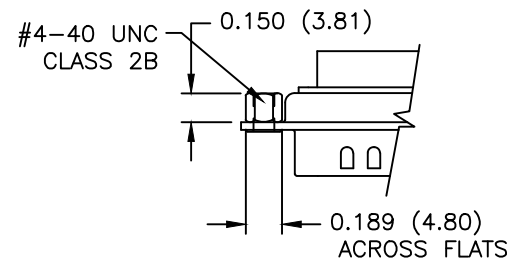
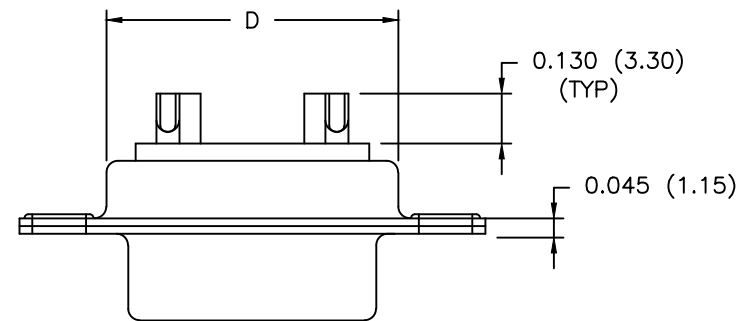
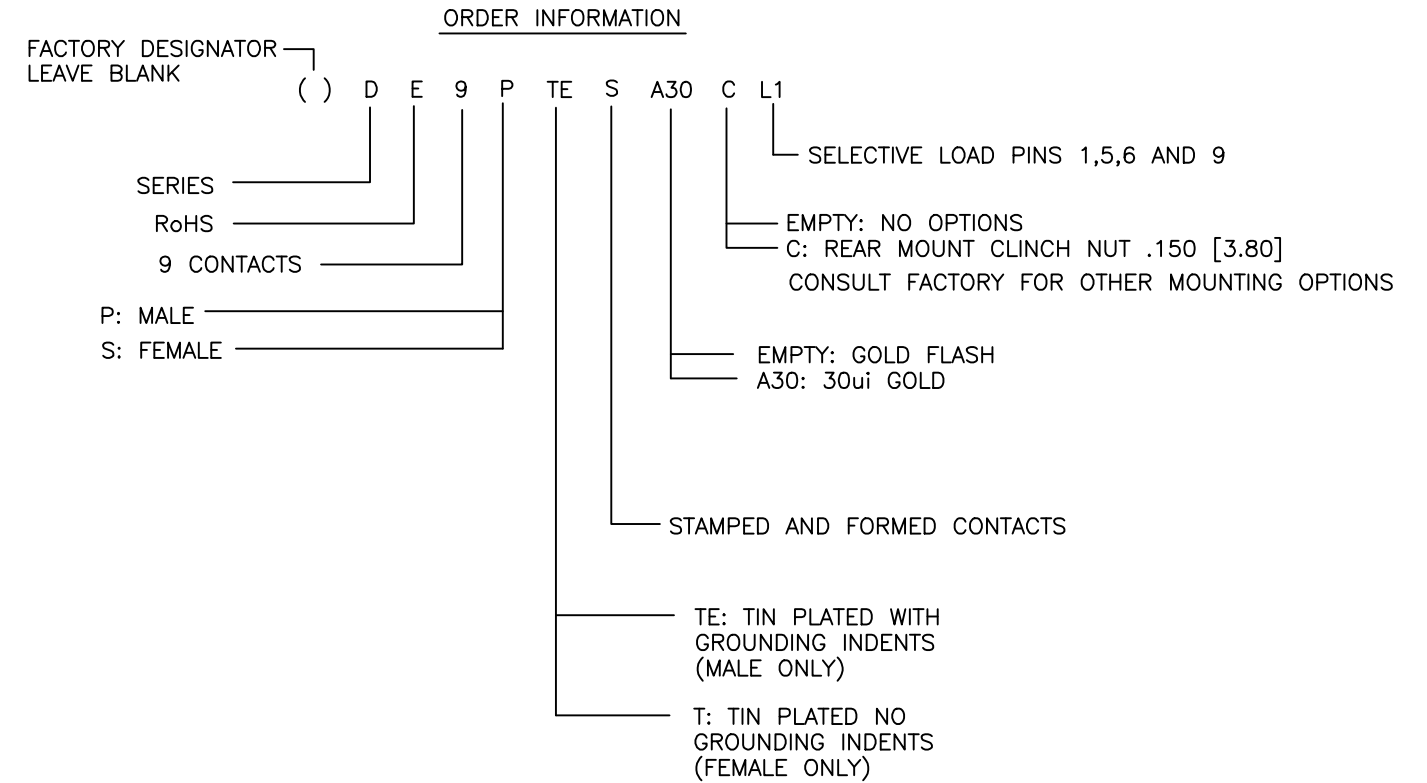


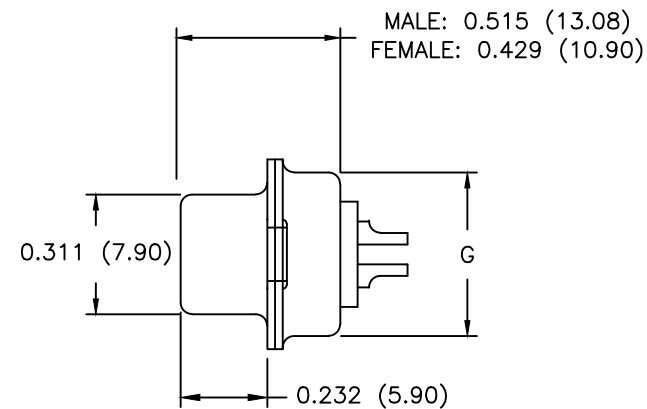
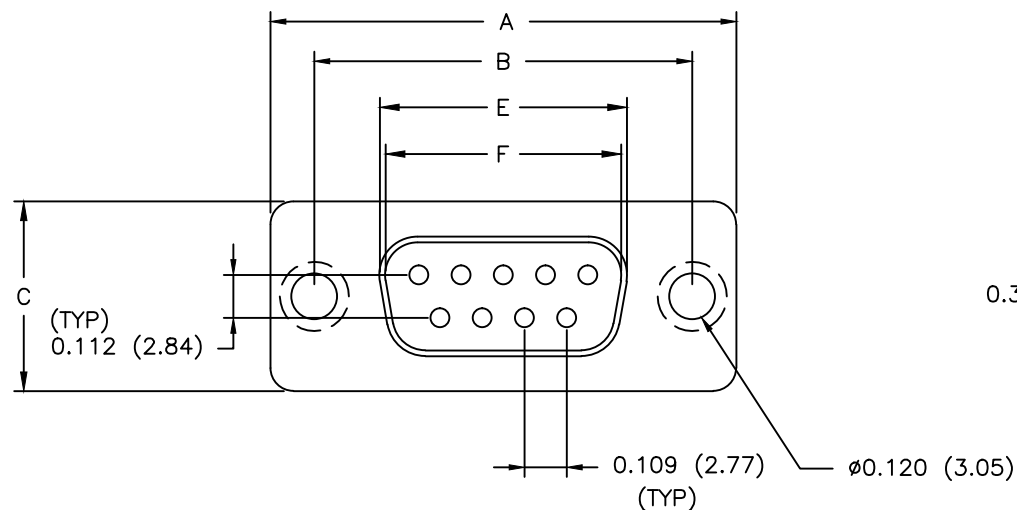
REVISIONS				
ZONE	REV	DESCRIPTION	DATE	APPROVED
	A	ECN 0619	25-AUG-06	
	B	ECN 0785	08-JUN-16	

GBIC CONNECTORS		DIMENSIONS				INCHES [MM]		
No. of Contacts	Shell Size	A	B	C	D	E Max. Female	F Min. Male	G
		± 0.005 [± 0.127]	± 0.005 [± 0.127]	± 0.005 [± 0.127]	± 0.005 [± 0.127]	± 0.005 [± 0.127]	± 0.005 [± 0.127]	± 0.005 [± 0.127]
09	E	1.213 [30.81]	0.984 [24.99]	0.494 [12.55]	0.759 [19.28]	0.643 [16.33]	0.666 [16.92]	0.422 [10.72]

CONTACT LOAD CHART
PIN 1: LOADED
PIN 2: EMPTY
PIN 3: EMPTY
PIN 4: EMPTY
PIN 5: LOADED
PIN 6: LOADED
PIN 7: EMPTY
PIN 8: EMPTY
PIN 9: LOADED



CLINCH NUT OPTION



NOTES:

- SHELL MATERIAL: STEEL
- SHELL FINISH: SEE ORDER INFORMATION
- INSULATOR MATERIAL: GLASS FILLED PBT UL94V-0
- INSULATOR COLOR: BLACK
- CONTACT MATERIAL: COPPER ALLOY
- CONTACT FINISH: SEE ORDER INFORMATION
- TEMPERATURE RANGE: -55° TO +105° CENTIGRADE
- VOLTAGE RATING: 250 VAC
- CURRENT RATING: 3 AMPS MAX
- INSULATION RESISTANCE: 500 MEGOHMS MINIMUM @ 500 VDC
- CONTACT RESISTANCE: 25 MILLIOHMS MAX.
- DIELECTRIC WITHSTANDING VOLTAGE: 500 VAC MINIMUM (1 MINUTE)
- COMPLIANCE NOTE:
PART MUST BE IN COMPLIANCE TO:
DIRECTIVE 2002/95/EC of 27 January 2003 [RoHS]

UNLESS OTHERWISE SPECIFIED 1. ALL DIMENSIONS ARE IN INCHES (MM) 2. DIMENSIONS ARE TYPICAL		Northern Technologies <small>THIS DRAWING IS THE PROPERTY OF NORTHERN TECHNOLOGIES AND SHOULD NOT BE REPRODUCED WITHOUT NORTHERN TECHNOLOGIES WRITTEN PERMISSION.</small>		
DRAWN JSD 29-SEP-05		PART NUMBER SEE ORDER INFORMATION		
CHECKED JSD 29-SEP-05		DESCRIPTION GIGABYTE INTERFACE CONVERTER CONNECTORS (GBIC) - DE SERIES		
ISSUED 29-SEP-05		SIZE B	CODE 200_162	DWG NO. 0002-200-162
		SCALE 1:1	SHEET 1 OF 1	