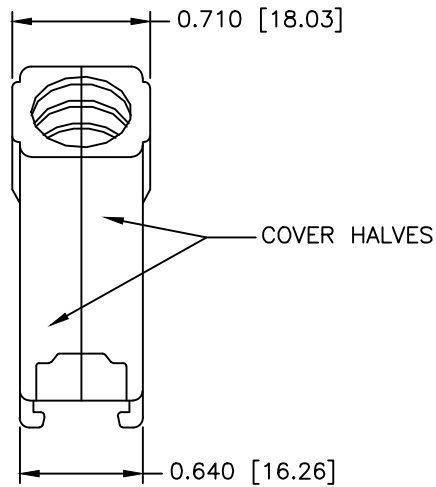
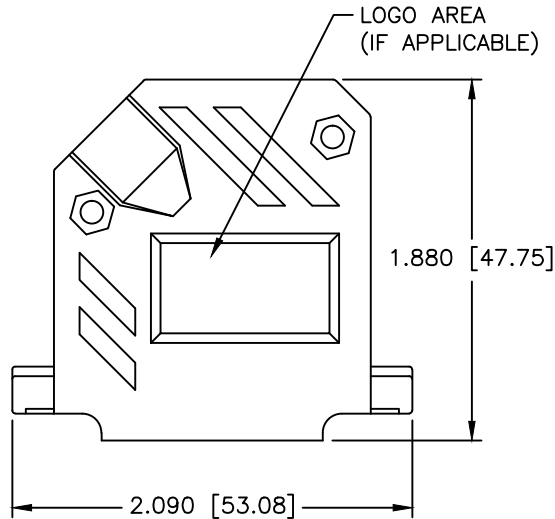
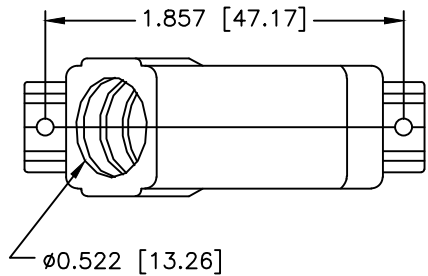


| REVISIONS | | | | |
|-----------|-----|-------------|-----------|----------|
| ZONE | REV | DESCRIPTION | DATE | APPROVED |
| | A | ECN 0607 | 10-AUG-06 | |
| | B | ECN 0844 | 19-FEB-24 | |



PART NUMBER INFORMATION
COLOR: BLACK

| PART# | LOGO STYLE | SUPPLIED |
|------------|--------------|----------|
| A30E220004 | NO LOGO | BULK |
| C88E220004 | NO LOGO | PACKAGED |
| A30E221004 | NORTECH LOGO | BULK |
| C88E221004 | NORTECH LOGO | PACKAGED |

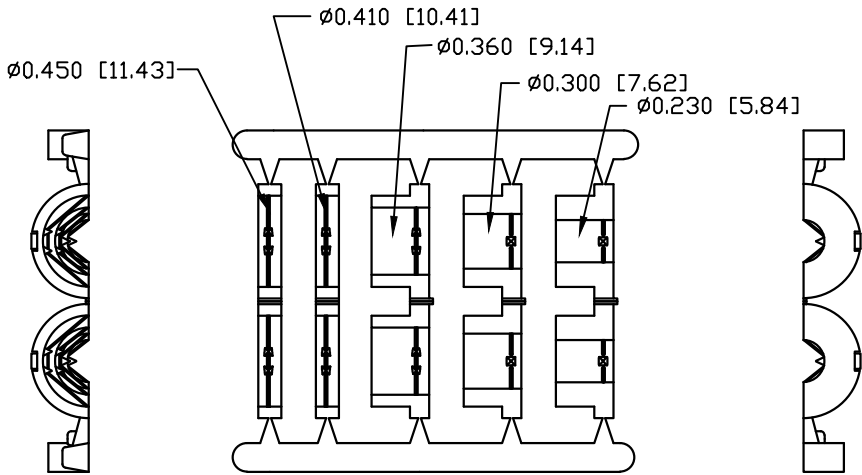
COLOR: GRAY – DISCONTINUED

| PART# | LOGO STYLE | SUPPLIED |
|------------|---------------|--------------|
| A30E220005 | NO LOGO | DISCONTINUED |
| C88E220005 | NO LOGO | DISCONTINUED |
| A30E221005 | NORTECH LOGO* | DISCONTINUED |
| C88E221005 | NORTECH LOGO* | DISCONTINUED |

* – SPECIAL ORDER ITEM – CONTACT NORTHERN TECHNOLOGIES

CONNECTOR COVER:
1.MATERIAL: THERMOPLASTIC UL94V-0
2.COLOR: BLACK
3.DIMENSIONS: INCHES [MM]
4.TOLERANCE: ±0.015 [0.381]

JACKET INSERT TREE
1.MATERIAL: POLYPROPYLENE HOMOPOLYMER
2.COLOR: BLACK
3.DIMENSIONS: INCHES [MM]
4.TOLERANCE: ±0.010 [0.254]



JACKET INSERT TREE
QTY: 1

#4-40 X 7/16" FILLISTER HEAD MACHINE SCREW
MATERIAL – STEEL
FINISH – BRIGHT ZINC (HEXAVALENT CHROMIUM FREE)
QTY: 2 EACH

#4-40 #2 BLANK HEX NUT
MATERIAL – STEEL
FINISH – BRIGHT ZINC (HEXAVALENT CHROMIUM FREE)
QTY: 2 EACH

#4-40 X 1/2" FILLISTER HEAD CAPTIVE SCREW
MATERIAL – STEEL
FINISH – BRIGHT ZINC (HEXAVALENT CHROMIUM FREE)
QTY: 2 EACH

#4 SADDLE WASHER
MATERIAL – STEEL
FINISH – BRIGHT ZINC (HEXAVALENT CHROMIUM FREE)
QTY: 2 EACH

THIS IS A CONTROLLED DOCUMENT AND IS
SUBJECT TO CHANGE. CONTACT NORTHERN
TECHNOLOGIES ENGINEERING FOR THE
LATEST REVISION.

| UNLESS OTHERWISE SPECIFIED | | Northern Technologies | | | |
|---|--|--|--------------|----------------------|-------|
| 1. ALL DIMENSIONS ARE IN INCHES (MM) 2. DIMENSIONS ARE TYPICAL | | THIS DRAWING IS THE PROPERTY OF NORTHERN TECHNOLOGIES AND SHOULD NOT BE REPRODUCED WITHOUT NORTHERN TECHNOLOGIES WRITTEN PERMISSION. | | | |
| DRAWN JSD | | PART NUMBER SEE PART NUMBER INFORMATION | | | |
| CHECKED SCN | | DESCRIPTION CPP 25 45 DEGREE EXIT TWO PIECE PLASTIC COVER | | | |
| ISSUED | | SIZE B | CODE 200_129 | DWG NO. 0002-200-129 | REV B |
| | | SCALE 1:1 | | SHEET 1 OF 1 | |