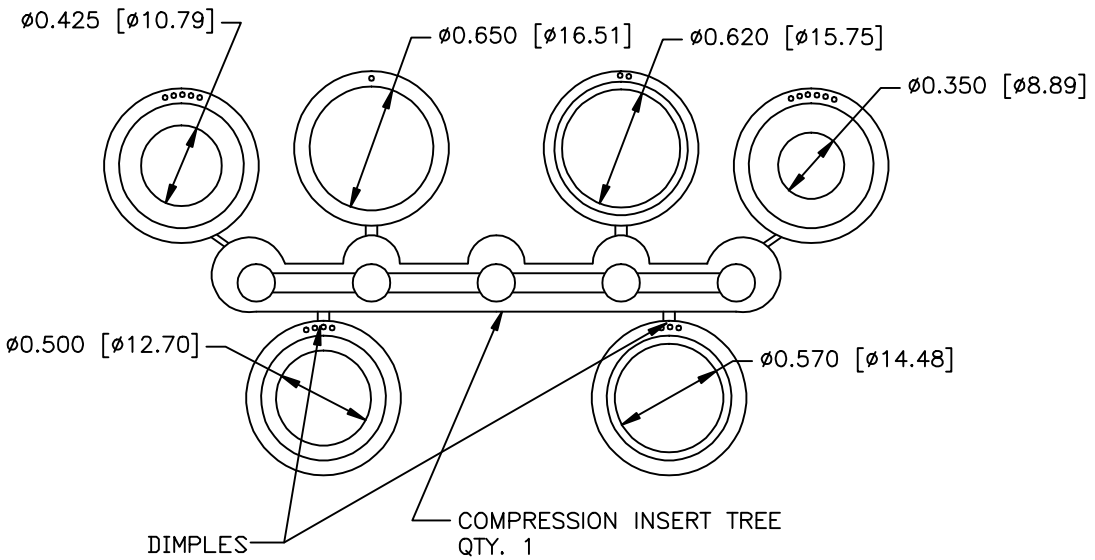
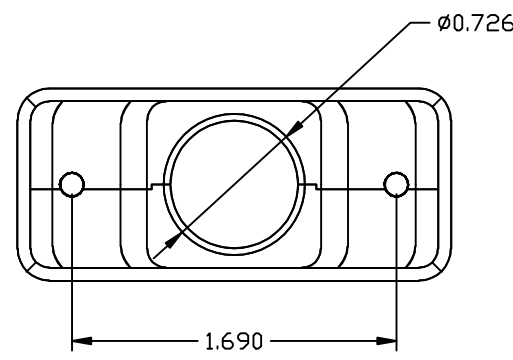
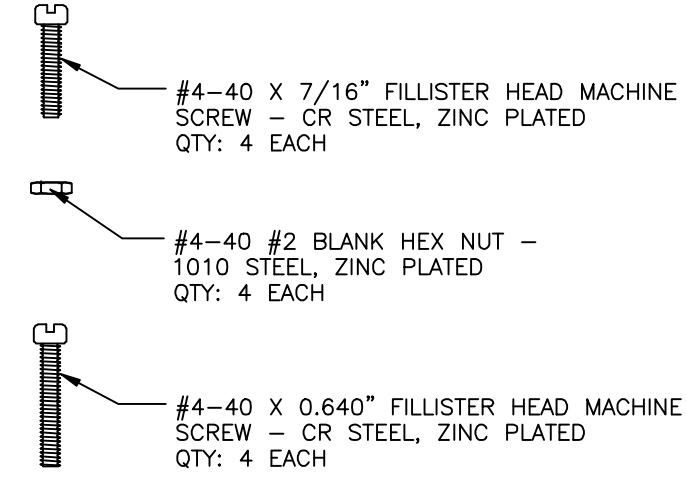
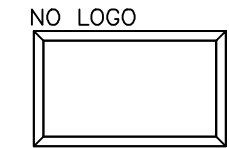


REVISIONS				
ZONE	REV	DESCRIPTION	DATE	APPROVED



**PART NUMBER INFORMATION**

PART#	LOGO STYLE	SUPPLIED
C88E710003	NO LOGO	PACKAGED

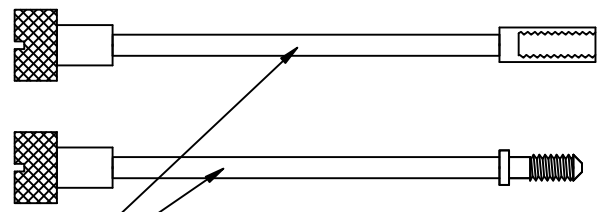


**CONNECTOR COVER:**

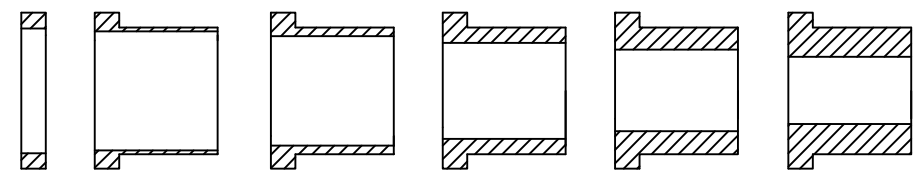
- 1.MATERIAL: ZINC ALLOY
- 2.FINISH: BRIGHT ZINC PLATING PER NTC SPECIFICATION N/T 000100
- 3.DIMENSIONS: INCHES [MM]
- 4.TOLERANCE:  $\pm 0.015$  [0.381]

**COMPRESSION INSERT TREE**

- 1.MATERIAL: THERMOPLASTIC COMPOUND
- 2.COLOR: BLACK
- 3.DUROMETER:  $80 \pm 3$  TYPE A PER ASTM D2240
- 4.DIMENSIONS: INCHES [MM]
- 5.TOLERANCE:  $\pm 0.020$  [0.508]



6-32 UNC THUMBSCREWS - STEEL, ZINC PLATED  
QTY: 1 MALE  
1 FEMALE



THIS IS A CONTROLLED DOCUMENT AND IS SUBJECT TO CHANGE. CONTACT NORTHERN TECHNOLOGIES ENGINEERING FOR THE LATEST REVISION.

UNLESS OTHERWISE SPECIFIED 1. ALL DIMENSIONS ARE IN INCHES (MM) 2. DIMENSIONS ARE TYPICAL		<b>Northern Technologies</b> <small>THIS DRAWING IS THE PROPERTY OF NORTHERN TECHNOLOGIES AND SHOULD NOT BE REPRODUCED WITHOUT NORTHERN TECHNOLOGIES WRITTEN PERMISSION.</small>		
DRAWN JSD 26-FEB-07		PART NUMBER SEE PART NUMBER INFORMATION DESCRIPTION V.35 FEMALE METAL COVER (LONG)		
CHECKED SCN 26-FEB-07	ISSUED 26-FEB-07	SIZE B	CODE 200_118	DWG NO. 0002-200-118 REV
		SCALE 1:1	SHEET 1 OF 1	