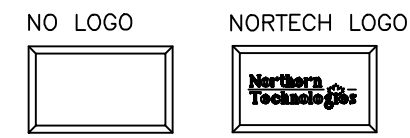
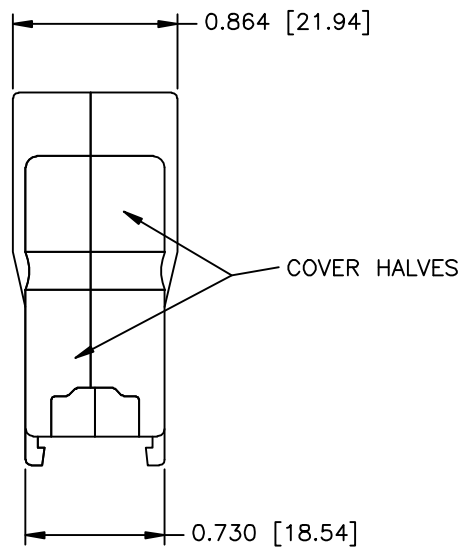
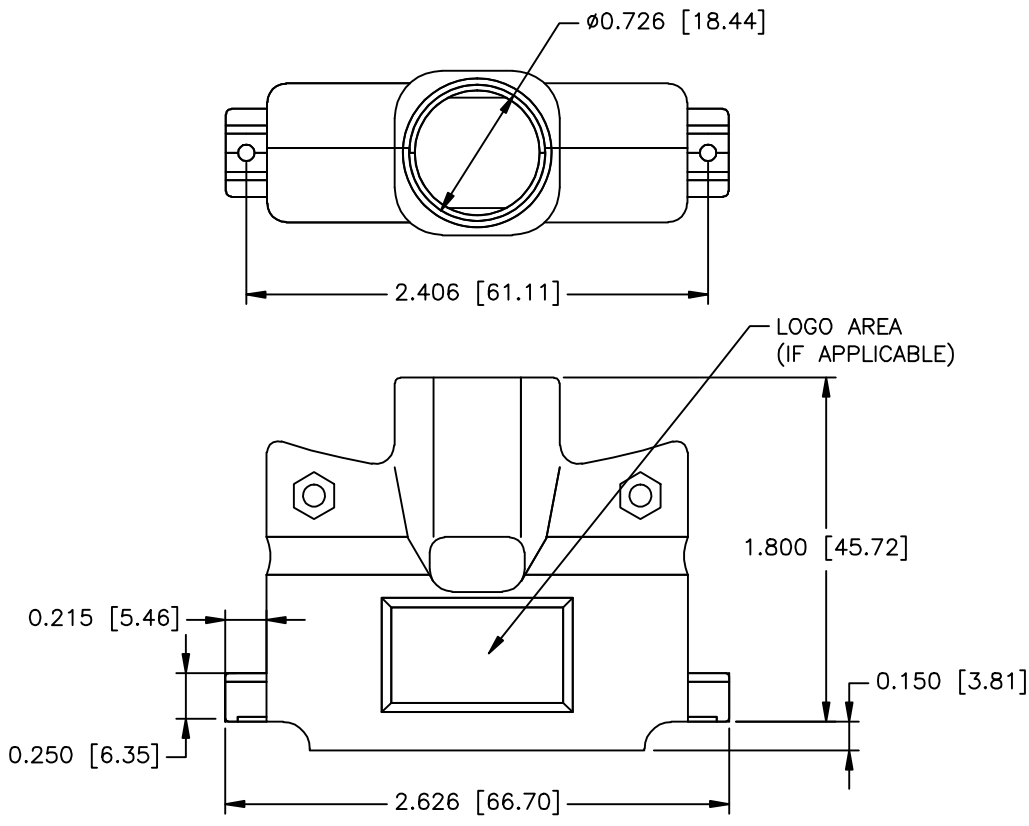


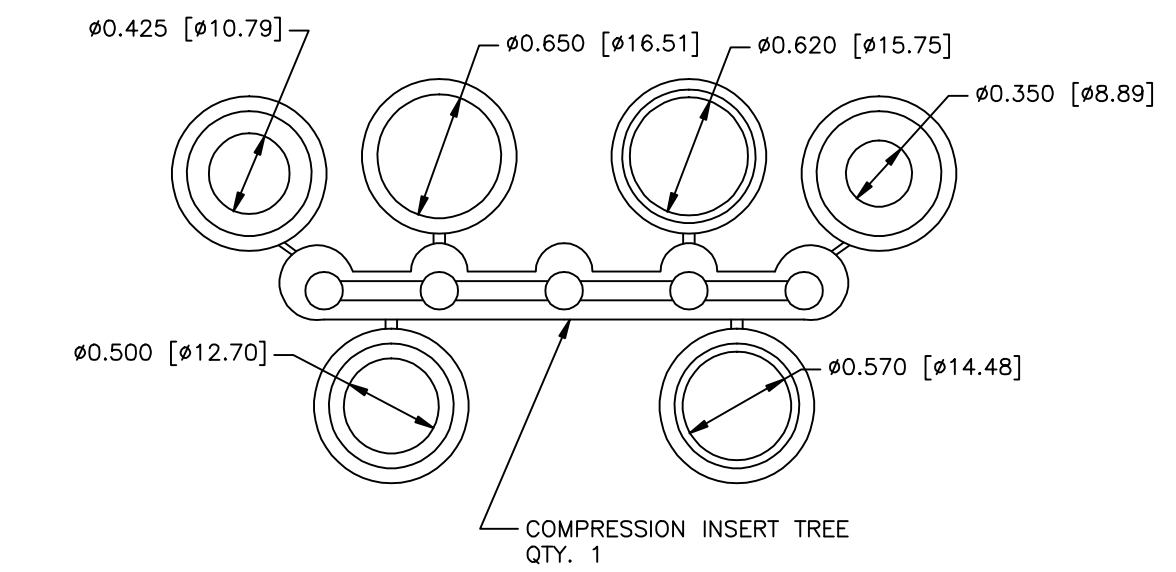
REVISIONS



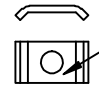
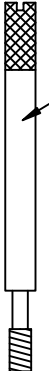
ZONE	REV	DESCRIPTION	DATE	APPROVED



PART NUMBER INFORMATION

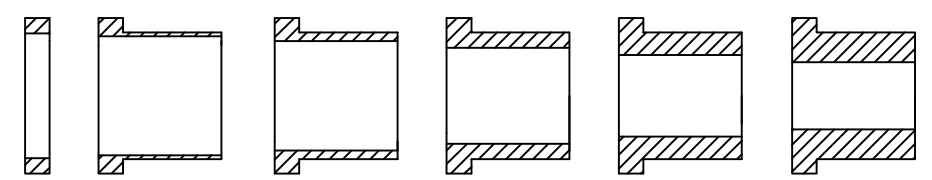
PART#	LOGO STYLE	SUPPLIED
N88E000212T	NO LOGO	PACKAGED
N88E000208T	NORTECH LOGO	PACKAGED



-  #4-40 X 7/16" FILLISTER HEAD MACHINE SCREW
MATERIAL - STEEL
FINISH - BRIGHT ZINC
QTY: 2 EACH
-  #4-40 #2 BLANK HEX NUT
MATERIAL - STEEL
FINISH - BRIGHT ZINC
QTY: 2 EACH
-  #4 SADDLE WASHER
MATERIAL - STEEL
FINISH - BRIGHT ZINC
QTY: 2 EACH
-  #4-40 X 1.94 THUMBSCREW
MATERIAL - STEEL
FINISH - BRIGHT ZINC
QTY: 2 EACH

CONNECTOR COVER:
 1. MATERIAL: ZINC ALLOY
 2. FINISH: NICKEL PLATING PER NTC SPECIFICATION N/T 000400
 3. DIMENSIONS: INCHES [MM]
 4. TOLERANCE: ±0.015 [0.381]

COMPRESSION INSERT TREE
 1. MATERIAL: THERMOPLASTIC
 2. COLOR: BLACK
 3. DUROMETER: 75 ±5 TYPE A PER ASTM D2240
 4. DIMENSIONS: INCHES [MM]
 5. TOLERANCE: ±0.020 [0.508]



THIS IS A CONTROLLED DOCUMENT AND IS SUBJECT TO CHANGE. CONTACT NORTHERN TECHNOLOGIES ENGINEERING FOR THE LATEST REVISION.

UNLESS OTHERWISE SPECIFIED 1. ALL DIMENSIONS ARE IN INCHES (MM) 2. DIMENSIONS ARE TYPICAL		Northern Technologies THIS DRAWING IS THE PROPERTY OF NORTHERN TECHNOLOGIES AND SHOULD NOT BE REPRODUCED WITHOUT NORTHERN TECHNOLOGIES WRITTEN PERMISSION.		
DRAWN JSD 23-JAN-13				
CHECKED SCN 23-JAN-13		DESCRIPTION CM 50 METAL COVER NICKEL WITH THUMBSCREWS		
ISSUED 23-JAN-13		SIZE B	CODE 200_105NT	DWG NO. 0002-200-105NT
		SCALE N.T.S.	REV	
				SHEET 1 OF 1