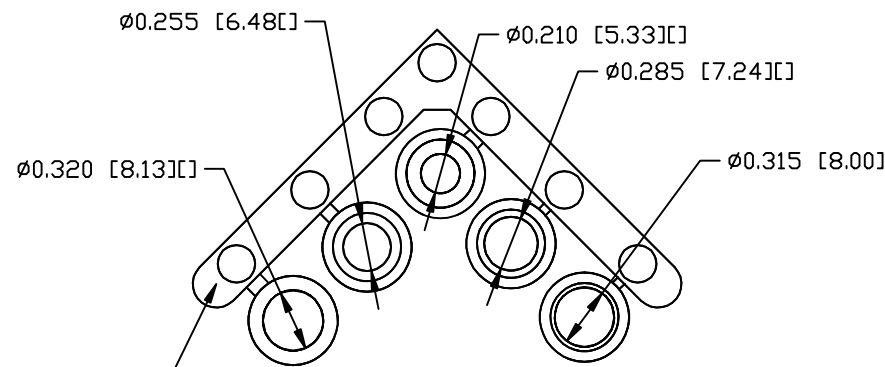
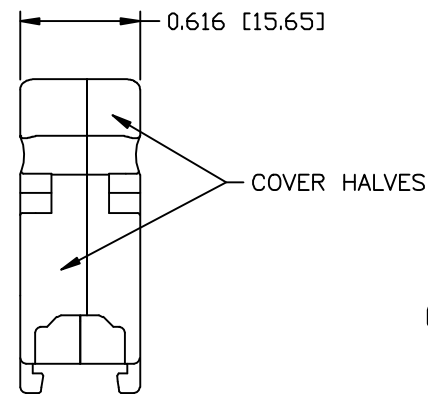
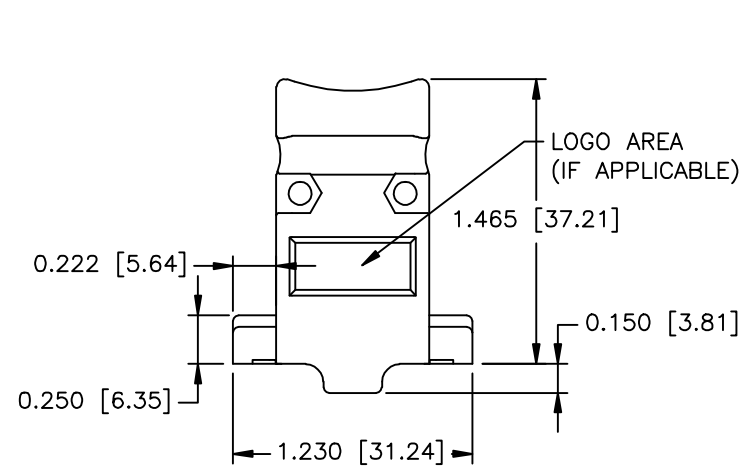
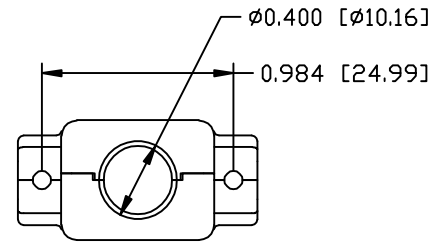
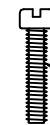
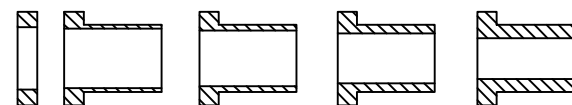


REVISIONS				
ZONE	REV	DESCRIPTION	DATE	APPROVED
	A	ECN 0755	12-NOV-14	



COMPRESSION INSERT TREE
QTY. 1



#4-40 X 7/16" FILLISTER HEAD MACHINE SCREW
MATERIAL - STEEL
FINISH - BRIGHT ZINC
QTY: 2 EACH



#4-40 #2 BLANK HEX NUT
MATERIAL - STEEL
FINISH - BRIGHT ZINC
QTY: 2 EACH

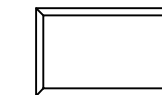


FILLISTER HEAD CAPTIVE SCREW
HEAD STYLE - SEE PAGE 2
MATERIAL - SEE PAGE 2
FINISH - SEE PAGE 2
QTY: 2 EACH



#4 SADDLE WASHER
MATERIAL - STEEL
FINISH - BRIGHT ZINC
QTY: 2 EACH

NO LOGO



NORTECH LOGO



CONNECTOR COVER:

- 1.MATERIAL: ZINC ALLOY
- 2.FINISH: NICKEL PLATING PER NTC SPECIFICATION N/T 000400
- 3.DIMENSIONS: INCHES [MM]
- 4.TOLERANCE: ± 0.015 [0.381]

COMPRESSION INSERT TREE

- 1.MATERIAL: THERMOPLASTIC
- 2.COLOR: BLACK
- 3.DUROMETER: 75 ± 5 TYPE A PER ASTM D2240
- 4.DIMENSIONS: INCHES [MM]
- 5.TOLERANCE: ± 0.020 [0.508]

UNLESS OTHERWISE SPECIFIED

1. ALL DIMENSIONS ARE IN INCHES (MM)
2. DIMENSIONS ARE TYPICAL

Northern Technologies

THIS DRAWING IS THE PROPERTY OF NORTHERN TECHNOLOGIES AND SHOULD NOT BE REPRODUCED WITHOUT NORTHERN TECHNOLOGIES' WRITTEN PERMISSION.

DRAWN JSD 29-JUL-13

CHECKED SCN 29-JUL-13

ISSUED 29-JUL-13

PART NUMBER SEE PART NUMBER INFORMATION

DESCRIPTION CM 09 METAL COVER

SIZE CODE DWG NO. REV
B 200_101N 0002-200-101N

SCALE N.T.S. SHEET 1 OF 2

THIS IS A CONTROLLED DOCUMENT AND IS SUBJECT TO CHANGE. CONTACT NORTHERN TECHNOLOGIES ENGINEERING FOR THE LATEST REVISION.

PART NUMBER INFORMATION

PART#	WITH #4-40 X 1/2" CAPTIVE SCREWS (SLOT HEAD)	SUPPLIED
N29E821093	NO LOGO COVER TOP	BULK
N29E921090	NORTECH LOGO COVER TOP	BULK
N30E100100	COVER BOTTOM	BULK
NC88E000209	NO LOGO	PACKAGED
N88E000218	NORTECH LOGO	PACKAGED

PART#	WITH #4-40 X 7/16" CAPTIVE SCREWS (SLOT HEAD)	SUPPLIED
N29E8210931	NO LOGO COVER TOP	BULK
N29E9210901	NORTECH LOGO COVER TOP	BULK
N30E100100	COVER BOTTOM	BULK
N88E0002091	NO LOGO	PACKAGED
N88E0002181	NORTECH LOGO	PACKAGED

PART#	WITH M2.5 X 12.7MM CAPTIVE SCREWS (SLOT HEAD)	SUPPLIED
N29E821093M25S	NO LOGO COVER TOP	BULK
N29E921090M25S	NORTECH LOGO COVER TOP	BULK
N30E100100	COVER BOTTOM	BULK
N88E000209M25S	NO LOGO	PACKAGED
N88E000218M25S	NORTECH LOGO	PACKAGED

PART#	WITH M2.6 X 12.7MM CAPTIVE SCREWS (SLOT HEAD)	SUPPLIED
N29E821093M26S	NO LOGO COVER TOP	BULK
N29E921090M26S	NORTECH LOGO COVER TOP	BULK
N30E100100	COVER BOTTOM	BULK
N88E000209M26S	NO LOGO	PACKAGED
N88E000218M26S	NORTECH LOGO	PACKAGED

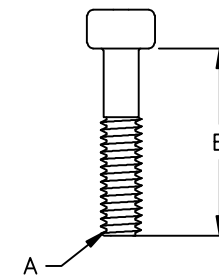
PART#	WITH M3 X 12.7MM CAPTIVE SCREWS (SLOT HEAD)	SUPPLIED
N29E821093M3S	NO LOGO COVER TOP	BULK
N29E921090M3S	NORTECH LOGO COVER TOP	BULK
N30E100100	COVER BOTTOM	BULK
N88E000209M3S	NO LOGO	PACKAGED
N88E000218M3S	NORTECH LOGO	PACKAGED

PART#	WITH #4-40 X 1/2" CAPTIVE SCREWS (PHILLIPS HEAD)	SUPPLIED
N29E821093PS	NO LOGO COVER TOP	BULK
N29E921090PS	NORTECH LOGO COVER TOP	BULK
N30E100100	COVER BOTTOM	BULK
N88E000209PS	NO LOGO	PACKAGED
N88E000218PS	NORTECH LOGO	PACKAGED

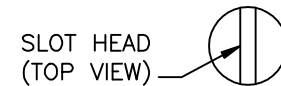
THIS IS A CONTROLLED DOCUMENT AND IS SUBJECT TO CHANGE. CONTACT NORTHERN TECHNOLOGIES ENGINEERING FOR THE LATEST REVISION.

REVISIONS				
ZONE	REV	DESCRIPTION	DATE	APPROVED

FILLISTER HEAD CAPTIVE SCREW



THREAD (A)	LENGTH (B)	HEAD STYLE	MATERIAL	PLATING
#4-40 UNC	1/2 INCH	SLOT	COLD ROLL STEEL	ZINC
#4-40 UNC	7/16 INCH	SLOT	COLD ROLL STEEL	ZINC
M2.5 X .45MM	12.7 MM	SLOT	LOW CARBON STEEL	ZINC
M2.6 X .45MM	12.7 MM	SLOT	LOW CARBON STEEL	ZINC
M3 X .5MM	12.7 MM	SLOT	LOW CARBON STEEL	ZINC
#4-40 UNC	1/2 INCH	PHILLIPS	LOW CARBON STEEL	ZINC



SLOT HEAD (TOP VIEW)



PHILLIPS HEAD (TOP VIEW)

UNLESS OTHERWISE SPECIFIED 1. ALL DIMENSIONS ARE IN INCHES [MM] 2. DIMENSIONS ARE TYPICAL		Northern Technologies <small>THIS DRAWING IS THE PROPERTY OF NORTHERN TECHNOLOGIES AND SHOULD NOT BE REPRODUCED WITHOUT NORTHERN TECHNOLOGIES WRITTEN PERMISSION.</small>		
DRAWN JSD		PART NUMBER SEE PART NUMBER INFORMATION		
CHECKED SCN		DESCRIPTION CM 09 METAL COVER Ni		
ISSUED		SIZE B	CODE 200_101N	DWG NO. 0002-200-101N
29-JUL-13		SCALE NTS		REV
29-JUL-13		SHEET 2 OF 2		