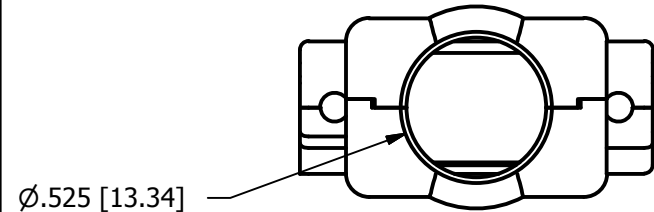
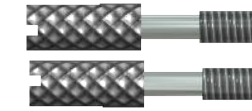


REV	DESCRIPTION	DATE
A	ECN0782	17-DEC-15

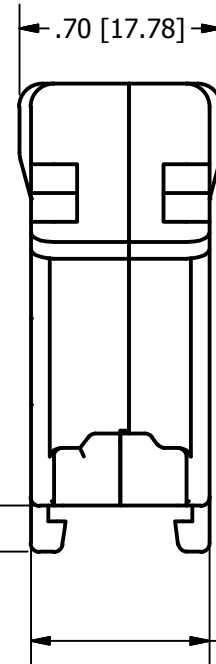
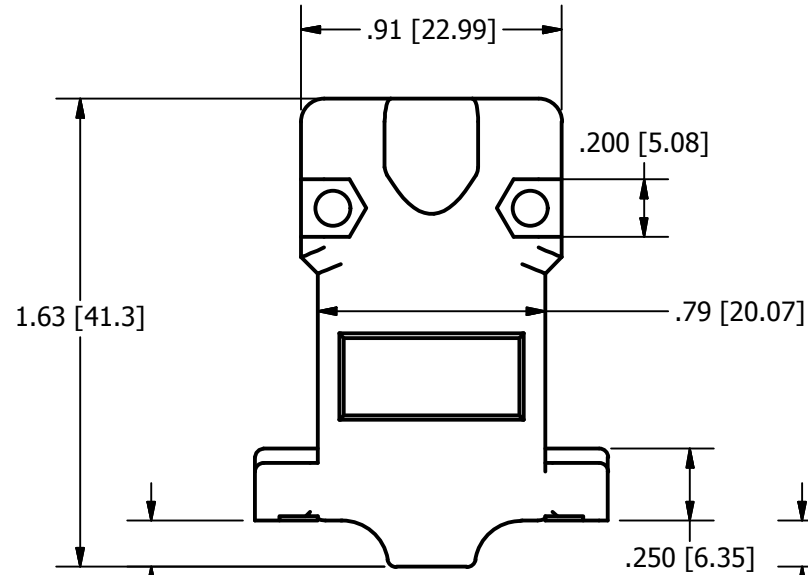
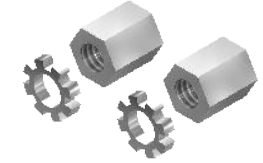


Ø.525 [13.34]
±0.010 [0.254]

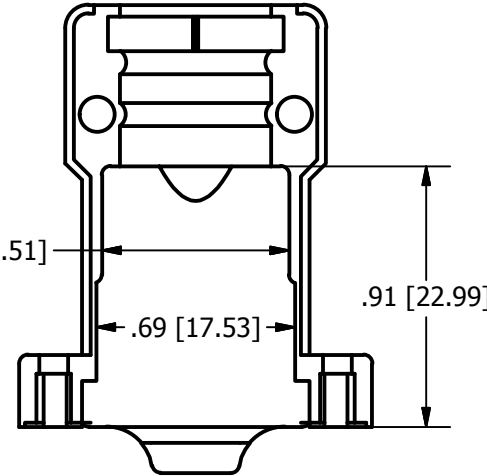


OPTIONAL THUMBSCREW KIT
SEE PART NUMBER INFORMATION

OPTIONAL HEX INVERTER KIT
CONVERTS TO FEMALE SCREW-LOCKS
SEE PART NUMBER INFORMATION



INTERNAL DIMENSIONS



#4-40 X 7/16" FILLISTER HEAD MACHINE SCREW
MATERIAL: CR STEEL
FINISH: ZINC PLATE
QTY: 2 EACH



FILLISTER HEAD CAPTIVE SCREW
HEAD AND THREAD TYPE - SEE PART NUMBER INFORMATION
MATERIAL: STEEL
FINISH: ZINC PLATE
QTY: 2 EACH



#4-40 #2 BLANK HEX NUT
MATERIAL: CR STEEL
FINISH: ZINC PLATE
QTY: 2 EACH



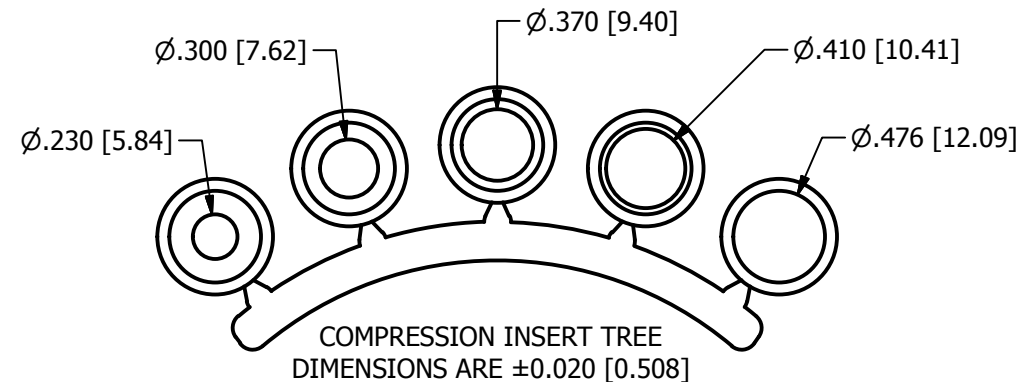
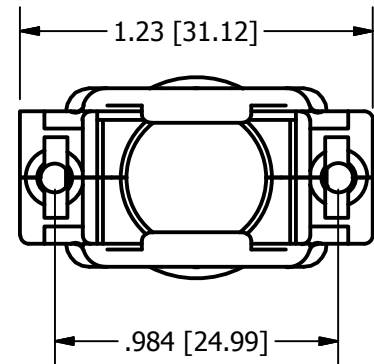
#4 SADDLE WASHER
MATERIAL: CR STEEL
FINISH: ZINC PLATE
QTY: 2 EACH

CONNECTOR COVER:

1. MATERIAL: ZINC ALLOY
2. FINISH: NICKEL PLATED

COMPRESSION INSERT TREE

1. MATERIAL: THERMOPLASTIC
2. COLOR: BLACK
3. DUROMETER: 75 ±5 TYPE A PER ASTM D2240
4. TOLERANCE: ±0.020 [.508]



COMPRESSION INSERT TREE
DIMENSIONS ARE ±0.020 [0.508]

THIS IS A CONTROLLED DOCUMENT AND IS SUBJECT TO CHANGE. CONTACT NORTHERN TECHNOLOGIES FOR THE LATEST REVISION.

DRAWN	JSD	21-AUG-14
CHECKED	SCN	21-AUG-14
ISSUED		18-NOV-15

Northern Technologies

THIS DRAWING IS THE PROPERTY OF NORTHERN TECHNOLOGIES AND SHOULD NOT BE REPRODUCED WITHOUT NORTHERN TECHNOLOGIES WRITTEN PERMISSION.

UNLESS OTHERWISE SPECIFIED
DIMENSIONS ARE IN INCHES [MM]
TOLERANCE .XXX ± .005 [0.127]
.XX ± .010 [0.254]
.X ± .020 [0.508]
ANGULAR ± 1½°

PART NUMBER SEE PART NUMBER INFORMATION
DESCRIPTION CM STR 09 0.525 EXIT COVER Ni

SIZE	CODE	DWG NO.	A
B	200-101L	0002_200_101L	
SCALE	NTS		SHEET 1 OF 2

PART NUMBER INFORMATION

PART #	WITH #4-40 X 1/2" CAPTIVE SCREWS (SLOT HEAD)	SUPPLIED
N29E821093L	NO LOGO COVER TOP	BULK
N29E921090L	NORTECH COVER TOP	BULK
N30E100100L	COVER BOTTOM	BULK
N88E000209L	NO LOGO	PACKAGED
N88E000218L	NORTECH LOGO	PACKAGED

PART #	WITH M3 X 12.7MM CAPTIVE SCREWS (SLOT HEAD)	SUPPLIED
N29E821093LM3S	NO LOGO COVER TOP	BULK
N29E921090LM3S	NORTECH COVER TOP	BULK
N30E100100L	COVER BOTTOM	BULK
N88E000209LM3S	NO LOGO	PACKAGED
N88E000218LM3S	NORTECH LOGO	PACKAGED

PART #	WITH #4-40 X 7/16" CAPTIVE SCREWS (SLOT HEAD)	SUPPLIED
N29E821093L1	NO LOGO COVER TOP	BULK
N29E921090L1	NORTECH COVER TOP	BULK
N30E100100L	COVER BOTTOM	BULK
N88E000209L1	NO LOGO	PACKAGED
N88E000218L1	NORTECH LOGO	PACKAGED

PART #	WITH #4-40 X 1/2" CAPTIVE SCREWS (PHILLIPS HEAD)	SUPPLIED
N29E821093LPS	NO LOGO COVER TOP	BULK
N29E921090LPS	NORTECH COVER TOP	BULK
N30E100100L	COVER BOTTOM	BULK
N88E000209LPS	NO LOGO	PACKAGED
N88E000218LPS	NORTECH LOGO	PACKAGED

PART #	WITH M2.5 X 12.7MM CAPTIVE SCREWS (SLOT HEAD)	SUPPLIED
N29E821093LM25S	NO LOGO COVER TOP	BULK
N29E921090LM25S	NORTECH COVER TOP	BULK
N30E100100L	COVER BOTTOM	BULK
N88E000209LM25S	NO LOGO	PACKAGED
N88E000218LM25S	NORTECH LOGO	PACKAGED

PART #	WITH #4-40 X 0.84 THUMBSCREWS (SLOT HEAD)	SUPPLIED
N29E821093LT4S	NO LOGO COVER TOP	BULK
N29E921090LT4S	NORTECH COVER TOP	BULK
N30E100100L	COVER BOTTOM	BULK
N88E000209LT4S	NO LOGO	PACKAGED
N88E000218LT4S	NORTECH LOGO	PACKAGED

PART #	WITH M2.6 X 12.7MM CAPTIVE SCREWS (SLOT HEAD)	SUPPLIED
N29E821093LM26S	NO LOGO COVER TOP	BULK
N29E921090LM26S	NORTECH COVER TOP	BULK
N30E100100L	COVER BOTTOM	BULK
N88E000209LM26S	NO LOGO	PACKAGED
N88E000218LM26S	NORTECH LOGO	PACKAGED

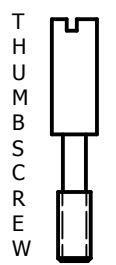
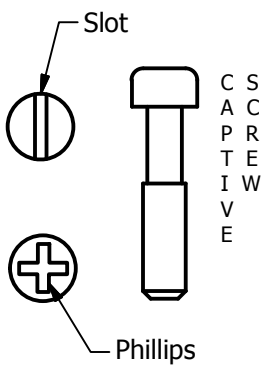
PART #	WITH #4-40 HEX INVERTER (CONVERTS MATING AREA TO FEMALE)	SUPPLIED
N29E821093LHX	NO LOGO COVER TOP	BULK
N29E921090LHX	NORTECH COVER TOP	BULK
N30E100100L	COVER BOTTOM	BULK
N88E000209LHX	NO LOGO	PACKAGED
N88E000218LHX	NORTECH LOGO	PACKAGED

FILLISTER HEAD CAPTIVE SCREWS

THREAD	LENGTH	HEAD STYLE	MATERIAL	PLATING
#4-40 UNC	1/2 INCH	SLOT	STEEL	ZINC
#4-40 UNC	7/16 INCH	SLOT	STEEL	ZINC
M2.5 X .45MM	12.7 MM	SLOT	STEEL	ZINC
M2.6 X .45MM	12.7 MM	SLOT	STEEL	ZINC
M3 X .5MM	12.7 MM	SLOT	STEEL	ZINC
#4-40 UNC	1/2 INCH	PHILLIPS	STEEL	ZINC

THUMBSCREW

THREAD	LENGTH	HEAD STYLE	MATERIAL	PLATING
#4-40 UNC	0.84 INCH	SLOT	STEEL	ZINC



THIS IS A CONTROLLED DOCUMENT AND IS SUBJECT TO CHANGE. CONTACT NORTHERN TECHNOLOGIES FOR THE LATEST REVISION.

DRAWN	JSD	21-AUG-14	Northern Technologies THIS DRAWING IS THE PROPERTY OF NORTHERN TECHNOLOGIES AND SHOULD NOT BE REPRODUCED WITHOUT NORTHERN TECHNOLOGIES WRITTEN PERMISSION.
CHECKED	SCN	21-AUG-14	
ISSUED		18-NOV-15	
UNLESS OTHERWISE SPECIFIED DIMENSIONS ARE IN INCHES [MM] TOLERANCE .XXX ± .010 [0.254] .XX ± .020 [0.508] .X ± .030 [0.762] ANGULAR ± 1/2°			PART NUMBER SEE PART NUMBER INFORMATION DESCRIPTION CM STR 09 0.525 EXIT COVER Ni
SIZE	CODE	DWG NO.	A
B	200_101L	0002-200-101L	
SCALE	NTS		SHEET 2 OF 2