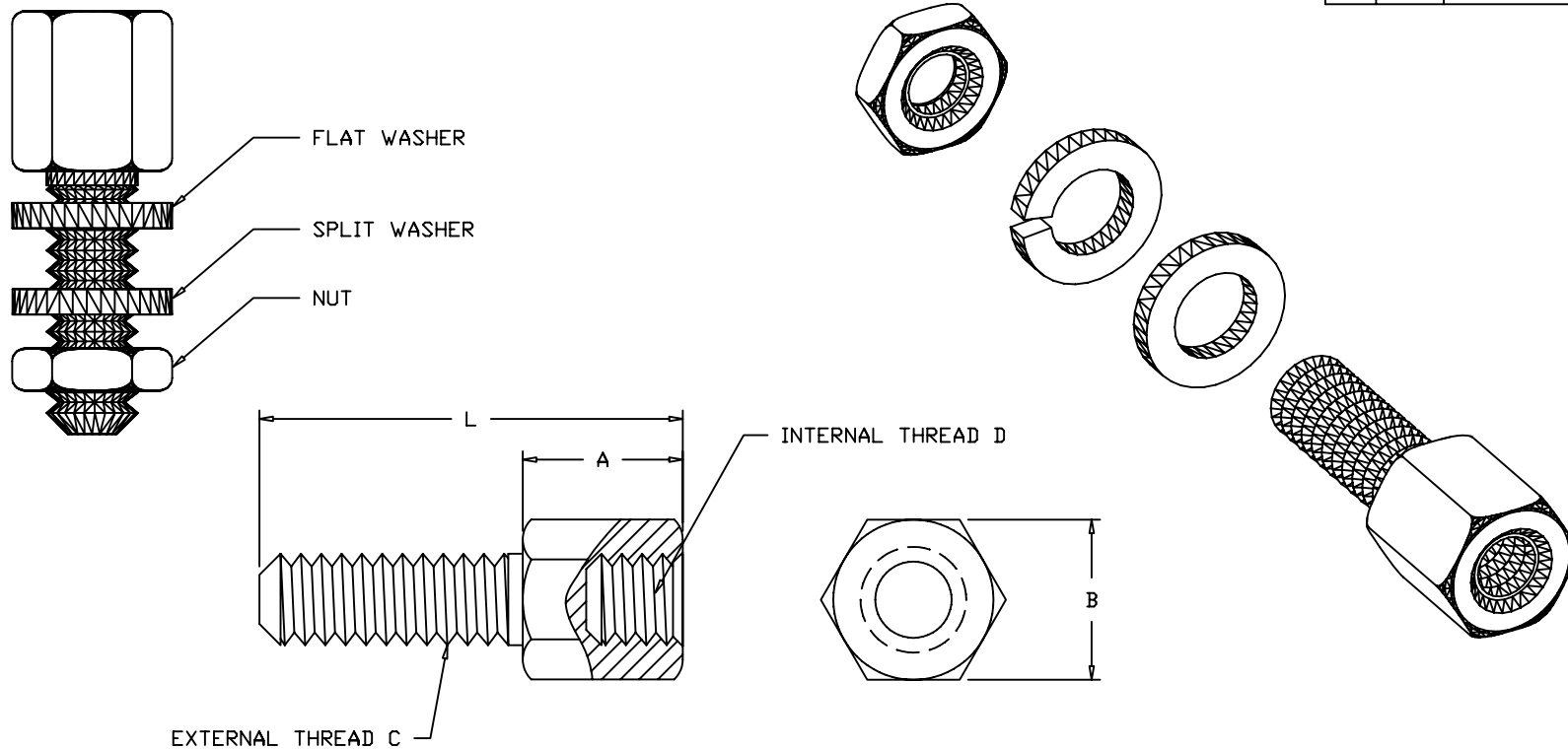


REV	DATE	DESCRIPTION	APP



PART No.	L ±0.012(0.3) (13.0)	A ±0.01(0.2) (4.80)	B ±0.005(0.1) (4.76)	EXTERNAL THREAD C	INTERNAL THREAD D
C89E014009	0.512 (13.0)	0.189 (4.80)	0.187 (4.76)	4-40 UNC-2A	4-40 UNC-2B

NOTES:

1. FEMALE SCREWLOCK MATERIAL: BRASS
2. FEMALE SCREWLOCK FINISH: NICKEL PLATE
3. 4-40 WASHER MATERIAL: STEEL
4. 4-40 WASHER FINISH: NICKEL PLATE
5. 4-40 LOCK WASHER MATERIAL: STEEL
6. 4-40 LOCK WASHER FINISH: NICKEL PLATE
7. 4-40 NUT MATERIAL: STEEL
8. 4-40 NUT FINISH: NICKEL PLATE
9. COMPLIANCE NOTE:

PART MUST BE IN COMPLIANCE TO:  
DIRECTIVE 2002/95/EC of 27 January 2003 [RoHS]

C89E014009 CONSISTS OF:  
2 - LOW PROFILE FEMALE SCREWLOCKS  
2 - 4-40 FLAT WASHERS  
2 - 4-40 SPLIT WASHERS  
2 - 4-40 NUTS

THIS IS A CONTROLLED DOCUMENT AND IS  
SUBJECT TO CHANGE. CONTACT NORTHERN  
TECHNOLOGIES ENGINEERING FOR THE  
LATEST REVISION.

UNLESS OTHERWISE SPECIFIED	SIGNATURES	DATE	Northern Technologies		
1. ALL DIMENSIONS ARE IN INCHES (MM) 2. DIMENSIONS ARE TYPICAL	DRAWN JSD	04-NOV-05	PART NUMBER C89E014009 DESCRIPTION FEMALE SCREWLOCK ASSEMBLY [RoHS]		
	CHECKED SCN	04-NOV-05			
	ISSUED	04-NOV-05	SHEET 1	CODE 7100_153	DWG NO. 7100-500-153
			SCALE N.T.S.		SHEET 1 OF 1

THIS DRAWING IS THE PROPERTY OF  
NORTHERN TECHNOLOGIES AND SHOULD  
NOT BE REPRODUCED WITHOUT NORTHERN  
TECHNOLOGIES WRITTEN PERMISSION.