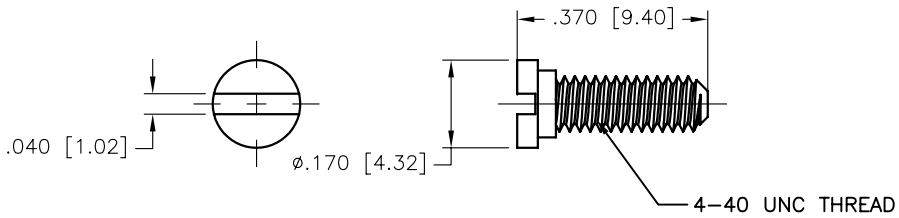
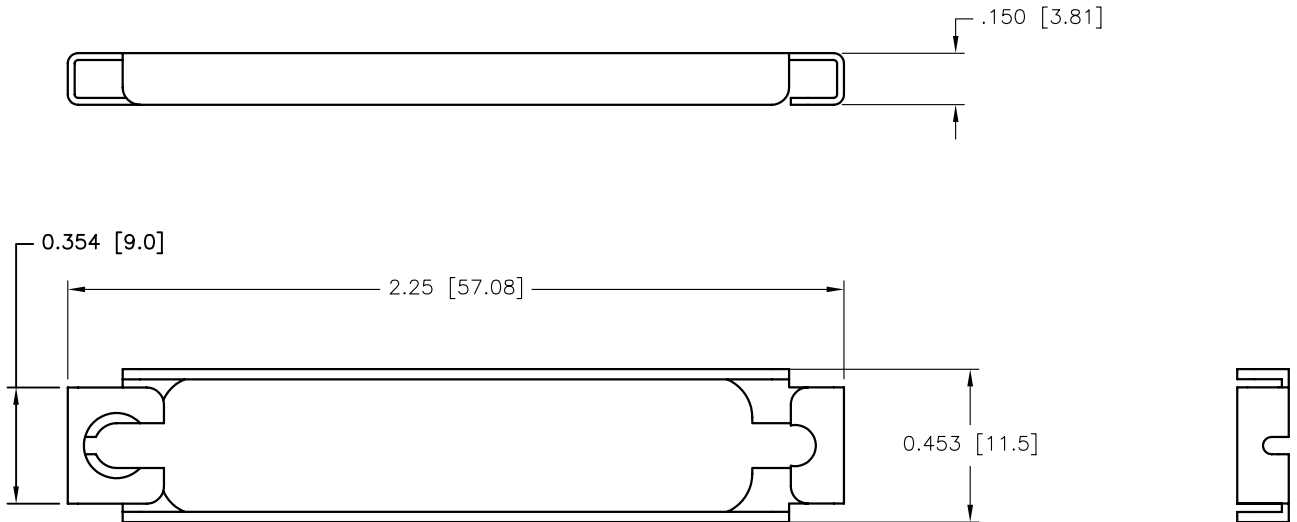


REV	DATE	DESCRIPTION	APP
A	29-JAN-07	ECN 0629	



NOTES:

1. SLIDE LATCH: STAINLESS STEEL
2. #4-40 SCREW: STEEL - NICKEL PLATED
3. FLAT WASHER: STEEL - NICKEL PLATED
4. KIT CONSISTS OF:
 - 1 - SLIDE LATCH
 - 2 - #4-40 SCREWS
5. COMPLIANCE NOTE:
PART MUST BE IN COMPLIANCE TO:
DIRECTIVE 2002/95/EC of 27 January 2003 [RoHS]

THIS IS A CONTROLLED DOCUMENT AND IS SUBJECT TO CHANGE. CONTACT NORTHERN TECHNOLOGIES ENGINEERING FOR THE LATEST REVISION.

UNLESS OTHERWISE SPECIFIED		SIGNATURES	DATE	Northern Technologies		THIS DRAWING IS THE PROPERTY OF NORTHERN TECHNOLOGIES AND SHOULD NOT BE REPRODUCED WITHOUT NORTHERN TECHNOLOGIES WRITTEN PERMISSION.	
1. ALL DIMENSIONS ARE IN INCHES (MM) 2. DIMENSIONS ARE TYPICAL	DRAWN	Luis C.	28-SEP-05	PART NUMBER		C89E014022	
	CHECKED	JSD	28-SEP-05	DESCRIPTION		25C SLIDE LATCH KIT [RoHS]	
	ENG			SHEET	CODE	DWG NO.	
	ISSUED		28-SEP-05	1	7100_196	7100-500-196	
			SCALE	N.T.S.			SHEET 1 OF 1