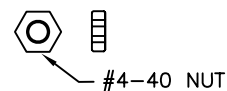
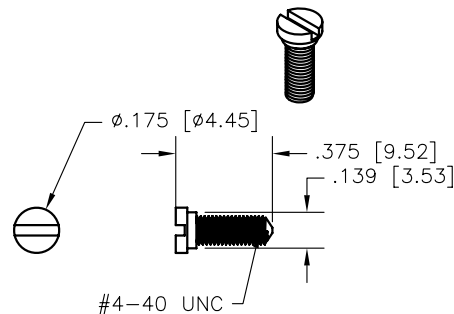
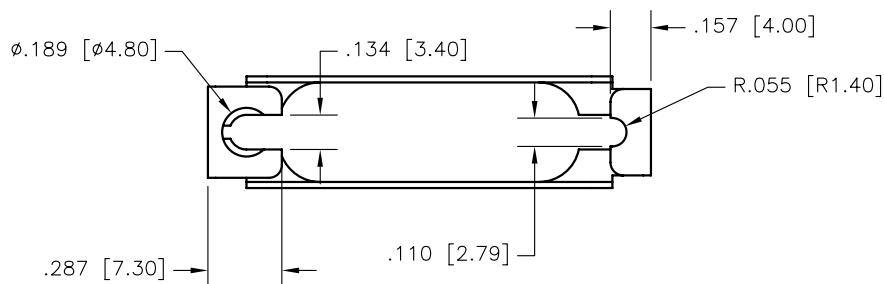
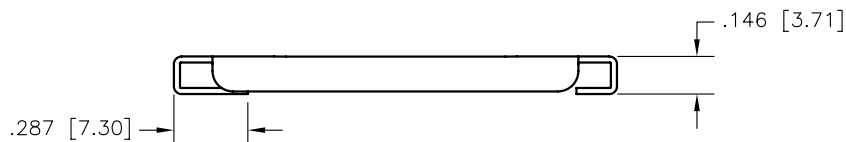
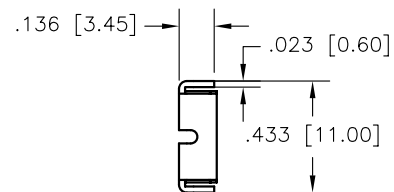
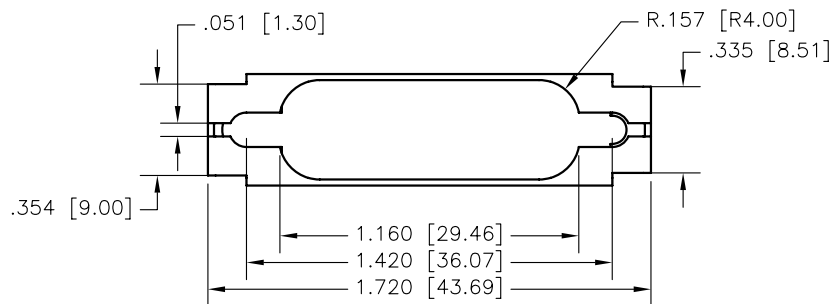
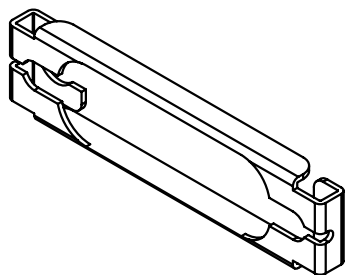


REV	DATE	DESCRIPTION	APP



- NOTES:
 1. SLIDE LATCH MATERIAL: STAINLESS STEEL
 2. HARDWARE: NICKEL PLATED STEEL
 3. KIT CONSISTS OF:
 1 - SLIDE LATCH
 2 - SLIDE LATCH SCREWS
 2 - #4 FLAT WASHERS
 2 - #4 SPLIT LOCK WASHERS
 2 - #4-40 NUTS



THIS IS A CONTROLLED DOCUMENT AND IS SUBJECT TO CHANGE. CONTACT NORTHERN TECHNOLOGIES ENGINEERING FOR THE LATEST REVISION.

UNLESS OTHERWISE SPECIFIED	SIGNATURES	DATE	Northern Technologies		THIS DRAWING IS THE PROPERTY OF NORTHERN TECHNOLOGIES AND SHOULD NOT BE REPRODUCED WITHOUT NORTHERN TECHNOLOGIES WRITTEN PERMISSION.
	DRAWN JSD	17-MAR-09			
1. DIMENSIONS IN INCHES [MM] 2. TOLERANCE UNLESS OTHERWISE SPECIFIED .XXX ± .005 [0.127] .XX ± .02 [0.508] .X ± .03 [0.762] FRACT. ± 1/32 ANGULAR ± 1/2°	CHECKED SCN	17-MAR-09	PART NUMBER C89E014021BK		
	ENG		DESCRIPTION 15C SLIDE LATCH KIT FULL TYPE 2		
	ISSUED	17-MAR-09	SHEET 1	CODE 7100_042K	DWG NO. 7100-500-042K
			SCALE N.T.S.	SHEET 1 OF 1	