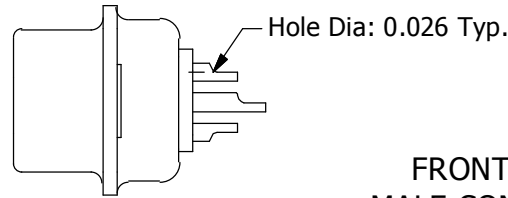
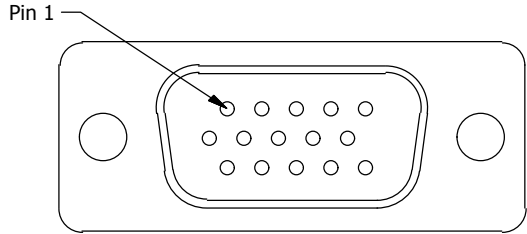
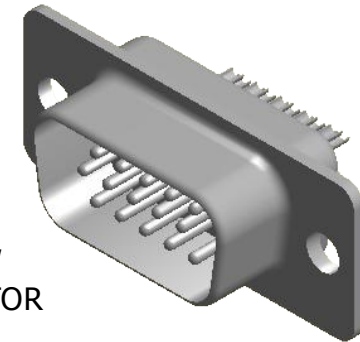


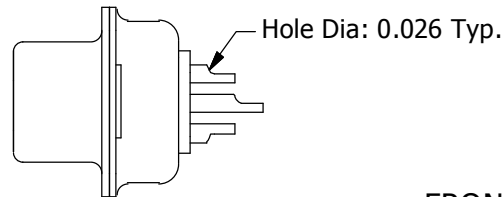
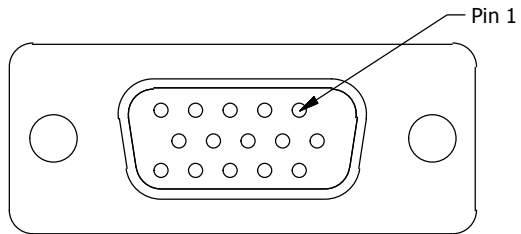
FRONT VIEW - MALE CONNECTOR



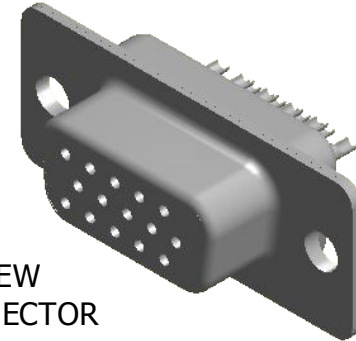
FRONT VIEW
MALE CONNECTOR



FRONT VIEW - FEMALE CONNECTOR



FRONT VIEW
FEMALE CONNECTOR



Maximum Wire Gauge: 24 AWG

DRAWN	JSD	31-AUG-12
CHECKED	SCN	31-AUG-12
ISSUED		31-AUG-12

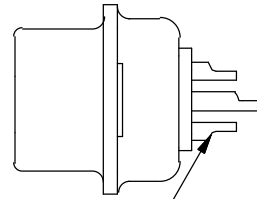
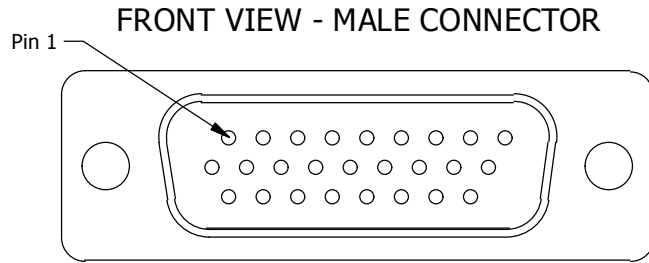
Northern Technologies

THIS DRAWING IS THE PROPERTY OF NORTHERN TECHNOLOGIES AND SHOULD NOT BE REPRODUCED WITHOUT NORTHERN TECHNOLOGIES WRITTEN PERMISSION.

PART NUMBER N/A
DESCRIPTION (X)D3E15 SERIES SOLDER CUP PIN I.D.

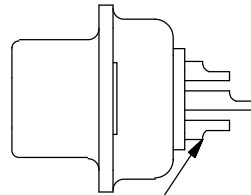
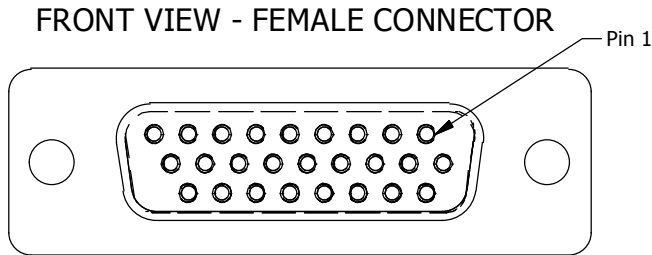
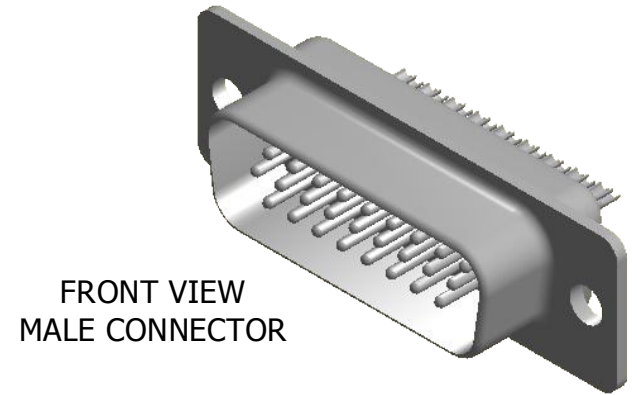
SIZE	CODE	DWG NO.	REV
A	180_078	0002-180-078	-
SCALE	N.T.S.	SHEET	1 OF 1

THIS IS A CONTROLLED DOCUMENT AND IS SUBJECT TO CHANGE. CONTACT NORTHERN TECHNOLOGIES ENGINEERING FOR THE LATEST REVISION.

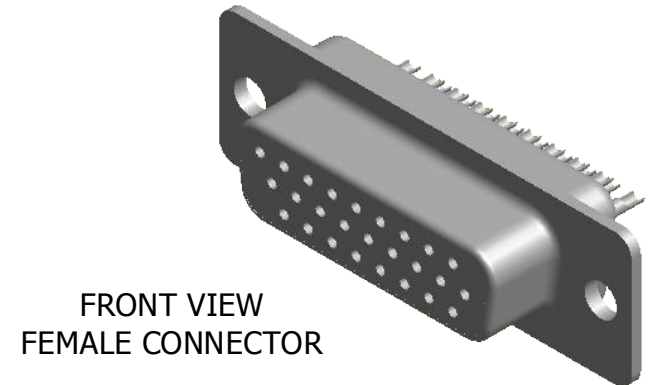


Hole Dia: 0.026 Typ.

Maximum Wire Gauge: 24 AWG



Hole Dia: 0.026 Typ.



DRAWN	JSD	24-JUL-12
CHECKED	SCN	24-JUL-12
ISSUED		24-JUL-12

Northern Technologies

THIS DRAWING IS THE PROPERTY OF NORTHERN TECHNOLOGIES AND SHOULD NOT BE REPRODUCED WITHOUT NORTHERN TECHNOLOGIES WRITTEN PERMISSION.

PART NUMBER N/A

DESCRIPTION (X)D3E26 SOLDER CUP SERIES PIN I.D.

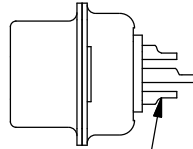
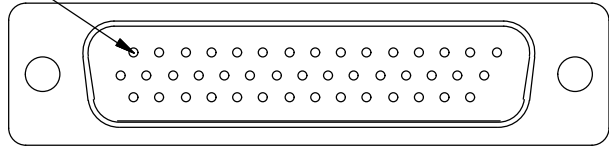
SIZE	CODE	DWG NO.	REV
A	180_079	0002-180-079	-
SCALE	N.T.S.	SHEET	1 OF 1

THIS IS A CONTROLLED DOCUMENT AND IS SUBJECT TO CHANGE. CONTACT NORTHERN TECHNOLOGIES ENGINEERING FOR THE LATEST REVISION.

2

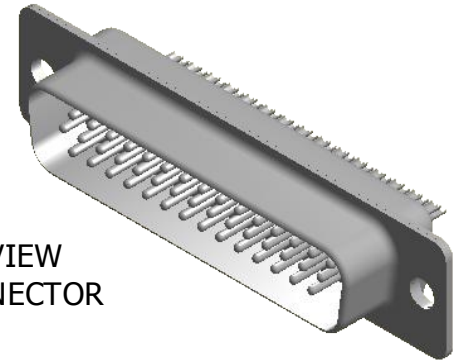
1

Pin 1 FRONT VIEW - MALE CONNECTOR



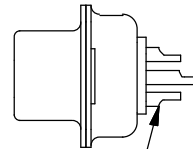
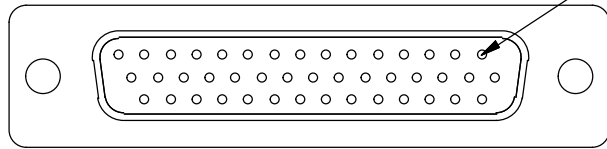
Hole Dia: 0.026 Typ.

FRONT VIEW MALE CONNECTOR



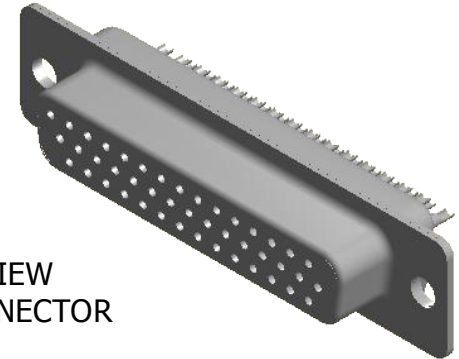
Maximum Wire Gauge: 24 AWG

Pin 1 FRONT VIEW - FEMALE CONNECTOR



Hole Dia: 0.026 Typ.

FRONT VIEW FEMALE CONNECTOR



DRAWN	JSD	31-AUG-12
CHECKED	SCN	31-AUG-12
ISSUED		31-AUG-12

Northern Technologies

THIS DRAWING IS THE PROPERTY OF NORTHERN TECHNOLOGIES AND SHOULD NOT BE REPRODUCED WITHOUT NORTHERN TECHNOLOGIES WRITTEN PERMISSION.

PART NUMBER N/A
DESCRIPTION (X)D3E44 SOLDER CUP SERIES PIN I.D.

THIS IS A CONTROLLED DOCUMENT AND IS SUBJECT TO CHANGE. CONTACT NORTHERN TECHNOLOGIES ENGINEERING FOR THE LATEST REVISION.

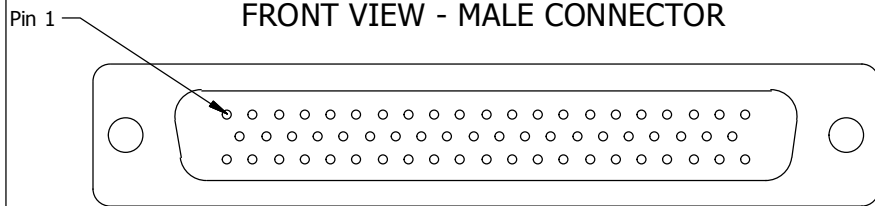
SIZE	CODE	DWG NO.	REV
A	180_080	0002-180-080	-
SCALE	N.T.S.	SHEET	1 OF 1

2

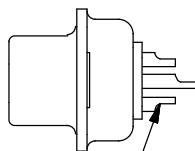
1

2

1

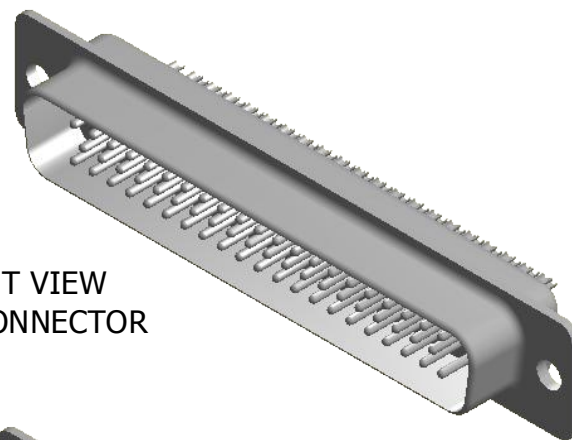


FRONT VIEW - MALE CONNECTOR

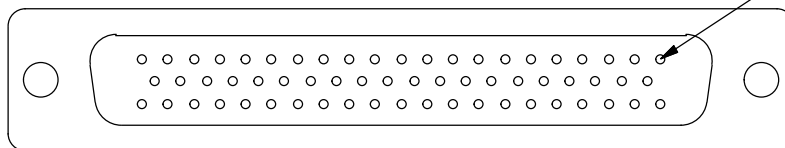


Hole Dia: 0.026 Typ.

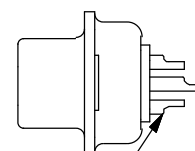
FRONT VIEW MALE CONNECTOR



Maximum Wire Gauge: 24 AWG

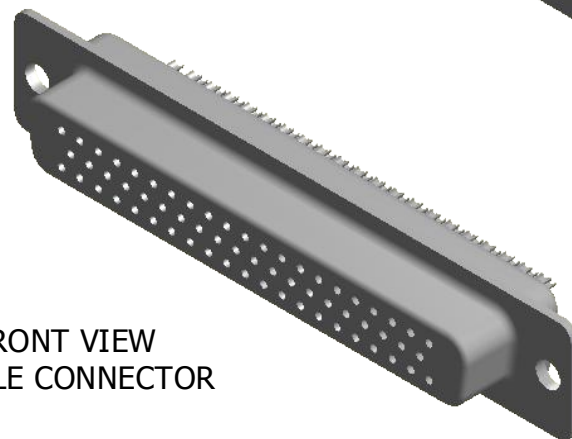


FRONT VIEW - FEMALE CONNECTOR



Hole Dia: 0.026 Typ.

FRONT VIEW FEMALE CONNECTOR



DRAWN	JSD	31-AUG-12
CHECKED	SCN	31-AUG-12
ISSUED		31-AUG-12

Northern Technologies

THIS DRAWING IS THE PROPERTY OF NORTHERN TECHNOLOGIES AND SHOULD NOT BE REPRODUCED WITHOUT NORTHERN TECHNOLOGIES WRITTEN PERMISSION.

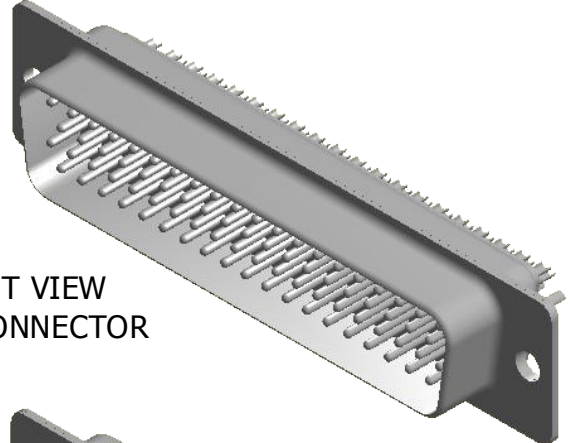
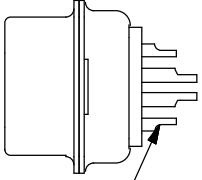
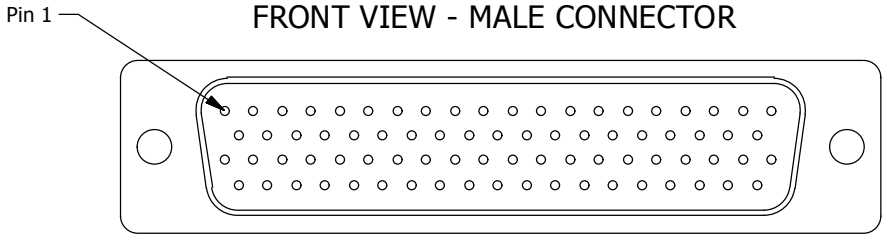
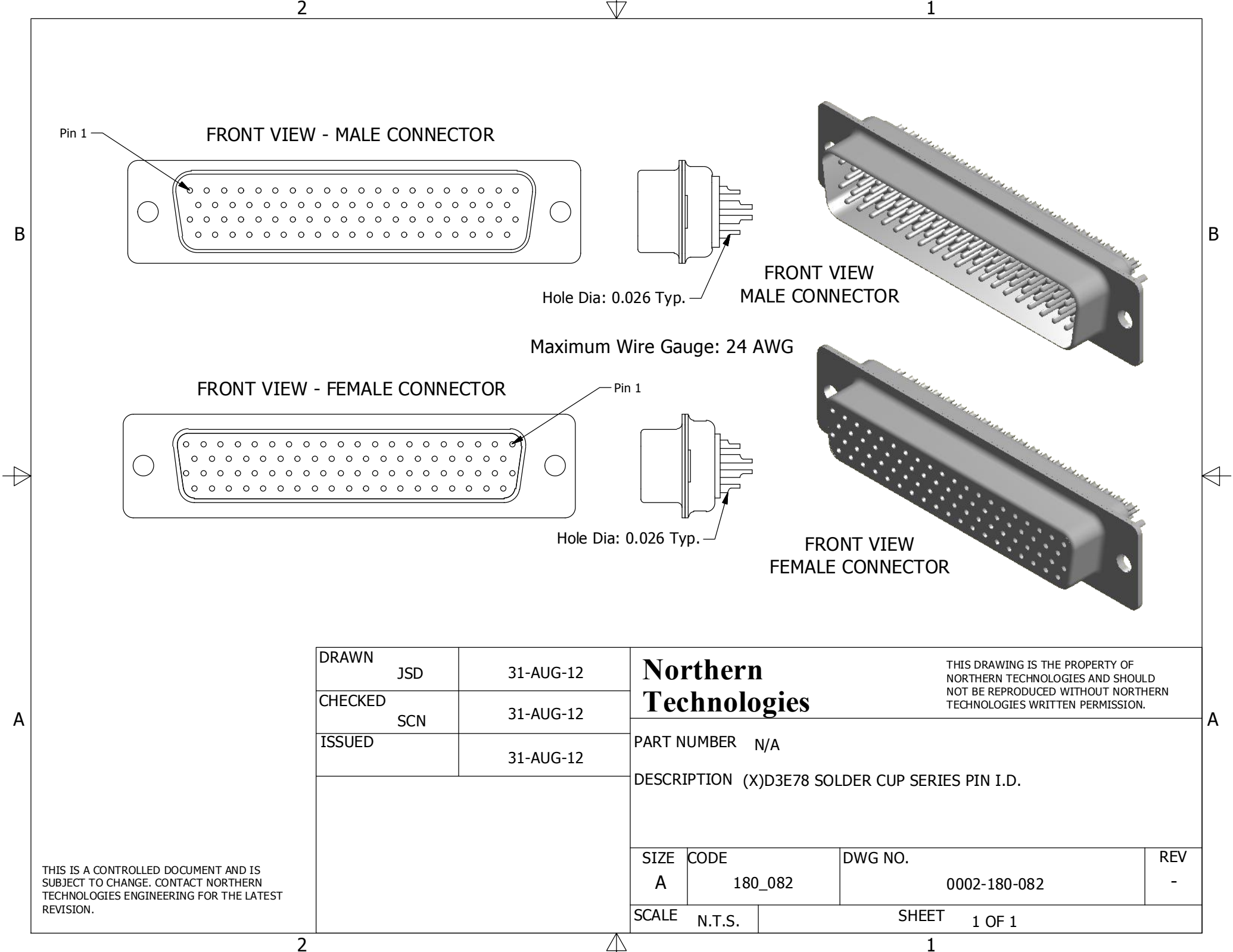
PART NUMBER N/A
DESCRIPTION (X)D3E62 SOLDER CUP SERIES PIN I.D.

SIZE	CODE	DWG NO.	REV
A	180_081	0002-180-081	-
SCALE	N.T.S.	SHEET	1 OF 1

THIS IS A CONTROLLED DOCUMENT AND IS SUBJECT TO CHANGE. CONTACT NORTHERN TECHNOLOGIES ENGINEERING FOR THE LATEST REVISION.

2

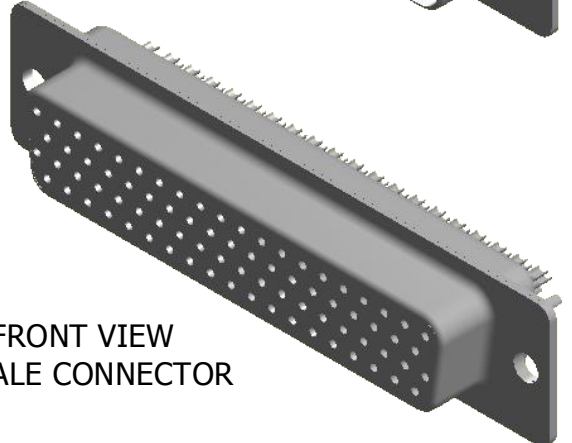
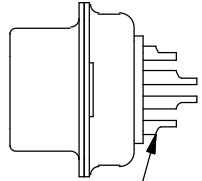
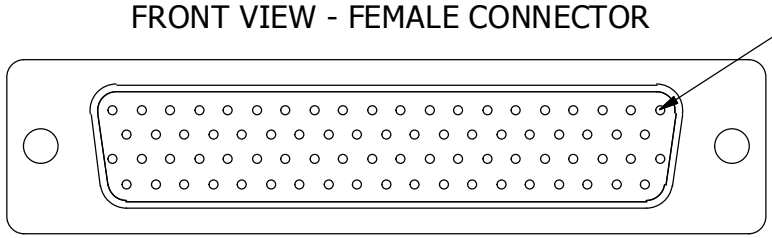
1



Hole Dia: 0.026 Typ.

FRONT VIEW MALE CONNECTOR

Maximum Wire Gauge: 24 AWG



Hole Dia: 0.026 Typ.

FRONT VIEW FEMALE CONNECTOR

DRAWN	JSD	31-AUG-12
CHECKED	SCN	31-AUG-12
ISSUED		31-AUG-12

Northern Technologies

THIS DRAWING IS THE PROPERTY OF NORTHERN TECHNOLOGIES AND SHOULD NOT BE REPRODUCED WITHOUT NORTHERN TECHNOLOGIES WRITTEN PERMISSION.

PART NUMBER		N/A	
DESCRIPTION (X)D3E78 SOLDER CUP SERIES PIN I.D.			

SIZE	CODE	DWG NO.	REV
A	180_082	0002-180-082	-

SCALE	N.T.S.	SHEET	1 OF 1
-------	--------	-------	--------

THIS IS A CONTROLLED DOCUMENT AND IS SUBJECT TO CHANGE. CONTACT NORTHERN TECHNOLOGIES ENGINEERING FOR THE LATEST REVISION.