

# Northern Technologies

## Product Discontinuation Announcement

April 11, 2020

### **D-Sub Contact – Strip Form - 10K Reels Part #s: WDCTEPL1020AF & WDCTESL1020AF**

Due to declining sales and increased challenges in maintaining product conformance, these products are now being discontinued.

The cost of maintaining these products have increased to the point where they can no longer be sustained.

Molds are mature and re-tooling is not viable based on current production volume.

Parts will only be offered until inventories are depleted.

#### **Discontinued Product Part Numbers**

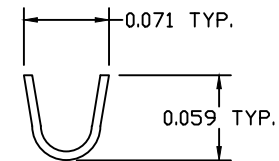
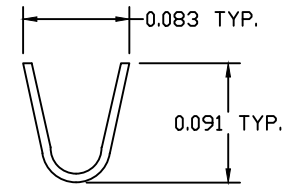
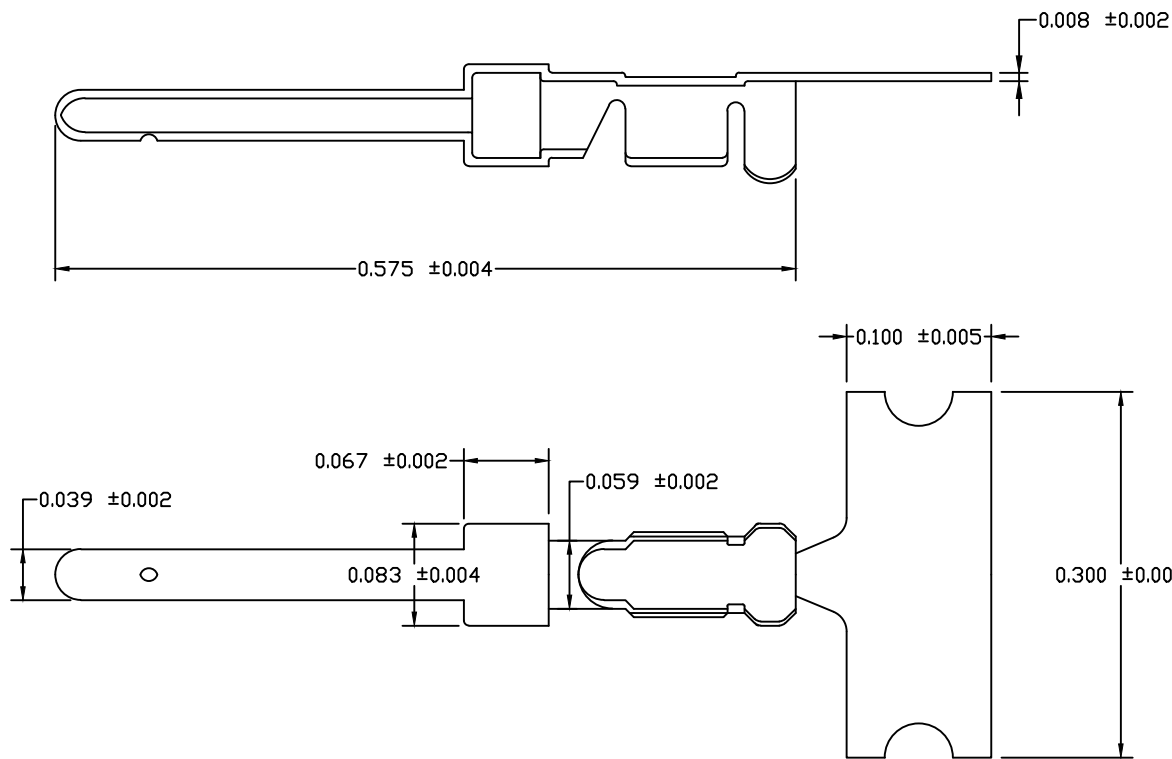
Male Strip Form Part Number: WDCTEPL1020AF

Female Strip Form Part Number: WDCTESL1020AF

For inventory levels contact: [sales@northerntech.com](mailto:sales@northerntech.com)

For unrelated inventory information please contact: [compliance@northerntech.com](mailto:compliance@northerntech.com)

| REV | DATE      | DESCRIPTION | APP |
|-----|-----------|-------------|-----|
| A   | 31-MAY-07 | ECN 0633    |     |
| B   | 08-DEC-14 | ECN 0761    |     |
| C   | 08-JUN-16 | ECN 0785    |     |
| D   | 11-APR-20 | ECN 0814a   |     |



DISCONTINUED

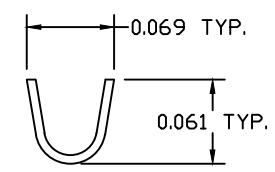
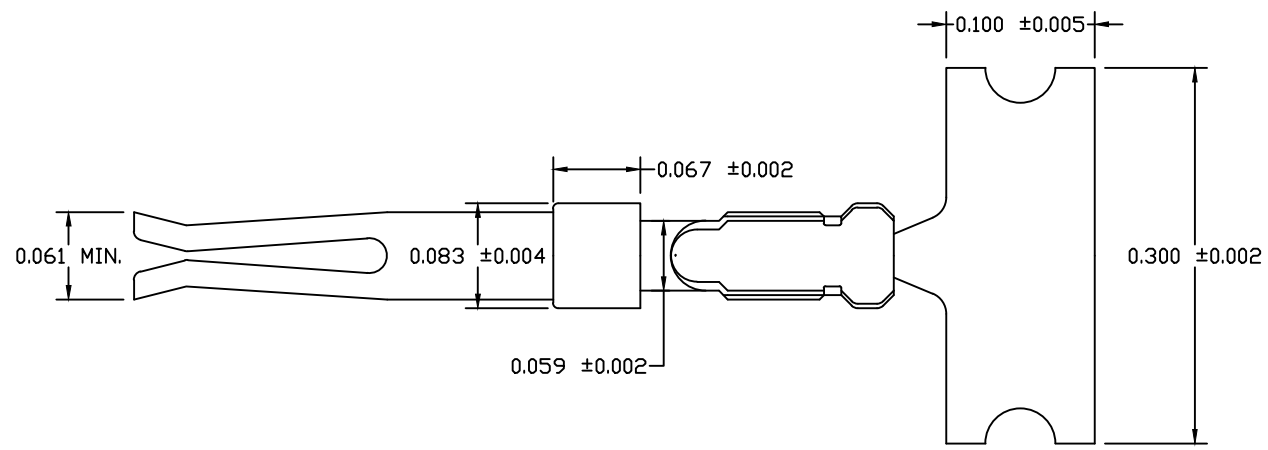
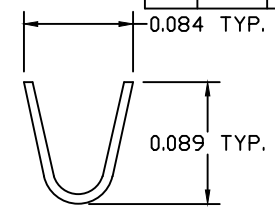
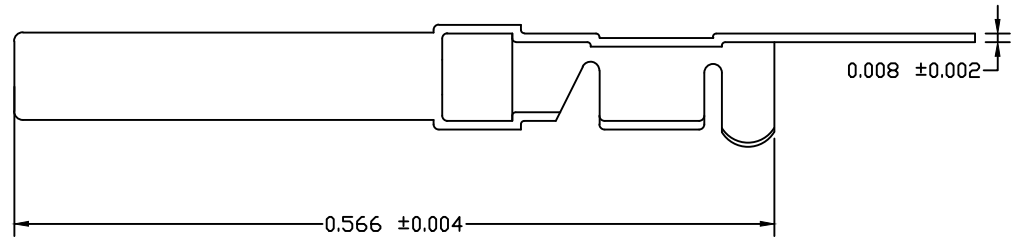
NOTES:

1. MATERIAL: PHOSPHOR BRONZE
2. FINISH MATING SECTION: GOLD FLASH OVER NICKEL
3. FINISH CRIMP SECTION: NICKEL

THIS IS A CONTROLLED DOCUMENT AND IS SUBJECT TO CHANGE. CONTACT NORTHERN TECHNOLOGIES ENGINEERING FOR THE LATEST REVISION.

| UNLESS OTHERWISE SPECIFIED   | SIGNATURES  | DATE      | Northern Technologies     |              | THIS DRAWING IS THE PROPERTY OF NORTHERN TECHNOLOGIES AND SHOULD NOT BE REPRODUCED WITHOUT NORTHERN TECHNOLOGIES WRITTEN PERMISSION. |                      |
|--|-------------|-----------|---------------------------|--------------|--|----------------------|
| 1. DIMENSIONS IN INCHES [MM]<br>2. TOLERANCE UNLESS OTHERWISE SPECIFIED<br>.XXX $\pm$ .005 [0.127]<br>.XX $\pm$ .02 [0.508]<br>.X $\pm$ .03 [0.762]<br>FRACT. $\pm$ 1/32<br>ANGULAR $\pm$ 1/2° | DRAWN JSD   | 30-SEP-05 | PART NUMBER WDCTEPL1020AF |              | DESCRIPTION MALE CONTACT STRIP 10K REEL  |                      |
|  | CHECKED SCN | 30-SEP-05 |                           |              |  |                      |
|  | ISSUED      |           | 30-SEP-05                 | SHEET 1      | CODE 7100_007  | DWG NO. 7100-500-007 |
|  |             |           |                           | SCALE N.T.S. |  | SHEET 1 OF 1         |

| REV | DATE      | DESCRIPTION | APP |
|-----|-----------|-------------|-----|
| A   | 20-NOV-06 | ECN 0625    |     |
| B   | 31-MAY-07 | ECN 0632    |     |
| C   | 08-DEC-14 | ECN 0761    |     |
| D   | 08-JUN-16 | ECN 0785    |     |
| E   | 11-APR-20 | ECN 0814a   |     |



DISCONTINUED

- NOTES:  
 1. MATERIAL: PHOSPHOR BRONZE  
 2. FINISH MATING SECTION: GOLD FLASH OVER NICKEL  
 3. FINISH CRIMP SECTION: NICKEL

THIS IS A CONTROLLED DOCUMENT AND IS SUBJECT TO CHANGE. CONTACT NORTHERN TECHNOLOGIES ENGINEERING FOR THE LATEST REVISION.

|  |             |           |   |               |  |  |
|--|-------------|-----------|---|---------------|--|--|
| UNLESS OTHERWISE SPECIFIED   | SIGNATURES  | DATE      | Northern Technologies                     |               | THIS DRAWING IS THE PROPERTY OF NORTHERN TECHNOLOGIES AND SHOULD NOT BE REPRODUCED WITHOUT NORTHERN TECHNOLOGIES WRITTEN PERMISSION. |  |
|  | DRAWN JSD   | 30-SEP-05 | PART NUMBER WDCTESL1020AF                 |               |  |  |
| 1. DIMENSIONS IN INCHES [MM]<br>2. TOLERANCE UNLESS OTHERWISE SPECIFIED<br>.XXX ± .005 [0.127]<br>.XX ± .02 [0.508]<br>.X ± .03 [0.762]<br>FRACT. ± 1/32<br>ANGULAR ± 1/2° | CHECKED SCN | 30-SEP-05 | DESCRIPTION FEMALE CONTACT STRIP 10K REEL |               |  |  |
|  | ENG         |           | SHEET 1                                   | CODE 7100_008 | DWG NO. 7100-500-008   |  |
|  | ISSUED      | 30-SEP-05 | SCALE N.T.S.                              | SHEET 1 OF 1  |  |  |
|  |             |           |   |               |  |  |