

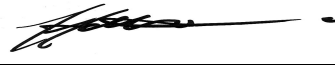




ENGINEERING CHANGE NOTICE

<p style="font-size: 1.2em; font-weight: bold; margin: 0;">Northern Technologies</p> <p><u>CLASS</u></p> <p><input type="checkbox"/> NEXT BUY</p> <p><input checked="" type="checkbox"/> NEXT PRODUCTION</p> <p><input checked="" type="checkbox"/> WORK IN PROCESS</p> <p><input checked="" type="checkbox"/> FINISHED GOODS</p> <p><input type="checkbox"/> RETURNS FROM FIELD</p> <p><input type="checkbox"/> UNITS IN FIELD</p> <p><input checked="" type="checkbox"/> UNITS IN STOCKROOM</p>	<u>ORIGINATOR</u>	<u>DATE</u>	<u>ECN</u>												
	J. DiPietro	19-FEB-24	0847												
	<u>PRODUCT TO BE CHANGED</u>	<u>EFFECTIVE DATE</u>													
	CMP 180 DEGREE FLAME RETARDANT FAMILY OF CONNECTOR COVER PRODUCTS		19-FEB-24												
	<u>P/N</u> REFERENCE DESCRIPTION OF CHANGE														
	<u>REASON FOR CHANGE</u>														
	<p>Due to declining sales and increasing challenges in maintaining product conformance, certain product part numbers are now discontinued. The cost of materials and labor maintaining these products have increased to the point where they can no longer be sustained.</p> <p>Products will be available until current inventory is depleted. No future replacement is planned.</p>														
<u>TYPE OF CHANGE</u>	<u>DESCRIPTION OF CHANGE</u>														
<input checked="" type="checkbox"/> DOCUMENTATION															
<input checked="" type="checkbox"/> <u>SYSPRO / SYSTEM</u>															
<u>REASON FOR CHANGE</u>	<p>Mark as DISCONTINUED as follows:</p> <table style="width: 100%; border: none;"> <tr> <td style="width: 50%;">Update Drawing #</td> <td style="width: 50%;">Change to:</td> </tr> <tr> <td>0002-200-209RevD</td> <td>RevE</td> </tr> <tr> <td>0002-200-210RevC</td> <td>RevD</td> </tr> <tr> <td>0002-200-211RevB</td> <td>RevC</td> </tr> <tr> <td>0002-200-212RevB</td> <td>RevC</td> </tr> <tr> <td>0002-200-213RevB</td> <td>RevC</td> </tr> </table> <p style="margin-top: 20px;">This document contains 7 pages</p>			Update Drawing #	Change to:	0002-200-209RevD	RevE	0002-200-210RevC	RevD	0002-200-211RevB	RevC	0002-200-212RevB	RevC	0002-200-213RevB	RevC
Update Drawing #	Change to:														
0002-200-209RevD	RevE														
0002-200-210RevC	RevD														
0002-200-211RevB	RevC														
0002-200-212RevB	RevC														
0002-200-213RevB	RevC														
<input type="checkbox"/> DRAWING ERROR															
<input type="checkbox"/> FACILITATE MFG															
<input type="checkbox"/> MEET SPECS															
<input type="checkbox"/> PRODUCT IMPROVEMENT															
<input type="checkbox"/> VENDOR															
<input checked="" type="checkbox"/> <u>DISCONTINUED</u>															
<u>DOCUMENTS REVISED</u>															
<input checked="" type="checkbox"/> ASSEMBLY DRAWING															
<input checked="" type="checkbox"/> BILL OF MATERIALS															
<input checked="" type="checkbox"/> QA PROCEDURE															
<input checked="" type="checkbox"/> SCHEMATIC															
<input checked="" type="checkbox"/> FABRICATION DWG															
<input checked="" type="checkbox"/> TEST PROCEDURES															
<input type="checkbox"/> _____															
<u>ENCLOSURES</u>	<u>ENGINEERING</u>		<u>MATERIALS</u>												
															
	<u>PRODUCTION</u>		<u>PRODUCT MKTG</u>												
															
<u>COSTS</u>	<u>QUALITY ASSURANCE</u>		<u>TEST ENGINEERING</u>												
TIME: HRS @ _____ = _____															
MATERIALS _____ = _____	<u>VICE PRESIDENT</u>		<u>DESIGN</u>												
TOTAL = _____															

Northern Technologies

Product Discontinuation Announcement

February 19, 2024

Due to declining sales and increasing challenges in maintaining product conformance, certain product part numbers are now discontinued.

The cost of materials and labor maintaining these products have increased to the point where they can no longer be sustained.

Discontinued Product Part Numbers

F88E300000, F88E301000, F88E310000, F88E311000, F88E320000, F88E321000, F88E330000, F88E331000, F88E340000, F88E341000, F30E300000, F30E301000, F30E310000, F30E311000, F30E320000, F30E321000, F30E330000, F30E331000, F30E340000, F30E341000

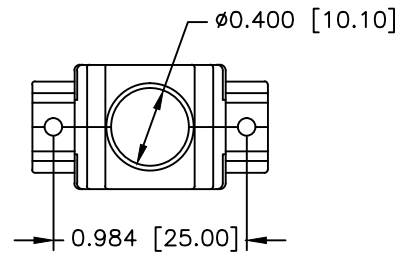
Replacement Product Part Numbers

Products will be available until current inventory is depleted.

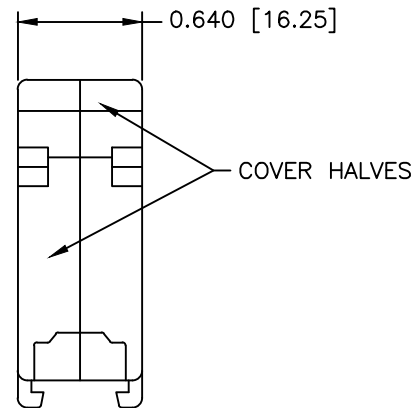
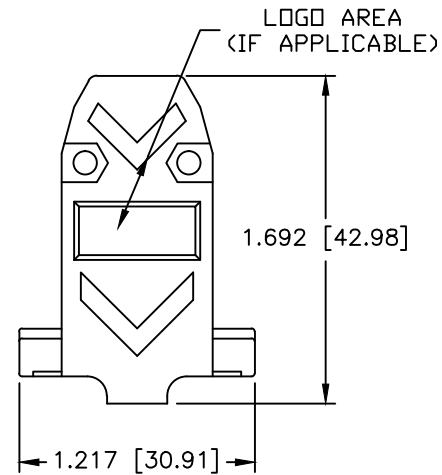
No future replacement is planned.

REF: ECN0847

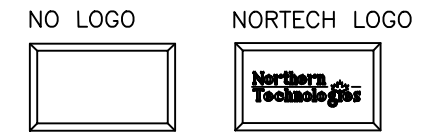
For further information please contact:
sales@northerntech.com (1-800-456-1875)



THIS PRODUCT IS DISCONTINUED



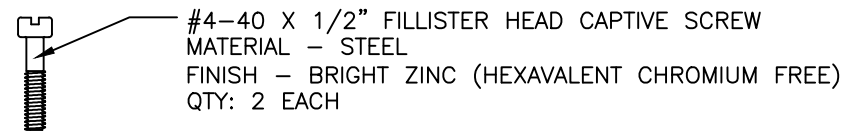
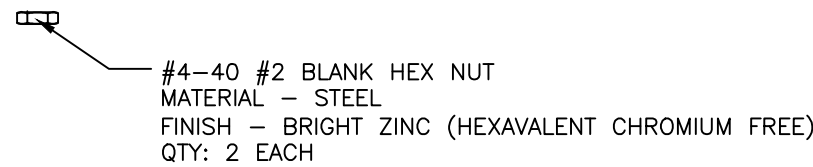
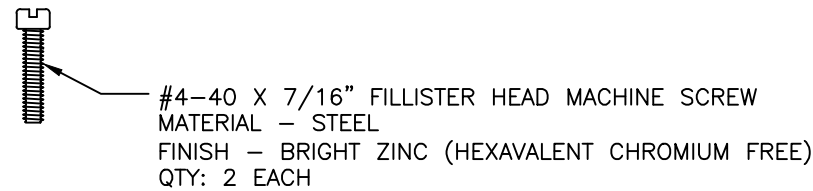
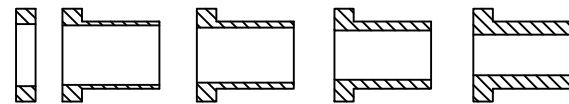
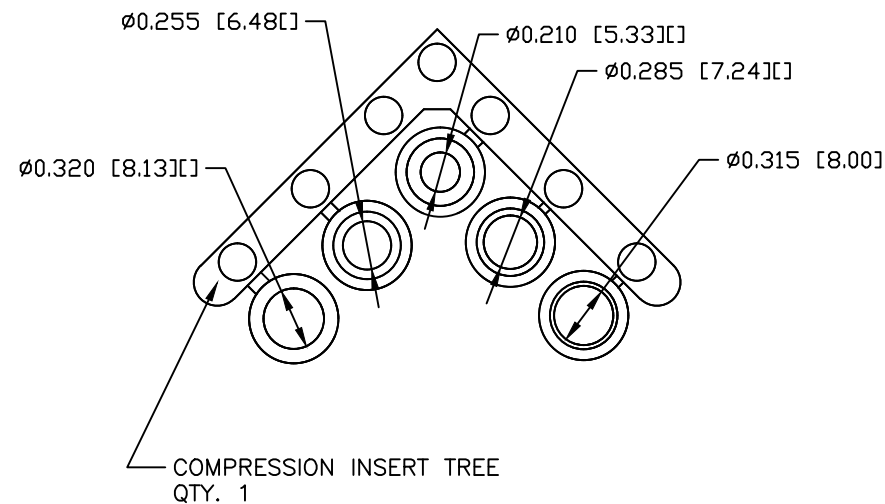
REVISIONS				
ZONE	REV	DESCRIPTION	DATE	APPROVED
	A	ECN 0578	06-OCT-05	
	B	ECN 0603	10-AUG-06	
	C	ECN 0755	12-NOV-14	
	D	ECN 0757	18-NOV-14	
	E	ECN 0847	19-FEB-24	



PART NUMBER INFORMATION

PART#	LOGO STYLE	SUPPLIED
F30E300000	NO LOGO	BULK
F88E300000	NO LOGO	PACKAGED
F30E301000	NORTECH LOGO*	BULK
F88E301000	NORTECH LOGO*	PACKAGED

* - SPECIAL ORDER ITEM - CONTACT NORTHERN TECHNOLOGIES



CONNECTOR COVER:

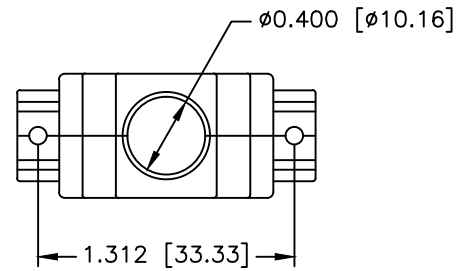
- 1.MATERIAL: ABS COMPOUND UL94V-0
- 2.FINISH: NICKEL PLATING PER NTC SPECIFICATION N/T 000500
- 3.DIMENSIONS: INCHES [MM]
- 4.TOLERANCE: ±0.015 [0.381]

COMPRESSION INSERT TREE

- 1.MATERIAL: THERMOPLASTIC 94V-0
- 2.COLOR: BLACK
- 3.DUROMETER: 75 ±5 TYPE A PER ASTM D2240
- 4.DIMENSIONS: INCHES [MM]
- 5.TOLERANCE: ±0.020 [0.508]

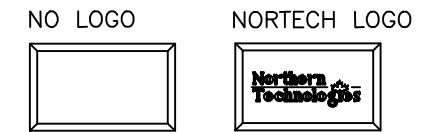
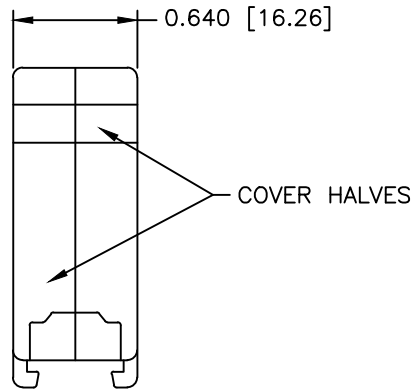
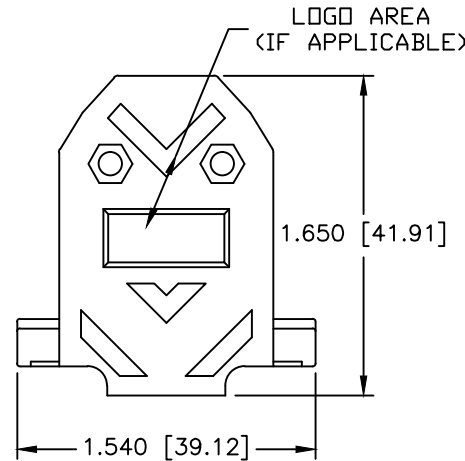
THIS IS A CONTROLLED DOCUMENT AND IS SUBJECT TO CHANGE. CONTACT NORTHERN TECHNOLOGIES ENGINEERING FOR THE LATEST REVISION.

UNLESS OTHERWISE SPECIFIED 1. ALL DIMENSIONS ARE IN INCHES (MM) 2. DIMENSIONS ARE TYPICAL		Northern Technologies THIS DRAWING IS THE PROPERTY OF NORTHERN TECHNOLOGIES AND SHOULD NOT BE REPRODUCED WITHOUT NORTHERN TECHNOLOGIES WRITTEN PERMISSION.		
DRAWN JSD 01-JUL-05		PART NUMBER SEE PART NUMBER INFORMATION DESCRIPTION CMP 09 STR EXIT TWO PIECE METALIZED PLASTIC COVER FR		
CHECKED SCN 01-JUL-05	ISSUED 01-JUL-05	SIZE B	CODE 200_209	DWG NO. 0002-200-209 REV E
		SCALE 1:1	SHEET 1 OF 1	



THIS PRODUCT IS DISCONTINUED

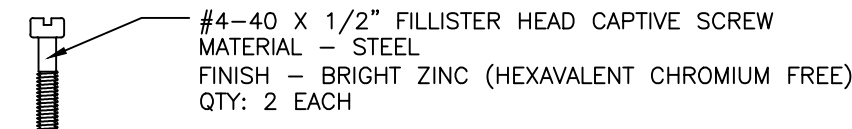
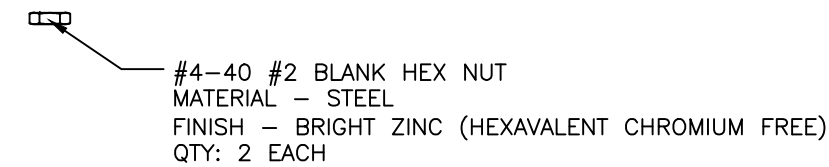
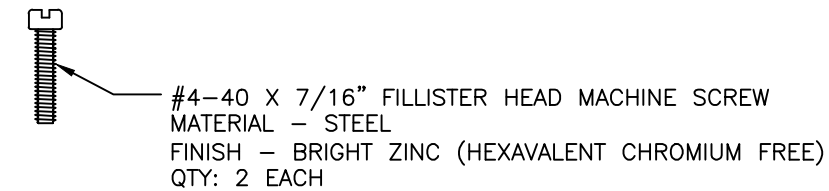
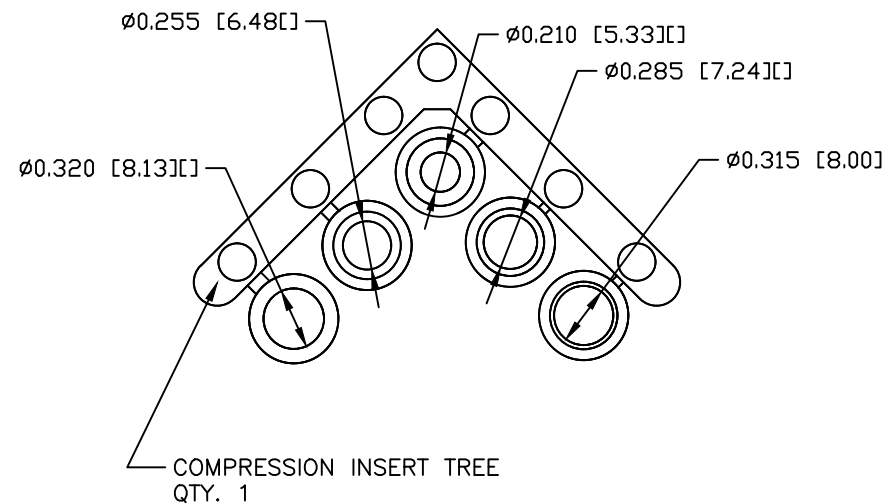
REVISIONS				
ZONE	REV	DESCRIPTION	DATE	APPROVED
	A	ECN 0578	06-OCT-05	
	B	ECN 0603	10-AUG-06	
	C	ECN 0755	12-NOV-14	
	D	ECN 0847	19-FEB-24	



PART NUMBER INFORMATION

PART#	LOGO STYLE	SUPPLIED
F30E310000	NO LOGO	BULK
F88E310000	NO LOGO	PACKAGED
F30E311000	NORTECH LOGO*	BULK
F88E311000	NORTECH LOGO*	PACKAGED

* - SPECIAL ORDER ITEM - CONTACT NORTHERN TECHNOLOGIES

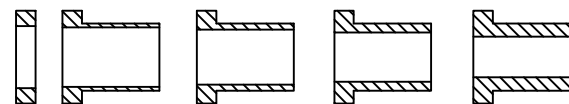


CONNECTOR COVER:

- 1.MATERIAL: ABS COMPOUND UL94V-0
- 2.FINISH: NICKEL PLATING PER NTC SPECIFICATION N/T 000500
- 3.DIMENSIONS: INCHES [MM]
- 4.TOLERANCE: ±0.015 [0.381]

COMPRESSION INSERT TREE

- 1.MATERIAL: THERMOPLASTIC 94V-0
- 2.COLOR: BLACK
- 3.DUROMETER: 75 ±5 TYPE A PER ASTM D2240
- 4.DIMENSIONS: INCHES [MM]
- 5.TOLERANCE: ±0.020 [0.508]



THIS IS A CONTROLLED DOCUMENT AND IS SUBJECT TO CHANGE. CONTACT NORTHERN TECHNOLOGIES ENGINEERING FOR THE LATEST REVISION.

UNLESS OTHERWISE SPECIFIED

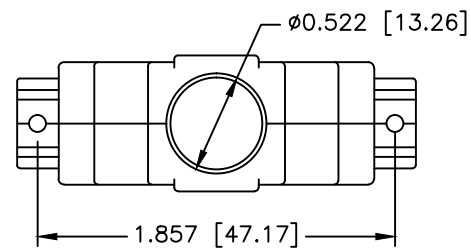
1. ALL DIMENSIONS ARE IN INCHES (MM)
2. DIMENSIONS ARE TYPICAL

Northern Technologies

THIS DRAWING IS THE PROPERTY OF NORTHERN TECHNOLOGIES AND SHOULD NOT BE REPRODUCED WITHOUT NORTHERN TECHNOLOGIES WRITTEN PERMISSION.

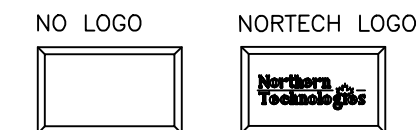
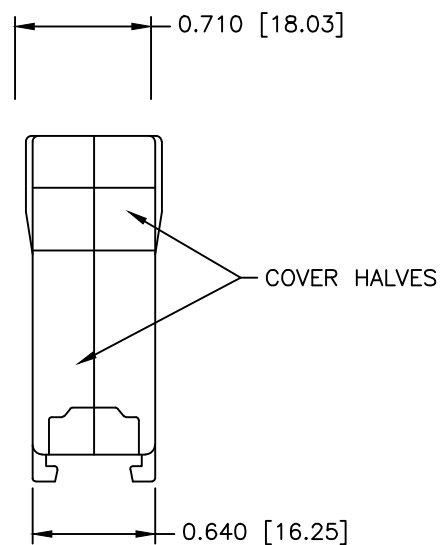
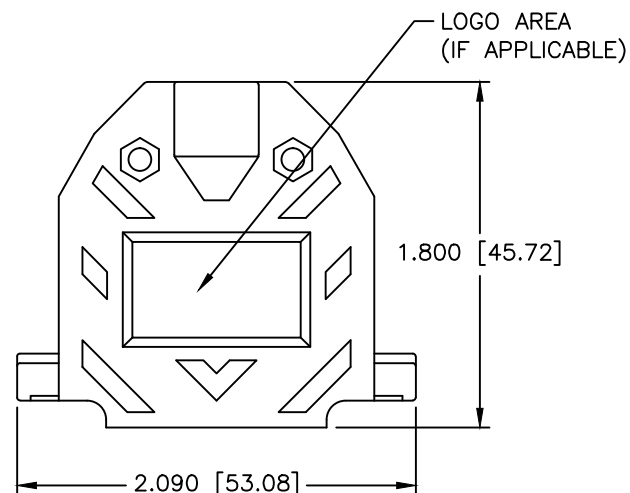
PART NUMBER SEE PART NUMBER INFORMATION
DESCRIPTION CMP 15 STR EXIT TWO PIECE METALIZED PLASTIC COVER FR

DRAWN JSD	01-JUL-05	SIZE B	CODE 200_210	DWG NO. 0002-200-210	REV D
CHECKED SCN	01-JUL-05	SCALE 1:1		SHEET 1 OF 1	
ISSUED	01-JUL-05				



THIS PRODUCT IS
DISCONTINUED

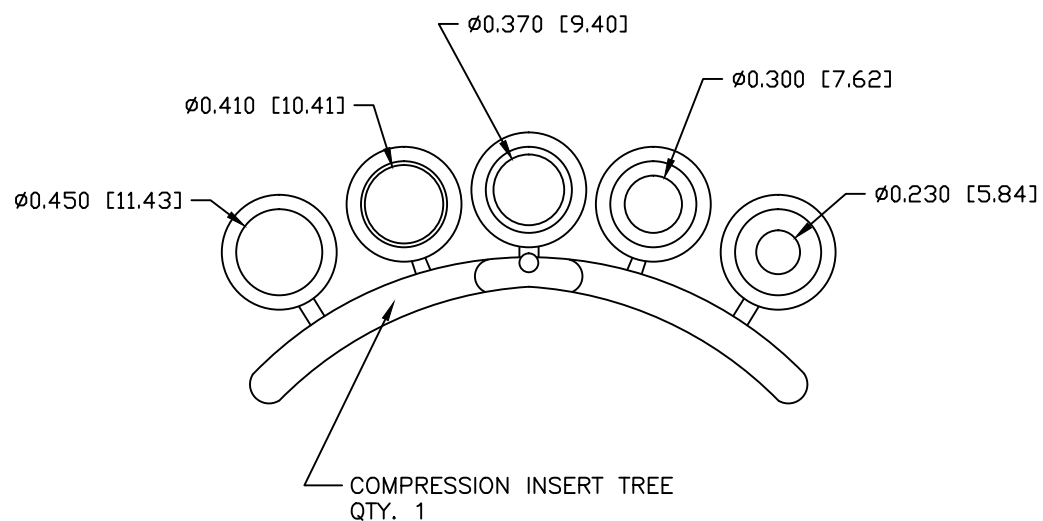
REVISIONS				
ZONE	REV	DESCRIPTION	DATE	APPROVED
	A	ECN 0578	06-OCT-05	
	B	ECN 0603	10-AUG-06	
	C	ECN 0847	19-FEB-24	



PART NUMBER INFORMATION

PART#	LOGO STYLE	SUPPLIED
F30E320000	NO LOGO	BULK
F88E320000	NO LOGO	PACKAGED
F30E321000	NORTECH LOGO*	BULK
F88E321000	NORTECH LOGO*	PACKAGED

* - SPECIAL ORDER ITEM - CONTACT NORTHERN TECHNOLOGIES



#4-40 X 7/16" FILLISTER HEAD MACHINE SCREW
MATERIAL - STEEL
FINISH - BRIGHT ZINC (HEXAVALENT CHROMIUM FREE)
QTY: 2 EACH

#4-40 #2 BLANK HEX NUT
MATERIAL - STEEL
FINISH - BRIGHT ZINC (HEXAVALENT CHROMIUM FREE)
QTY: 2 EACH

#4-40 X 1/2" FILLISTER HEAD CAPTIVE SCREW
MATERIAL - STEEL
FINISH - BRIGHT ZINC (HEXAVALENT CHROMIUM FREE)
QTY: 2 EACH

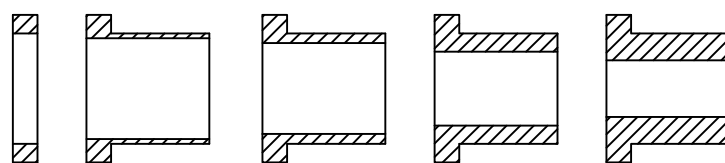
#4 SADDLE WASHER
MATERIAL - STEEL
FINISH - BRIGHT ZINC (HEXAVALENT CHROMIUM FREE)
QTY: 2 EACH

CONNECTOR COVER:

1. MATERIAL: ABS COMPOUND UL94V-0
2. FINISH: NICKEL PLATING PER NTC SPECIFICATION N/T 000500
3. DIMENSIONS: INCHES [MM]
4. TOLERANCE: ±0.015 [0.381]

COMPRESSION INSERT TREE

1. MATERIAL: THERMOPLASTIC 94V-0
2. COLOR: BLACK
3. DUROMETER: 75 ±5 TYPE A PER ASTM D2240
4. DIMENSIONS: INCHES [MM]
5. TOLERANCE: ±0.020 [0.508]



THIS IS A CONTROLLED DOCUMENT AND IS SUBJECT TO CHANGE. CONTACT NORTHERN TECHNOLOGIES ENGINEERING FOR THE LATEST REVISION.

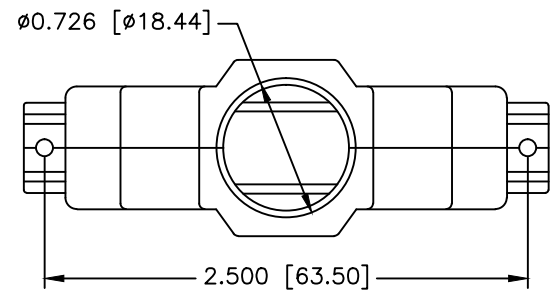
UNLESS OTHERWISE SPECIFIED
1. ALL DIMENSIONS ARE IN INCHES (MM)
2. DIMENSIONS ARE TYPICAL

Northern Technologies

THIS DRAWING IS THE PROPERTY OF NORTHERN TECHNOLOGIES AND SHOULD NOT BE REPRODUCED WITHOUT NORTHERN TECHNOLOGIES WRITTEN PERMISSION.

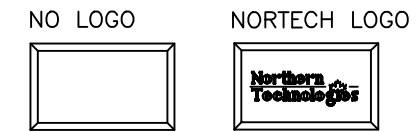
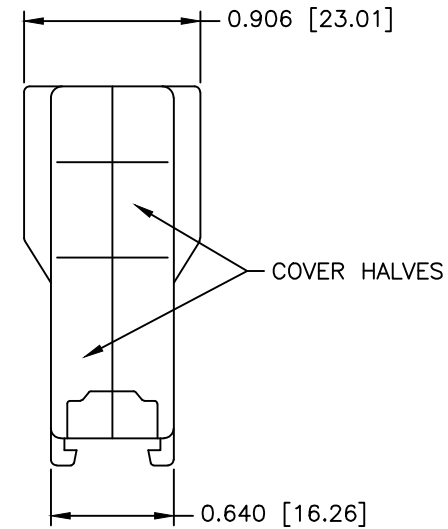
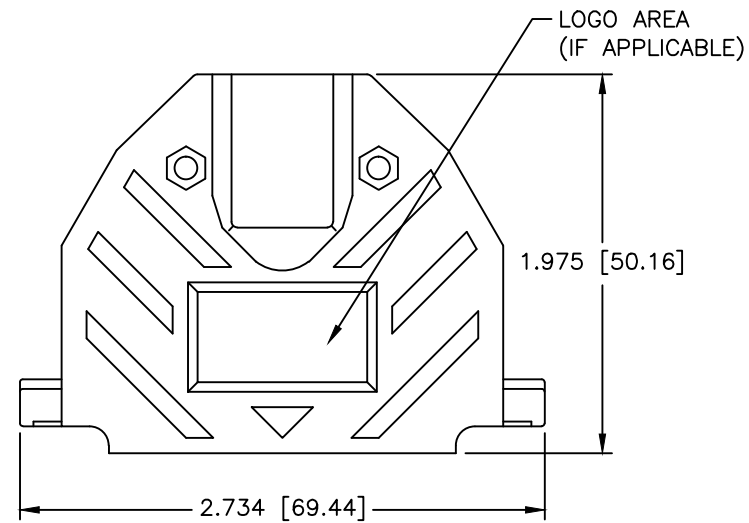
PART NUMBER SEE PART NUMBER INFORMATION
DESCRIPTION CMP 25 STR EXIT TWO PIECE METALIZED PLASTIC COVER FR

DRAWN JSD	01-JUL-05	SIZE B	CODE 200_211	DWG NO. 0002-200-211	REV C
CHECKED SCN	01-JUL-05	SCALE 1:1		SHEET 1 OF 1	
ISSUED	01-JUL-05				



THIS PRODUCT IS DISCONTINUED

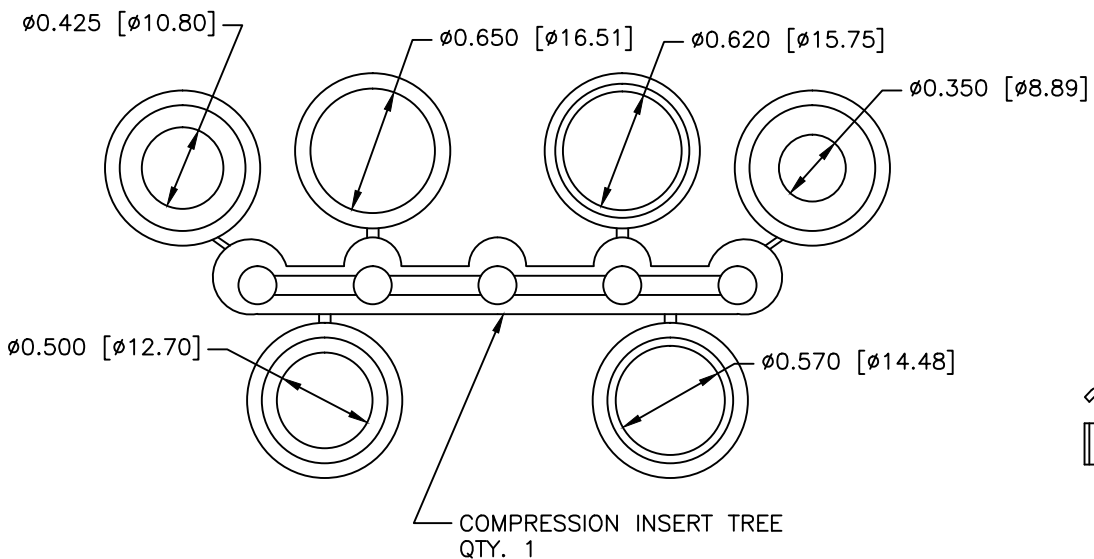
REVISIONS				
ZONE	REV	DESCRIPTION	DATE	APPROVED
	A	ECN 0578	06-OCT-05	
	B	ECN 0603	10-AUG-06	
	C	ECN 0847	19-FEB-24	




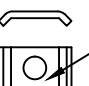


PART NUMBER INFORMATION

PART#	LOGO STYLE	SUPPLIED
F30E330000	NO LOGO	BULK
F88E330000	NO LOGO	PACKAGED
F30E331000	NORTECH LOGO*	BULK
F88E331000	NORTECH LOGO*	PACKAGED

* - SPECIAL ORDER ITEM - CONTACT NORTHERN TECHNOLOGIES



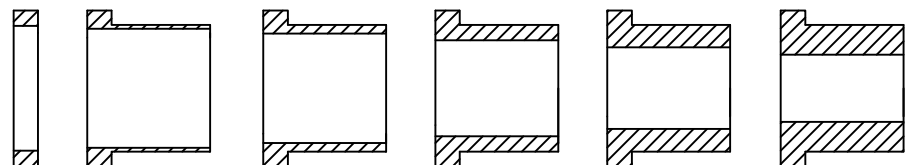
-  #4-40 X 7/16" FILLISTER HEAD MACHINE SCREW
MATERIAL - STEEL
FINISH - BRIGHT ZINC (HEXAVALENT CHROMIUM FREE)
QTY: 2 EACH
-  #4-40 #2 BLANK HEX NUT
MATERIAL - STEEL
FINISH - BRIGHT ZINC (HEXAVALENT CHROMIUM FREE)
QTY: 2 EACH
-  #4-40 X 1/2" FILLISTER HEAD CAPTIVE SCREW
MATERIAL - STEEL
FINISH - BRIGHT ZINC (HEXAVALENT CHROMIUM FREE)
QTY: 2 EACH
-  #4 SADDLE WASHER
MATERIAL - STEEL
FINISH - BRIGHT ZINC (HEXAVALENT CHROMIUM FREE)
QTY: 2 EACH

CONNECTOR COVER:

1. MATERIAL: ABS COMPOUND UL94V-0
2. FINISH: NICKEL PLATING PER NTC SPECIFICATION N/T 000500
3. DIMENSIONS: INCHES [MM]
4. TOLERANCE: ±0.015 [0.381]

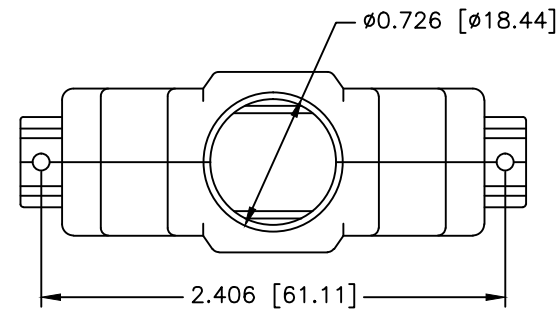
COMPRESSION INSERT TREE

1. MATERIAL: THERMOPLASTIC 94V-0
2. COLOR: BLACK
3. DUROMETER: 75 ±5 TYPE A PER ASTM D2240
4. DIMENSIONS: INCHES [MM]
5. TOLERANCE: ±0.020 [0.508]



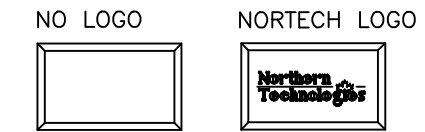
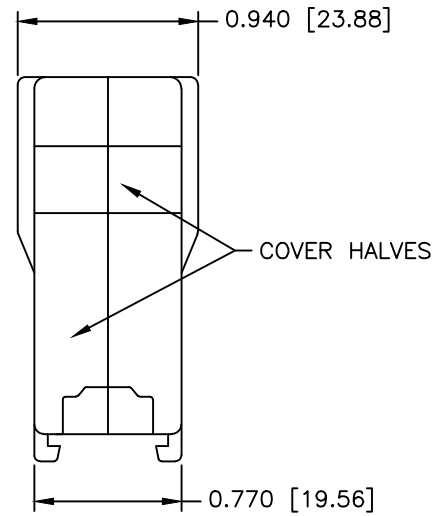
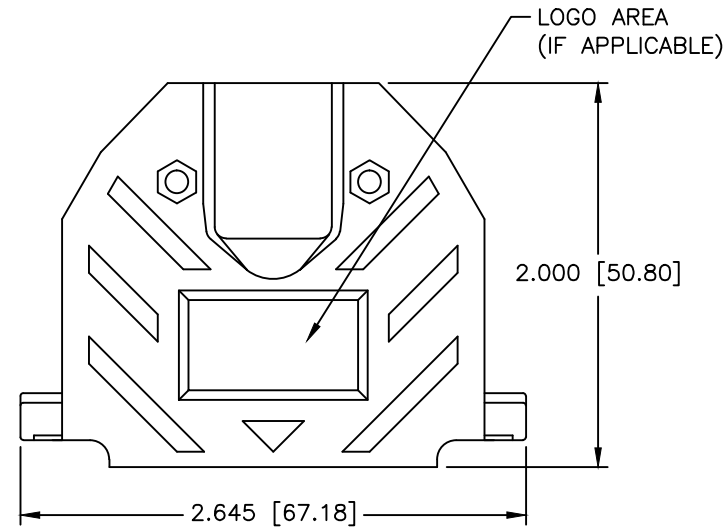
THIS IS A CONTROLLED DOCUMENT AND IS SUBJECT TO CHANGE. CONTACT NORTHERN TECHNOLOGIES ENGINEERING FOR THE LATEST REVISION.

UNLESS OTHERWISE SPECIFIED 1. ALL DIMENSIONS ARE IN INCHES (MM) 2. DIMENSIONS ARE TYPICAL		Northern Technologies <small>THIS DRAWING IS THE PROPERTY OF NORTHERN TECHNOLOGIES AND SHOULD NOT BE REPRODUCED WITHOUT NORTHERN TECHNOLOGIES WRITTEN PERMISSION.</small>		
DRAWN JSD 01-JUL-05		PART NUMBER SEE PART NUMBER INFORMATION		
CHECKED SCN 01-JUL-05		DESCRIPTION CMP 37 STR EXIT TWO PIECE METALIZED PLASTIC COVER FR		
ISSUED 01-JUL-05		SIZE B	CODE 200_212	REV C
SCALE 1:1		DWG NO. 0002-200-212		SHEET 1 OF 1



THIS PRODUCT IS
DISCONTINUED

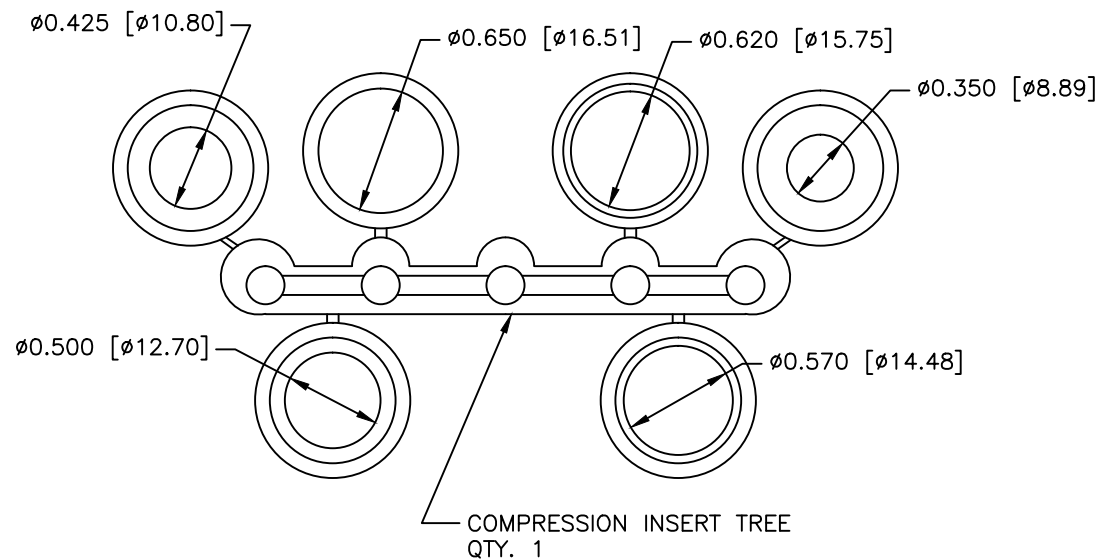
REVISIONS				
ZONE	REV	DESCRIPTION	DATE	APPROVED
	A	ECN 0578	06-OCT-05	
	B	ECN 0603	10-AUG-06	
	C	ECN 0847	19-FEB-24	



PART NUMBER INFORMATION

PART#	LOGO STYLE	SUPPLIED
F30E340000	NO LOGO	BULK
F88E340000	NO LOGO	PACKAGED
F30E341000	NORTECH LOGO*	BULK
F88E341000	NORTECH LOGO*	PACKAGED

* - SPECIAL ORDER ITEM - CONTACT NORTHERN TECHNOLOGIES



#4-40 X 7/16" FILLISTER HEAD MACHINE SCREW
MATERIAL - STEEL
FINISH - BRIGHT ZINC (HEXAVALENT CHROMIUM FREE)
QTY: 2 EACH

#4-40 #2 BLANK HEX NUT
MATERIAL - STEEL
FINISH - BRIGHT ZINC (HEXAVALENT CHROMIUM FREE)
QTY: 2 EACH

#4-40 X 1/2" FILLISTER HEAD CAPTIVE SCREW
MATERIAL - STEEL
FINISH - BRIGHT ZINC (HEXAVALENT CHROMIUM FREE)
QTY: 2 EACH

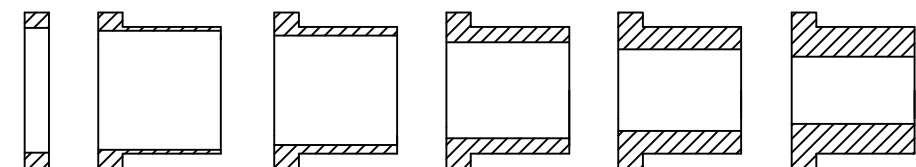
#4 SADDLE WASHER
MATERIAL - STEEL
FINISH - BRIGHT ZINC (HEXAVALENT CHROMIUM FREE)
QTY: 2 EACH

CONNECTOR COVER:

- 1.MATERIAL: ABS COMPOUND UL94V-0
- 2.FINISH: NICKEL PLATING PER NTC SPECIFICATION N/T 000500
- 3.DIMENSIONS: INCHES [MM]
- 4.TOLERANCE: ±0.015 [0.381]

COMPRESSION INSERT TREE

- 1.MATERIAL: THERMOPLASTIC 94V-0
- 2.COLOR: BLACK
- 3.DUROMETER: 75 ±5 TYPE A PER ASTM D2240
- 4.DIMENSIONS: INCHES [MM]
- 5.TOLERANCE: ±0.020 [0.508]



THIS IS A CONTROLLED DOCUMENT AND IS SUBJECT TO CHANGE. CONTACT NORTHERN TECHNOLOGIES ENGINEERING FOR THE LATEST REVISION.

UNLESS OTHERWISE SPECIFIED
1. ALL DIMENSIONS ARE IN INCHES (MM)
2. DIMENSIONS ARE TYPICAL

Northern Technologies

THIS DRAWING IS THE PROPERTY OF NORTHERN TECHNOLOGIES AND SHOULD NOT BE REPRODUCED WITHOUT NORTHERN TECHNOLOGIES WRITTEN PERMISSION.

DRAWN JSD		01-JUL-05		PART NUMBER SEE PART NUMBER INFORMATION	
CHECKED SCN		01-JUL-05		DESCRIPTION CMP 50 STR EXIT TWO PIECE METALIZED PLASTIC COVER FR	
ISSUED	01-JUL-05	SIZE B	CODE 200_213	DWG NO. 0002-200-213	REV C
SCALE 1:1			SHEET 1 OF 1		