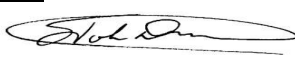






ENGINEERING CHANGE NOTICE

<h2 style="text-align: center;">Northern Technologies</h2>	<u>ORIGINATOR</u> J. DiPietro	<u>DATE</u> 19-FEB-24	<u>ECN</u> 0846
	<u>PRODUCT TO BE CHANGED</u> CMP 45 DEGREE FLAME RETARDANT FAMILY OF CONNECTOR COVER PRODUCTS		<u>EFFECTIVE DATE</u> 19-FEB-24
<u>CLASS</u> <input type="checkbox"/> NEXT BUY <input checked="" type="checkbox"/> NEXT PRODUCTION <input checked="" type="checkbox"/> WORK IN PROCESS <input checked="" type="checkbox"/> FINISHED GOODS <input type="checkbox"/> RETURNS FROM FIELD <input type="checkbox"/> UNITS IN FIELD <input checked="" type="checkbox"/> UNITS IN STOCKROOM	<u>P/N</u> REFERENCE DESCRIPTION OF CHANGE		
<u>TYPE OF CHANGE</u> <input checked="" type="checkbox"/> DOCUMENTATION <input checked="" type="checkbox"/> <u>SYS-PRO / SYSTEM</u>	<u>REASON FOR CHANGE</u> Due to declining sales and increasing challenges in maintaining product conformance, certain product part numbers are now discontinued. The cost of materials and labor maintaining these products have increased to the point where they can no longer be sustained. Products will be available until current inventory is depleted. No future replacement is planned.		
<u>REASON FOR CHANGE</u> <input type="checkbox"/> DRAWING ERROR <input type="checkbox"/> FACILITATE MFG <input type="checkbox"/> MEET SPECS <input type="checkbox"/> PRODUCT IMPROVEMENT <input type="checkbox"/> VENDOR <input checked="" type="checkbox"/> <u>DISCONTINUED</u>	<u>DESCRIPTION OF CHANGE</u> Mark as DISCONTINUED as follows: Update Drawing # Change to: 0002-200-170RevD RevE 0002-200-171RevB RevC 0002-200-172RevB RevC 0002-200-173RevB RevC		
<u>DOCUMENTS REVISED</u> <input checked="" type="checkbox"/> ASSEMBLY DRAWING <input checked="" type="checkbox"/> BILL OF MATERIALS <input checked="" type="checkbox"/> QA PROCEDURE <input checked="" type="checkbox"/> SCHEMATIC <input checked="" type="checkbox"/> FABRICATION DWG <input checked="" type="checkbox"/> TEST PROCEDURES <input type="checkbox"/> _____	This document contains 6 pages		
<u>ENCLOSURES</u>	<u>ENGINEERING</u> 	<u>MATERIALS</u> 	
	<u>PRODUCTION</u> 	<u>PRODUCT MKTG</u>	
<u>COSTS</u> TIME: HRS @ _____ = _____ MATERIALS _____ = _____ TOTAL = _____	<u>QUALITY ASSURANCE</u> 	<u>TEST ENGINEERING</u> 	
	<u>VICE PRESIDENT</u>	<u>DESIGN</u>	

Northern Technologies

Product Discontinuation Announcement

February 19, 2024

Due to declining sales and increasing challenges in maintaining product conformance, certain product part numbers are now discontinued.

The cost of materials and labor maintaining these products have increased to the point where they can no longer be sustained.

Discontinued Product Part Numbers

F88E200000, F88E201000, F88E210000, F88E211000, F88E220000, F88E221000, F88E230000, F88E231000, F30E200000, F30E201000, F30E210000, F30E211000, F30E220000, F30E221000, F30E230000, F30E231000

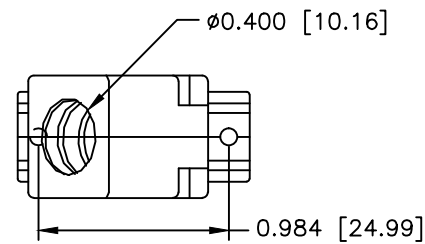
Replacement Product Part Numbers

Products will be available until current inventory is depleted.

No future replacement is planned.

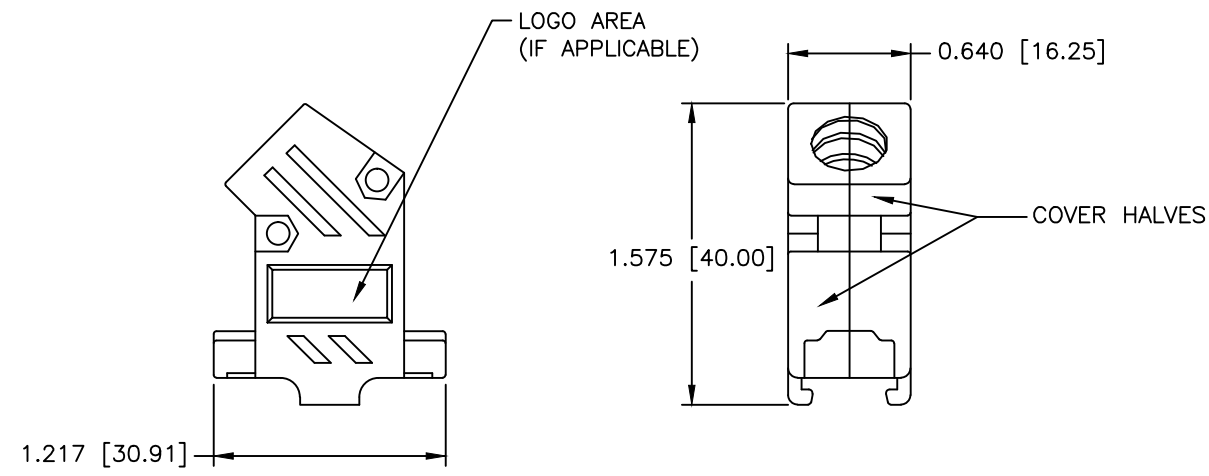
REF: ECN0846

For further information please contact:
sales@northerntech.com (1-800-456-1875)



THIS PRODUCT IS DISCONTINUED

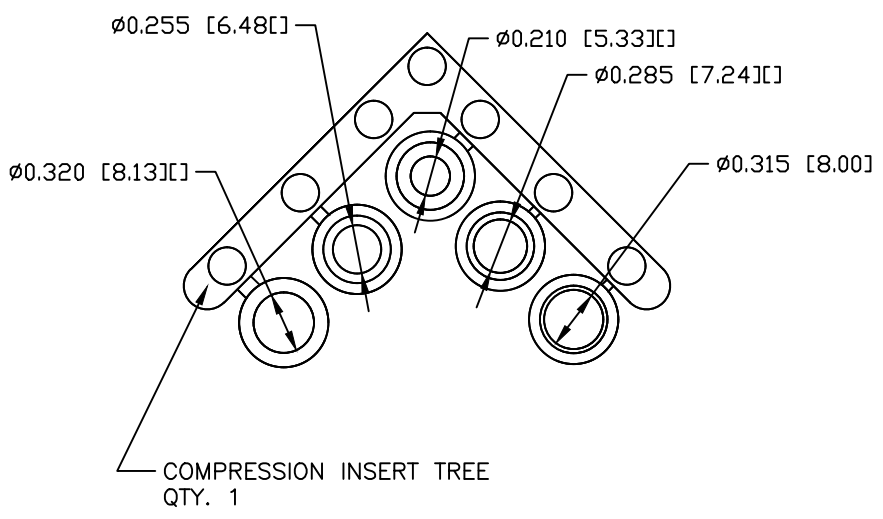
REVISIONS				
ZONE	REV	DESCRIPTION	DATE	APPROVED
	A	ECN 0579	06-OCT-05	
	B	ECN 0603	10-AUG-06	
	C	ECN 0732	31-AUG-13	
	D	ECN 0755	12-NOV-14	
	E	ECN 0846	19-FEB-24	



PART NUMBER INFORMATION

PART#	LOGO STYLE	SUPPLIED
F30E200000	NO LOGO	BULK
F88E200000	NO LOGO	PACKAGED
F30E201000	NORTECH LOGO*	BULK
F88E201000	NORTECH LOGO*	PACKAGED

* - SPECIAL ORDER ITEM - CONTACT NORTHERN TECHNOLOGIES



#4-40 X 7/16" FILLISTER HEAD MACHINE SCREW
MATERIAL - STEEL
FINISH - BRIGHT ZINC (HEXAVALENT CHROMIUM FREE)
QTY: 2 EACH

#4-40 #2 BLANK HEX NUT
MATERIAL - STEEL
FINISH - BRIGHT ZINC (HEXAVALENT CHROMIUM FREE)
QTY: 2 EACH

#4-40 X 1/2" FILLISTER HEAD CAPTIVE SCREW
MATERIAL - STEEL
FINISH - BRIGHT ZINC (HEXAVALENT CHROMIUM FREE)
QTY: 2 EACH

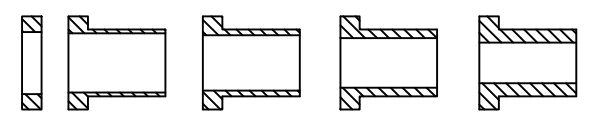
#4 SADDLE WASHER
MATERIAL - STEEL
FINISH - BRIGHT ZINC (HEXAVALENT CHROMIUM FREE)
QTY: 2 EACH

CONNECTOR COVER:

- 1.MATERIAL: ABS COMPOUND UL94V-0
- 2.FINISH: NICKEL PLATING PER NTC SPECIFICATION N/T 000500
- 3.DIMENSIONS: INCHES [MM]
- 4.TOLERANCE: ±0.015 [0.381]

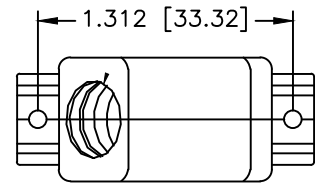
COMPRESSION INSERT TREE

- 1.MATERIAL: THERMOPLASTIC 94V-0
- 2.COLOR: BLACK
- 3.DUROMETER: 75 ±5 TYPE A PER ASTM D2240
- 4.DIMENSIONS: INCHES [MM]
- 5.TOLERANCE: ±0.020 [0.508]



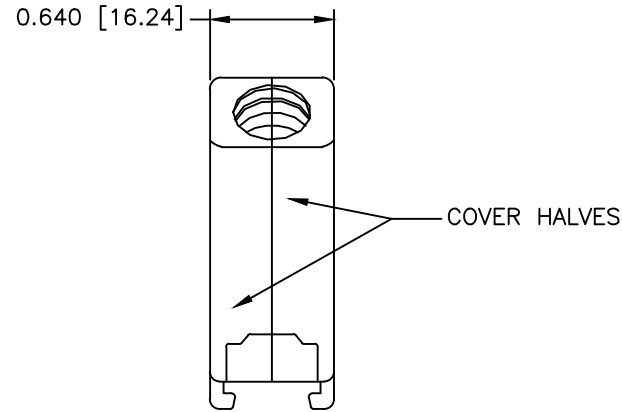
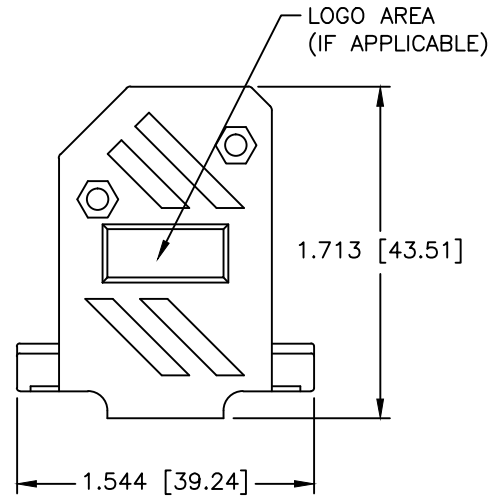
THIS IS A CONTROLLED DOCUMENT AND IS SUBJECT TO CHANGE. CONTACT NORTHERN TECHNOLOGIES ENGINEERING FOR THE LATEST REVISION.

UNLESS OTHERWISE SPECIFIED 1. ALL DIMENSIONS ARE IN INCHES (MM) 2. DIMENSIONS ARE TYPICAL		Northern Technologies <small>THIS DRAWING IS THE PROPERTY OF NORTHERN TECHNOLOGIES AND SHOULD NOT BE REPRODUCED WITHOUT NORTHERN TECHNOLOGIES WRITTEN PERMISSION.</small>		
DRAWN JSD 01-JUL-05		PART NUMBER SEE PART NUMBER INFORMATION		
CHECKED SCN 01-JUL-05		DESCRIPTION CMP 09 45 DEGREE EXIT TWO PIECE METALIZED PLASTIC COVER FR		
ISSUED	01-JUL-05	SIZE B	CODE 200_170	DWG NO. 0002-200-170
		SCALE 1:1	SHEET 1 OF 1	



THIS PRODUCT IS
DISCONTINUED

REVISIONS				
ZONE	REV	DESCRIPTION	DATE	APPROVED
	A	ECN 0604	10-AUG-06	
	B	ECN 0755	12-NOV-14	
	C	ECN 0846	19-FEB-24	



PART NUMBER INFORMATION

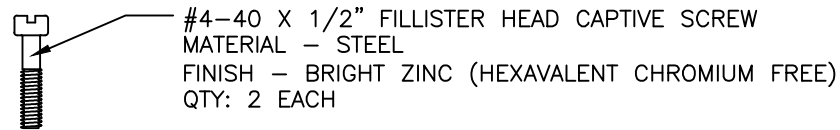
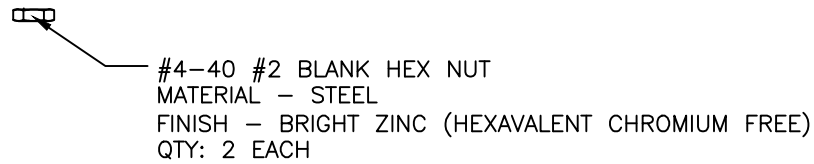
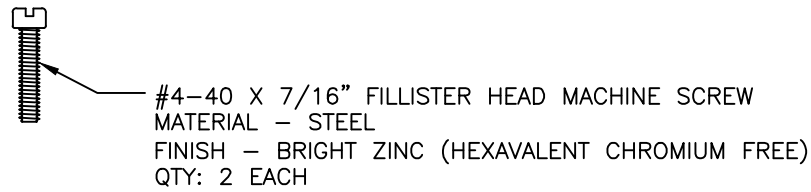
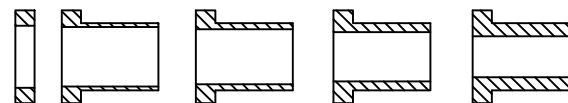
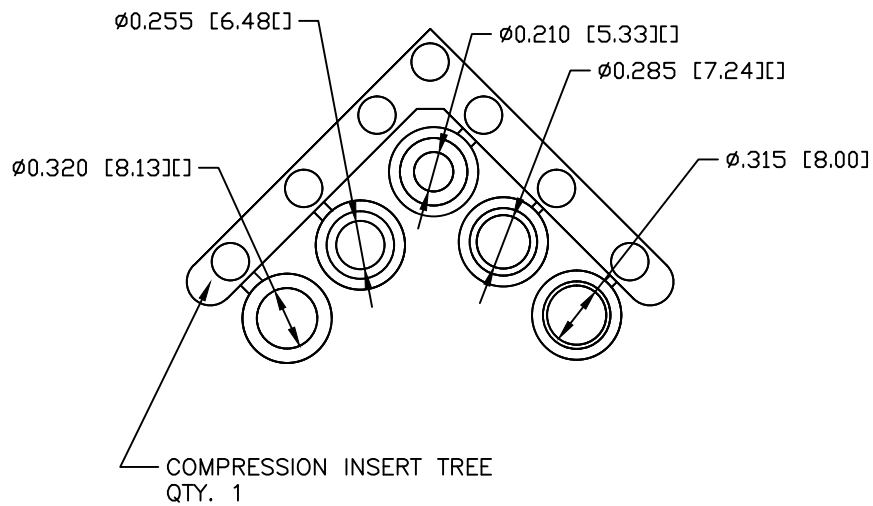
PART#	LOGO STYLE	SUPPLIED
F30E210000	NO LOGO	BULK
F88E210000	NO LOGO	PACKAGED
F30E211000	NORTECH LOGO	BULK
F88E211000	NORTECH LOGO	PACKAGED

CONNECTOR COVER:

- 1.MATERIAL: ABS COMPOUND UL94V-0
- 2.FINISH: NICKEL PLATING PER NTC SPECIFICATION N/T 000500
- 3.DIMENSIONS: INCHES [MM]
- 4.TOLERANCE: ±0.015 [0.381]

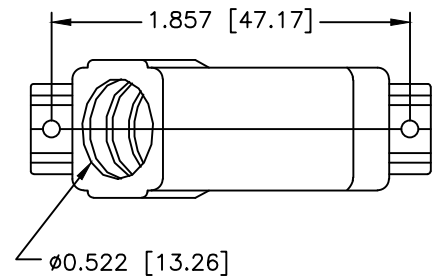
COMPRESSION INSERT TREE

- 1.MATERIAL: THERMOPLASTIC 94V-0
- 2.COLOR: BLACK
- 3.DUROMETER: 75 ±5 TYPE A PER ASTM D2240
- 4.DIMENSIONS: INCHES [MM]
- 5.TOLERANCE: ±0.020 [0.508]



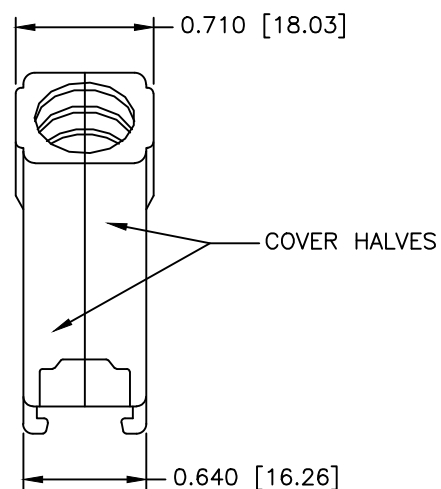
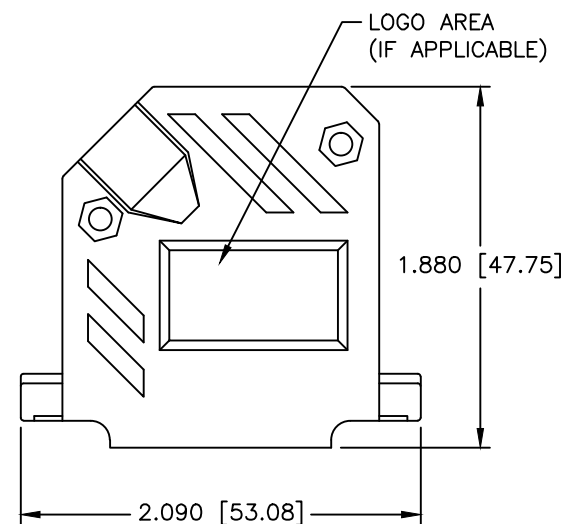
THIS IS A CONTROLLED DOCUMENT AND IS SUBJECT TO CHANGE. CONTACT NORTHERN TECHNOLOGIES ENGINEERING FOR THE LATEST REVISION.

UNLESS OTHERWISE SPECIFIED 1. ALL DIMENSIONS ARE IN INCHES (MM) 2. DIMENSIONS ARE TYPICAL		Northern Technologies <small>THIS DRAWING IS THE PROPERTY OF NORTHERN TECHNOLOGIES AND SHOULD NOT BE REPRODUCED WITHOUT NORTHERN TECHNOLOGIES WRITTEN PERMISSION.</small>		
DRAWN JSD 01-JUL-05		PART NUMBER SEE PART NUMBER INFORMATION DESCRIPTION CMP 15 45 DEGREE EXIT TWO PIECE METALIZED PLASTIC COVER FR		
CHECKED SCN 01-JUL-05	ISSUED 01-JUL-05	SIZE B	CODE 200_171	DWG NO. 0002-200-171 REV C
		SCALE 1:1	SHEET 1 OF 1	



THIS PRODUCT IS DISCONTINUED

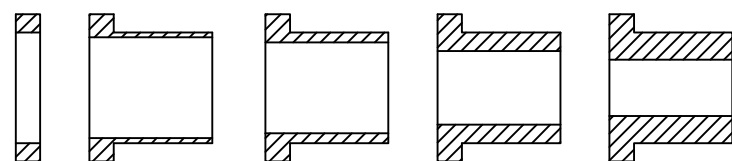
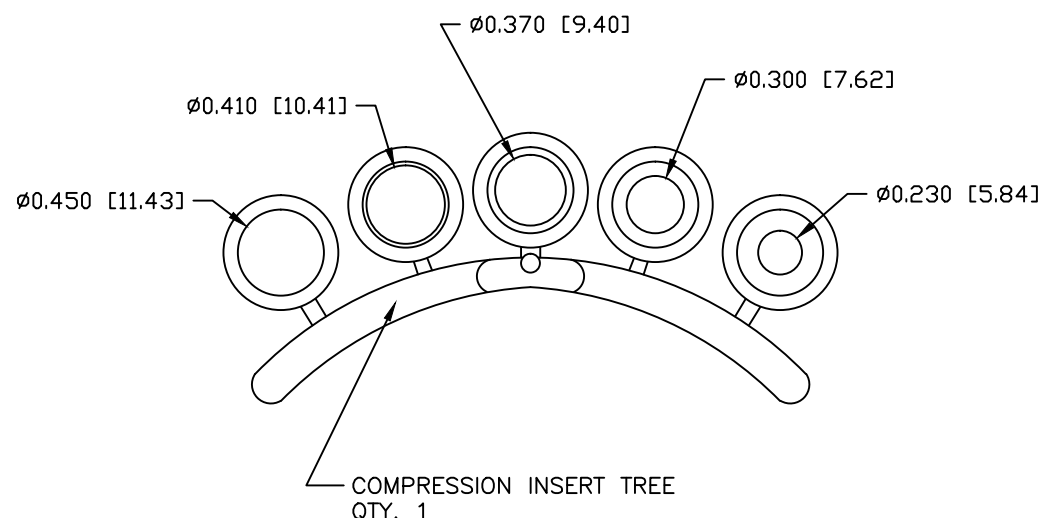
REVISIONS				
ZONE	REV	DESCRIPTION	DATE	APPROVED
	A	ECN 0579	06-OCT-05	
	B	ECN 0603	10-AUG-06	
	C	ECN 0846	19-FEB-24	



PART NUMBER INFORMATION

PART#	LOGO STYLE	SUPPLIED
F30E220000	NO LOGO	BULK
F88E220000	NO LOGO	PACKAGED
F30E221000	NORTECH LOGO*	BULK
F88E221000	NORTECH LOGO*	PACKAGED

* - SPECIAL ORDER ITEM - CONTACT NORTHERN TECHNOLOGIES



#4-40 X 7/16" FILLISTER HEAD MACHINE SCREW
MATERIAL - STEEL
FINISH - BRIGHT ZINC (HEXAVALENT CHROMIUM FREE)
QTY: 2 EACH

#4-40 #2 BLANK HEX NUT
MATERIAL - STEEL
FINISH - BRIGHT ZINC (HEXAVALENT CHROMIUM FREE)
QTY: 2 EACH

#4-40 X 1/2" FILLISTER HEAD CAPTIVE SCREW
MATERIAL - STEEL
FINISH - BRIGHT ZINC (HEXAVALENT CHROMIUM FREE)
QTY: 2 EACH

#4 SADDLE WASHER
MATERIAL - STEEL
FINISH - BRIGHT ZINC (HEXAVALENT CHROMIUM FREE)
QTY: 2 EACH

CONNECTOR COVER:

- 1.MATERIAL: ABS COMPOUND UL94V-0
- 2.FINISH: NICKEL PLATING PER NTC SPECIFICATION N/T 000500
- 3.DIMENSIONS: INCHES [MM]
- 4.TOLERANCE: ±0.015 [0.381]

COMPRESSION INSERT TREE

- 1.MATERIAL: THERMOPLASTIC 94V-0
- 2.COLOR: BLACK
- 3.DUROMETER: 75 ±5 TYPE A PER ASTM D2240
- 4.DIMENSIONS: INCHES [MM]
- 5.TOLERANCE: ±0.020 [0.508]

THIS IS A CONTROLLED DOCUMENT AND IS SUBJECT TO CHANGE. CONTACT NORTHERN TECHNOLOGIES ENGINEERING FOR THE LATEST REVISION.

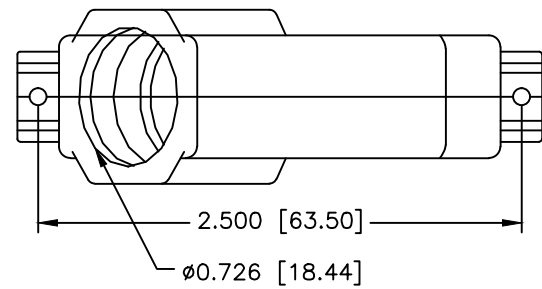
UNLESS OTHERWISE SPECIFIED

1. ALL DIMENSIONS ARE IN INCHES (MM)
2. DIMENSIONS ARE TYPICAL

Northern Technologies

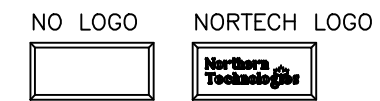
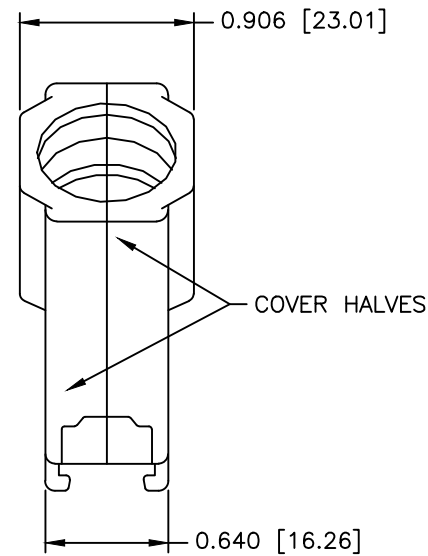
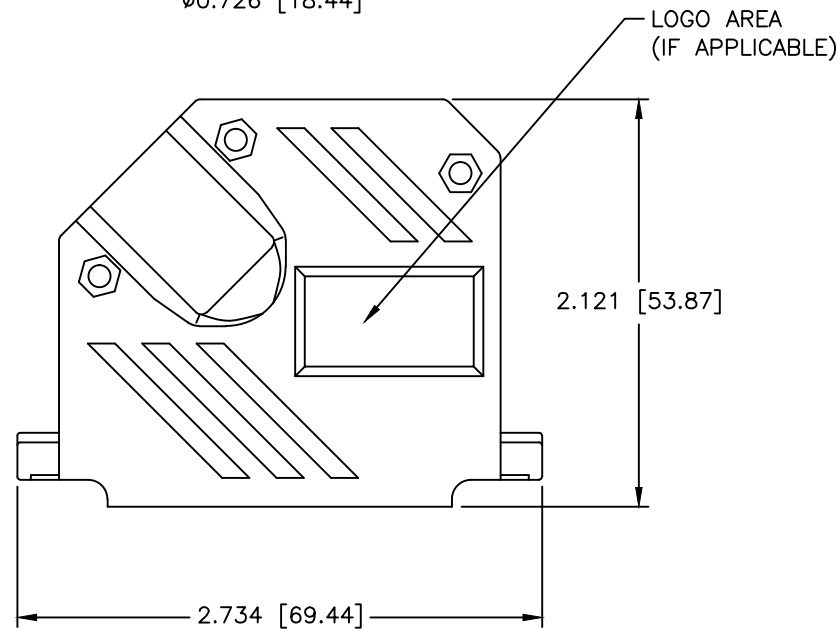
THIS DRAWING IS THE PROPERTY OF NORTHERN TECHNOLOGIES AND SHOULD NOT BE REPRODUCED WITHOUT NORTHERN TECHNOLOGIES WRITTEN PERMISSION.

DRAWN JSD		01-JUL-05		PART NUMBER SEE PART NUMBER INFORMATION	
CHECKED SCN		01-JUL-05		DESCRIPTION CMP 25 45 DEGREE EXIT TWO PIECE METALIZED PLASTIC COVER FR	
ISSUED		01-JUL-05		SIZE B	CODE 200_172
				DWG NO. 0002-200-172	REV C
		SCALE 1:1		SHEET 1 OF 1	



THIS PRODUCT IS DISCONTINUED

REVISIONS				
ZONE	REV	DESCRIPTION	DATE	APPROVED
	A	ECN 0579	06-OCT-05	
	B	ECN 0603	10-AUG-06	
	C	ECN 0846	19-FEB-24	



PART NUMBER INFORMATION

PART#	LOGO STYLE	SUPPLIED
F30E230000	NO LOGO	BULK
F88E230000	NO LOGO	PACKAGED
F30E231000	NORTECH LOGO*	BULK
F88E231000	NORTECH LOGO*	PACKAGED

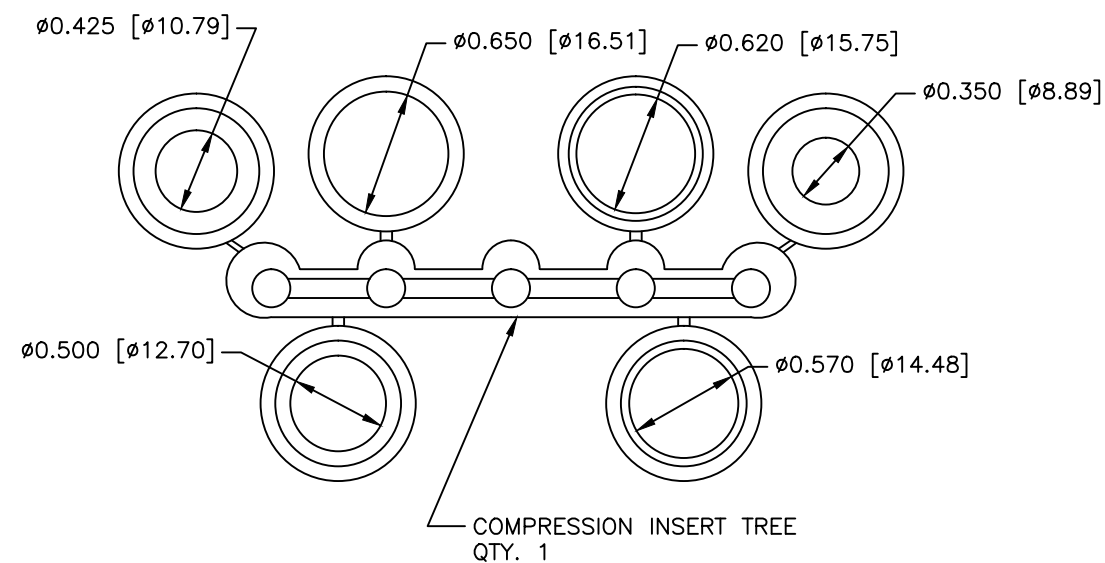
* - SPECIAL ORDER ITEM - CONTACT NORTHERN TECHNOLOGIES

CONNECTOR COVER:

- 1.MATERIAL: ABS COMPOUND UL94V-0
- 2.FINISH: NICKEL PLATING PER NTC SPECIFICATION N/T 000500
- 3.DIMENSIONS: INCHES [MM]
- 4.TOLERANCE: ±0.015 [0.381]

COMPRESSION INSERT TREE

- 1.MATERIAL: THERMOPLASTIC 94V-0
- 2.COLOR: BLACK
- 3.DUROMETER: 75 ±5 TYPE A PER ASTM D2240
- 4.DIMENSIONS: INCHES [MM]
- 5.TOLERANCE: ±0.020 [0.508]

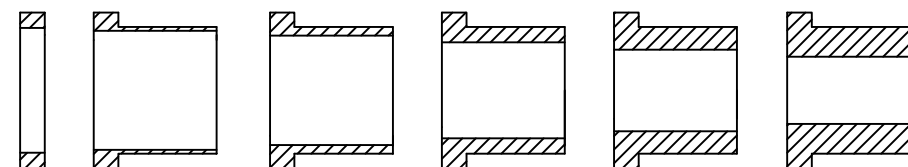


#4-40 X 7/16" FILLISTER HEAD MACHINE SCREW
MATERIAL - STEEL
FINISH - BRIGHT ZINC (HEXAVALENT CHROMIUM FREE)
QTY: 3 EACH

#4-40 #2 BLANK HEX NUT
MATERIAL - STEEL
FINISH - BRIGHT ZINC (HEXAVALENT CHROMIUM FREE)
QTY: 3 EACH

#4-40 X 1/2" FILLISTER HEAD CAPTIVE SCREW
MATERIAL - STEEL
FINISH - BRIGHT ZINC (HEXAVALENT CHROMIUM FREE)
QTY: 2 EACH

#4 SADDLE WASHER
MATERIAL - STEEL
FINISH - BRIGHT ZINC (HEXAVALENT CHROMIUM FREE)
QTY: 2 EACH



THIS IS A CONTROLLED DOCUMENT AND IS SUBJECT TO CHANGE. CONTACT NORTHERN TECHNOLOGIES ENGINEERING FOR THE LATEST REVISION.

UNLESS OTHERWISE SPECIFIED
1. ALL DIMENSIONS ARE IN INCHES (MM)
2. DIMENSIONS ARE TYPICAL

Northern Technologies

THIS DRAWING IS THE PROPERTY OF NORTHERN TECHNOLOGIES AND SHOULD NOT BE REPRODUCED WITHOUT NORTHERN TECHNOLOGIES WRITTEN PERMISSION.

DRAWN JSD		01-JUL-05		PART NUMBER SEE PART NUMBER INFORMATION	
CHECKED SCN		01-JUL-05		DESCRIPTION CMP 37 45 DEGREE EXIT TWO PIECE METALIZED PLASTIC COVER FR	
ISSUED		01-JUL-05		SIZE B	CODE 200_173
				DWG NO. 0002-200-173	REV C
		SCALE 1:1		SHEET 1 OF 1	