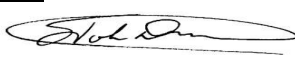






ENGINEERING CHANGE NOTICE

<p style="font-size: 1.2em; font-weight: bold;">Northern Technologies</p> <p><u>CLASS</u></p> <p><input type="checkbox"/> NEXT BUY</p> <p><input checked="" type="checkbox"/> NEXT PRODUCTION</p> <p><input checked="" type="checkbox"/> WORK IN PROCESS</p> <p><input checked="" type="checkbox"/> FINISHED GOODS</p> <p><input type="checkbox"/> RETURNS FROM FIELD</p> <p><input type="checkbox"/> UNITS IN FIELD</p> <p><input checked="" type="checkbox"/> UNITS IN STOCKROOM</p>	<u>ORIGINATOR</u>	<u>DATE</u>	<u>ECN</u>																						
	J. DiPietro		19-FEB-24	0845																					
	<u>PRODUCT TO BE CHANGED</u>		<u>EFFECTIVE DATE</u>																						
	CPP STR DEGREE GRAY FAMILY OF CONNECTOR COVER PRODUCTS		19-FEB-24																						
	<u>P/N</u> REFERENCE DESCRIPTION OF CHANGE																								
	<u>REASON FOR CHANGE</u>																								
	<p>Due to declining sales and increasing challenges in maintaining product conformance, certain product part numbers are now discontinued. The cost of materials and labor maintaining these products have increased to the point where they can no longer be sustained.</p> <p>Products will be available until current inventory is depleted. No future replacement is planned.</p>																								
<u>TYPE OF CHANGE</u>																									
<input checked="" type="checkbox"/> DOCUMENTATION <input checked="" type="checkbox"/> <u>SYSPRO / SYSTEM</u>																									
<u>REASON FOR CHANGE</u>																									
<input type="checkbox"/> DRAWING ERROR <input type="checkbox"/> FACILITATE MFG <input type="checkbox"/> MEET SPECS <input type="checkbox"/> PRODUCT IMPROVEMENT <input type="checkbox"/> VENDOR <input checked="" type="checkbox"/> <u>DISCONTINUED</u>																									
<u>DOCUMENTS REVISED</u>	<u>DESCRIPTION OF CHANGE</u>																								
<input checked="" type="checkbox"/> ASSEMBLY DRAWING <input checked="" type="checkbox"/> BILL OF MATERIALS <input checked="" type="checkbox"/> QA PROCEDURE <input checked="" type="checkbox"/> SCHEMATIC <input checked="" type="checkbox"/> FABRICATION DWG <input checked="" type="checkbox"/> TEST PROCEDURES <input type="checkbox"/> _____	<p>Mark as DISCONTINUED for areas related to color Gray as follows:</p> <table style="width: 100%; border: none;"> <tr> <td>Update Drawing #</td> <td>Change to:</td> </tr> <tr> <td>0002-200-122RevC</td> <td>RevD</td> </tr> <tr> <td>0002-200-122TRevA</td> <td>RevB</td> </tr> <tr> <td>0002-200-123RevA</td> <td>RevB</td> </tr> <tr> <td>0002-200-123T</td> <td>RevA</td> </tr> <tr> <td>0002-200-124RevA</td> <td>RevB</td> </tr> <tr> <td>0002-200-124T</td> <td>RevA</td> </tr> <tr> <td>0002-200-125RevA</td> <td>RevB</td> </tr> <tr> <td>0002-200-125T</td> <td>RevA</td> </tr> <tr> <td>0002-200-126RevA</td> <td>RevB</td> </tr> <tr> <td>0002-200-126T</td> <td>RevA</td> </tr> </table> <p>This document contains 13 pages</p>			Update Drawing #	Change to:	0002-200-122RevC	RevD	0002-200-122TRevA	RevB	0002-200-123RevA	RevB	0002-200-123T	RevA	0002-200-124RevA	RevB	0002-200-124T	RevA	0002-200-125RevA	RevB	0002-200-125T	RevA	0002-200-126RevA	RevB	0002-200-126T	RevA
Update Drawing #	Change to:																								
0002-200-122RevC	RevD																								
0002-200-122TRevA	RevB																								
0002-200-123RevA	RevB																								
0002-200-123T	RevA																								
0002-200-124RevA	RevB																								
0002-200-124T	RevA																								
0002-200-125RevA	RevB																								
0002-200-125T	RevA																								
0002-200-126RevA	RevB																								
0002-200-126T	RevA																								
<u>ENCLOSURES</u>	<u>ENGINEERING</u>	<u>MATERIALS</u>																							
																									
	<u>PRODUCTION</u>	<u>PRODUCT MKTG</u>																							
																									
<u>COSTS</u>	<u>QUALITY ASSURANCE</u>	<u>TEST ENGINEERING</u>																							
TIME: HRS @ _____ = _____ MATERIALS _____ = _____ TOTAL = _____																									
	<u>VICE PRESIDENT</u>	<u>DESIGN</u>																							

Northern Technologies

Product Discontinuation Announcement

February 19, 2024

Due to declining sales and increasing challenges in maintaining product conformance, certain product part numbers are now discontinued.

The cost of materials and labor maintaining these products have increased to the point where they can no longer be sustained.

Discontinued Product Part Numbers

C88E300005, C88E3000051, C88E300005M25S, C88E300005M26S, C88E300005M3S, C88E300005PS, C88E300005T, C88E301005, C88E3010051, C88E301005M25S, C88E301005M26S, C88E301005M3S, C88E301005PS, C88E301005T, C88E310005, C88E310005T, C88E311005, C88E311005T, C88E320005, C88E320005T, C88E321005, C88E321005T, C88E330005, C88E330005T, C88E331005, C88E331005T, C88E340005, C88E340005T, C88E341005, C88E341005T, A30E300005, A30E3000051, A30E300005M25S, A30E300005M26S, A30E300005M3S, A30E300005PS, A30E301005, A30E3010051, A30E301005M25S, A30E301005M26S, A30E301005M3S, A30E301005PS, A30E310005, A30E311005, A30E320005, A30E321005, A30E330005, A30E331005, A30E340005, A30E341005

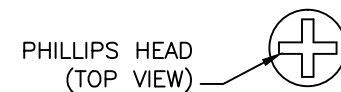
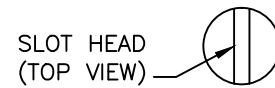
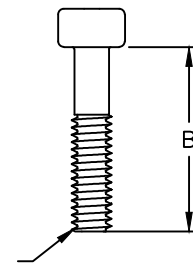
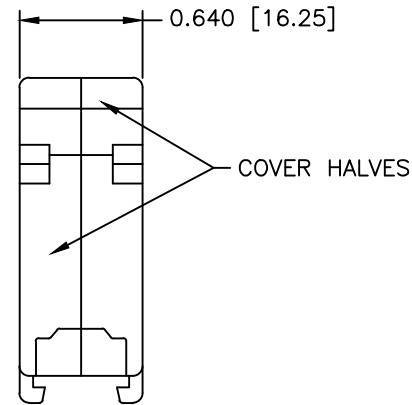
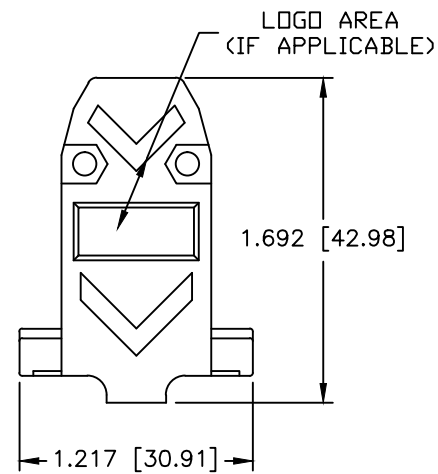
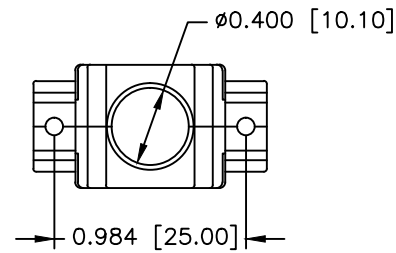
Replacement Product Part Numbers

Products will be available until current inventory is depleted.

No future replacement is planned.

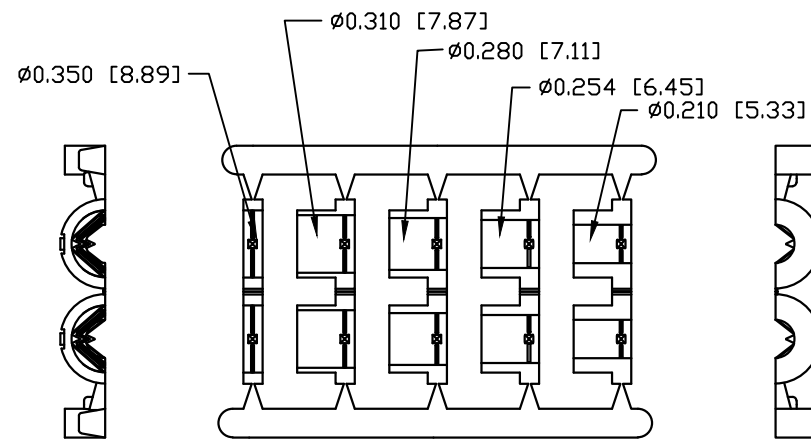
REF: ECN0845

For further information please contact:
sales@northerntech.com (1-800-456-1875)



FILLISTER HEAD CAPTIVE SCREW

THREAD (A)	LENGTH (B)	HEAD STYLE	MATERIAL	PLATING
#4-40 UNC	1/2 INCH	SLOT	COLD ROLL STEEL	ZINC
#4-40 UNC	7/16 INCH	SLOT	COLD ROLL STEEL	ZINC
M2.5 X .45MM	12.7 MM	SLOT	LOW CARBON STEEL	ZINC
M2.6 X .45MM	12.7 MM	SLOT	LOW CARBON STEEL	ZINC
M3 X .5MM	12.7 MM	SLOT	LOW CARBON STEEL	ZINC
#4-40 UNC	1/2 INCH	PHILLIPS	LOW CARBON STEEL	ZINC



JACKET INSERT TREE
QTY: 1



#4-40 X 7/16" FILLISTER HEAD MACHINE SCREW
MATERIAL - STEEL
FINISH - BRIGHT ZINC
QTY: 2 EACH



#4-40 #2 BLANK HEX NUT
MATERIAL - STEEL
FINISH - BRIGHT ZINC
QTY: 2 EACH



#4-40 X 1/2" FILLISTER HEAD CAPTIVE SCREW
MATERIAL - STEEL
FINISH - BRIGHT ZINC
QTY: 2 EACH



#4 SADDLE WASHER
MATERIAL - STEEL
FINISH - BRIGHT ZINC
QTY: 2 EACH

CONNECTOR COVER:

- 1.MATERIAL: THERMOPLASTIC UL94V-0
- 2.COLOR: BLACK
- 3.DIMENSIONS: INCHES [MM]
- 4.TOLERANCE: ±0.015 [0.381]

JACKET INSERT TREE

- 1.MATERIAL: POLYPROPYLENE HOMOPOLYMER
- 2.COLOR: BLACK
- 3.DIMENSIONS: INCHES [MM]
- 4.TOLERANCE: ±0.010 [0.254]

REVISIONS				
ZONE	REV	DESCRIPTION	DATE	APPROVED
	A	ECN 0607	10-AUG-06	
	B	ECN 0758	19-NOV-14	
	C	ECN 0817	27-SEP-20	
	D	ECN 0845	19-FEB-24	

UNLESS OTHERWISE SPECIFIED 1. ALL DIMENSIONS ARE IN INCHES (MM) 2. DIMENSIONS ARE TYPICAL		Northern Technologies			THIS DRAWING IS THE PROPERTY OF NORTHERN TECHNOLOGIES AND SHOULD NOT BE REPRODUCED WITHOUT NORTHERN TECHNOLOGIES WRITTEN PERMISSION.	
DRAWN JSD		27-APR-05		PART NUMBER SEE PART NUMBER INFORMATION		
CHECKED SCN		27-APR-05		DESCRIPTION CPP 09 STR EXIT TWO PIECE PLASTIC COVER		
ISSUED		01-SEP-05		SIZE B	CODE 200_122	DWG NO. 0002-200-122
				SCALE 1:1	SHEET 1 OF 2	
					REV D	

BLACK - PART NUMBER ORDER INFORMATION		
PART#	WITH #4-40 X 1/2" MATING SCREWS (SLOT HEAD)	SUPPLIED
A30E300004	NO LOGO COVER TOP	BULK
A30E301004	NORTECH LOGO COVER TOP	BULK
A30E300104	COVER BOTTOM	BULK
C88E300004	NO LOGO	PACKAGED
C88E301004	NORTECH LOGO	PACKAGED
PART#	WITH #4-40 X 7/16" MATING SCREWS (SLOT HEAD)	SUPPLIED
A30E3000041	NO LOGO COVER TOP	BULK
A30E3010041	NORTECH LOGO COVER TOP	BULK
A30E300104	COVER BOTTOM	BULK
C88E3000041	NO LOGO	PACKAGED
C88E3010041	NORTECH LOGO	PACKAGED
PART#	WITH M2.5 X 12.7MM MATING SCREWS (SLOT HEAD)	SUPPLIED
A30E300004M25S	NO LOGO COVER TOP	BULK
A30E301004M25S	NORTECH LOGO COVER TOP	BULK
A30E300104	COVER BOTTOM	BULK
C88E300004M25S	NO LOGO	PACKAGED
C88E301004M25S	NORTECH LOGO	PACKAGED
PART#	WITH M2.6 X 12.7MM MATING SCREWS (SLOT HEAD)	SUPPLIED
A30E300004M26S	NO LOGO COVER TOP	BULK
A30E301004M26S	NORTECH LOGO COVER TOP	BULK
A30E300104	COVER BOTTOM	BULK
C88E300004M26S	NO LOGO	PACKAGED
C88E301004M26S	NORTECH LOGO	PACKAGED
PART#	WITH M3 X 12.7MM MATING SCREWS (SLOT HEAD)	SUPPLIED
A30E300004M3S	NO LOGO COVER TOP	BULK
A30E301004M3S	NORTECH LOGO COVER TOP	BULK
A30E300104	COVER BOTTOM	BULK
C88E300004M3S	NO LOGO	PACKAGED
C88E301004M3S	NORTECH LOGO	PACKAGED
PART#	WITH #4-40 X 1/2" MATING SCREWS (PHILLIPS HEAD)	SUPPLIED
A30E300004PS	NO LOGO COVER TOP	BULK
A30E301004PS	NORTECH LOGO COVER TOP	BULK
A30E300104	COVER BOTTOM	BULK
C88E300004PS	NO LOGO	PACKAGED
C88E301004PS	NORTECH LOGO	PACKAGED

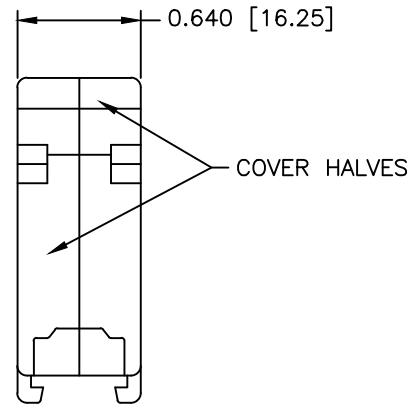
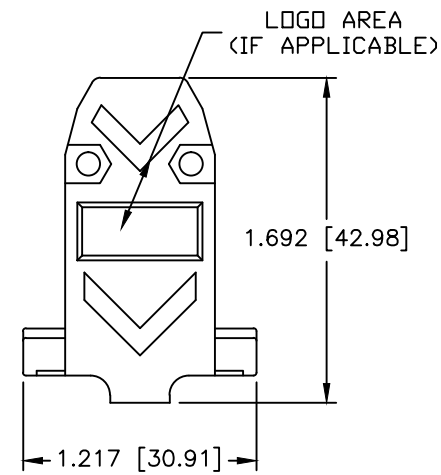
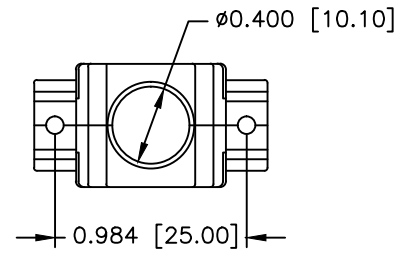
GRAY - THESE PARTS ARE DISCONTINUED		
PART#	WITH #4-40 X 1/2" MATING SCREWS (SLOT HEAD)	SUPPLIED
A30E300005	NO LOGO COVER TOP	BULK
A30E301005	NORTECH LOGO COVER TOP	BULK
A30E300105	COVER BOTTOM	BULK
C88E300005	NO LOGO	PACKAGED
C88E301005	NORTECH LOGO	PACKAGED
PART#	WITH #4-40 X 7/16" MATING SCREWS (SLOT HEAD)	SUPPLIED
A30E3000051	NO LOGO COVER TOP	BULK
A30E3010051	NORTECH LOGO COVER TOP	BULK
A30E300105	COVER BOTTOM	BULK
C88E3000051	NO LOGO	PACKAGED
C88E3010051	NORTECH LOGO	PACKAGED
PART#	WITH M2.5 X 12.7MM MATING SCREWS (SLOT HEAD)	SUPPLIED
A30E300005M25S	NO LOGO COVER TOP	BULK
A30E301005M25S	NORTECH LOGO COVER TOP	BULK
A30E300105	COVER BOTTOM	BULK
C88E300005M25S	NO LOGO	PACKAGED
C88E301005M25S	NORTECH LOGO	PACKAGED
PART#	WITH M2.6 X 12.7MM MATING SCREWS (SLOT HEAD)	SUPPLIED
A30E300005M26S	NO LOGO COVER TOP	BULK
A30E301005M26S	NORTECH LOGO COVER TOP	BULK
A30E300105	COVER BOTTOM	BULK
C88E300005M26S	NO LOGO	PACKAGED
C88E301005M26S	NORTECH LOGO	PACKAGED
PART#	WITH M3 X 12.7MM MATING SCREWS (SLOT HEAD)	SUPPLIED
A30E300005M3S	NO LOGO COVER TOP	BULK
A30E301005M3S	NORTECH LOGO COVER TOP	BULK
A30E300105	COVER BOTTOM	BULK
C88E300005M3S	NO LOGO	PACKAGED
C88E301005M3S	NORTECH LOGO	PACKAGED
PART#	WITH #4-40 X 1/2" MATING SCREWS (PHILLIPS HEAD)	SUPPLIED
A30E300005PS	NO LOGO COVER TOP	BULK
A30E301005PS	NORTECH LOGO COVER TOP	BULK
A30E300105	COVER BOTTOM	BULK
C88E300005PS	NO LOGO	PACKAGED
C88E301005PS	NORTECH LOGO	PACKAGED

THESE
PART
NUMBERS
ARE
DISCONTINUED



Northern Technologies		THIS DRAWING IS THE PROPERTY OF NORTHERN TECHNOLOGIES AND SHOULD NOT BE REPRODUCED WITHOUT NORTHERN TECHNOLOGIES WRITTEN PERMISSION.	
		PART NUMBER SEE PART NUMBER INFORMATION DESCRIPTION CPP 09 STR EXIT TWO PIECE PLASTIC COVER	
SIZE	CODE	DWG NO.	REV
B	200_122	0002-200-122	D
SCALE 1:1		SHEET 2 OF 2	

REVISIONS				
ZONE	REV	DESCRIPTION	DATE	APPROVED
	A	ECN 0758	19-NOV-14	
	B	ECN 0845	19-FEB-24	

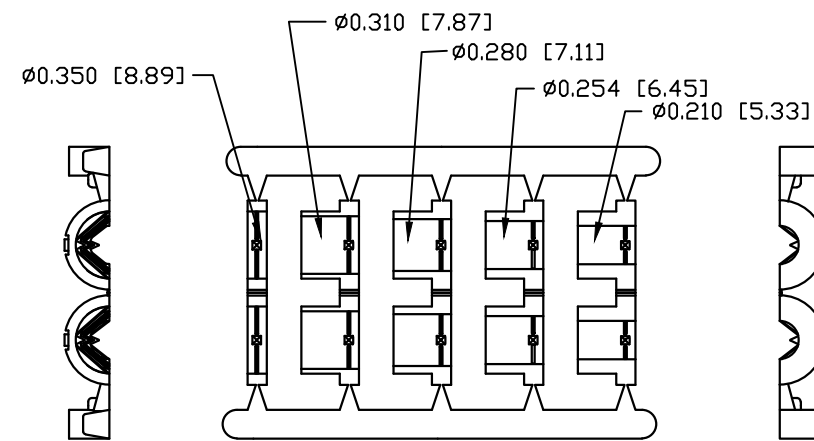


PART NUMBER INFORMATION
COLOR: BLACK


PART#	LOGO STYLE	SUPPLIED
C88E300004T	NO LOGO	PACKAGED
C88E301004T	NORTECH LOGO	PACKAGED


COLOR: GRAY- DISCONTINUED

PART#	LOGO STYLE	SUPPLIED
C88E300005T	NO LOGO	DISCONTINUED
C88E301005T	NORTECH LOGO	DISCONTINUED

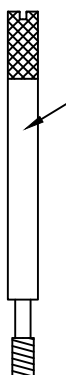


JACKET INSERT TREE
QTY: 1

 #4-40 X 7/16" FILLISTER HEAD MACHINE SCREW
MATERIAL - STEEL
FINISH - BRIGHT ZINC (HEXAVALENT CHROMIUM FREE)
QTY: 2 EACH

 #4-40 #2 BLANK HEX NUT
MATERIAL - STEEL
FINISH - BRIGHT ZINC (HEXAVALENT CHROMIUM FREE)
QTY: 2 EACH

 #4 SADDLE WASHER
MATERIAL - STEEL
FINISH - BRIGHT ZINC (HEXAVALENT CHROMIUM FREE)
QTY: 2 EACH

 #4-40 X 1.94 THUMBSCREW
MATERIAL - STEEL
FINISH - BRIGHT ZINC (HEXAVALENT CHROMIUM FREE)
QTY: 2 EACH

CONNECTOR COVER:

- 1.MATERIAL: THERMOPLASTIC UL94V-0
- 2.COLOR: BLACK
- 3.DIMENSIONS: INCHES [MM]
- 4.TOLERANCE: ±0.015 [0.381]

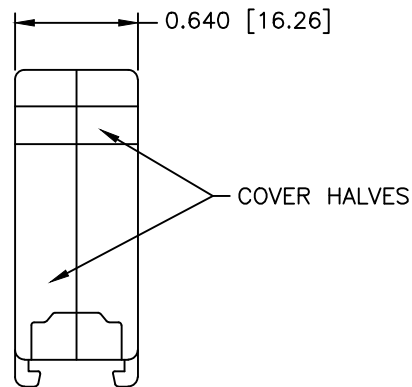
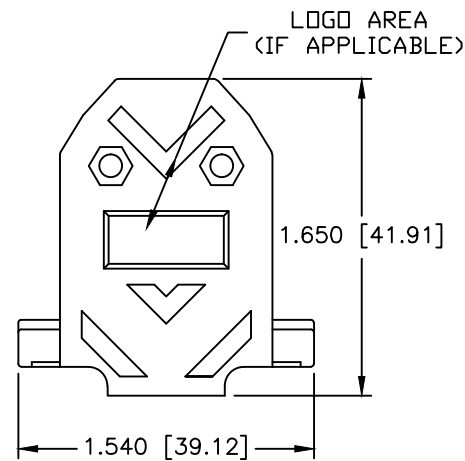
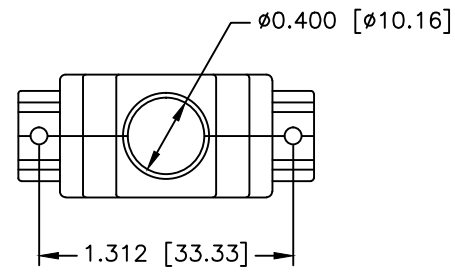
JACKET INSERT TREE

- 1.MATERIAL: POLYPROPYLENE HOMOPOLYMER
- 2.COLOR: BLACK
- 3.DIMENSIONS: INCHES [MM]
- 4.TOLERANCE: ±0.010 [0.254]

THIS IS A CONTROLLED DOCUMENT AND IS SUBJECT TO CHANGE. CONTACT NORTHERN TECHNOLOGIES ENGINEERING FOR THE LATEST REVISION.

UNLESS OTHERWISE SPECIFIED 1. ALL DIMENSIONS ARE IN INCHES (MM) 2. DIMENSIONS ARE TYPICAL		Northern Technologies <small>THIS DRAWING IS THE PROPERTY OF NORTHERN TECHNOLOGIES AND SHOULD NOT BE REPRODUCED WITHOUT NORTHERN TECHNOLOGIES WRITTEN PERMISSION.</small>		
DRAWN JSD 24-JAN-07		PART NUMBER SEE PART NUMBER INFORMATION		
CHECKED SCN 24-JAN-07		DESCRIPTION CPP 09 STR EXIT TWO PIECE PLASTIC COVER WITH THUMBSCREWS		
ISSUED 24-JAN-07		SIZE B	CODE 200_122T	REV B
SCALE 1:1		DWG NO. 0002-200-122T		SHEET 1 OF 1

REVISIONS				
ZONE	REV	DESCRIPTION	DATE	APPROVED
	A	ECN 0607	10-AUG-06	
	B	ECN 0845	19-FEB-24	



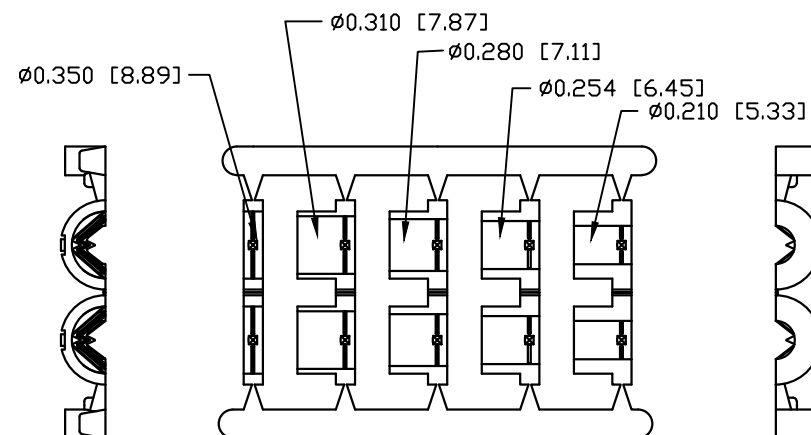
PART NUMBER INFORMATION

COLOR: BLACK

PART#	LOGO STYLE	SUPPLIED
A30E310004	NO LOGO	BULK
C88E310004	NO LOGO	PACKAGED
A30E311004	NORTECH LOGO	BULK
C88E311004	NORTECH LOGO	PACKAGED

COLOR: GRAY – DISCONTINUED

PART#	LOGO STYLE	SUPPLIED
A30E310005	NO LOGO	DISCONTINUED
C88E310005	NO LOGO	DISCONTINUED
A30E311005	NORTECH LOGO	DISCONTINUED
C88E311005	NORTECH LOGO	DISCONTINUED



JACKET INSERT TREE
QTY: 1

#4-40 X 7/16" FILLISTER HEAD MACHINE SCREW
MATERIAL – STEEL
FINISH – BRIGHT ZINC (HEXAVALENT CHROMIUM FREE)
QTY: 2 EACH

#4-40 #2 BLANK HEX NUT
MATERIAL – STEEL
FINISH – BRIGHT ZINC (HEXAVALENT CHROMIUM FREE)
QTY: 2 EACH

#4-40 X 1/2" FILLISTER HEAD CAPTIVE SCREW
MATERIAL – STEEL
FINISH – BRIGHT ZINC (HEXAVALENT CHROMIUM FREE)
QTY: 2 EACH

#4 SADDLE WASHER
MATERIAL – STEEL
FINISH – BRIGHT ZINC (HEXAVALENT CHROMIUM FREE)
QTY: 2 EACH

CONNECTOR COVER:

- 1.MATERIAL: THERMOPLASTIC UL94V-0
- 2.COLOR: BLACK
- 3.DIMENSIONS: INCHES [MM]
- 4.TOLERANCE: ±0.015 [0.381]

JACKET INSERT TREE

- 1.MATERIAL: POLYPROPYLENE HOMOPOLYMER
- 2.COLOR: BLACK
- 3.DIMENSIONS: INCHES [MM]
- 4.TOLERANCE: ±0.010 [0.254]

THIS IS A CONTROLLED DOCUMENT AND IS SUBJECT TO CHANGE. CONTACT NORTHERN TECHNOLOGIES ENGINEERING FOR THE LATEST REVISION.

UNLESS OTHERWISE SPECIFIED

1. ALL DIMENSIONS ARE IN INCHES (MM)
2. DIMENSIONS ARE TYPICAL

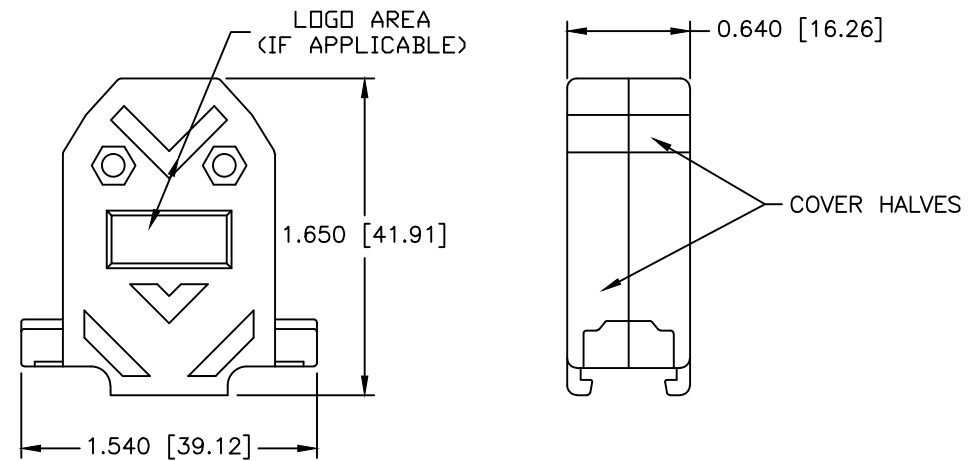
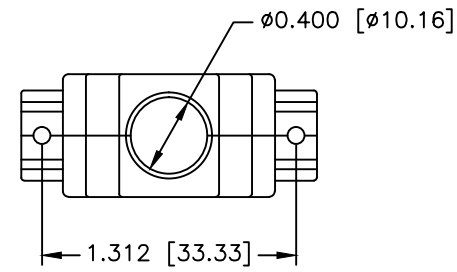
Northern Technologies

THIS DRAWING IS THE PROPERTY OF NORTHERN TECHNOLOGIES AND SHOULD NOT BE REPRODUCED WITHOUT NORTHERN TECHNOLOGIES WRITTEN PERMISSION.

PART NUMBER SEE PART NUMBER INFORMATION
DESCRIPTION CPP 15 STR EXIT TWO PIECE PLASTIC COVER

DRAWN JSD	27-APR-05	SIZE B	CODE 200_123	DWG NO. 0002-200-123	REV B
CHECKED SCN	27-APR-05	SCALE 1:1		SHEET 1 OF 1	
ISSUED	01-SEP-05				

REVISIONS				
ZONE	REV	DESCRIPTION	DATE	APPROVED
	A	ECN 0845	19-FEB-24	



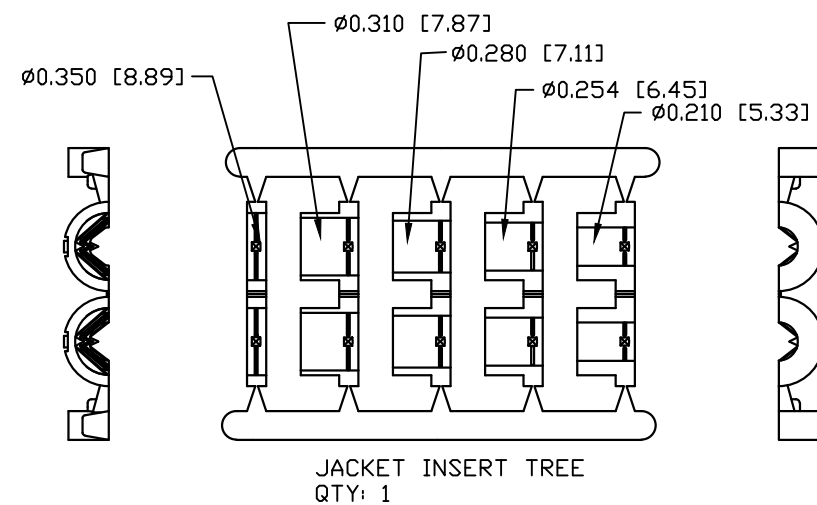
PART NUMBER INFORMATION

COLOR: BLACK

PART#	LOGO STYLE	SUPPLIED
C88E310004T	NO LOGO	PACKAGED
C88E311004T	NORTECH LOGO	PACKAGED

COLOR: GRAY - DISCONTINUED

PART#	LOGO STYLE	SUPPLIED
C88E310005T	NO LOGO	DISCONTINUED
C88E311005T	NORTECH LOGO	DISCONTINUED



#4-40 X 7/16" FILLISTER HEAD MACHINE SCREW
MATERIAL - STEEL
FINISH - BRIGHT ZINC (HEXAVALENT CHROMIUM FREE)
QTY: 2 EACH

#4-40 #2 BLANK HEX NUT
MATERIAL - STEEL
FINISH - BRIGHT ZINC (HEXAVALENT CHROMIUM FREE)
QTY: 2 EACH

#4 SADDLE WASHER
MATERIAL - STEEL
FINISH - BRIGHT ZINC (HEXAVALENT CHROMIUM FREE)
QTY: 2 EACH

#4-40 X 1.94 THUMBSCREW
MATERIAL - STEEL
FINISH - BRIGHT ZINC (HEXAVALENT CHROMIUM FREE)
QTY: 2 EACH

CONNECTOR COVER:

- 1.MATERIAL: THERMOPLASTIC UL94V-0
- 2.COLOR: BLACK
- 3.DIMENSIONS: INCHES [MM]
- 4.TOLERANCE: ±0.015 [0.381]

JACKET INSERT TREE

- 1.MATERIAL: POLYPROPYLENE HOMOPOLYMER
- 2.COLOR: BLACK
- 3.DIMENSIONS: INCHES [MM]
- 4.TOLERANCE: ±0.010 [0.254]

THIS IS A CONTROLLED DOCUMENT AND IS SUBJECT TO CHANGE. CONTACT NORTHERN TECHNOLOGIES ENGINEERING FOR THE LATEST REVISION.

UNLESS OTHERWISE SPECIFIED

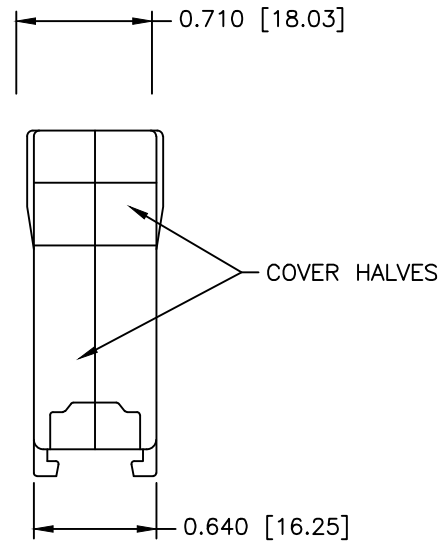
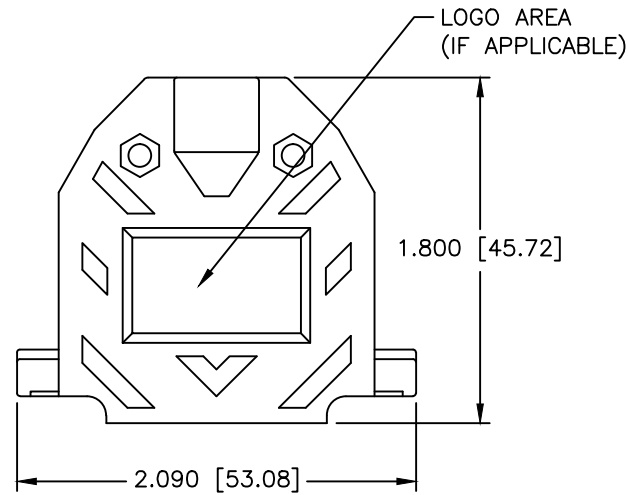
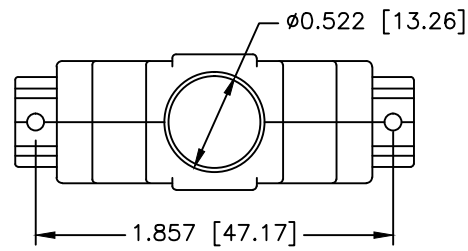
1. ALL DIMENSIONS ARE IN INCHES (MM)
2. DIMENSIONS ARE TYPICAL

Northern Technologies

THIS DRAWING IS THE PROPERTY OF NORTHERN TECHNOLOGIES AND SHOULD NOT BE REPRODUCED WITHOUT NORTHERN TECHNOLOGIES WRITTEN PERMISSION.

DRAWN JSD	24-JAN-07
CHECKED SCN	24-JAN-07
ISSUED	24-JAN-07

PART NUMBER SEE PART NUMBER INFORMATION				
DESCRIPTION CPP 15 STR EXIT TWO PIECE PLASTIC COVER WITH THUMBSCREWS				
SIZE B	CODE 200_123T	DWG NO. 0002-200-123T	REV A	
SCALE 1:1		SHEET 1 OF 1		



REVISIONS				
ZONE	REV	DESCRIPTION	DATE	APPROVED
	A	ECN 0607	10-AUG-06	
	B	ECN 0845	19-FEB-24	

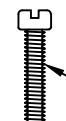



PART NUMBER INFORMATION
COLOR: BLACK

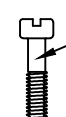
PART#	LOGO STYLE	SUPPLIED
A30E320004	NO LOGO	BULK
C88E320004	NO LOGO	PACKAGED
A30E321004	NORTECH LOGO	BULK
C88E321004	NORTECH LOGO	PACKAGED

COLOR: GRAY - DISCONTINUED

PART#	LOGO STYLE	SUPPLIED
A30E320005	NO LOGO	DISCONTINUED
C88E320005	NO LOGO	DISCONTINUED
A30E321005	NORTECH LOGO	DISCONTINUED
C88E321005	NORTECH LOGO	DISCONTINUED

 #4-40 X 7/16" FILLISTER HEAD MACHINE SCREW
MATERIAL - STEEL
FINISH - BRIGHT ZINC (HEXAVALENT CHROMIUM FREE)
QTY: 2 EACH

 #4-40 #2 BLANK HEX NUT
MATERIAL - STEEL
FINISH - BRIGHT ZINC (HEXAVALENT CHROMIUM FREE)
QTY: 2 EACH

 #4-40 X 1/2" FILLISTER HEAD CAPTIVE SCREW
MATERIAL - STEEL
FINISH - BRIGHT ZINC (HEXAVALENT CHROMIUM FREE)
QTY: 2 EACH

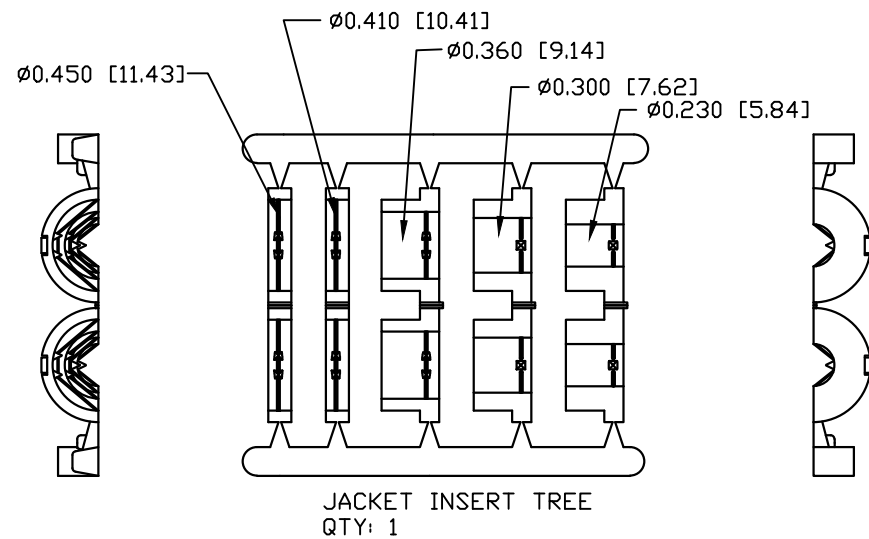
 #4 SADDLE WASHER
MATERIAL - STEEL
FINISH - BRIGHT ZINC (HEXAVALENT CHROMIUM FREE)
QTY: 2 EACH

CONNECTOR COVER:

- 1.MATERIAL: THERMOPLASTIC UL94V-0
- 2.COLOR: BLACK
- 3.DIMENSIONS: INCHES [MM]
- 4.TOLERANCE: ±0.015 [0.381]

JACKET INSERT TREE

- 1.MATERIAL: POLYPROPYLENE HOMOPOLYMER
- 2.COLOR: BLACK
- 3.DIMENSIONS: INCHES [MM]
- 4.TOLERANCE: ±0.010 [0.254]



THIS IS A CONTROLLED DOCUMENT AND IS SUBJECT TO CHANGE. CONTACT NORTHERN TECHNOLOGIES ENGINEERING FOR THE LATEST REVISION.

UNLESS OTHERWISE SPECIFIED

1. ALL DIMENSIONS ARE IN INCHES (MM)
2. DIMENSIONS ARE TYPICAL

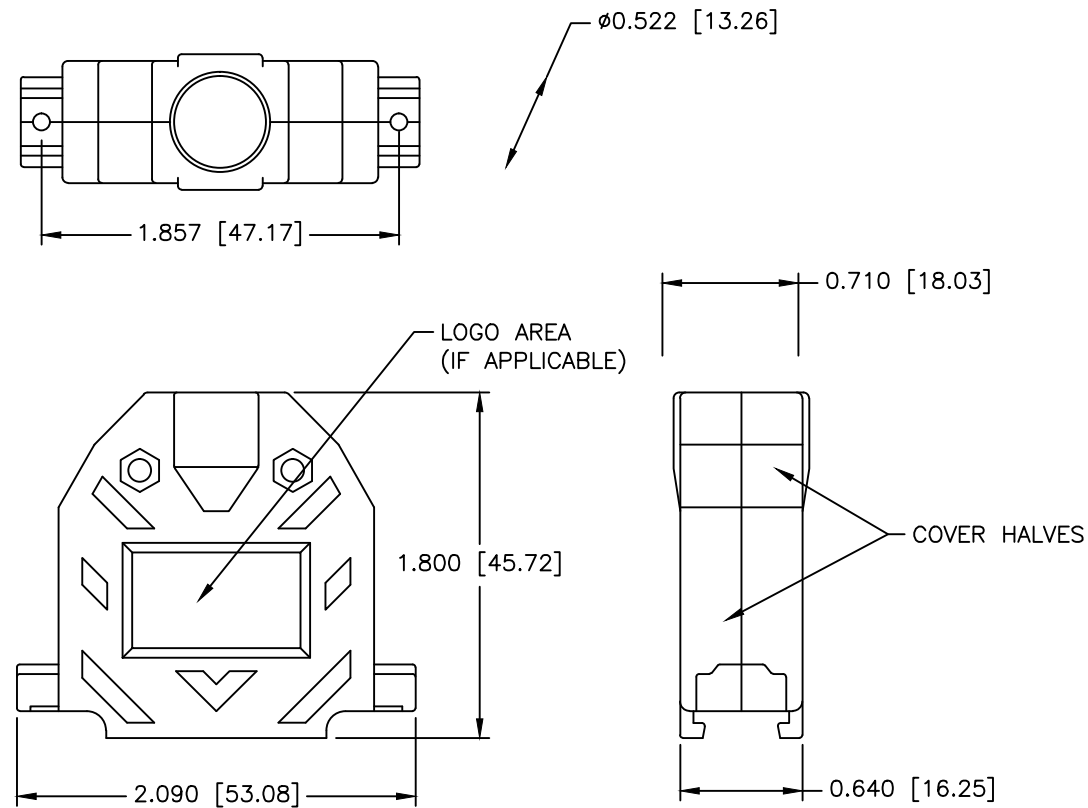
Northern Technologies

THIS DRAWING IS THE PROPERTY OF NORTHERN TECHNOLOGIES AND SHOULD NOT BE REPRODUCED WITHOUT NORTHERN TECHNOLOGIES WRITTEN PERMISSION.

PART NUMBER SEE PART NUMBER INFORMATION
DESCRIPTION CPP 25 STR EXIT TWO PIECE PLASTIC COVER

DRAWN JSD	27-APR-05	SIZE B	CODE 200_124	DWG NO. 0002-200-124	REV B
CHECKED SCN	27-APR-05	SCALE 1:1		SHEET 1 OF 1	
ISSUED	01-SEP-05				

REVISIONS				
ZONE	REV	DESCRIPTION	DATE	APPROVED
	A	ECN 0845	19-FEB-24	



PART NUMBER INFORMATION
COLOR: BLACK

PART#	LOGO STYLE	SUPPLIED
C88E320004T	NO LOGO	PACKAGED
C88E321004T	NORTECH LOGO	PACKAGED

COLOR: GRAY – DISCONTINUED

PART#	LOGO STYLE	SUPPLIED
C88E320005T	NO LOGO	DISCONTINUED
C88E321005T	NORTECH LOGO	DISCONTINUED

#4-40 X 7/16" FILLISTER HEAD MACHINE SCREW
MATERIAL – STEEL
FINISH – BRIGHT ZINC (HEXAVALENT CHROMIUM FREE)
QTY: 2 EACH

#4-40 #2 BLANK HEX NUT
MATERIAL – STEEL
FINISH – BRIGHT ZINC (HEXAVALENT CHROMIUM FREE)
QTY: 2 EACH

#4 SADDLE WASHER
MATERIAL – STEEL
FINISH – BRIGHT ZINC (HEXAVALENT CHROMIUM FREE)
QTY: 2 EACH

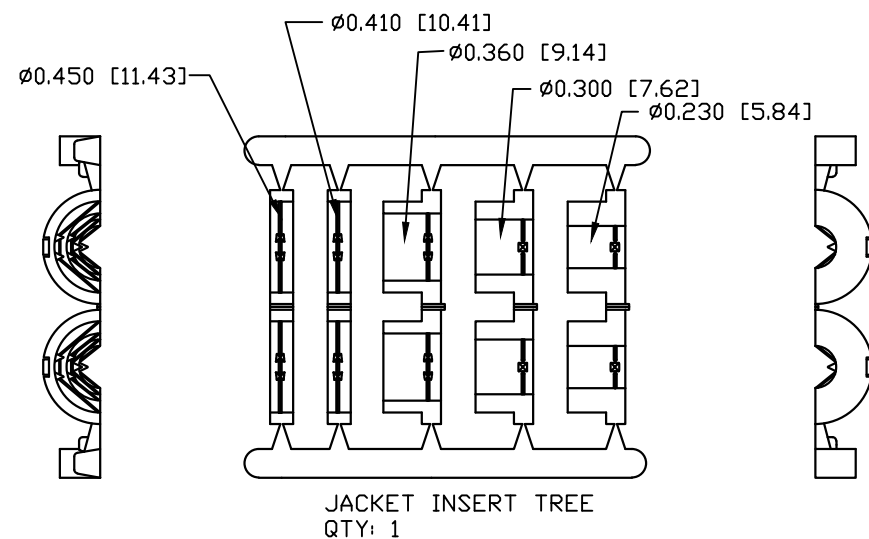
#4-40 X 1.94 THUMBSCREW
MATERIAL – STEEL
FINISH – BRIGHT ZINC (HEXAVALENT CHROMIUM FREE)
QTY: 2 EACH

CONNECTOR COVER:

- 1.MATERIAL: THERMOPLASTIC UL94V-0
2. COLOR: BLACK
- 3.DIMENSIONS: INCHES [MM]
- 4.TOLERANCE: ± 0.015 [0.381]

JACKET INSERT TREE

- 1.MATERIAL: POLYPROPYLENE HOMOPOLYMER
- 2.COLOR: BLACK
- 3.DIMENSIONS: INCHES [MM]
- 4.TOLERANCE: ± 0.010 [0.254]



THIS IS A CONTROLLED DOCUMENT AND IS SUBJECT TO CHANGE. CONTACT NORTHERN TECHNOLOGIES ENGINEERING FOR THE LATEST REVISION.

UNLESS OTHERWISE SPECIFIED

1. ALL DIMENSIONS ARE IN INCHES (MM)
2. DIMENSIONS ARE TYPICAL

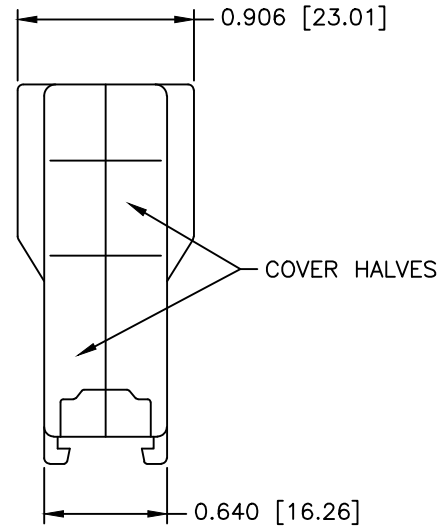
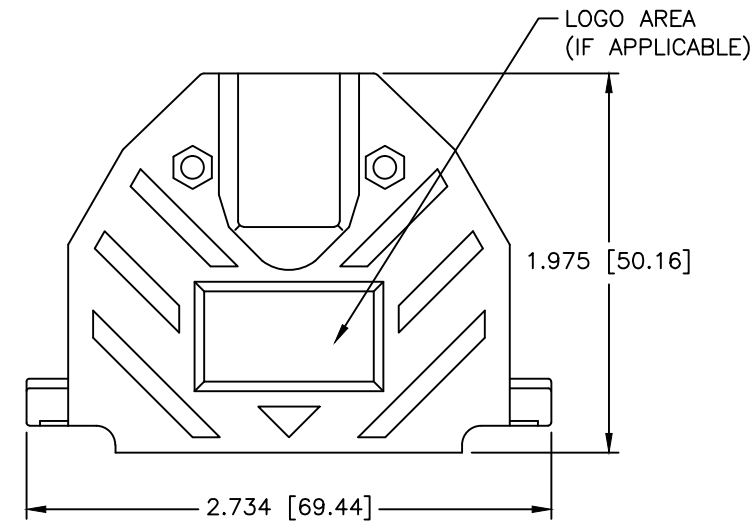
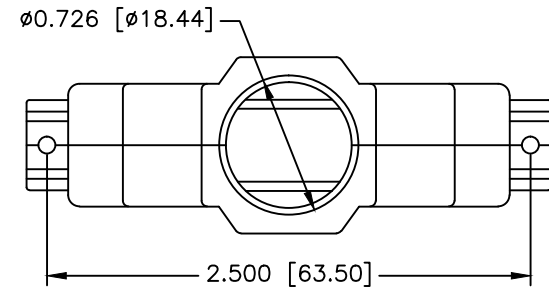
Northern Technologies

THIS DRAWING IS THE PROPERTY OF NORTHERN TECHNOLOGIES AND SHOULD NOT BE REPRODUCED WITHOUT NORTHERN TECHNOLOGIES WRITTEN PERMISSION.

PART NUMBER SEE PART NUMBER INFORMATION

DESCRIPTION CPP 25 STR EXIT TWO PIECE PLASTIC COVER WITH THUMBSCREWS

DRAWN JSD	24-JAN-07	SIZE B	CODE 200_124T	DWG NO. 0002-200-124T	REV A
CHECKED SCN	24-JAN-07	SCALE 1:1		SHEET 1 OF 1	
ISSUED	24-JAN-07				



PART NUMBER INFORMATION


COLOR: BLACK


PART#	LOGO STYLE	SUPPLIED
A30E330004	NO LOGO	BULK
C88E330004	NO LOGO	PACKAGED
A30E331004	NORTECH LOGO*	BULK
C88E331004	NORTECH LOGO*	PACKAGED


COLOR: GRAY – DISCONTINUED

PART#	LOGO STYLE	SUPPLIED
A30E330005	NO LOGO*	DISCONTINUED
C88E330005	NO LOGO*	DISCONTINUED
A30E331005	NORTECH LOGO	DISCONTINUED
C88E331005	NORTECH LOGO	DISCONTINUED

* - SPECIAL ORDER ITEM - CONTACT NORTHERN TECHNOLOGIES

 #4-40 X 7/16" FILLISTER HEAD MACHINE SCREW
MATERIAL - STEEL
FINISH - BRIGHT ZINC (HEXAVALENT CHROMIUM FREE)
QTY: 2 EACH

 #4-40 #2 BLANK HEX NUT
MATERIAL - STEEL
FINISH - BRIGHT ZINC (HEXAVALENT CHROMIUM FREE)
QTY: 2 EACH

 #4-40 X 1/2" FILLISTER HEAD CAPTIVE SCREW
MATERIAL - STEEL
FINISH - BRIGHT ZINC (HEXAVALENT CHROMIUM FREE)
QTY: 2 EACH

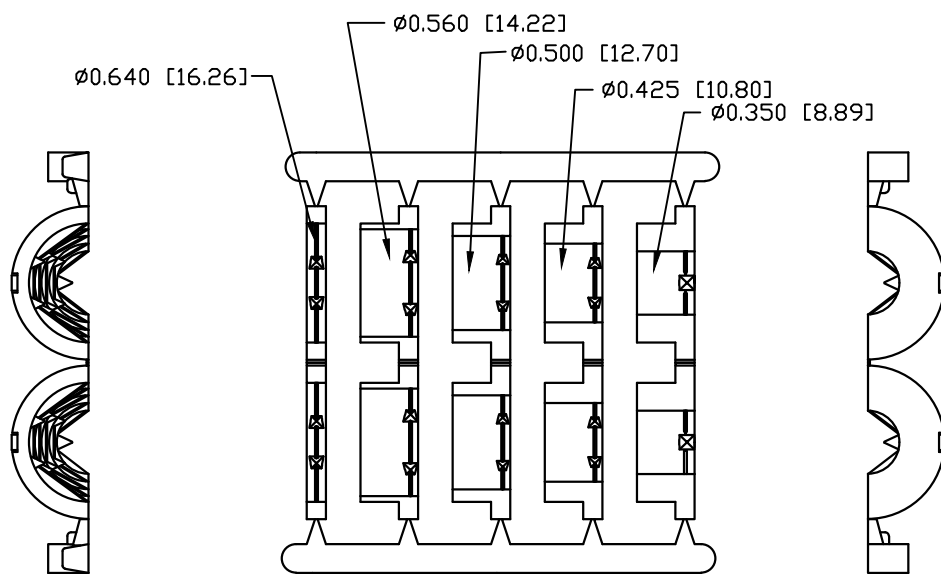
 #4 SADDLE WASHER
MATERIAL - STEEL
FINISH - BRIGHT ZINC (HEXAVALENT CHROMIUM FREE)
QTY: 2 EACH

CONNECTOR COVER:

- 1.MATERIAL: THERMOPLASTIC UL94V-0
- 2.COLOR: BLACK
- 3.DIMENSIONS: INCHES [MM]
- 4.TOLERANCE: ±0.015 [0.381]

JACKET INSERT TREE

- 1.MATERIAL: POLYPROPYLENE HOMOPOLYMER
- 2.COLOR: BLACK
- 3.DIMENSIONS: INCHES [MM]
- 4.TOLERANCE: ±0.010 [0.254]



JACKET INSERT TREE
QTY: 1

THIS IS A CONTROLLED DOCUMENT AND IS SUBJECT TO CHANGE. CONTACT NORTHERN TECHNOLOGIES ENGINEERING FOR THE LATEST REVISION.

UNLESS OTHERWISE SPECIFIED

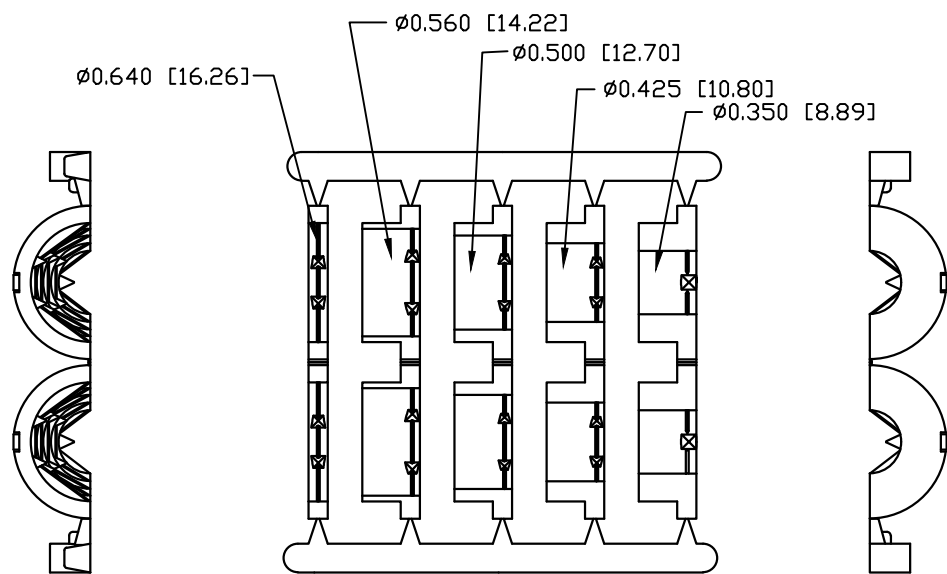
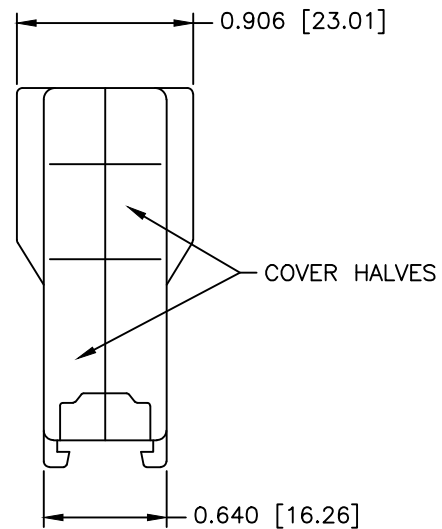
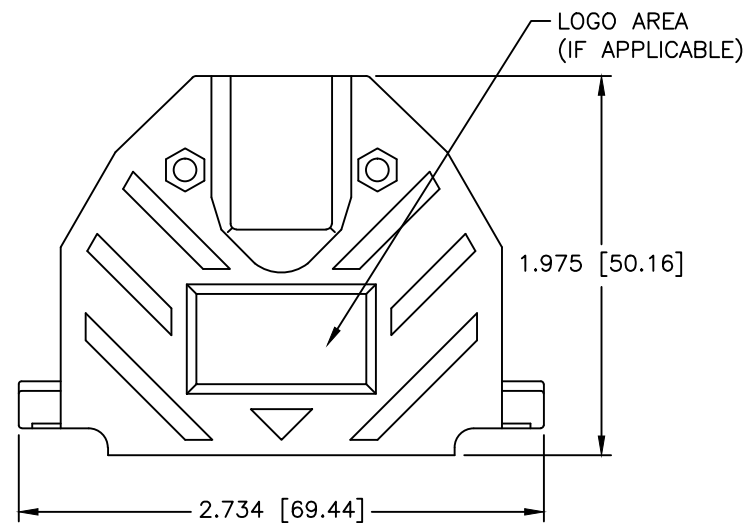
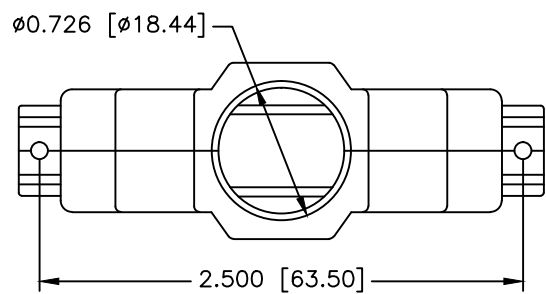
1. ALL DIMENSIONS ARE IN INCHES (MM)
2. DIMENSIONS ARE TYPICAL

Northern Technologies

THIS DRAWING IS THE PROPERTY OF NORTHERN TECHNOLOGIES AND SHOULD NOT BE REPRODUCED WITHOUT NORTHERN TECHNOLOGIES WRITTEN PERMISSION.

PART NUMBER SEE PART NUMBER INFORMATION
DESCRIPTION CPP 37 STR EXIT TWO PIECE PLASTIC COVER

DRAWN JSD	27-APR-05	SIZE B	CODE 200_125	DWG NO. 0002-200-125	REV B
CHECKED SCN	27-APR-05	SCALE 1:1		SHEET 1 OF 1	
ISSUED	01-SEP-05				



JACKET INSERT TREE
QTY: 1

REVISIONS				
ZONE	REV	DESCRIPTION	DATE	APPROVED
	A	ECN 0845	19-FEB-24	



PART NUMBER INFORMATION


COLOR: BLACK


PART#	LOGO STYLE	SUPPLIED
C88E330004T	NO LOGO	PACKAGED
C88E331004T	NORTECH LOGO*	PACKAGED

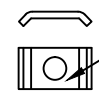
COLOR: GRAY - DISCONTINUED


PART#	LOGO STYLE	SUPPLIED
C88E330005T	NO LOGO*	DISCONTINUED
C88E331005T	NORTECH LOGO	DISCONTINUED

* - SPECIAL ORDER ITEM - CONTACT NORTHERN TECHNOLOGIES

 #4-40 X 7/16" FILLISTER HEAD MACHINE SCREW
MATERIAL - STEEL
FINISH - BRIGHT ZINC (HEXAVALENT CHROMIUM FREE)
QTY: 2 EACH

 #4-40 #2 BLANK HEX NUT
MATERIAL - STEEL
FINISH - BRIGHT ZINC (HEXAVALENT CHROMIUM FREE)
QTY: 2 EACH

 #4 SADDLE WASHER
MATERIAL - STEEL
FINISH - BRIGHT ZINC (HEXAVALENT CHROMIUM FREE)
QTY: 2 EACH

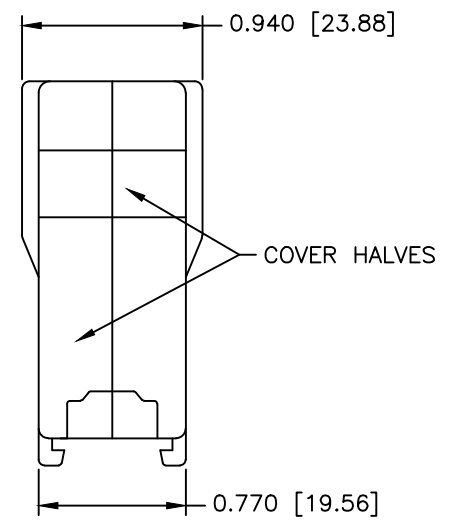
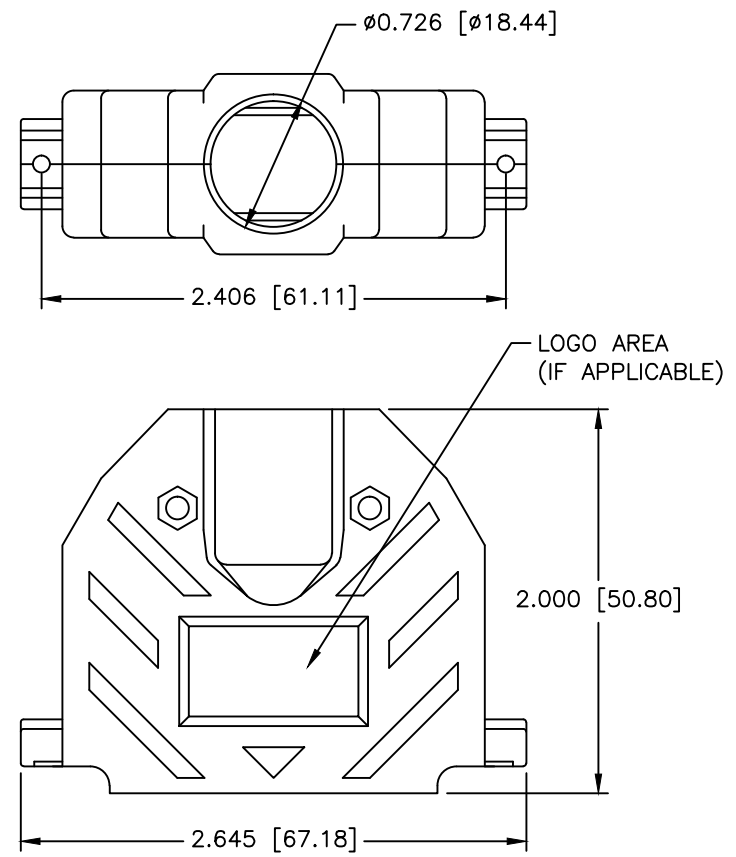
 #4-40 X 1.94 THUMBSCREW
MATERIAL - STEEL
FINISH - BRIGHT ZINC (HEXAVALENT CHROMIUM FREE)
QTY: 2 EACH

CONNECTOR COVER:
1. MATERIAL: THERMOPLASTIC UL94V-0
2. COLOR: BLACK
3. DIMENSIONS: INCHES [MM]
4. TOLERANCE: ±0.015 [0.381]

JACKET INSERT TREE
1. MATERIAL: POLYPROPYLENE HOMOPOLYMER
2. COLOR: BLACK
3. DIMENSIONS: INCHES [MM]
4. TOLERANCE: ±0.010 [0.254]

THIS IS A CONTROLLED DOCUMENT AND IS SUBJECT TO CHANGE. CONTACT NORTHERN TECHNOLOGIES ENGINEERING FOR THE LATEST REVISION.

UNLESS OTHERWISE SPECIFIED 1. ALL DIMENSIONS ARE IN INCHES (MM) 2. DIMENSIONS ARE TYPICAL		Northern Technologies <small>THIS DRAWING IS THE PROPERTY OF NORTHERN TECHNOLOGIES AND SHOULD NOT BE REPRODUCED WITHOUT NORTHERN TECHNOLOGIES WRITTEN PERMISSION.</small>		
DRAWN JSD 24-JAN-07		PART NUMBER SEE PART NUMBER INFORMATION		
CHECKED SCN 24-JAN-07		DESCRIPTION CPP 37 STR EXIT TWO PIECE PLASTIC COVER WITH THUMBSCREWS		
ISSUED 24-JAN-07		SIZE B	CODE 200_125T	REV A
SCALE 1:1		DWG NO. 0002-200-125T		SHEET 1 OF 1



REVISIONS				
ZONE	REV	DESCRIPTION	DATE	APPROVED
	A	ECN 0607	10-AUG-06	
	B	ECN 0845	19-FEB-24	



PART NUMBER INFORMATION
COLOR: BLACK

COLOR: GRAY - DISCONTINUED

PART#	LOGO STYLE	SUPPLIED
A30E340004	NO LOGO	BULK
C88E340004	NO LOGO	PACKAGED
A30E341004	NORTECH LOGO*	BULK
C88E341004	NORTECH LOGO*	PACKAGED

PART#	LOGO STYLE	SUPPLIED
A30E340005	NO LOGO	DISCONTINUED
C88E340005	NO LOGO	DISCONTINUED
A30E341005	NORTECH LOGO*	DISCONTINUED
C88E341005	NORTECH LOGO*	DISCONTINUED

* - SPECIAL ORDER ITEM - CONTACT NORTHERN TECHNOLOGIES

#4-40 X 7/16" FILLISTER HEAD MACHINE SCREW
MATERIAL - STEEL
FINISH - BRIGHT ZINC (HEXAVALENT CHROMIUM FREE)
QTY: 2 EACH

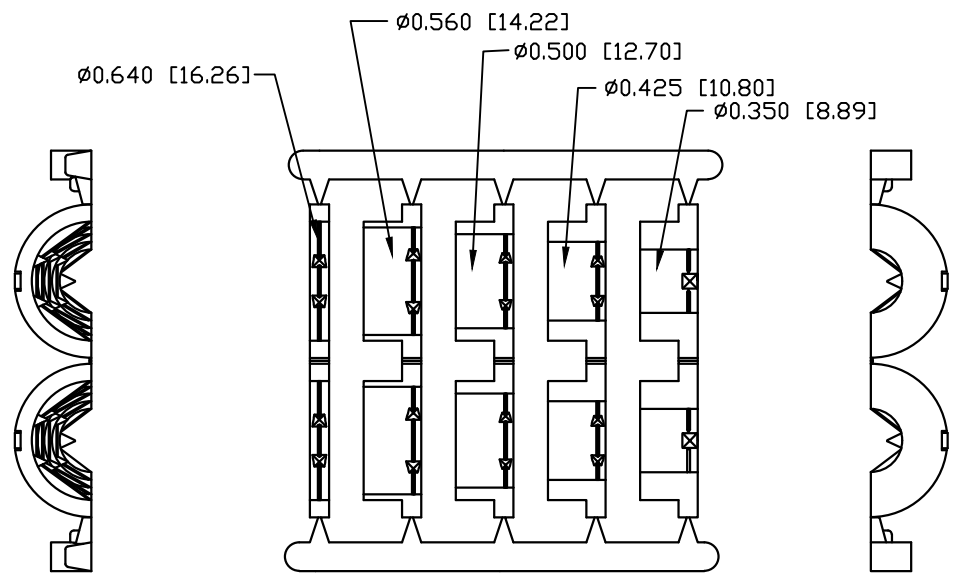
#4-40 #2 BLANK HEX NUT
MATERIAL - STEEL
FINISH - BRIGHT ZINC (HEXAVALENT CHROMIUM FREE)
QTY: 2 EACH

#4-40 X 1/2" FILLISTER HEAD CAPTIVE SCREW
MATERIAL - STEEL
FINISH - BRIGHT ZINC (HEXAVALENT CHROMIUM FREE)
QTY: 2 EACH

#4 SADDLE WASHER
MATERIAL - STEEL
FINISH - BRIGHT ZINC (HEXAVALENT CHROMIUM FREE)
QTY: 2 EACH

CONNECTOR COVER:
1. MATERIAL: THERMOPLASTIC UL94V-0
2. COLOR: BLACK
3. DIMENSIONS: INCHES [MM]
4. TOLERANCE: ±0.015 [0.381]

JACKET INSERT TREE
1. MATERIAL: POLYPROPYLENE HOMOPOLYMER
2. COLOR: BLACK
3. DIMENSIONS: INCHES [MM]
4. TOLERANCE: ±0.010 [0.254]

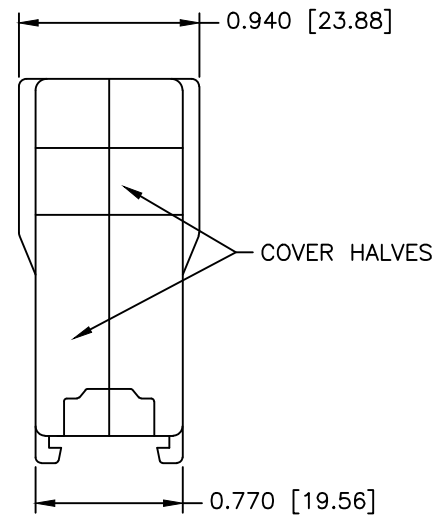
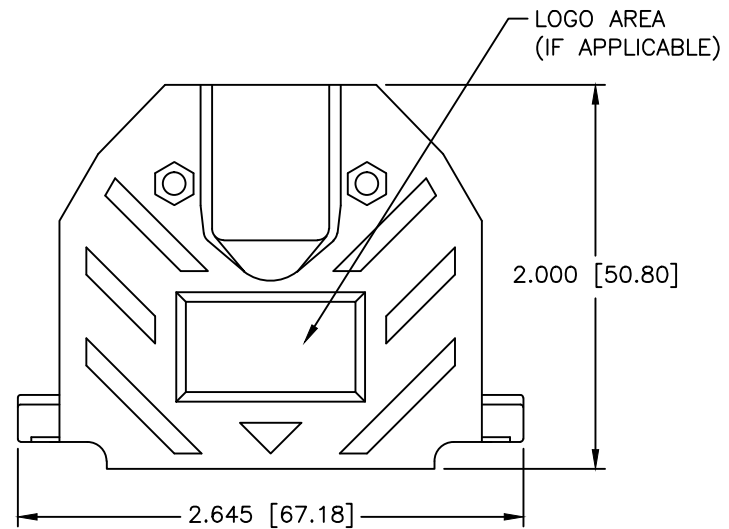
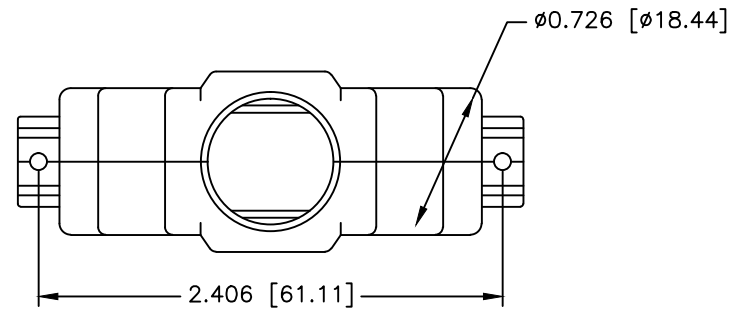


JACKET INSERT TREE
QTY: 1

THIS IS A CONTROLLED DOCUMENT AND IS SUBJECT TO CHANGE. CONTACT NORTHERN TECHNOLOGIES ENGINEERING FOR THE LATEST REVISION.

UNLESS OTHERWISE SPECIFIED 1. ALL DIMENSIONS ARE IN INCHES (MM) 2. DIMENSIONS ARE TYPICAL		Northern Technologies <small>THIS DRAWING IS THE PROPERTY OF NORTHERN TECHNOLOGIES AND SHOULD NOT BE REPRODUCED WITHOUT NORTHERN TECHNOLOGIES' WRITTEN PERMISSION.</small>		
DRAWN JSD 27-APR-05		PART NUMBER SEE PART NUMBER INFORMATION DESCRIPTION CPP 50 STR EXIT TWO PIECE PLASTIC COVER		
CHECKED SCN 27-APR-05	ISSUED 01-SEP-05	SIZE B	CODE 200_126	DWG NO. 0002-200-126
		SCALE 1:1	SHEET 1 OF 1	

REVISIONS				
ZONE	REV	DESCRIPTION	DATE	APPROVED
	A	ECN 0845	19-FEB-24	



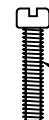
PART NUMBER INFORMATION
COLOR: BLACK


PART#	LOGO STYLE	SUPPLIED
C88E340004T	NO LOGO	PACKAGED
C88E341004T	NORTECH LOGO*	PACKAGED

COLOR: GRAY - DISCONTINUED

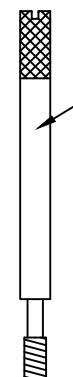
PART#	LOGO STYLE	SUPPLIED
C88E340005T	NO LOGO	DISCONTINUED
C88E341005T	NORTECH LOGO*	DISCONTINUED

* - SPECIAL ORDER ITEM - CONTACT NORTHERN TECHNOLOGIES

 #4-40 X 7/16" FILLISTER HEAD MACHINE SCREW
MATERIAL - STEEL
FINISH - BRIGHT ZINC (HEXAVALENT CHROMIUM FREE)
QTY: 2 EACH

 #4-40 #2 BLANK HEX NUT
MATERIAL - STEEL
FINISH - BRIGHT ZINC (HEXAVALENT CHROMIUM FREE)
QTY: 2 EACH

 #4 SADDLE WASHER
MATERIAL - STEEL
FINISH - BRIGHT ZINC (HEXAVALENT CHROMIUM FREE)
QTY: 2 EACH

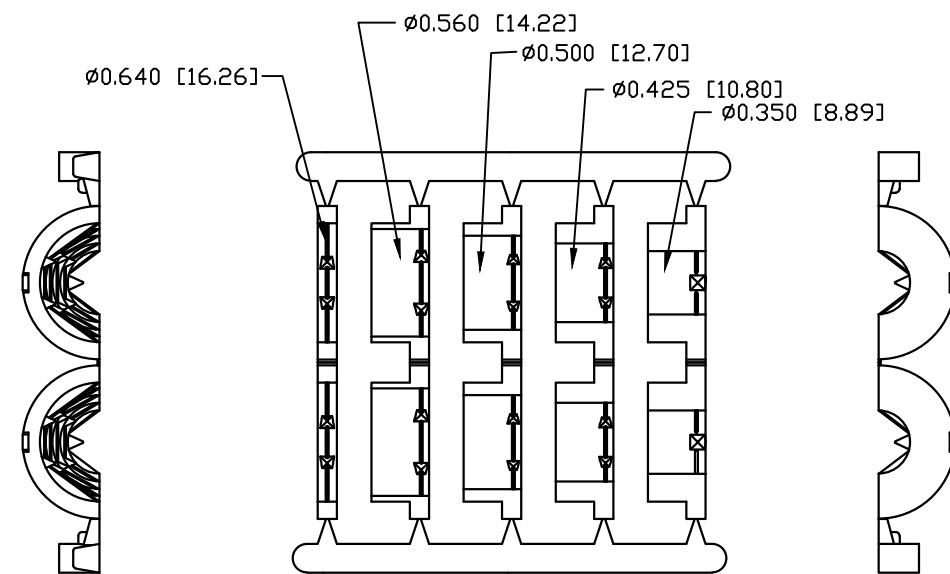
 #4-40 X 1.94 THUMBSCREW
MATERIAL - STEEL
FINISH - BRIGHT ZINC (HEXAVALENT CHROMIUM FREE)
QTY: 2 EACH

CONNECTOR COVER:

1. MATERIAL: THERMOPLASTIC UL94V-0
2. COLOR: BLACK
3. DIMENSIONS: INCHES [MM]
4. TOLERANCE: ±0.015 [0.381]

JACKET INSERT TREE

1. MATERIAL: POLYPROPYLENE HOMOPOLYMER
2. COLOR: BLACK
3. DIMENSIONS: INCHES [MM]
4. TOLERANCE: ±0.010 [0.254]



JACKET INSERT TREE
QTY: 1

THIS IS A CONTROLLED DOCUMENT AND IS SUBJECT TO CHANGE. CONTACT NORTHERN TECHNOLOGIES ENGINEERING FOR THE LATEST REVISION.

UNLESS OTHERWISE SPECIFIED 1. ALL DIMENSIONS ARE IN INCHES (MM) 2. DIMENSIONS ARE TYPICAL		Northern Technologies <small>THIS DRAWING IS THE PROPERTY OF NORTHERN TECHNOLOGIES AND SHOULD NOT BE REPRODUCED WITHOUT NORTHERN TECHNOLOGIES WRITTEN PERMISSION.</small>		
DRAWN JSD 24-JAN-07		PART NUMBER SEE PART NUMBER INFORMATION DESCRIPTION CPP 50 STR EXIT TWO PIECE PLASTIC COVER WITH THUMBSCREWS		
CHECKED SCN 24-JAN-07	ISSUED 24-JAN-07	SIZE B	CODE 200_126T	REV A
SCALE 1:1		DWG NO. 0002-200-126T		SHEET 1 OF 1