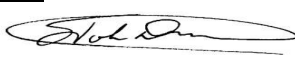






ENGINEERING CHANGE NOTICE

<p style="font-size: 1.2em; font-weight: bold; margin: 0;">Northern Technologies</p> <p><u>CLASS</u></p> <p><input type="checkbox"/> NEXT BUY</p> <p><input checked="" type="checkbox"/> NEXT PRODUCTION</p> <p><input checked="" type="checkbox"/> WORK IN PROCESS</p> <p><input checked="" type="checkbox"/> FINISHED GOODS</p> <p><input type="checkbox"/> RETURNS FROM FIELD</p> <p><input type="checkbox"/> UNITS IN FIELD</p> <p><input checked="" type="checkbox"/> UNITS IN STOCKROOM</p>	<u>ORIGINATOR</u>	<u>DATE</u>	<u>ECN</u>	
	J. DiPietro		19-FEB-24	0844
	<u>PRODUCT TO BE CHANGED</u>		<u>EFFECTIVE DATE</u>	
	CPP 45 DEGREE GRAY FAMILY OF CONNECTOR COVER PRODUCTS		19-FEB-24	
	<u>P/N</u> REFERENCE DESCRIPTION OF CHANGE			
	<u>REASON FOR CHANGE</u>			
	<p>Due to declining sales and increasing challenges in maintaining product conformance, certain product part numbers are now discontinued. The cost of materials and labor maintaining these products have increased to the point where they can no longer be sustained.</p> <p>Products will be available until current inventory is depleted. No future replacement is planned.</p>			
<u>TYPE OF CHANGE</u>				
<input checked="" type="checkbox"/> DOCUMENTATION				
<input checked="" type="checkbox"/> <u>SYSPRO / SYSTEM</u>				
<u>REASON FOR CHANGE</u>				
<input type="checkbox"/> DRAWING ERROR				
<input type="checkbox"/> FACILITATE MFG				
<input type="checkbox"/> MEET SPECS				
<input type="checkbox"/> PRODUCT IMPROVEMENT				
<input type="checkbox"/> VENDOR				
<input checked="" type="checkbox"/> <u>DISCONTINUED</u>				
<u>DOCUMENTS REVISED</u>				
<input checked="" type="checkbox"/> ASSEMBLY DRAWING				
<input checked="" type="checkbox"/> BILL OF MATERIALS				
<input checked="" type="checkbox"/> QA PROCEDURE				
<input checked="" type="checkbox"/> SCHEMATIC				
<input checked="" type="checkbox"/> FABRICATION DWG				
<input checked="" type="checkbox"/> TEST PROCEDURES				
<input type="checkbox"/> _____				
<u>ENCLOSURES</u>				
<u>COSTS</u>				
TIME: HRS @ _____ = _____				
MATERIALS _____ = _____				
TOTAL = _____				
	<u>ENGINEERING</u>	<u>MATERIALS</u>		
				
	<u>PRODUCTION</u>	<u>PRODUCT MKTG</u>		
				
	<u>QUALITY ASSURANCE</u>	<u>TEST ENGINEERING</u>		
				
	<u>VICE PRESIDENT</u>	<u>DESIGN</u>		

Northern Technologies

Product Discontinuation Announcement

February 19, 2024

Due to declining sales and increasing challenges in maintaining product conformance, certain product part numbers are now discontinued.

The cost of materials and labor maintaining these products have increased to the point where they can no longer be sustained.

Discontinued Product Part Numbers

C88E200005, C88E200005T, C88E200005T3, C88E201005, C88E201005T, C88E201005T3,
C88E210005, C88E210005T, C88E210005T3, C88E211005, C88E211005T, C88E211005T3,
C88E220005, C88E220005T, C88E220005T3, C88E221005, C88E221005T, C88E221005T3,
C88E230005, C88E230005T, C88E230005T3, C88E231005, C88E231005T, C88E231005T3,
A30E200005, A30E201005, A30E210005, A30E211005, A30E220005, A30E221005,
A30E230005, A30E231005

Replacement Product Part Numbers

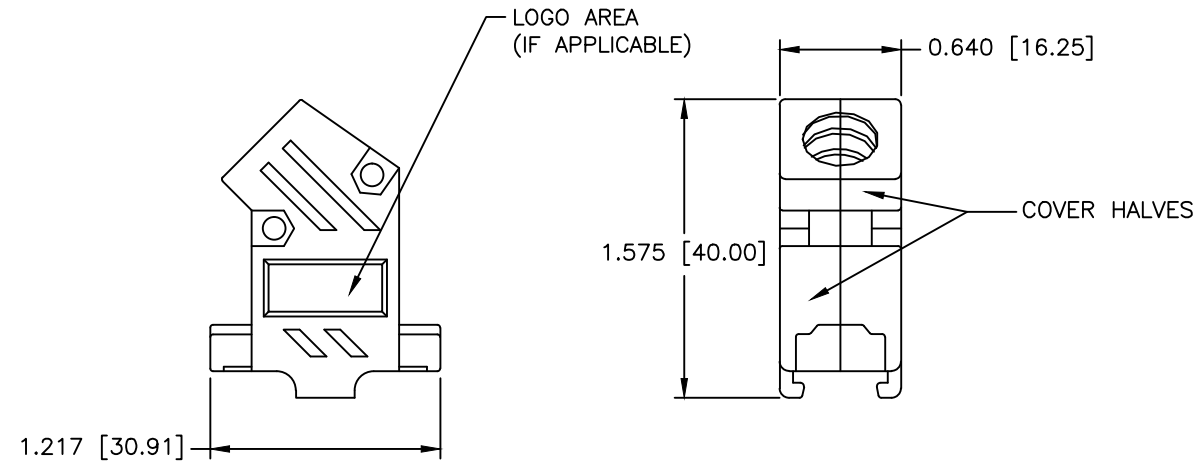
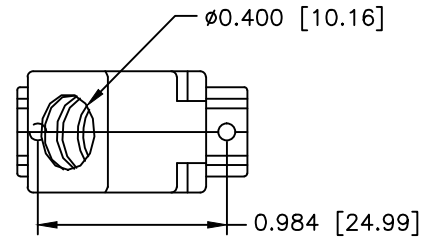
Products will be available until current inventory is depleted.

No future replacement is planned.

REF: ECN0844

For further information please contact:
sales@northerntech.com (1-800-456-1875)

REVISIONS				
ZONE	REV	DESCRIPTION	DATE	APPROVED
	A	ECN 0607	10-AUG-06	
	B	ECN 0733	06-NOV-13	
	C	ECN 0844	19-FEB-24	



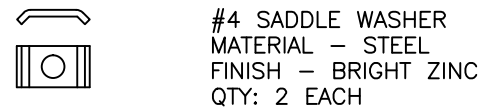
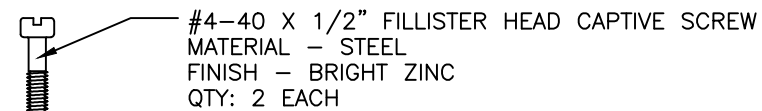
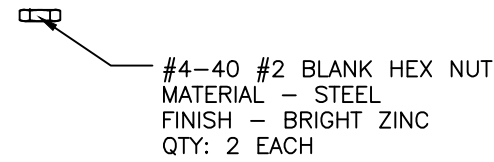
PART NUMBER INFORMATION
COLOR: BLACK

PART#	LOGO STYLE	SUPPLIED
A30E200004	NO LOGO	BULK
C88E200004	NO LOGO	PACKAGED
A30E201004	NORTECH LOGO	BULK
C88E201004	NORTECH LOGO	PACKAGED

COLOR: GRAY - DISCONTINUED

PART#	LOGO STYLE	SUPPLIED
A30E200005	NO LOGO	DISCONTINUED
C88E200005	NO LOGO	DISCONTINUED
A30E201005	NORTECH LOGO*	DISCONTINUED
C88E201005	NORTECH LOGO*	DISCONTINUED

* - SPECIAL ORDER ITEM - CONTACT NORTHERN TECHNOLOGIES

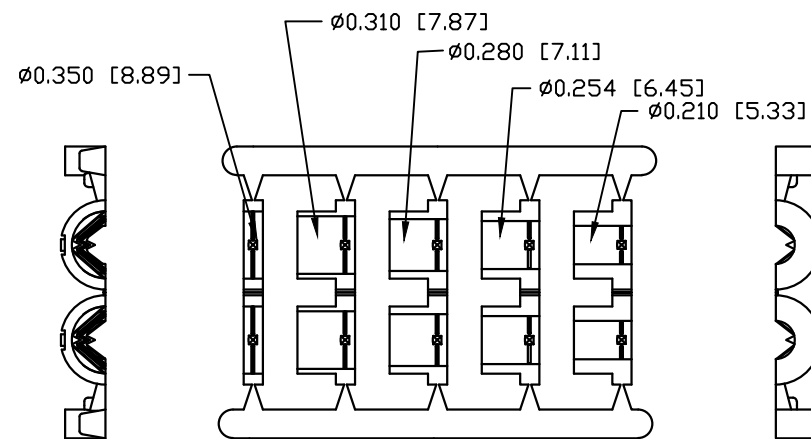


CONNECTOR COVER:

- 1.MATERIAL: THERMOPLASTIC UL94V-0
- 2.COLOR: BLACK
- 3.DIMENSIONS: INCHES [MM]
- 4.TOLERANCE: ±0.015 [0.381]

JACKET INSERT TREE

- 1.MATERIAL: POLYPROPYLENE HOMOPOLYMER
- 2.COLOR: BLACK
- 3.DIMENSIONS: INCHES [MM]
- 4.TOLERANCE: ±0.010 [0.254]

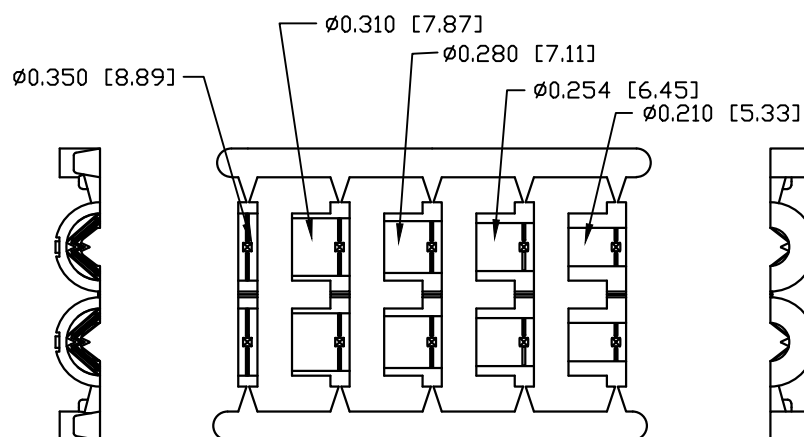
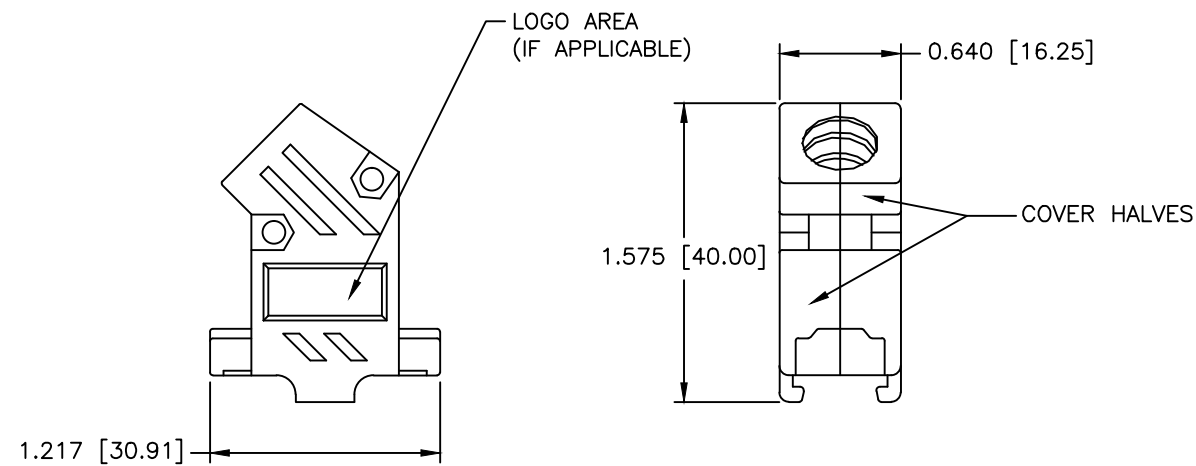
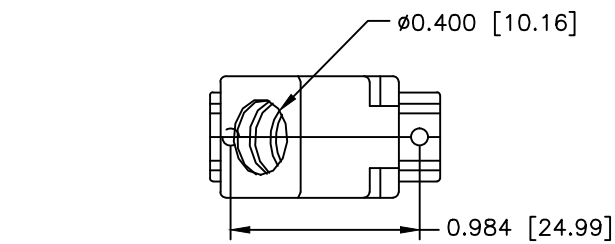


JACKET INSERT TREE
QTY: 1

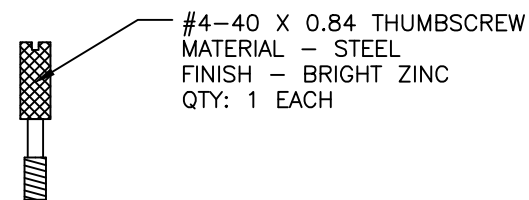
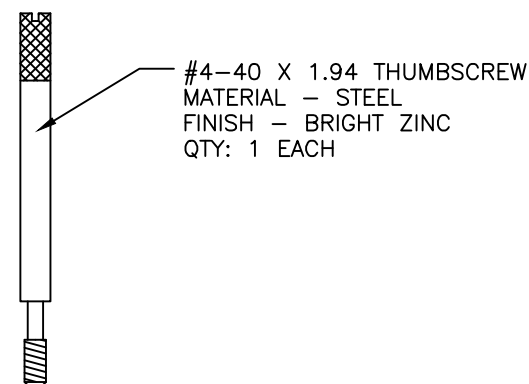
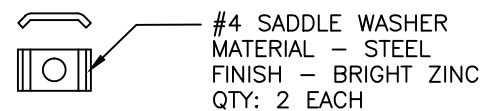
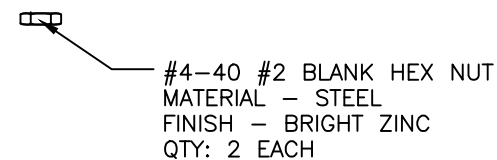
THIS IS A CONTROLLED DOCUMENT AND IS SUBJECT TO CHANGE. CONTACT NORTHERN TECHNOLOGIES ENGINEERING FOR THE LATEST REVISION.

UNLESS OTHERWISE SPECIFIED 1. ALL DIMENSIONS ARE IN INCHES (MM) 2. DIMENSIONS ARE TYPICAL		Northern Technologies <small>THIS DRAWING IS THE PROPERTY OF NORTHERN TECHNOLOGIES AND SHOULD NOT BE REPRODUCED WITHOUT NORTHERN TECHNOLOGIES WRITTEN PERMISSION.</small>		
DRAWN JSD 27-APR-05		PART NUMBER SEE PART NUMBER INFORMATION		
CHECKED SCN 27-APR-05		DESCRIPTION CPP 09 45 DEGREE EXIT TWO PIECE PLASTIC COVER		
ISSUED 01-SEP-05		SIZE B	CODE 200_127	REV C
SCALE 1:1		DWG NO. 0002-200-127		SHEET 1 OF 1

REVISIONS				
ZONE	REV	DESCRIPTION	DATE	APPROVED
	A	ECN 0733	06-NOV-13	
	B	ECN 0844	19-FEB-24	



JACKET INSERT TREE
QTY: 1



PART NUMBER INFORMATION
COLOR: BLACK

PART#	LOGO STYLE	SUPPLIED
C88E200004T3	NO LOGO	PACKAGED
C88E201004T3	NORTECH LOGO	PACKAGED

COLOR: GRAY - DISCONTINUED

PART#	LOGO STYLE	SUPPLIED
C88E200005T3	NO LOGO	DISCONTINUED
C88E201005T3	NORTECH LOGO*	DISCONTINUED

* - SPECIAL ORDER ITEM - CONTACT
NORTHERN TECHNOLOGIES

CONNECTOR COVER:

- 1.MATERIAL: THERMOPLASTIC UL94V-0
- 2.COLOR: BLACK
- 3.DIMENSIONS: INCHES [MM]
- 4.TOLERANCE: ±0.015 [0.381]

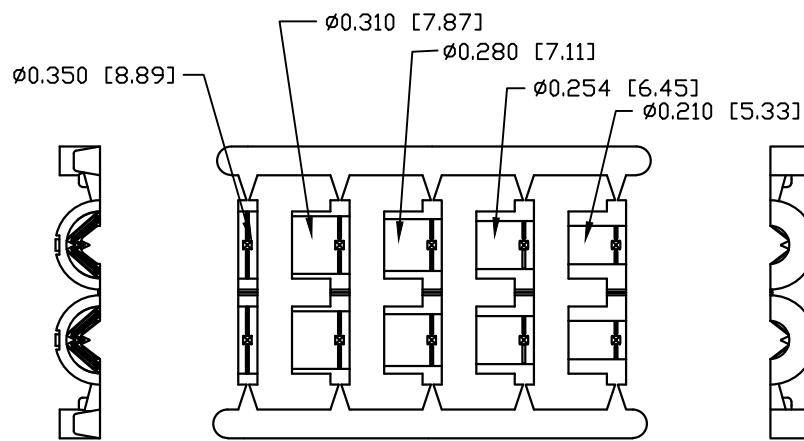
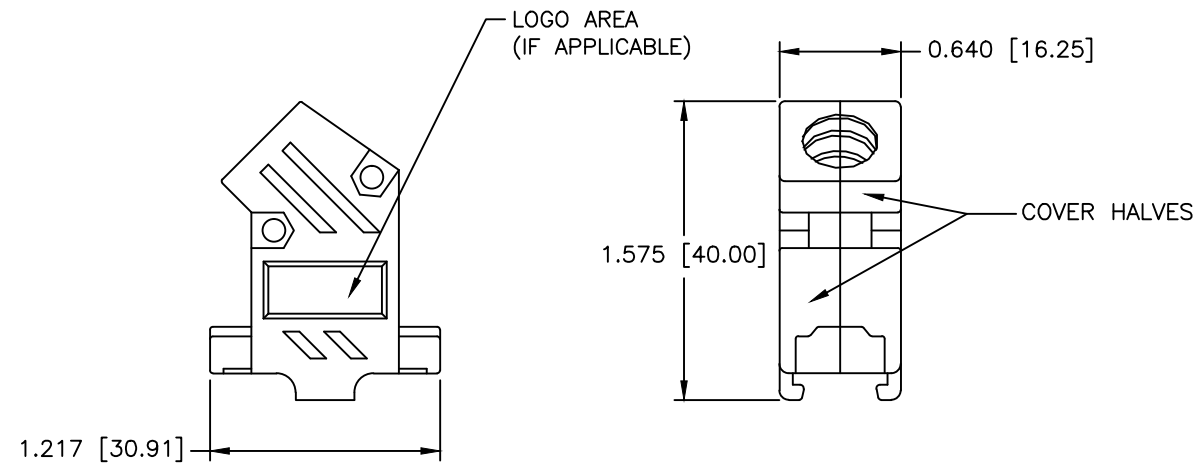
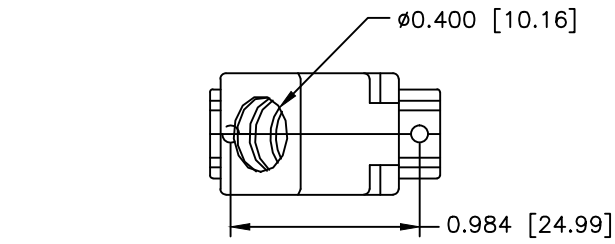
JACKET INSERT TREE

- 1.MATERIAL: POLYPROPYLENE HOMOPOLYMER
- 2.COLOR: BLACK
- 3.DIMENSIONS: INCHES [MM]
- 4.TOLERANCE: ±0.010 [0.254]

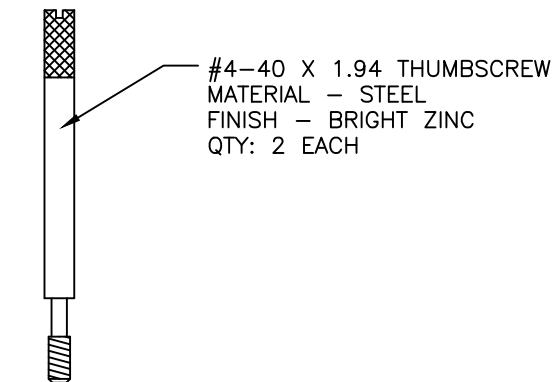
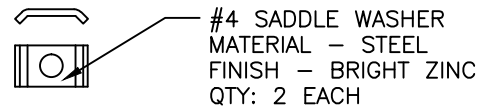
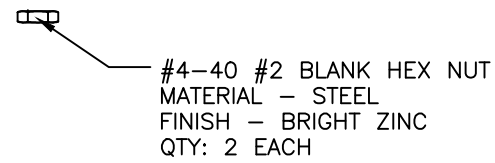
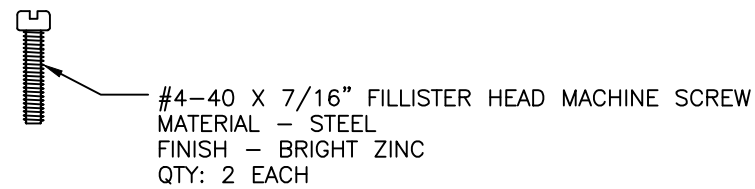
THIS IS A CONTROLLED DOCUMENT AND IS
SUBJECT TO CHANGE. CONTACT NORTHERN
TECHNOLOGIES ENGINEERING FOR THE
LATEST REVISION.

UNLESS OTHERWISE SPECIFIED 1. ALL DIMENSIONS ARE IN INCHES (MM) 2. DIMENSIONS ARE TYPICAL		Northern Technologies <small>THIS DRAWING IS THE PROPERTY OF NORTHERN TECHNOLOGIES AND SHOULD NOT BE REPRODUCED WITHOUT NORTHERN TECHNOLOGIES WRITTEN PERMISSION.</small>		
DRAWN JSD		PART NUMBER SEE PART NUMBER INFORMATION		
09-DEC-08		DESCRIPTION CPP 09 45 DEGREE EXIT TWD PIECE PLASTIC COVER WITH THUMBSCREWS		
CHECKED SCN	09-DEC-08	SIZE B	CODE 200_127T3	DWG NO. 0002-200-127T3
ISSUED	09-DEC-08	SCALE N.T.S.		REV B
				SHEET 1 OF 1

REVISIONS				
ZONE	REV	DESCRIPTION	DATE	APPROVED
	A	ECN 0667	09-DEC-08	
	B	ECN 0733	06-NOV-13	
	C	ECN 0844	19-FEB-24	



JACKET INSERT TREE
QTY: 1



PART NUMBER INFORMATION
COLOR: BLACK

PART#	LOGO STYLE	SUPPLIED
C88E200004T	NO LOGO	PACKAGED
C88E201004T	NORTECH LOGO	PACKAGED

COLOR: GRAY - DISCONTINUED

PART#	LOGO STYLE	SUPPLIED
C88E200005T	NO LOGO	DISCONTINUED
C88E201005T	NORTECH LOGO*	DISCONTINUED

* - SPECIAL ORDER ITEM - CONTACT NORTHERN TECHNOLOGIES

CONNECTOR COVER:

- 1.MATERIAL: THERMOPLASTIC UL94V-0
- 2.COLOR: BLACK
- 3.DIMENSIONS: INCHES [MM]
- 4.TOLERANCE: ±0.015 [0.381]

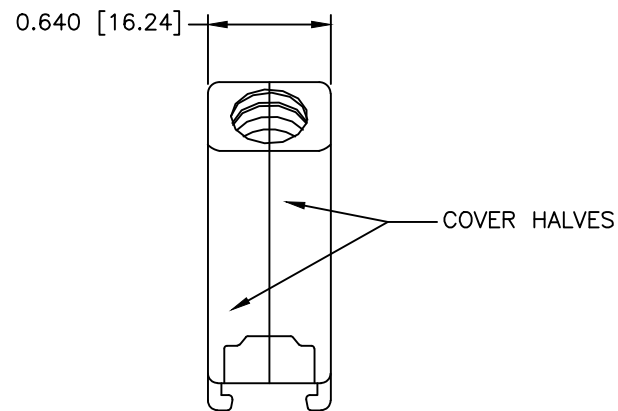
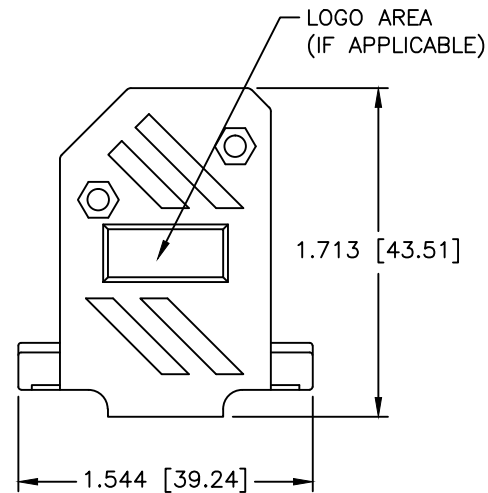
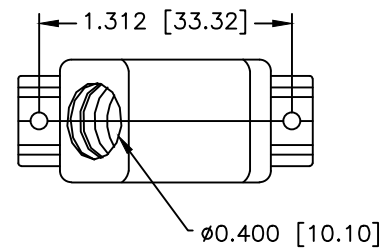
JACKET INSERT TREE

- 1.MATERIAL: POLYPROPYLENE HOMOPOLYMER
- 2.COLOR: BLACK
- 3.DIMENSIONS: INCHES [MM]
- 4.TOLERANCE: ±0.010 [0.254]

THIS IS A CONTROLLED DOCUMENT AND IS SUBJECT TO CHANGE. CONTACT NORTHERN TECHNOLOGIES ENGINEERING FOR THE LATEST REVISION.

UNLESS OTHERWISE SPECIFIED 1. ALL DIMENSIONS ARE IN INCHES (MM) 2. DIMENSIONS ARE TYPICAL		Northern Technologies <small>THIS DRAWING IS THE PROPERTY OF NORTHERN TECHNOLOGIES AND SHOULD NOT BE REPRODUCED WITHOUT NORTHERN TECHNOLOGIES WRITTEN PERMISSION.</small>		
DRAWN JSD 24-JAN-07		PART NUMBER SEE PART NUMBER INFORMATION		
CHECKED SCN 24-JAN-07		DESCRIPTION CPP 09 45 DEGREE EXIT TWD PIECE PLASTIC COVER WITH THUMBSCREWS		
ISSUED 24-JAN-07		SIZE B	CODE 200_127T	DWG NO. 0002-200-127T
		SCALE N.T.S.	REV C	
		SHEET 1 OF 1		

REVISIONS				
ZONE	REV	DESCRIPTION	DATE	APPROVED
	A	ECN 0607	10-AUG-06	
	B	ECN 0844	19-FEB-24	



PART NUMBER INFORMATION
COLOR: BLACK

PART#	LOGO STYLE	SUPPLIED
A30E210004	NO LOGO	BULK
C88E210004	NO LOGO	PACKAGED
A30E211004	NORTECH LOGO*	BULK
C88E211004	NORTECH LOGO*	PACKAGED

COLOR: GRAY - DISCONTINUED

PART#	LOGO STYLE	SUPPLIED
A30E210005	NO LOGO	DISCONTINUED
C88E210005	NO LOGO	DISCONTINUED
A30E211005	NORTECH LOGO*	DISCONTINUED
C88E211005	NORTECH LOGO*	DISCONTINUED

* - SPECIAL ORDER ITEM - CONTACT NORTHERN TECHNOLOGIES

#4-40 X 7/16" FILLISTER HEAD MACHINE SCREW
 MATERIAL - STEEL
 FINISH - BRIGHT ZINC (HEXAVALENT CHROMIUM FREE)
 QTY: 2 EACH

#4-40 #2 BLANK HEX NUT
 MATERIAL - STEEL
 FINISH - BRIGHT ZINC (HEXAVALENT CHROMIUM FREE)
 QTY: 2 EACH

#4-40 X 1/2" FILLISTER HEAD CAPTIVE SCREW
 MATERIAL - STEEL
 FINISH - BRIGHT ZINC (HEXAVALENT CHROMIUM FREE)
 QTY: 2 EACH

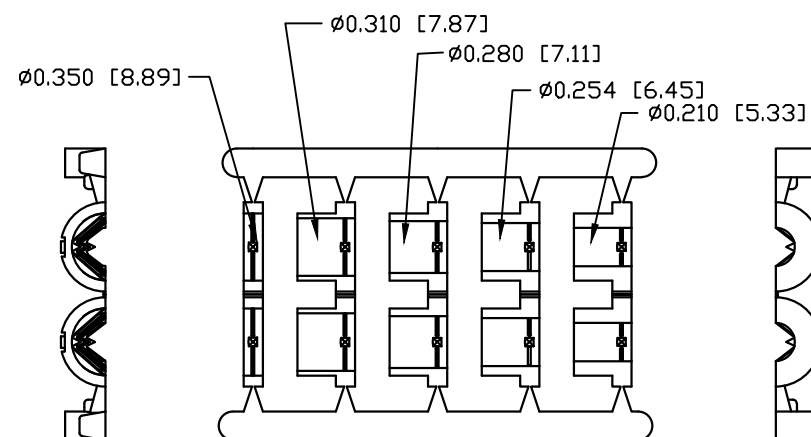
#4 SADDLE WASHER
 MATERIAL - STEEL
 FINISH - BRIGHT ZINC (HEXAVALENT CHROMIUM FREE)
 QTY: 2 EACH

CONNECTOR COVER:

- 1.MATERIAL: THERMOPLASTIC UL94V-0
- 2.COLOR: BLACK
- 3.DIMENSIONS: INCHES [MM]
- 4.TOLERANCE: ±0.015 [0.381]

JACKET INSERT TREE

- 1.MATERIAL: POLYPROPYLENE HOMOPOLYMER
- 2.COLOR: BLACK
- 3.DIMENSIONS: INCHES [MM]
- 4.TOLERANCE: ±0.010 [0.254]

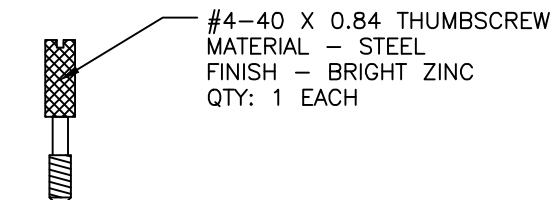
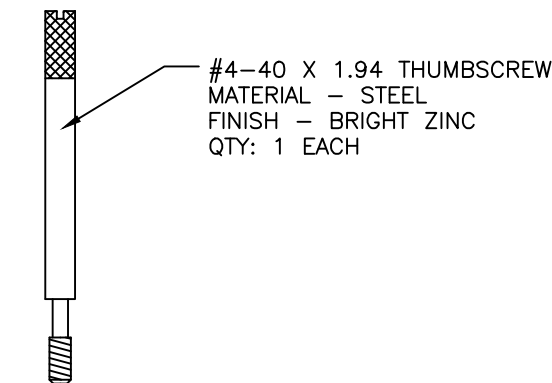
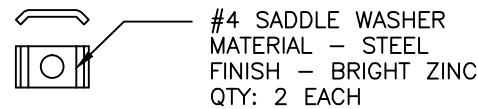
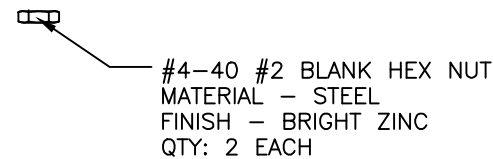
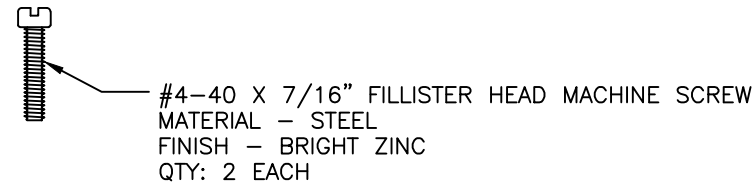
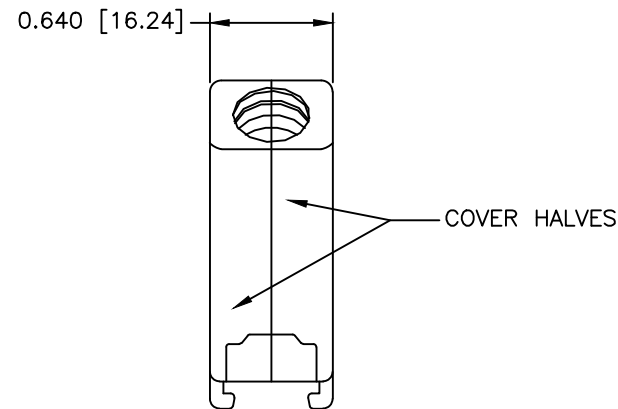
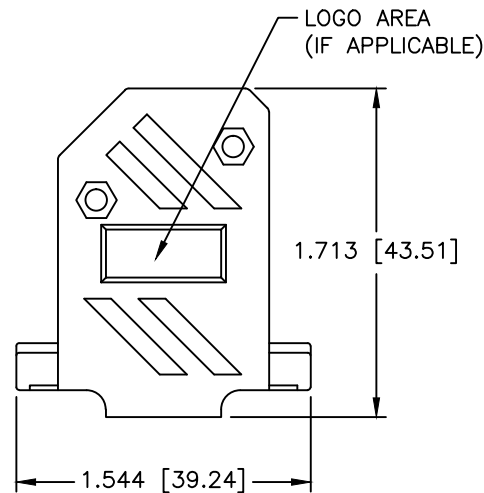
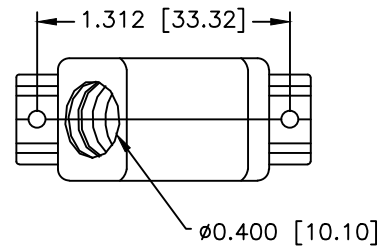


JACKET INSERT TREE
 QTY: 1

THIS IS A CONTROLLED DOCUMENT AND IS SUBJECT TO CHANGE. CONTACT NORTHERN TECHNOLOGIES ENGINEERING FOR THE LATEST REVISION.

UNLESS OTHERWISE SPECIFIED 1. ALL DIMENSIONS ARE IN INCHES (MM) 2. DIMENSIONS ARE TYPICAL		Northern Technologies <small>THIS DRAWING IS THE PROPERTY OF NORTHERN TECHNOLOGIES AND SHOULD NOT BE REPRODUCED WITHOUT NORTHERN TECHNOLOGIES WRITTEN PERMISSION.</small>		
DRAWN JSD 27-APR-05		PART NUMBER SEE PART NUMBER INFORMATION		
CHECKED SCN 27-APR-05		DESCRIPTION CPP 15 45 DEGREE EXIT TWO PIECE PLASTIC COVER		
ISSUED 01-SEP-05		SIZE B	CODE 200_128	REV B
SCALE 1:1		DWG NO. 0002-200-128		SHEET 1 OF 1

REVISIONS				
ZONE	REV	DESCRIPTION	DATE	APPROVED
	A	ECN 0844	19-FEB-24	



PART NUMBER INFORMATION
COLOR: BLACK

PART#	LOGO STYLE	SUPPLIED
C88E210004T3	NO LOGO	PACKAGED
C88E211004T3	NORTECH LOGO*	PACKAGED

COLOR: GRAY - DISCONTINUED

PART#	LOGO STYLE	SUPPLIED
C88E210005T3	NO LOGO	DISCONTINUED
C88E211005T3	NORTECH LOGO*	DISCONTINUED

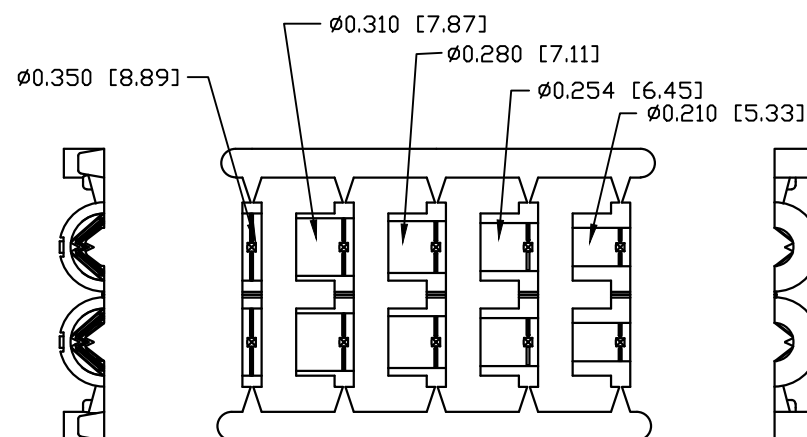
* - SPECIAL ORDER ITEM - CONTACT NORTHERN TECHNOLOGIES

CONNECTOR COVER:

- 1.MATERIAL: THERMOPLASTIC UL94V-0
- 2.COLOR: BLACK
- 3.DIMENSIONS: INCHES [MM]
- 4.TOLERANCE: ±0.015 [0.381]

JACKET INSERT TREE

- 1.MATERIAL: POLYPROPYLENE HOMOPOLYMER
- 2.COLOR: BLACK
- 3.DIMENSIONS: INCHES [MM]
- 4.TOLERANCE: ±0.010 [0.254]

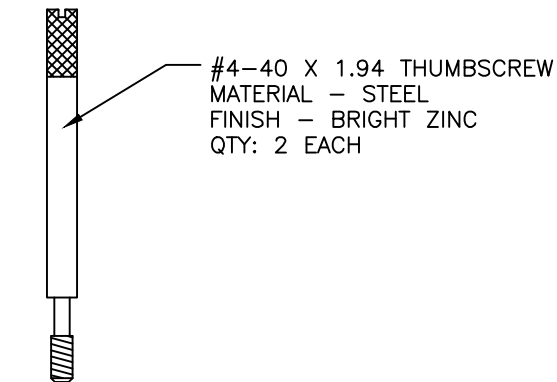
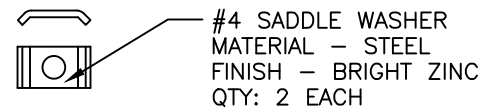
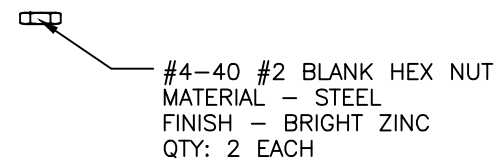
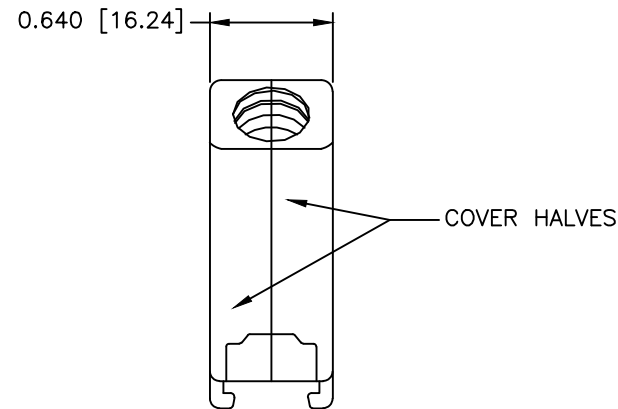
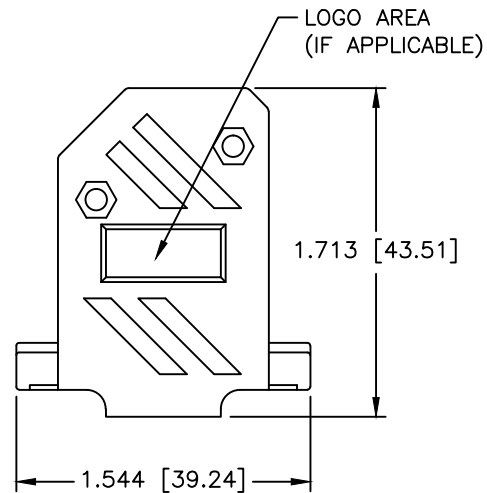
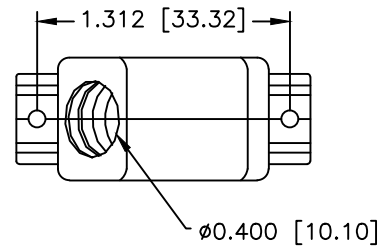


JACKET INSERT TREE
QTY: 1

THIS IS A CONTROLLED DOCUMENT AND IS SUBJECT TO CHANGE. CONTACT NORTHERN TECHNOLOGIES ENGINEERING FOR THE LATEST REVISION.

UNLESS OTHERWISE SPECIFIED 1. ALL DIMENSIONS ARE IN INCHES (MM) 2. DIMENSIONS ARE TYPICAL		Northern Technologies <small>THIS DRAWING IS THE PROPERTY OF NORTHERN TECHNOLOGIES AND SHOULD NOT BE REPRODUCED WITHOUT NORTHERN TECHNOLOGIES WRITTEN PERMISSION.</small>		
DRAWN JSD		PART NUMBER SEE PART NUMBER INFORMATION		
09-DEC-08		DESCRIPTION CPP 15 45 DEGREE EXIT TWD PIECE PLASTIC COVER WITH THUMBSCREWS		
CHECKED SCN	09-DEC-08	SIZE B	CODE 200_128T3	DWG NO. 0002-200-128T3
ISSUED	09-DEC-08	SCALE N.T.S.		REV A
				SHEET 1 OF 1

REVISIONS				
ZONE	REV	DESCRIPTION	DATE	APPROVED
	A	ECN 0667	09-DEC-08	
	B	ECN 0844	19-FEB-24	



PART NUMBER INFORMATION

COLOR: BLACK

PART#	LOGO STYLE	SUPPLIED
C88E210004T	NO LOGO	PACKAGED
C88E211004T	NORTECH LOGO*	PACKAGED

COLOR: GRAY -DISCONTINUED

PART#	LOGO STYLE	DISCONTINUED
C88E210005T	NO LOGO	DISCONTINUED
C88E211005T	NORTECH LOGO*	DISCONTINUED

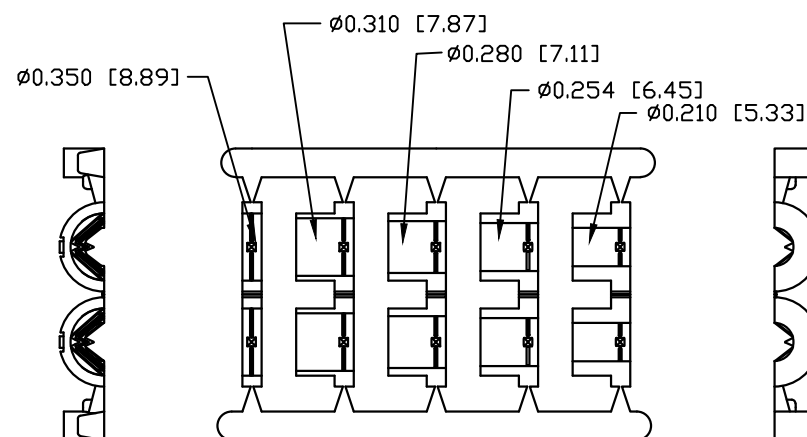
* - SPECIAL ORDER ITEM - CONTACT NORTHERN TECHNOLOGIES

CONNECTOR COVER:

- 1.MATERIAL: THERMOPLASTIC UL94V-0
- 2.COLOR: BLACK
- 3.DIMENSIONS: INCHES [MM]
- 4.TOLERANCE: ±0.015 [0.381]

JACKET INSERT TREE

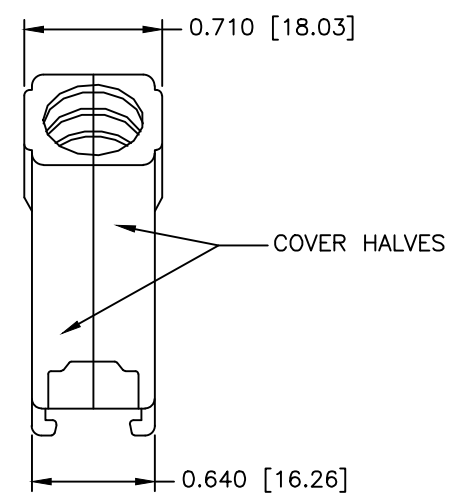
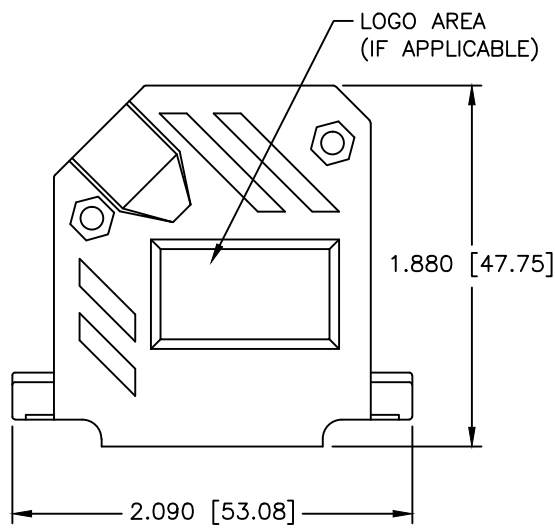
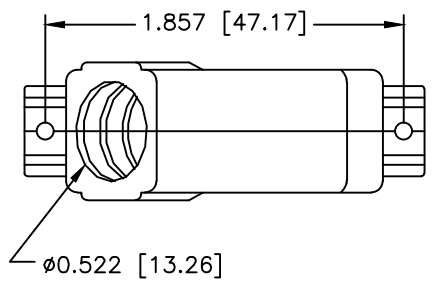
- 1.MATERIAL: POLYPROPYLENE HOMOPOLYMER
- 2.COLOR: BLACK
- 3.DIMENSIONS: INCHES [MM]
- 4.TOLERANCE: ±0.010 [0.254]



JACKET INSERT TREE
QTY: 1

THIS IS A CONTROLLED DOCUMENT AND IS SUBJECT TO CHANGE. CONTACT NORTHERN TECHNOLOGIES ENGINEERING FOR THE LATEST REVISION.

UNLESS OTHERWISE SPECIFIED 1. ALL DIMENSIONS ARE IN INCHES (MM) 2. DIMENSIONS ARE TYPICAL		Northern Technologies <small>THIS DRAWING IS THE PROPERTY OF NORTHERN TECHNOLOGIES AND SHOULD NOT BE REPRODUCED WITHOUT NORTHERN TECHNOLOGIES WRITTEN PERMISSION.</small>		
DRAWN JSD 24-JAN-07		PART NUMBER SEE PART NUMBER INFORMATION		
CHECKED SCN 24-JAN-07		DESCRIPTION CPP 15 45 DEGREE EXIT TWO PIECE PLASTIC COVER WITH THUMBSCREWS		
ISSUED 24-JAN-07		SIZE B	CODE 200_128T	DWG NO. 0002-200-128T
		SCALE N.T.S.	SHEET 1 OF 1	



REVISIONS				
ZONE	REV	DESCRIPTION	DATE	APPROVED
	A	ECN 0607	10-AUG-06	
	B	ECN 0844	19-FEB-24	



PART NUMBER INFORMATION
COLOR: BLACK

PART#	LOGO STYLE	SUPPLIED
A30E220004	NO LOGO	BULK
C88E220004	NO LOGO	PACKAGED
A30E221004	NORTECH LOGO	BULK
C88E221004	NORTECH LOGO	PACKAGED

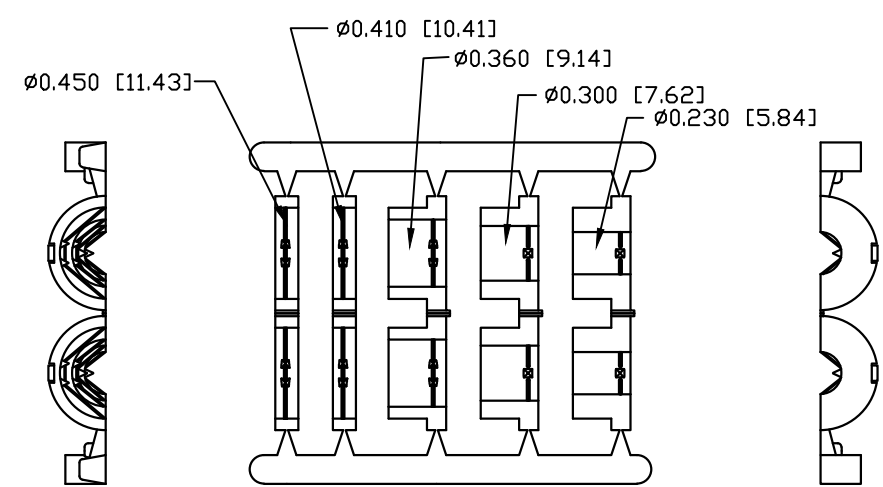
COLOR: GRAY - DISCONTINUED

PART#	LOGO STYLE	SUPPLIED
A30E220005	NO LOGO	DISCONTINUED
C88E220005	NO LOGO	DISCONTINUED
A30E221005	NORTECH LOGO*	DISCONTINUED
C88E221005	NORTECH LOGO*	DISCONTINUED

* - SPECIAL ORDER ITEM - CONTACT NORTHERN TECHNOLOGIES

CONNECTOR COVER:
 1.MATERIAL: THERMOPLASTIC UL94V-0
 2.COLOR: BLACK
 3.DIMENSIONS: INCHES [MM]
 4.TOLERANCE: ±0.015 [0.381]

JACKET INSERT TREE
 1.MATERIAL: POLYPROPYLENE HOMOPOLYMER
 2.COLOR: BLACK
 3.DIMENSIONS: INCHES [MM]
 4.TOLERANCE: ±0.010 [0.254]



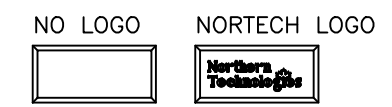
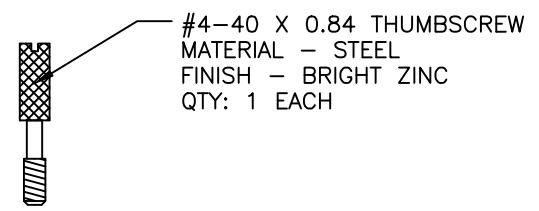
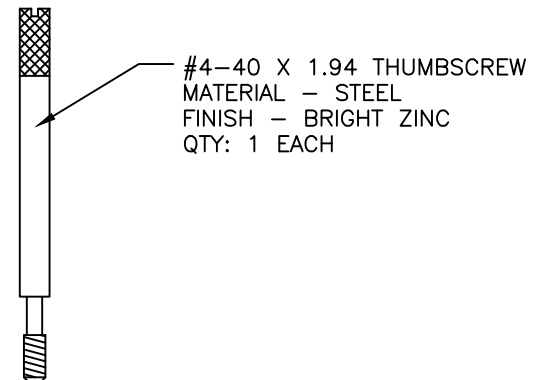
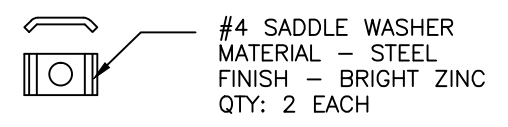
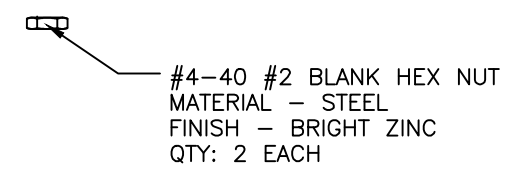
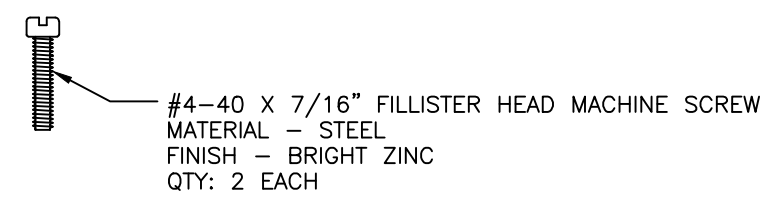
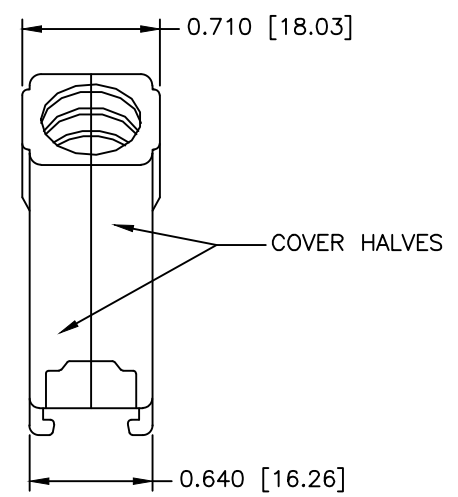
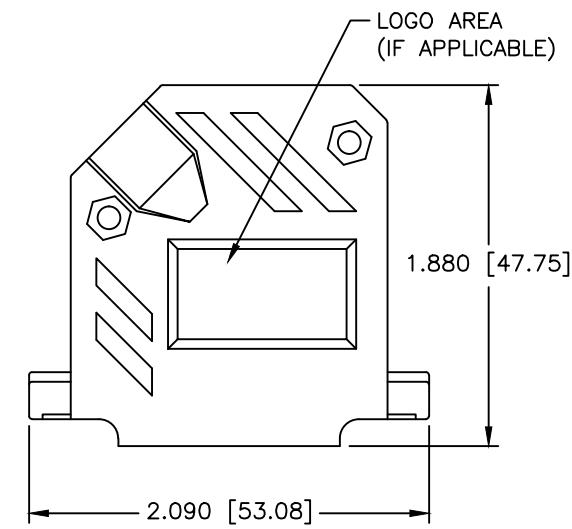
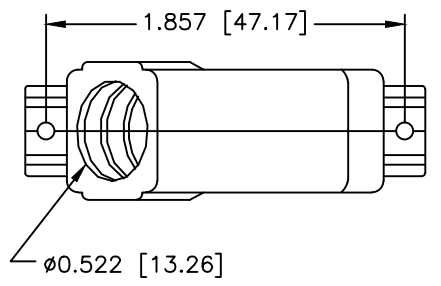
JACKET INSERT TREE
 QTY: 1

- #4-40 X 7/16" FILLISTER HEAD MACHINE SCREW
 MATERIAL - STEEL
 FINISH - BRIGHT ZINC (HEXAVALENT CHROMIUM FREE)
 QTY: 2 EACH
- #4-40 #2 BLANK HEX NUT
 MATERIAL - STEEL
 FINISH - BRIGHT ZINC (HEXAVALENT CHROMIUM FREE)
 QTY: 2 EACH
- #4-40 X 1/2" FILLISTER HEAD CAPTIVE SCREW
 MATERIAL - STEEL
 FINISH - BRIGHT ZINC (HEXAVALENT CHROMIUM FREE)
 QTY: 2 EACH
- #4 SADDLE WASHER
 MATERIAL - STEEL
 FINISH - BRIGHT ZINC (HEXAVALENT CHROMIUM FREE)
 QTY: 2 EACH

THIS IS A CONTROLLED DOCUMENT AND IS SUBJECT TO CHANGE. CONTACT NORTHERN TECHNOLOGIES ENGINEERING FOR THE LATEST REVISION.

UNLESS OTHERWISE SPECIFIED 1. ALL DIMENSIONS ARE IN INCHES (MM) 2. DIMENSIONS ARE TYPICAL		Northern Technologies <small>THIS DRAWING IS THE PROPERTY OF NORTHERN TECHNOLOGIES AND SHOULD NOT BE REPRODUCED WITHOUT NORTHERN TECHNOLOGIES WRITTEN PERMISSION.</small>			
DRAWN JSD 27-APR-05					PART NUMBER SEE PART NUMBER INFORMATION
CHECKED SCN 27-APR-05		DESCRIPTION CPP 25 45 DEGREE EXIT TWO PIECE PLASTIC COVER			
ISSUED 01-SEP-05		SIZE B	CODE 200_129	DWG NO. 0002-200-129	REV B
SCALE 1:1		SHEET 1 OF 1			

REVISIONS				
ZONE	REV	DESCRIPTION	DATE	APPROVED
	A	ECN 0844	19-FEB-24	



PART NUMBER INFORMATION
COLOR: BLACK

PART#	LOGO STYLE	SUPPLIED
C88E220004T3	NO LOGO	PACKAGED
C88E221004T3	NORTECH LOGO	PACKAGED

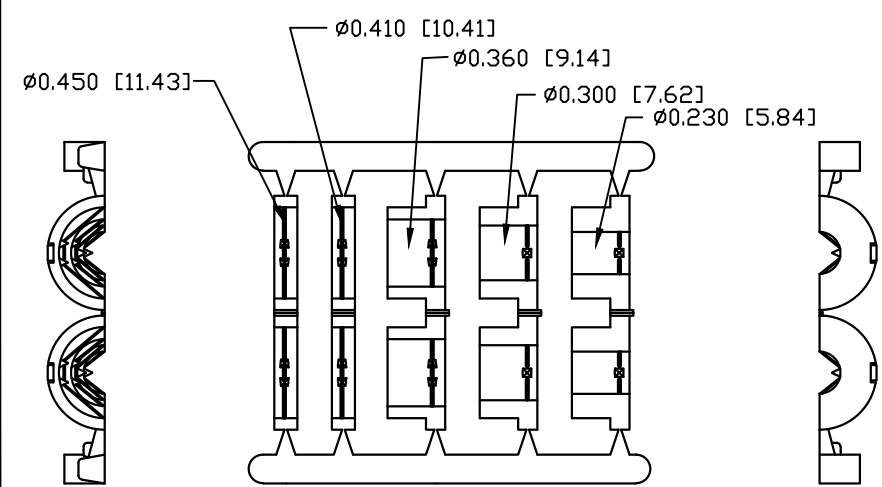
COLOR: GRAY - DISCONTINUED

PART#	LOGO STYLE	SUPPLIED
C88E220005T3	NO LOGO	DISCONTINUED
C88E221005T3	NORTECH LOGO*	DISCONTINUED

* - SPECIAL ORDER ITEM - CONTACT NORTHERN TECHNOLOGIES

CONNECTOR COVER:
1. MATERIAL: THERMOPLASTIC UL94V-0
2. COLOR: BLACK
3. DIMENSIONS: INCHES [MM]
4. TOLERANCE: ±0.015 [0.381]

JACKET INSERT TREE
1. MATERIAL: POLYPROPYLENE HOMOPOLYMER
2. COLOR: BLACK
3. DIMENSIONS: INCHES [MM]
4. TOLERANCE: ±0.010 [0.254]

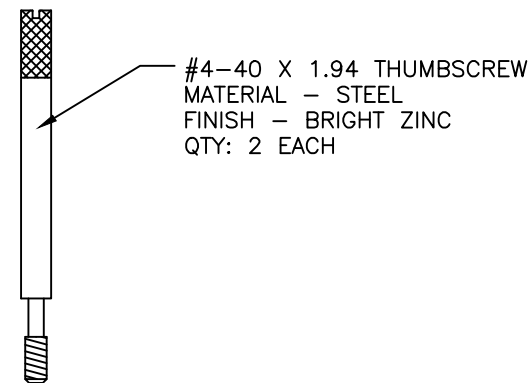
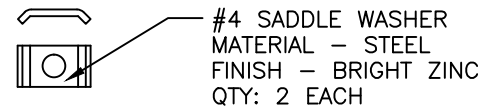
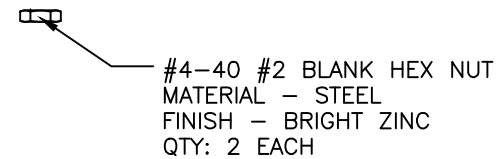
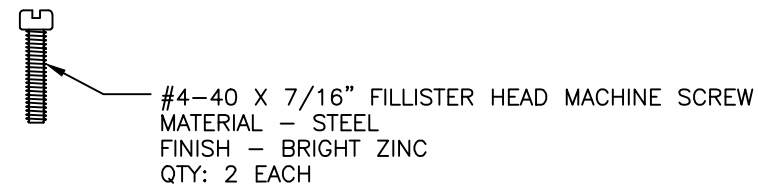
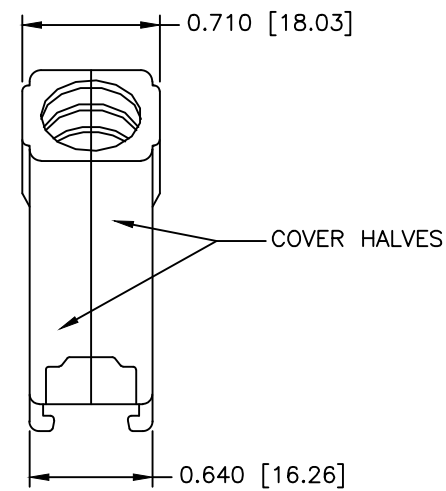
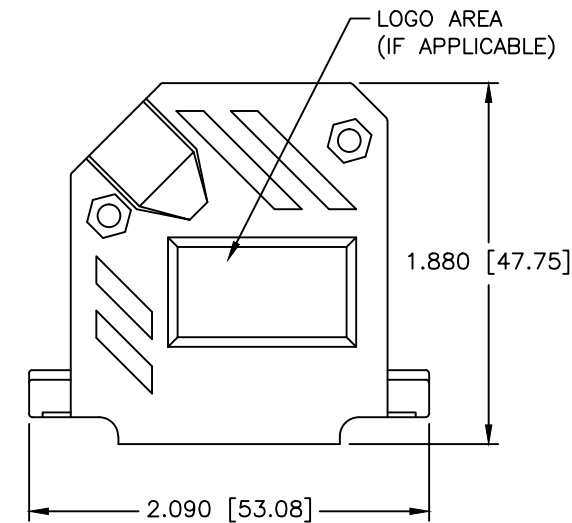
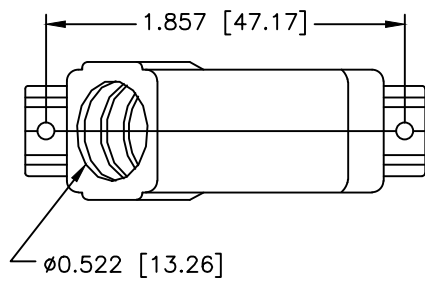


JACKET INSERT TREE
QTY: 1

THIS IS A CONTROLLED DOCUMENT AND IS SUBJECT TO CHANGE. CONTACT NORTHERN TECHNOLOGIES ENGINEERING FOR THE LATEST REVISION.

UNLESS OTHERWISE SPECIFIED 1. ALL DIMENSIONS ARE IN INCHES (MM) 2. DIMENSIONS ARE TYPICAL		Northern Technologies <small>THIS DRAWING IS THE PROPERTY OF NORTHERN TECHNOLOGIES AND SHOULD NOT BE REPRODUCED WITHOUT NORTHERN TECHNOLOGIES WRITTEN PERMISSION.</small>		
DRAWN JSD		PART NUMBER SEE PART NUMBER INFORMATION		
CHECKED SCN		DESCRIPTION CPP 25 45 DEGREE EXIT TWO PIECE PLASTIC COVER WITH THUMBSCREWS		
ISSUED		SIZE B	CODE 200_129T3	DWG NO. 0002-200-129T3
09-DEC-08		REV A		SHEET 1 OF 1

REVISIONS				
ZONE	REV	DESCRIPTION	DATE	APPROVED
	A	ECN 0667	09-DEC-08	
	B	ECN 0844	19-FEB-24	



PART NUMBER INFORMATION

COLOR: BLACK

PART#	LOGO STYLE	SUPPLIED
C88E220004T	NO LOGO	PACKAGED
C88E221004T	NORTECH LOGO	PACKAGED

COLOR: GRAY - DISCONTINUED

PART#	LOGO STYLE	SUPPLIED
C88E220005T	NO LOGO	DISCONTINUED
C88E221005T	NORTECH LOGO*	DISCONTINUED

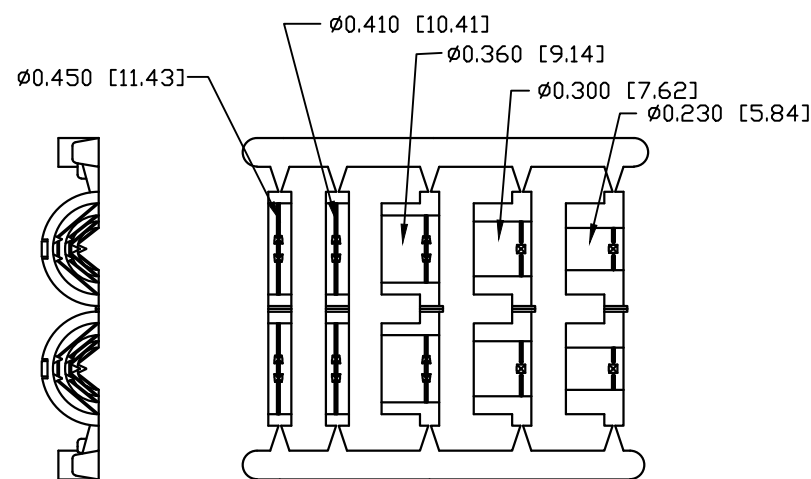
* - SPECIAL ORDER ITEM - CONTACT NORTHERN TECHNOLOGIES

CONNECTOR COVER:

- 1.MATERIAL: THERMOPLASTIC UL94V-0
- 2.COLOR: BLACK
- 3.DIMENSIONS: INCHES [MM]
- 4.TOLERANCE: ±0.015 [0.381]

JACKET INSERT TREE

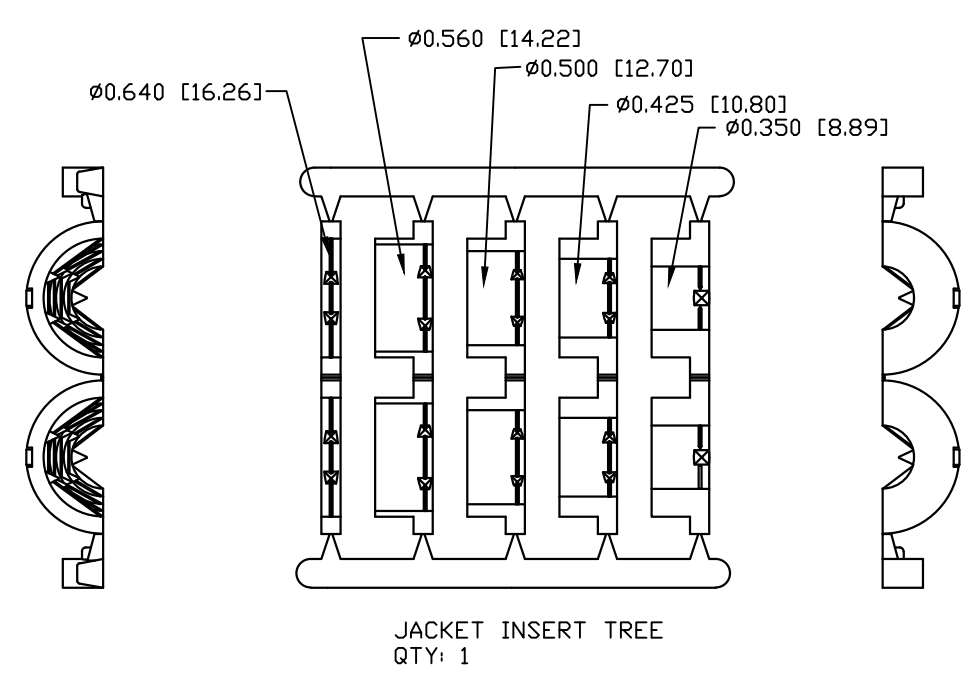
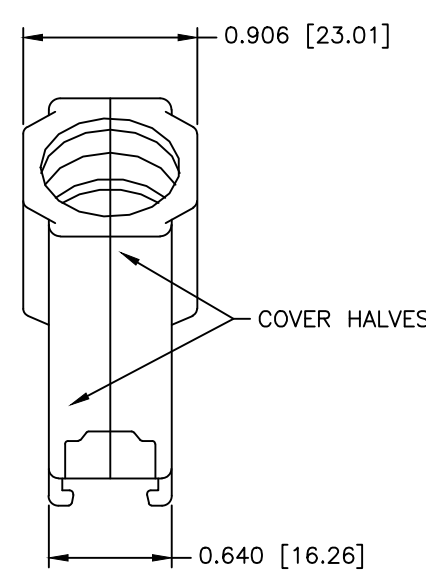
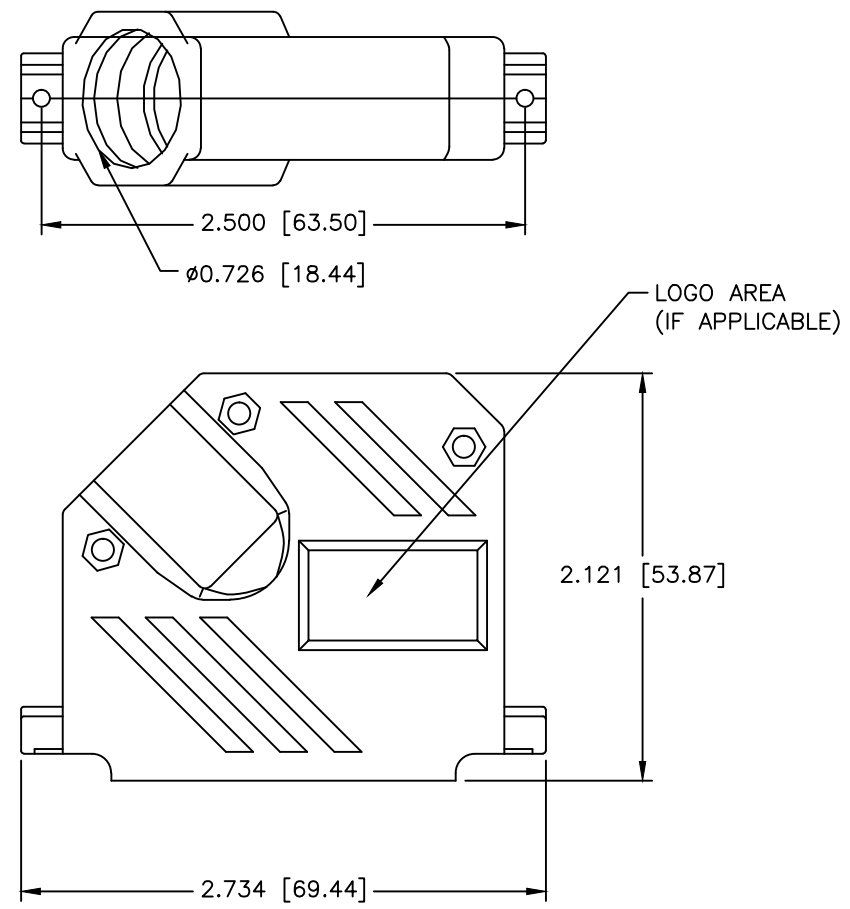
- 1.MATERIAL: POLYPROPYLENE HOMOPOLYMER
- 2.COLOR: BLACK
- 3.DIMENSIONS: INCHES [MM]
- 4.TOLERANCE: ±0.010 [0.254]



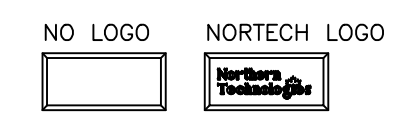
JACKET INSERT TREE
QTY: 1

THIS IS A CONTROLLED DOCUMENT AND IS SUBJECT TO CHANGE. CONTACT NORTHERN TECHNOLOGIES ENGINEERING FOR THE LATEST REVISION.

UNLESS OTHERWISE SPECIFIED 1. ALL DIMENSIONS ARE IN INCHES (MM) 2. DIMENSIONS ARE TYPICAL		Northern Technologies THIS DRAWING IS THE PROPERTY OF NORTHERN TECHNOLOGIES AND SHOULD NOT BE REPRODUCED WITHOUT NORTHERN TECHNOLOGIES WRITTEN PERMISSION.		
DRAWN JSD 24-JAN-07		PART NUMBER SEE PART NUMBER INFORMATION		
CHECKED SCN 24-JAN-07		DESCRIPTION CPP 25 45 DEGREE EXIT TWO PIECE PLASTIC COVER WITH THUMBSCREWS		
ISSUED 24-JAN-07		SIZE B	CODE 200_129T	DWG NO. 0002-200-129T
		SCALE N.T.S.	SHEET 1 OF 1	



REVISIONS				
ZONE	REV	DESCRIPTION	DATE	APPROVED
	A	ECN 0607	10-AUG-06	
	B	ECN 0844	19-FEB-24	




PART NUMBER INFORMATION
 COLOR: BLACK


PART#	LOGO STYLE	SUPPLIED
A30E230004	NO LOGO	BULK
C88E230004	NO LOGO	PACKAGED
A30E231004	NORTECH LOGO*	BULK
C88E231004	NORTECH LOGO*	PACKAGED


COLOR: GRAY - DISCONTINUED

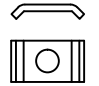
PART#	LOGO STYLE	SUPPLIED
A30E230005	NO LOGO	DISCONTINUED
C88E230005	NO LOGO	DISCONTINUED
A30E231005	NORTECH LOGO*	DISCONTINUED
C88E231005	NORTECH LOGO*	DISCONTINUED

* - SPECIAL ORDER ITEM - CONTACT NORTHERN TECHNOLOGIES

 #4-40 X 7/16" FILLISTER HEAD MACHINE SCREW
 MATERIAL - STEEL
 FINISH - BRIGHT ZINC (HEXAVALENT CHROMIUM FREE)
 QTY: 3 EACH

 #4-40 #2 BLANK HEX NUT
 MATERIAL - STEEL
 FINISH - BRIGHT ZINC (HEXAVALENT CHROMIUM FREE)
 QTY: 3 EACH

 #4-40 X 1/2" FILLISTER HEAD CAPTIVE SCREW
 MATERIAL - STEEL
 FINISH - BRIGHT ZINC (HEXAVALENT CHROMIUM FREE)
 QTY: 2 EACH

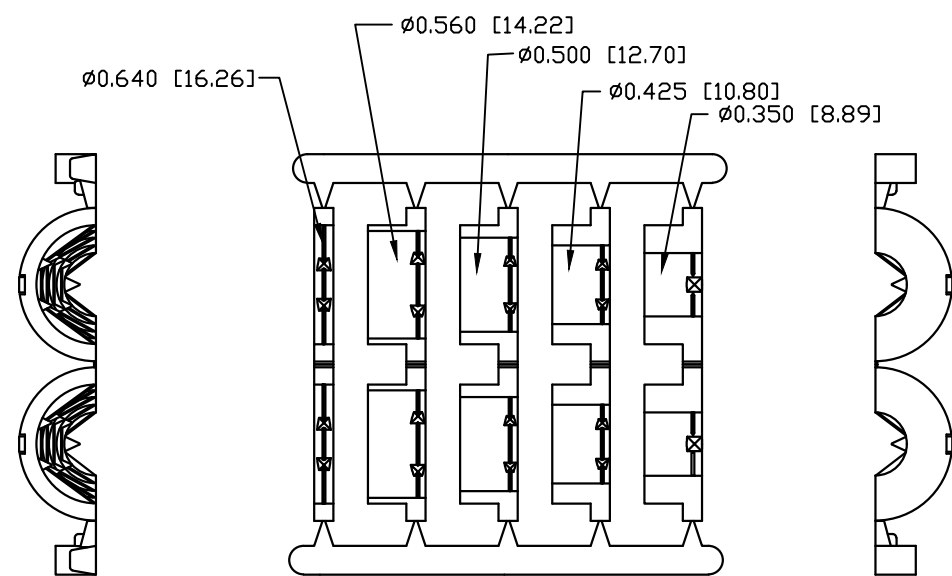
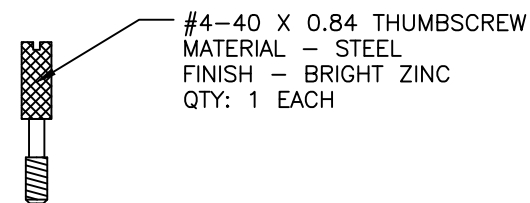
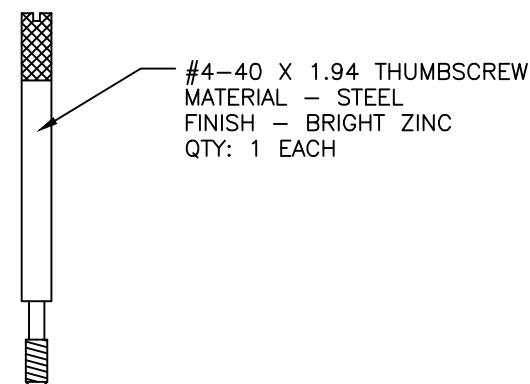
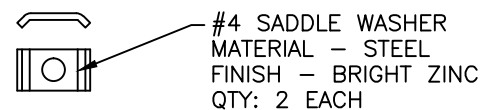
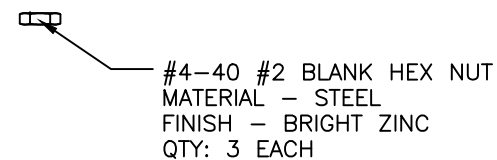
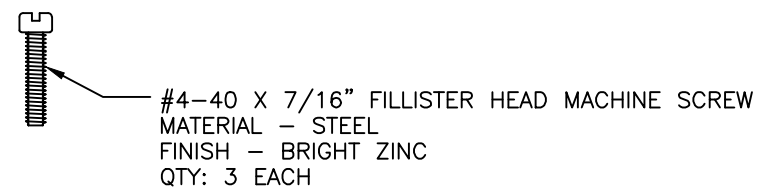
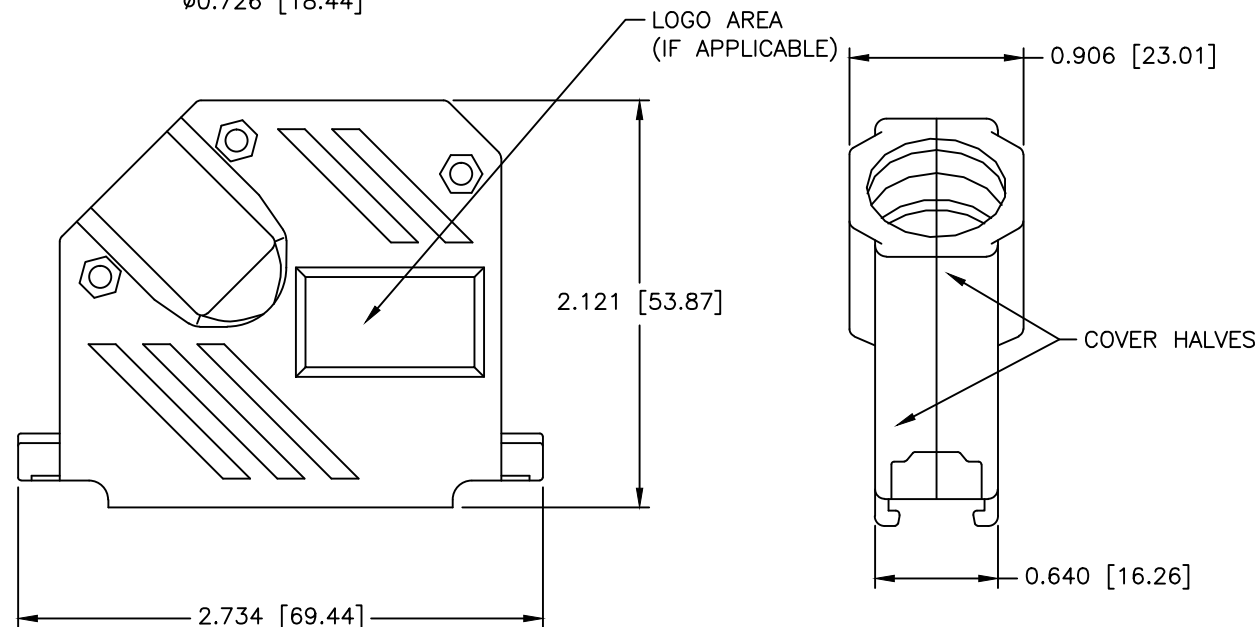
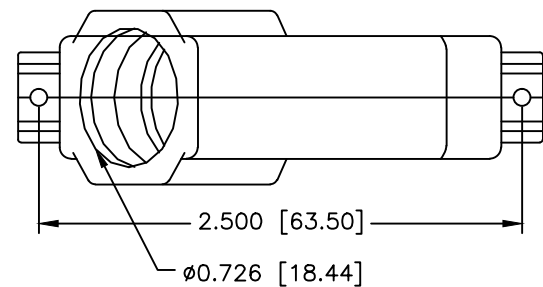
 #4 SADDLE WASHER
 MATERIAL - STEEL
 FINISH - BRIGHT ZINC (HEXAVALENT CHROMIUM FREE)
 QTY: 2 EACH

CONNECTOR COVER:
 1. MATERIAL: THERMOPLASTIC UL94V-0
 2. COLOR: BLACK
 3. DIMENSIONS: INCHES [MM]
 4. TOLERANCE: ±0.015 [0.381]

JACKET INSERT TREE
 1. MATERIAL: POLYPROPYLENE HOMOPOLYMER
 2. COLOR: BLACK
 3. DIMENSIONS: INCHES [MM]
 4. TOLERANCE: ±0.010 [0.254]

THIS IS A CONTROLLED DOCUMENT AND IS SUBJECT TO CHANGE. CONTACT NORTHERN TECHNOLOGIES ENGINEERING FOR THE LATEST REVISION.

UNLESS OTHERWISE SPECIFIED 1. ALL DIMENSIONS ARE IN INCHES (MM) 2. DIMENSIONS ARE TYPICAL		Northern Technologies <small>THIS DRAWING IS THE PROPERTY OF NORTHERN TECHNOLOGIES AND SHOULD NOT BE REPRODUCED WITHOUT NORTHERN TECHNOLOGIES WRITTEN PERMISSION.</small>		
DRAWN JSD		PART NUMBER SEE PART NUMBER INFORMATION		
CHECKED SCN		DESCRIPTION CPP 37 45 DEGREE EXIT TWO PIECE PLASTIC COVER		
ISSUED		SIZE B	CODE 200_130	REV B
27-APR-05		DWG NO. 0002-200-130		
27-APR-05		SCALE 1:1		
01-SEP-05		SHEET 1 OF 1		



JACKET INSERT TREE
QTY: 1

THIS IS A CONTROLLED DOCUMENT AND IS SUBJECT TO CHANGE. CONTACT NORTHERN TECHNOLOGIES ENGINEERING FOR THE LATEST REVISION.

REVISIONS				
ZONE	REV	DESCRIPTION	DATE	APPROVED
	A	ECN 0844	19-FEB-24	



PART NUMBER INFORMATION
COLOR: BLACK

PART#	LOGO STYLE	SUPPLIED
C88E230004T3	NO LOGO	PACKAGED
C88E231004T3	NORTECH LOGO*	PACKAGED

COLOR: GRAY - DISCONTINUED

PART#	LOGO STYLE	SUPPLIED
C88E230005T3	NO LOGO	DISCONTINUED
C88E231005T3	NORTECH LOGO*	DISCONTINUED

* - SPECIAL ORDER ITEM - CONTACT NORTHERN TECHNOLOGIES

CONNECTOR COVER:

1. MATERIAL: THERMOPLASTIC UL94V-0
2. COLOR: BLACK
3. DIMENSIONS: INCHES [MM]
4. TOLERANCE: ±0.015 [0.381]

JACKET INSERT TREE

1. MATERIAL: POLYPROPYLENE HOMOPOLYMER
2. COLOR: BLACK
3. DIMENSIONS: INCHES [MM]
4. TOLERANCE: ±0.010 [0.254]

UNLESS OTHERWISE SPECIFIED

1. ALL DIMENSIONS ARE IN INCHES (MM)
2. DIMENSIONS ARE TYPICAL

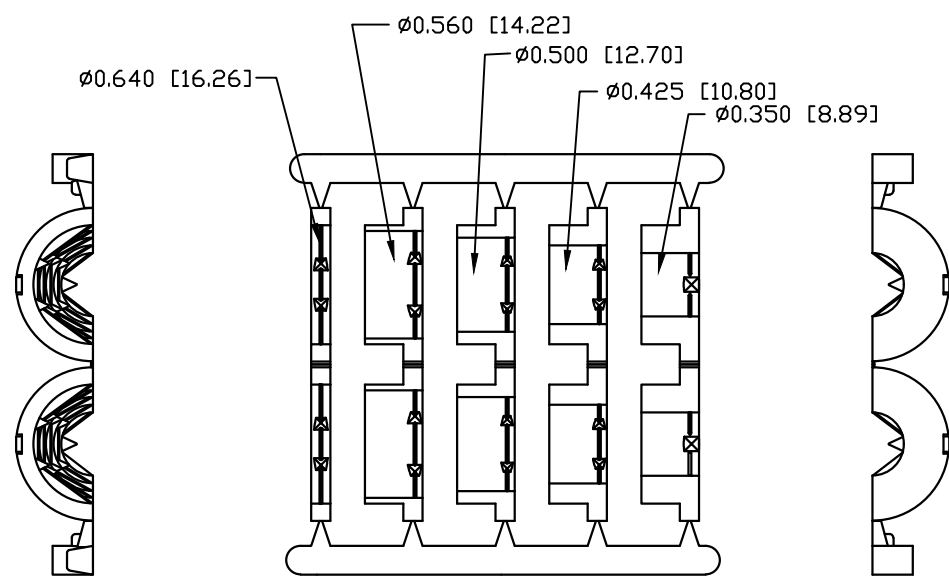
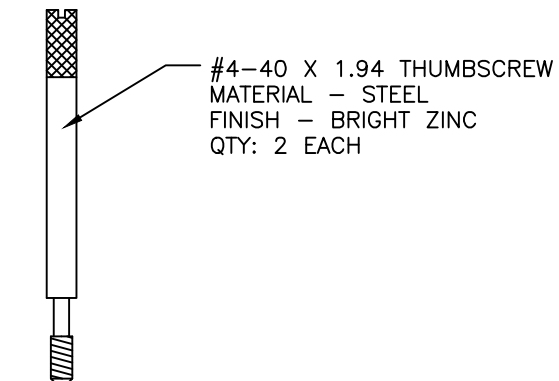
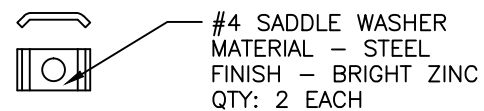
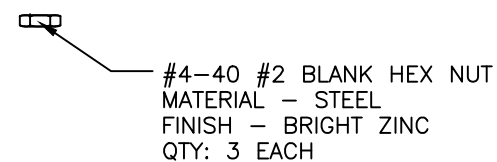
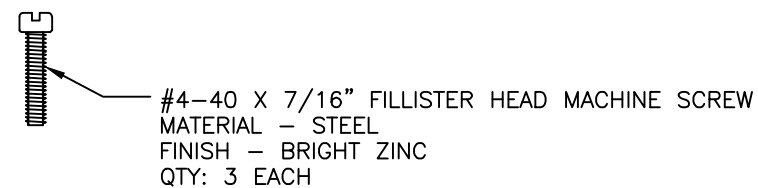
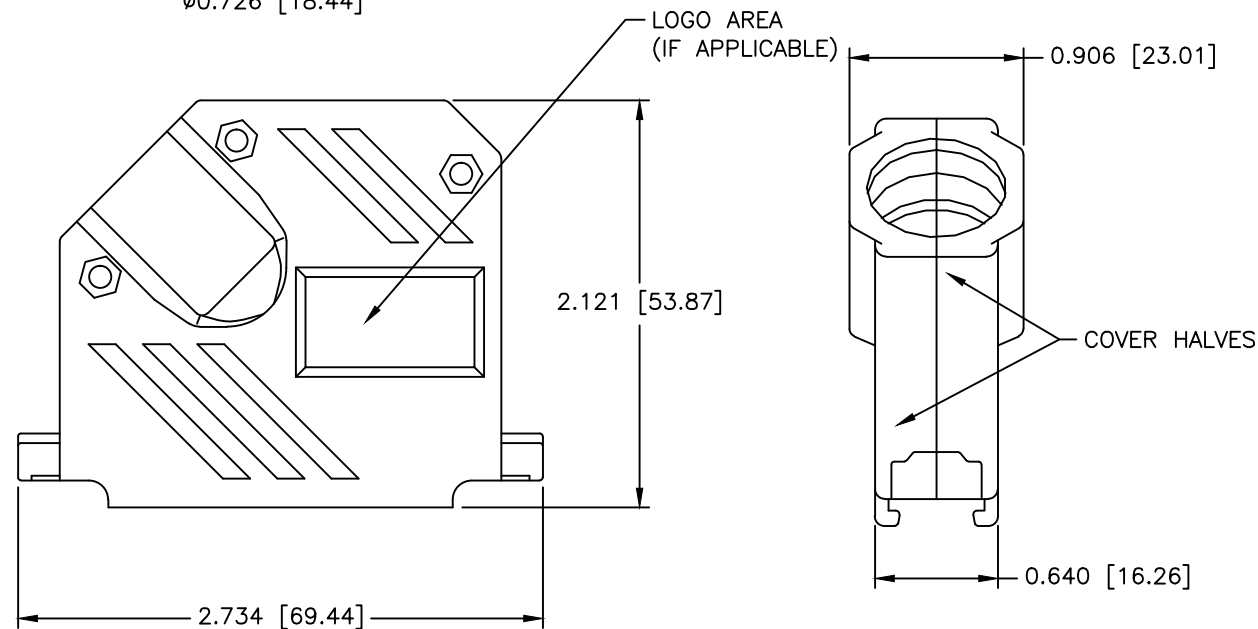
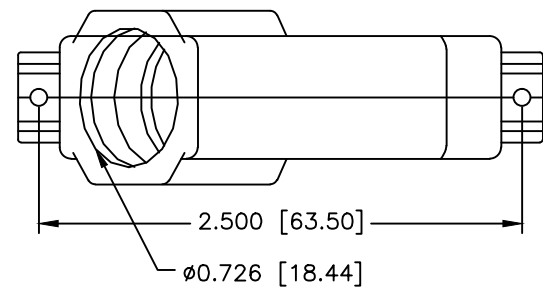
Northern Technologies

THIS DRAWING IS THE PROPERTY OF NORTHERN TECHNOLOGIES AND SHOULD NOT BE REPRODUCED WITHOUT NORTHERN TECHNOLOGIES WRITTEN PERMISSION.

PART NUMBER SEE PART NUMBER INFORMATION

DESCRIPTION CPP 37 45 DEGREE EXIT
TWD PIECE PLASTIC COVER WITH THUMBSCREWS

DRAWN JSD	09-DEC-08	SIZE B	CODE 200_130T3	DWG NO. 0002-200-130T3	REV A
CHECKED SCN	09-DEC-08	SCALE N.T.S.			SHEET 1 OF 1
ISSUED	09-DEC-08				



JACKET INSERT TREE
QTY: 1

THIS IS A CONTROLLED DOCUMENT AND IS SUBJECT TO CHANGE. CONTACT NORTHERN TECHNOLOGIES ENGINEERING FOR THE LATEST REVISION.

REVISIONS				
ZONE	REV	DESCRIPTION	DATE	APPROVED
	A	ECN 0667	09-DEC-08	
	B	ECN 0844	19-FEB-24	



PART NUMBER INFORMATION

COLOR: BLACK

PART#	LOGO STYLE	SUPPLIED
C88E230004T	NO LOGO	PACKAGED
C88E231004T	NORTECH LOGO*	PACKAGED

COLOR: GRAY - DISCONTINUED

PART#	LOGO STYLE	DISCONTINUED
C88E230005T	NO LOGO	DISCONTINUED
C88E231005T	NORTECH LOGO*	DISCONTINUED

* - SPECIAL ORDER ITEM - CONTACT NORTHERN TECHNOLOGIES

CONNECTOR COVER:

- 1.MATERIAL: THERMOPLASTIC UL94V-0
- 2.COLOR: BLACK
- 3.DIMENSIONS: INCHES [MM]
- 4.TOLERANCE: ±0.015 [0.381]

JACKET INSERT TREE

- 1.MATERIAL: POLYPROPYLENE HOMOPOLYMER
- 2.COLOR: BLACK
- 3.DIMENSIONS: INCHES [MM]
- 4.TOLERANCE: ±0.010 [0.254]

UNLESS OTHERWISE SPECIFIED

1. ALL DIMENSIONS ARE IN INCHES (MM)
2. DIMENSIONS ARE TYPICAL

Northern Technologies

THIS DRAWING IS THE PROPERTY OF NORTHERN TECHNOLOGIES AND SHOULD NOT BE REPRODUCED WITHOUT NORTHERN TECHNOLOGIES WRITTEN PERMISSION.

PART NUMBER SEE PART NUMBER INFORMATION
DESCRIPTION CPP 37 45 DEGREE EXIT
TWD PIECE PLASTIC COVER WITH THUMBSCREWS

DRAWN JSD	24-JAN-07	SIZE B	CODE 200_130T	DWG NO. 0002-200-130T	REV B
CHECKED SCN	24-JAN-07	SCALE N.T.S.		SHEET 1 OF 1	
ISSUED	24-JAN-07				