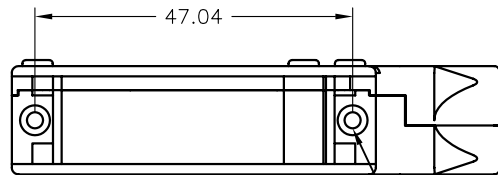
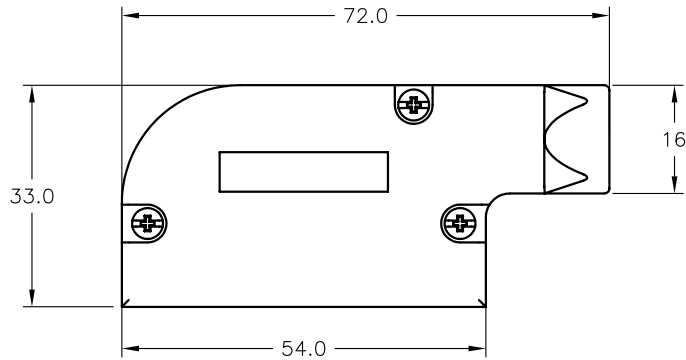
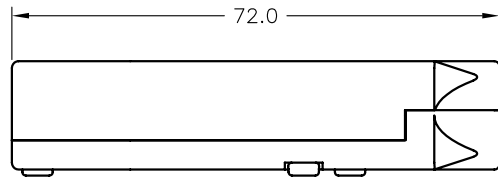
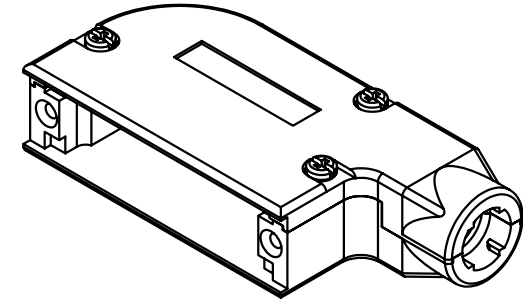
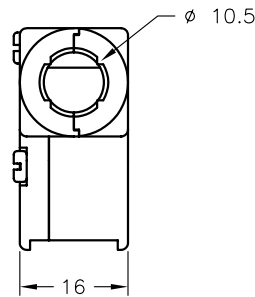


REV	DATE	DESCRIPTION	APP



#4-40 UNC THREAD
CLASS 2B



NOTES:

1. MATERIAL: ZINC ALLOY
2. FINISH: NICKEL OVER COPPER UNDERPLATE
3. DIMENSIONS: MILLIMETERS
4. TOLERANCE: UNLESS OTHERWISE STATED

ANGLES	$\pm 5^\circ$
0.	± 0.5
.0	± 0.3
.00	± 0.2

THIS IS A CONTROLLED DOCUMENT AND IS SUBJECT TO CHANGE. CONTACT NORTHERN TECHNOLOGIES ENGINEERING FOR THE LATEST REVISION.

UNLESS OTHERWISE SPECIFIED		SIGNATURES	DATE	Northern Technologies		
1. ALL DIMENSIONS ARE IN INCHES [MM] 2. DIMENSIONS ARE TYPICAL	DRAWN	JSD	27-MAR-07	PART NUMBER XN30E620002 DESCRIPTION CME 25C 90 DEGREE LP TYPE 2		
	CHECKED	SCN	27-MAR-07			
	ENG			SHEET 1	CODE 7100_256	DWG NO. 7100-500-256
	ISSUED		30-MAY-07	SCALE N.T.S.	SHEET 1 OF 1	

THIS DRAWING IS THE PROPERTY OF NORTHERN TECHNOLOGIES AND SHOULD NOT BE REPRODUCED WITHOUT NORTHERN TECHNOLOGIES WRITTEN PERMISSION.