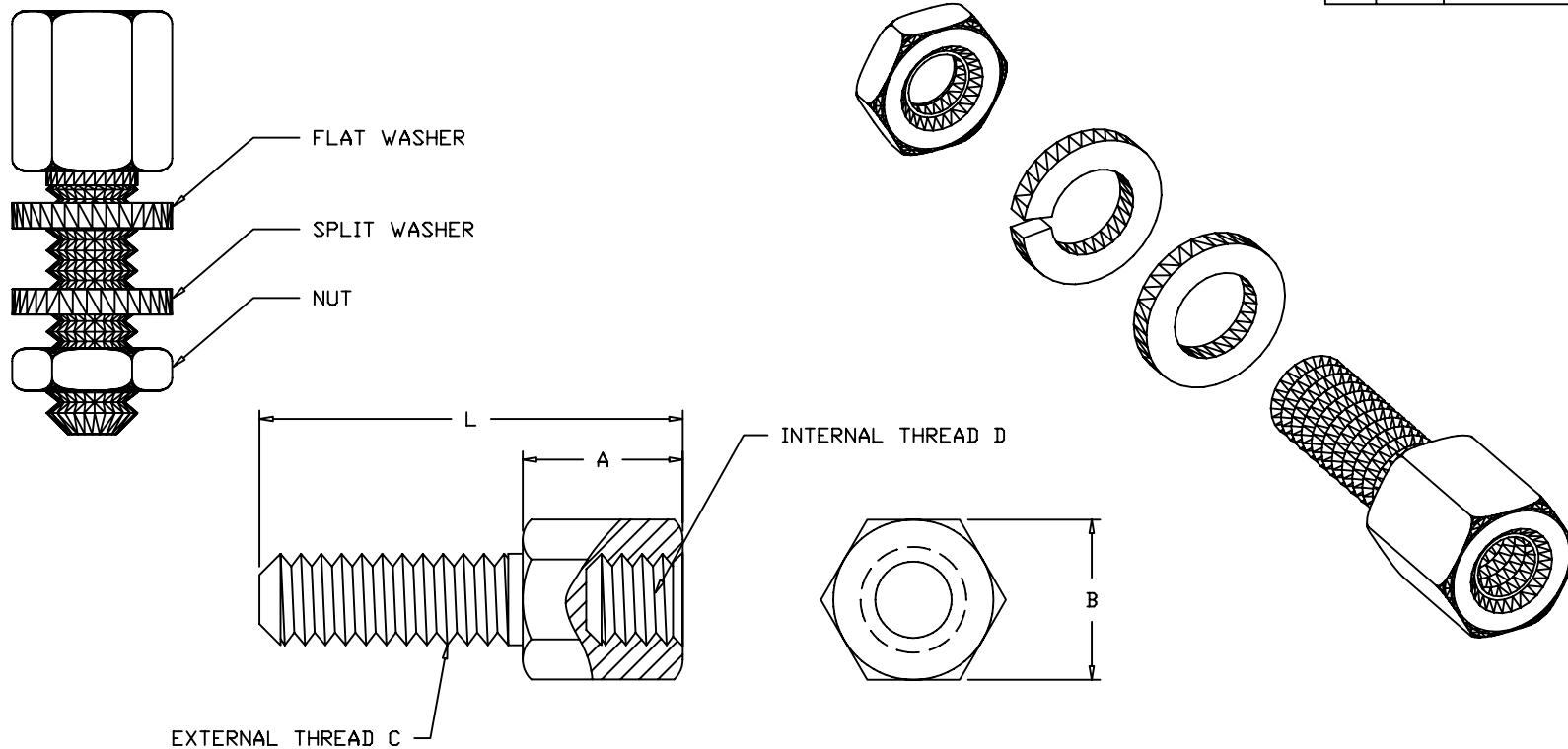


REV	DATE	DESCRIPTION	APP



PART No.	L ±0.012(0.3) (13.0)	A ±0.01(0.2) (4.80)	B ±0.005(0.1) (4.76)	EXTERNAL THREAD C	INTERNAL THREAD D
C89E014009M3	0.512 (13.0)	0.189 (4.80)	0.187 (4.76)	4-40 UNC-2A	M3

NOTES:

1. FEMALE SCREWLOCK MATERIAL: BRASS
2. FEMALE SCREWLOCK FINISH: NICKEL PLATE
3. 4-40 WASHER MATERIAL: STEEL
4. 4-40 WASHER FINISH: NICKEL PLATE
5. 4-40 LOCK WASHER MATERIAL: STEEL
6. 4-40 LOCK WASHER FINISH: NICKEL PLATE
7. 4-40 NUT MATERIAL: STEEL
8. 4-40 NUT FINISH: NICKEL PLATE
9. COMPLIANCE NOTE:

PART MUST BE IN COMPLIANCE TO:
DIRECTIVE 2002/95/EC of 27 January 2003 [RoHS]

C89E014009M3 CONSISTS OF:
2 - LOW PROFILE FEMALE SCREWLOCKS
2 - 4-40 FLAT WASHERS
2 - 4-40 SPLIT WASHERS
2 - 4-40 NUTS

THIS IS A CONTROLLED DOCUMENT AND IS SUBJECT TO CHANGE. CONTACT NORTHERN TECHNOLOGIES ENGINEERING FOR THE LATEST REVISION.

UNLESS OTHERWISE SPECIFIED	SIGNATURES	DATE	Northern Technologies		
1. ALL DIMENSIONS ARE IN INCHES (MM) 2. DIMENSIONS ARE TYPICAL	DRAWN JSD	09-MAR-07	PART NUMBER C89E014009M3 DESCRIPTION FEMALE SCREWLOCK ASSEMBLY [RoHS]		
	CHECKED SCN	09-MAR-07			
	ISSUED	09-MAR-07	SHEET 1	CODE 7100_255	DWG NO. 7100-500-255
			SCALE N.T.S.		SHEET 1 OF 1

THIS DRAWING IS THE PROPERTY OF NORTHERN TECHNOLOGIES AND SHOULD NOT BE REPRODUCED WITHOUT NORTHERN TECHNOLOGIES WRITTEN PERMISSION.