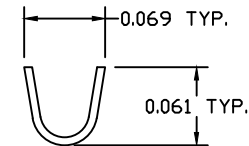
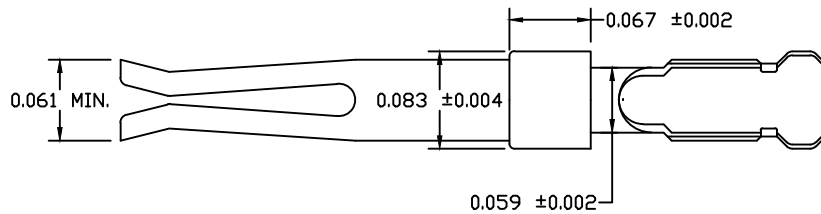
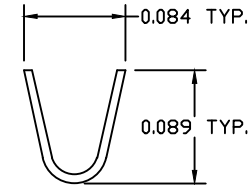
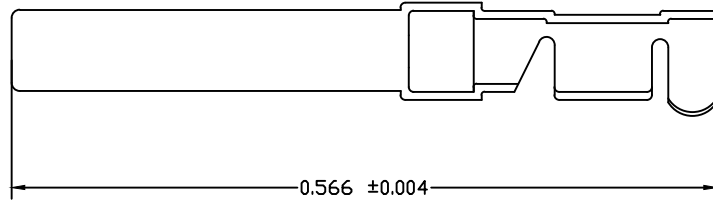


REV	DATE	DESCRIPTION	APP
A	31-MAY-07	ECN 0631	
B	08-DEC-14	ECN 0761	
C	08-JUN-16	ECN 0785	



ORDER INFORMATION
WDCTESX1020AF - 1000 PCS. PER BAG
WDCTESX1420AF - 10,000 PCS. PER BAG

NOTES:

1. MATERIAL: PHOSPHOR BRONZE
2. FINISH MATING SECTION: GOLD FLASH OVER NICKEL
3. FINISH CRIMP SECTION: NICKEL

THIS IS A CONTROLLED DOCUMENT AND IS SUBJECT TO CHANGE. CONTACT NORTHERN TECHNOLOGIES ENGINEERING FOR THE LATEST REVISION.

UNLESS OTHERWISE SPECIFIED	SIGNATURES	DATE	Northern Technologies		THIS DRAWING IS THE PROPERTY OF NORTHERN TECHNOLOGIES AND SHOULD NOT BE REPRODUCED WITHOUT NORTHERN TECHNOLOGIES WRITTEN PERMISSION.
1. DIMENSIONS IN INCHES [MM] 2. TOLERANCE UNLESS OTHERWISE SPECIFIED .XXX ± .005 [0.127] .XX ± .02 [0.508] .X ± .03 [0.762] FRACT. ± 1/32 ANGULAR ± 1/2°	DRAWN JSD	25-NOV-05	PART NUMBER WDCTESX1020AF / WDCTESX1420AF		DESCRIPTION FEMALE CONTACT LOOSE PIECE
	CHECKED SCN	25-NOV-05			
	ISSUED	25-NOV-05	SHEET 1	CODE 7100_251	DWG NO. 7100-500-251
			SCALE N.T.S.	SHEET 1 OF 1	