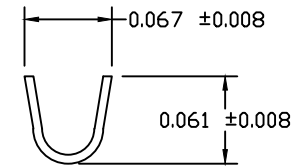
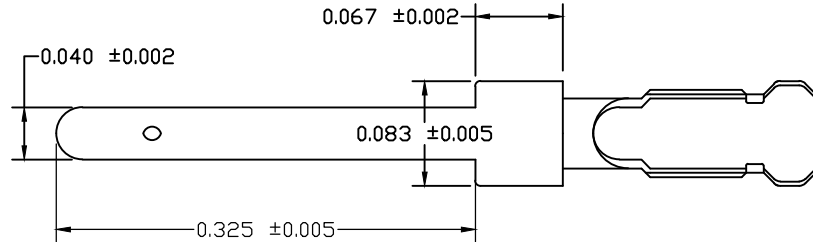
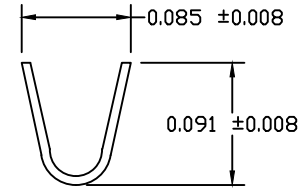
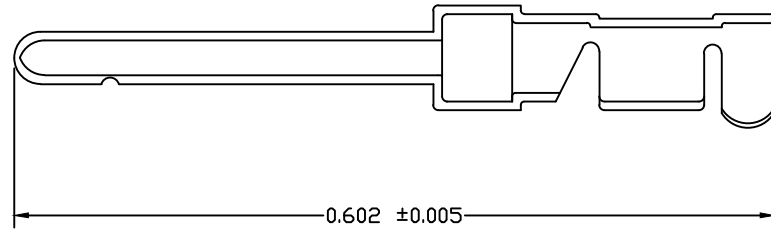


REV	DATE	DESCRIPTION	APP
A	31-MAY-07	ECN 0633	
B	08-DEC-14	ECN 0761	
C	10-FEB-15	ECN 0765	
D	08-JUN-16	ECN 0785	



ORDER INFORMATION
WDCTEPX1020AF - 1000 PCS. PER BAG
WDCTEPX1420AF - 10,000 PCS. PER BAG

- NOTES:
1. MATERIAL: PHOSPHOR BRONZE
 2. FINISH MATING SECTION: GOLD FLASH OVER NICKEL
 3. FINISH CRIMP SECTION: NICKEL

UNLESS OTHERWISE SPECIFIED	SIGNATURES	DATE	Northern Technologies		THIS DRAWING IS THE PROPERTY OF NORTHERN TECHNOLOGIES AND SHOULD NOT BE REPRODUCED WITHOUT NORTHERN TECHNOLOGIES WRITTEN PERMISSION.
	DRAWN JSD	25-NOV-05	PART NUMBER WDCTEPX1020AF / WDCTEPX1420AF		
1. DIMENSIONS IN INCHES 2. UNLESS OTHERWISE SPECIFIED .XXX ± .005 .XX ± .02 .X ± .03 FRACT. ± 1/32 ANGULAR ± 1/2°	CHECKED SCN	25-NOV-05	DESCRIPTION MALE CONTACT LOOSE PIECE		
	ISSUED	25-NOV-05	SHEET 1	CODE 7100_250	DWG NO. 7100-500-250
			SCALE N.T.S.		SHEET 1 OF 1

THIS IS A CONTROLLED DOCUMENT AND IS SUBJECT TO CHANGE. CONTACT NORTHERN TECHNOLOGIES ENGINEERING FOR THE LATEST REVISION.