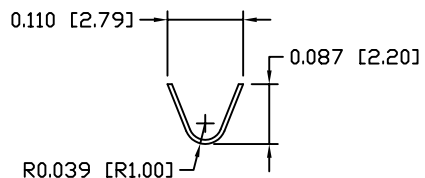
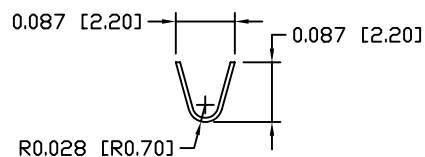


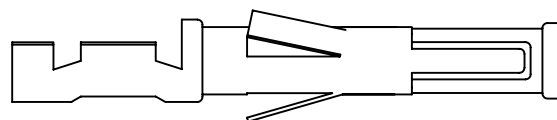
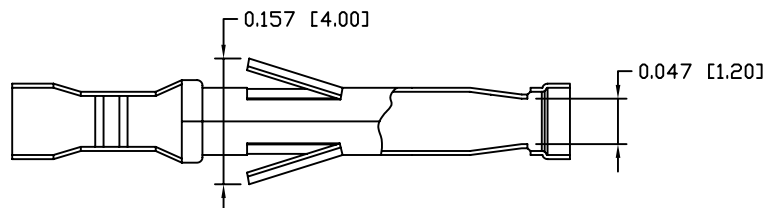
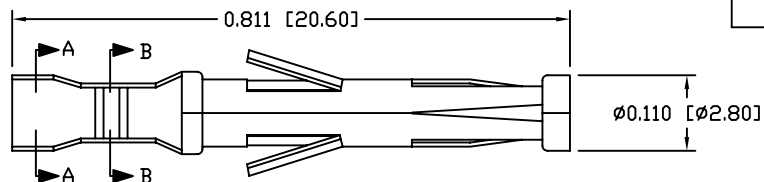
REV	DATE	DESCRIPTION	APP



SECTION A-A



SECTION B-B



SIDE VIEW

NOTES:

1. MATERIAL: COPPER ALLOY
2. MATERIAL THICKNESS: 0.012 [0.30] TYPICAL
3. FINISH: 3µi" TO 5µi" GOLD OVER NICKEL UNDERPLATE
4. CONTACT RATING: 7 AMPS
5. CONTACT RESISTANCE: 10 MILLIOHM MAX. (MATED)
6. WIRE RANGE: 24 TO 28 AWG.
7. DIMENSIONS IN INCHES [MM]
8. TOLERANCE: ±0.005 [0.127] UNLESS NOTED

THIS IS A CONTROLLED DOCUMENT AND IS SUBJECT TO CHANGE. CONTACT NORTHERN TECHNOLOGIES ENGINEERING FOR THE LATEST REVISION.

UNLESS OTHERWISE SPECIFIED	SIGNATURES	DATE	Northern Technologies		
1. ALL DIMENSIONS ARE IN INCHES (MM) 2. DIMENSIONS ARE TYPICAL	DRAWN JSD	07-FEB-07	PART NUMBER A28E610501 DESCRIPTION V.35 CONTACT FEMALE (LOOSE)		
	CHECKED SCN	07-FEB-07			
	ENG		SHEET 1	CODE 7100_174	DWG NO. 7100-500-174
	ISSUED	07-FEB-07	SCALE N.T.S.	SHEET 1 OF 1	

THIS DRAWING IS THE PROPERTY OF NORTHERN TECHNOLOGIES AND SHOULD NOT BE REPRODUCED WITHOUT NORTHERN TECHNOLOGIES WRITTEN PERMISSION.