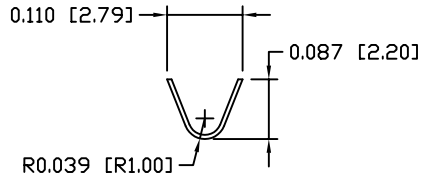
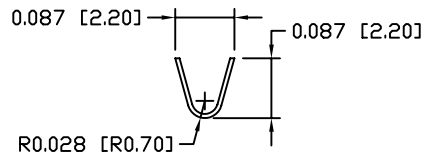


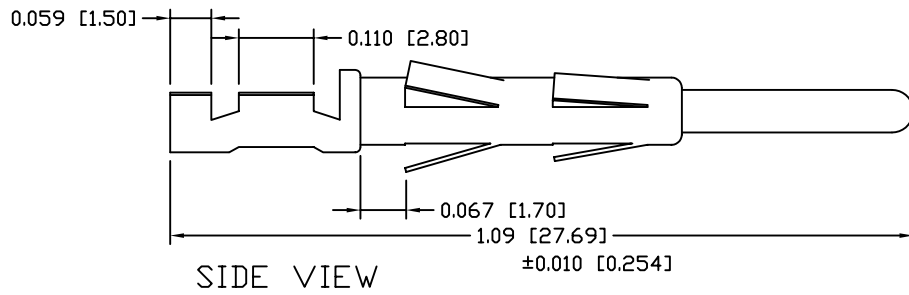
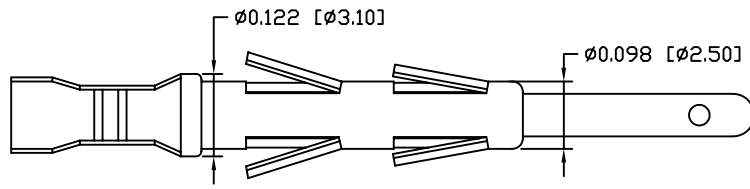
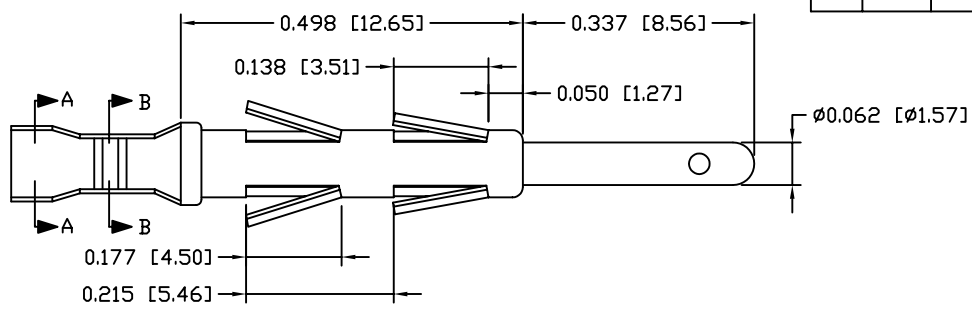
REV	DATE	DESCRIPTION	APP



SECTION A-A



SECTION B-B



SIDE VIEW

- NOTES:
1. MATERIAL: COPPER ALLOY
 2. MATERIAL THICKNESS: 0.012 [0.30] TYPICAL
 3. FINISH: 3 μ i* TO 5 μ i* GOLD OVER NICKEL UNDERPLATE
 4. CONTACT RATING: 7 AMPS
 5. CONTACT RESISTANCE: 10 MILLIOHM MAX. (MATED)
 6. WIRE RANGE: 24 TO 28 AWG.
 7. DIMENSIONS IN INCHES [MM]
 8. TOLERANCE: ± 0.005 [0.127] UNLESS NOTED

THIS IS A CONTROLLED DOCUMENT AND IS SUBJECT TO CHANGE. CONTACT NORTHERN TECHNOLOGIES ENGINEERING FOR THE LATEST REVISION.

UNLESS OTHERWISE SPECIFIED 1. ALL DIMENSIONS ARE IN INCHES [MM] 2. DIMENSIONS ARE TYPICAL	SIGNATURES		DATE		Northern Technologies PART NUMBER A28E610500 DESCRIPTION V.35 CONTACT MALE (LOOSE)		THIS DRAWING IS THE PROPERTY OF NORTHERN TECHNOLOGIES AND SHOULD NOT BE REPRODUCED WITHOUT NORTHERN TECHNOLOGIES WRITTEN PERMISSION.	
	DRAWN	JSD	07-FEB-07					
	CHECKED	SCN	07-FEB-07		SHEET	CODE	DWG NO.	
	ENG				1	7100_173	7100-500-173	
	ISSUED		07-FEB-07	SCALE	N.T.S.		SHEET	1 OF 1