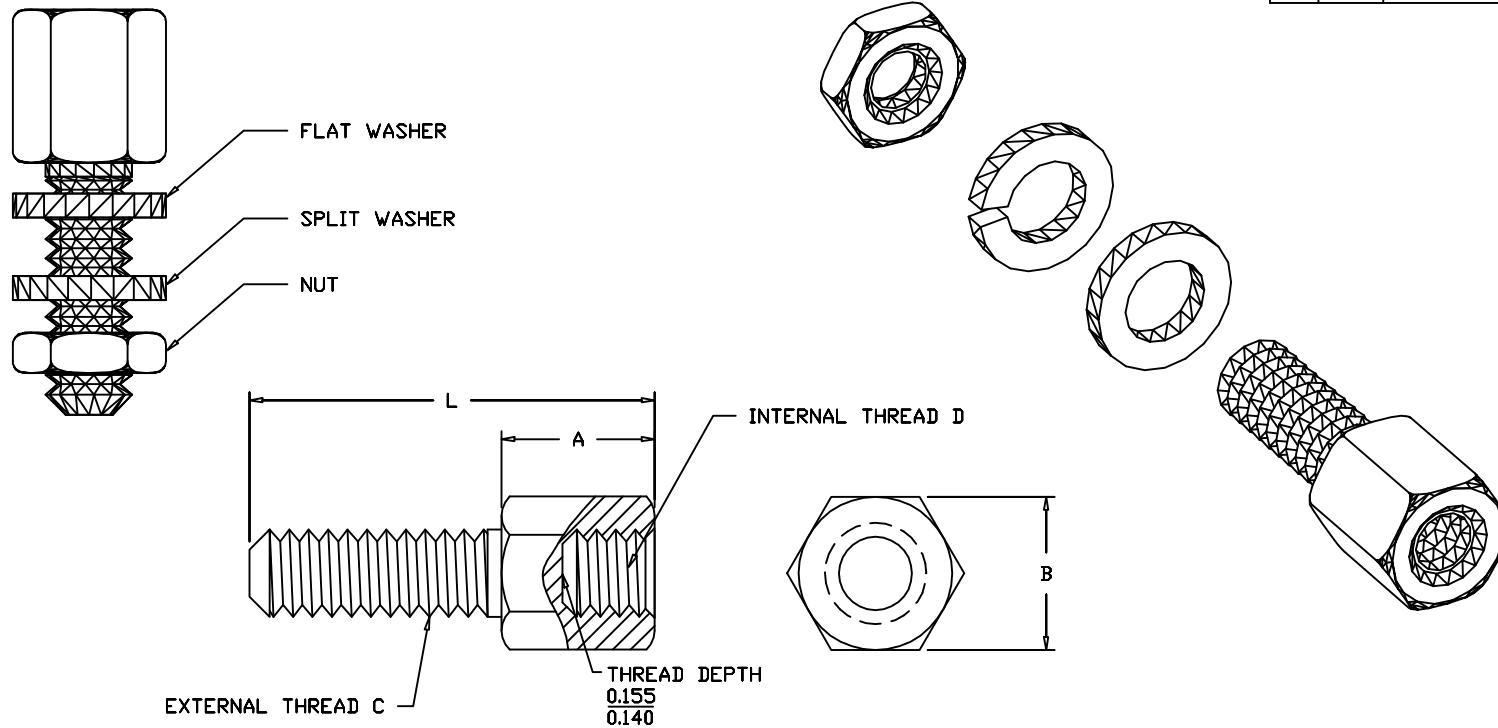


REV	DATE	DESCRIPTION	APP



PART No.	L ±0.012(0.3)	A ±0.01(0.2)	B ±0.005(0.1)	EXTERNAL THREAD C	INTERNAL THREAD D
C89E014009	0.512 (13.0)	0.189 (4.80)	0.187 (4.76)	4-40 UNC-2A	4-40 UNC-2B

NOTES:

1. FEMALE SCREWLOCK MATERIAL: BRASS
2. FEMALE SCREWLOCK FINISH: NICKEL PLATE
3. 4-40 WASHER MATERIAL: STEEL
4. 4-40 WASHER FINISH: NICKEL PLATE
5. 4-40 LOCK WASHER MATERIAL: STEEL
6. 4-40 LOCK WASHER FINISH: NICKEL PLATE
7. 4-40 NUT MATERIAL: STEEL
8. 4-40 NUT FINISH: NICKEL PLATE
9. COMPLIANCE NOTE:

PART MUST BE IN COMPLIANCE TO:
DIRECTIVE 2002/95/EC of 27 January 2003 [RoHS]

C89E014009 CONSISTS OF:
2 - LOW PROFILE FEMALE SCREWLOCKS
2 - 4-40 FLAT WASHERS
2 - 4-40 SPLIT WASHERS
2 - 4-40 NUTS

THIS IS A CONTROLLED DOCUMENT AND IS
SUBJECT TO CHANGE. CONTACT NORTHERN
TECHNOLOGIES ENGINEERING FOR THE
LATEST REVISION.

UNLESS OTHERWISE SPECIFIED	SIGNATURES	DATE	Northern Technologies		
1. ALL DIMENSIONS ARE IN INCHES (MM) 2. DIMENSIONS ARE TYPICAL	DRAWN JSD	04-NOV-05	PART NUMBER C89E014009 DESCRIPTION FEMALE SCREWLOCK ASSEMBLY [RoHS]		
	CHECKED SCN	04-NOV-05			
	ENG		SHEET 1	CODE 7100_153	DWG NO. 7100-500-153
	ISSUED	04-NOV-05	SCALE N.T.S.	SHEET 1 OF 1	

THIS DRAWING IS THE PROPERTY OF
NORTHERN TECHNOLOGIES AND SHOULD
NOT BE REPRODUCED WITHOUT NORTHERN
TECHNOLOGIES WRITTEN PERMISSION.