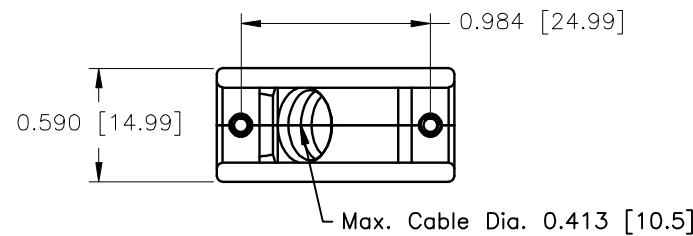
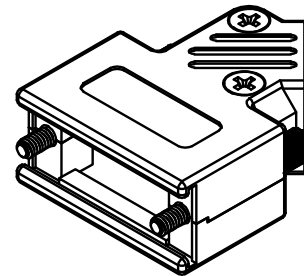
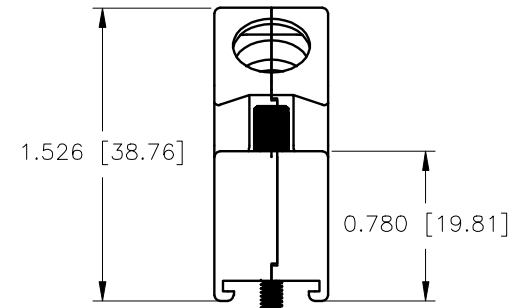
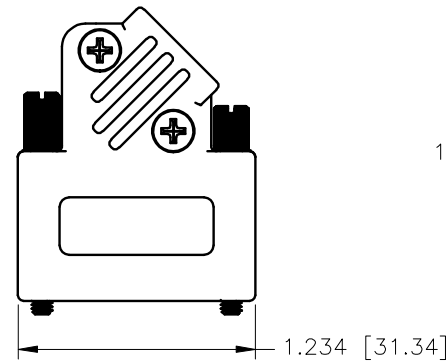


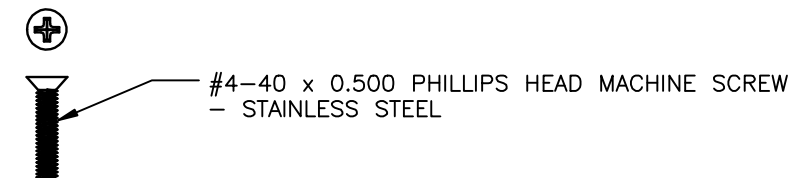
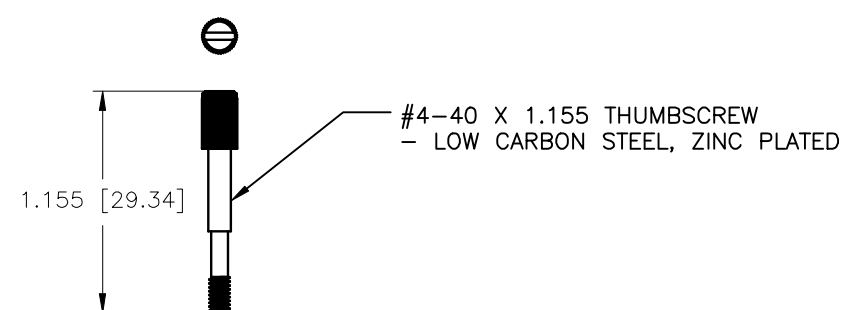
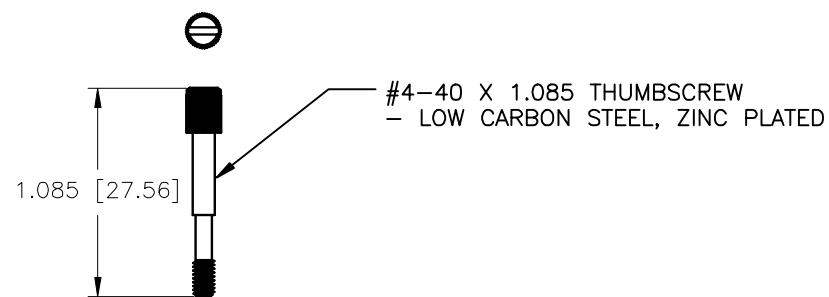
REVISIONS				
ZONE	REV	DESCRIPTION	DATE	APPROVED
	A	ECN 0656	07-JUL-08	
	B	ECN 0669	21-JAN-09	
	C	ECN 0731	02-SEP-13	
	D	ECN 0755	12-NOV-14	
	E	ECN 0835	14-APR-22	



CONNECTOR COVER:
 1.MATERIAL: ZINC ALLOY
 2.FINISH: SEE ORDER INFORMATION (SHEET 2)
 3.DIMENSIONS: INCHES [MM]
 4.TOLERANCE: ±0.015 [0.381]

KIT INCLUDES:
 1 - COVER TOP (FOR FINISH SEE SHEET 2)
 1 - COVER BOTTOM (FOR FINISH SEE SHEET 2)
 1 - #4-40 X 1.085 THUMBSCREW
 1 - #4-40 X 1.155 THUMBSCREW
 2 - #4-40 PHILLIPS HEAD MACHINE SCREW
 1 - COMPRESSION INSERT OR JACKET INSERT
 (SEE SHEET 2 FOR CORRESPONDING PART NUMBER)

Max. Cable Dia. 0.413 [10.5]

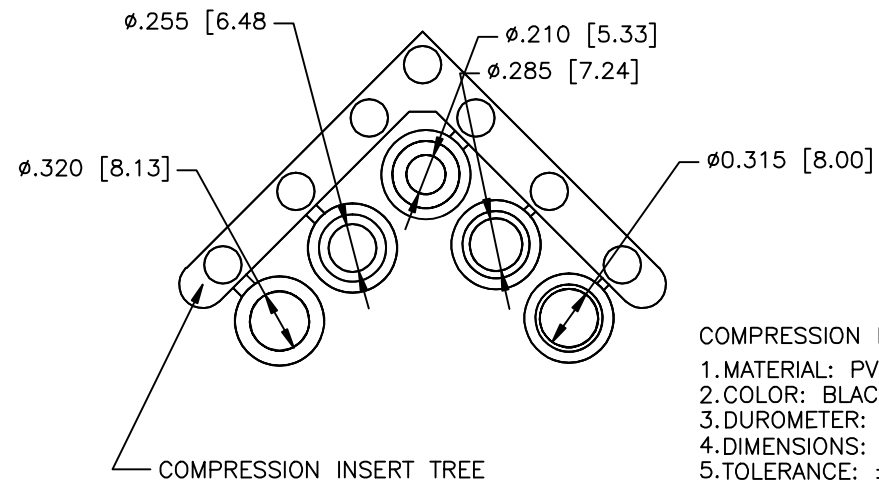


THIS IS A CONTROLLED DOCUMENT AND IS SUBJECT TO CHANGE. CONTACT NORTHERN TECHNOLOGIES ENGINEERING FOR THE LATEST REVISION.

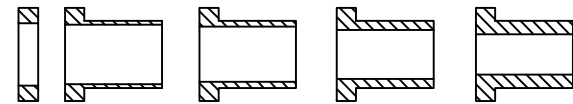
UNLESS OTHERWISE SPECIFIED 1. ALL DIMENSIONS ARE IN INCHES [MM] 2. DIMENSIONS ARE TYPICAL		Northern Technologies <small>THIS DRAWING IS THE PROPERTY OF NORTHERN TECHNOLOGIES AND SHOULD NOT BE REPRODUCED WITHOUT NORTHERN TECHNOLOGIES WRITTEN PERMISSION.</small>		
DRAWN Luis C. 31-MAR-08		PART NUMBER SEE ORDER INFORMATION DESCRIPTION CM 09 45D EXIT w/THUMBSCREWS		
CHECKED JSD 31-MAR-08	ISSUED 01-APR-08	SIZE B	CODE 200_239	DWG NO. 0002-200-239
		SCALE NTS	SHEET 1 OF 2	

REVISIONS

ZONE	REV	DESCRIPTION	DATE	APPROVED



COMPRESSION INSERT TREE
 1.MATERIAL: PVC UL94V-0
 2.COLOR: BLACK
 3.DUROMETER: 80 ±3 TYPE A PER ASTM D2240
 4.DIMENSIONS: INCHES [MM]
 5.TOLERANCE: ±0.020 [0.508]

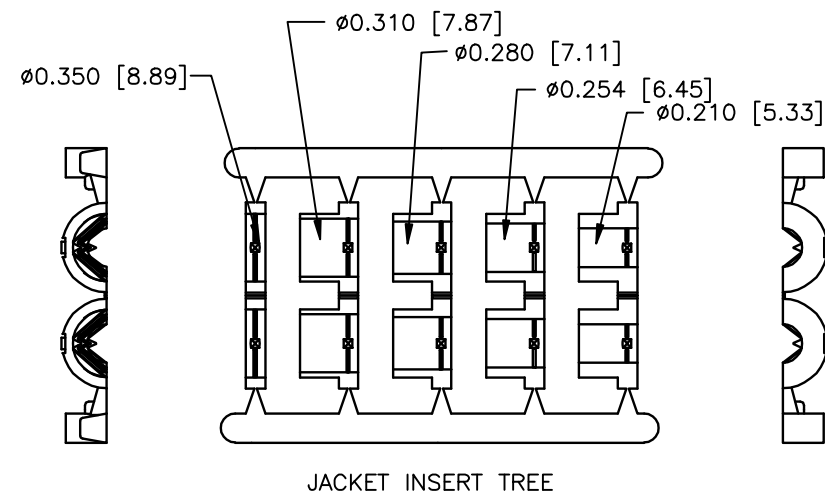


NO LOGO



PART NUMBER INFORMATION

PART#	FINISH	STRAIN RELIEF SYSTEM	DESCRIPTION	SUPPLIED
NA95E200000S	NICKEL	JACKET INSERT TREE	NOLOGO TOP	BULK
NA95E200100	NICKEL	JACKET INSERT TREE	BOTTOM	BULK
N95E200000S	NICKEL	JACKET INSERT TREE	NOLOGO	PACKAGED
NA95E200000	NICKEL	COMPRESSION INSERT TREE	NOLOGO TOP	BULK
NA95E200100	NICKEL	COMPRESSION INSERT TREE	BOTTOM	BULK
N95E200000	NICKEL	COMPRESSION INSERT TREE	NOLOGO	PACKAGED
A95E200000	ZINC	COMPRESSION INSERT TREE	NO LOGO TOP	OBSOLETE
A95E200100	ZINC	COMPRESSION INSERT TREE	BOTTOM	OBSOLETE
C95E200000	ZINC	COMPRESSION INSERT TREE	NO LOGO	OBSOLETE
A95E200000S	ZINC	JACKET INSERT TREE	NO LOGO TOP	OBSOLETE
A95E200100	ZINC	JACKET INSERT TREE	BOTTOM	OBSOLETE
C95E200000S	ZINC	JACKET INSERT TREE	NO LOGO	OBSOLETE



JACKET INSERT TREE
 1.MATERIAL: POLYPROPYLENE UL94HB
 2.COLOR: BLACK
 3.DIMENSIONS: INCHES [MM]
 4.TOLERANCE: ±0.010 [0.254]

THIS IS A CONTROLLED DOCUMENT AND IS SUBJECT TO CHANGE. CONTACT NORTHERN TECHNOLOGIES ENGINEERING FOR THE LATEST REVISION.

UNLESS OTHERWISE SPECIFIED

- ALL DIMENSIONS ARE IN INCHES [MM]
- DIMENSIONS ARE TYPICAL

Northern Technologies

THIS DRAWING IS THE PROPERTY OF NORTHERN TECHNOLOGIES AND SHOULD NOT BE REPRODUCED WITHOUT NORTHERN TECHNOLOGIES' WRITTEN PERMISSION.

PART NUMBER SEE ORDER INFORMATION
 DESCRIPTION CM 09 45D EXIT w/THUMBSCREWS

DRAWN Luis C.	31-MAR-08	SIZE B	CODE 200_239	DWG NO. 0002-200-239	REV
CHECKED JSD	31-MAR-08	SCALE NTS	SHEET 2 OF 2		
ISSUED	01-APR-08				