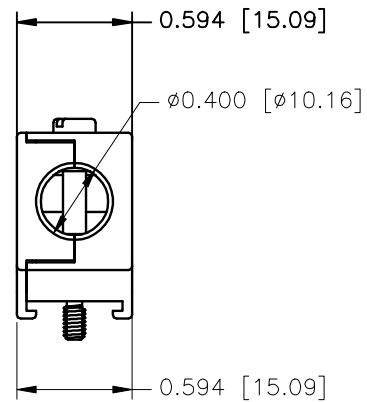
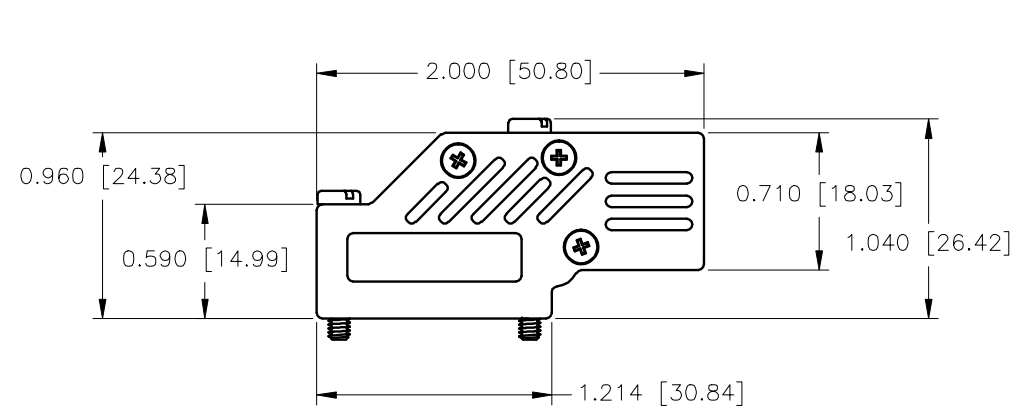


REVISIONS				
ZONE	REV	DESCRIPTION	DATE	APPROVED

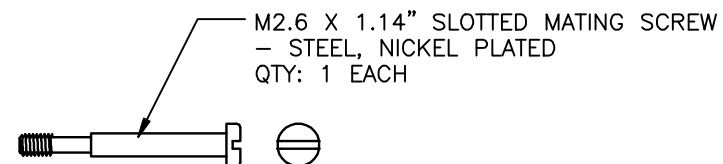
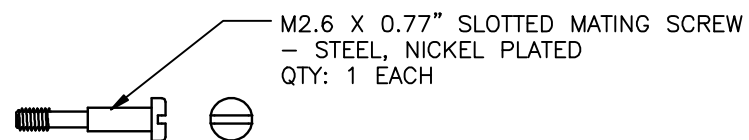
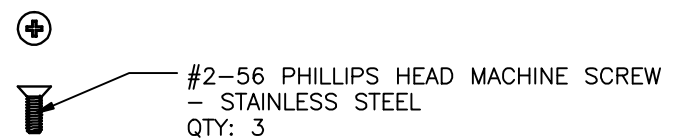
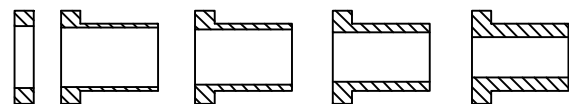
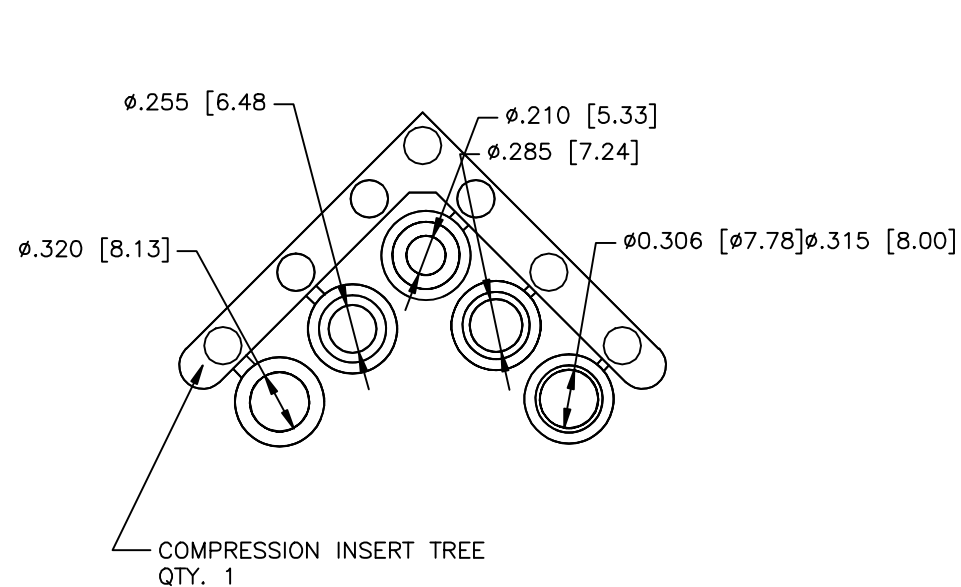
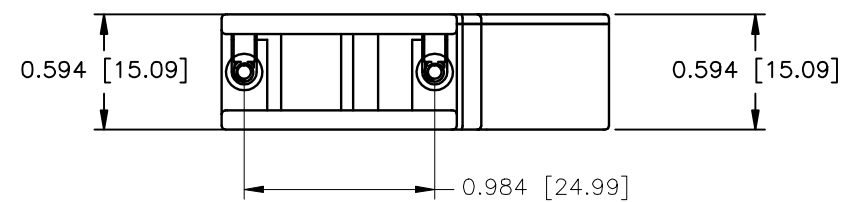


NO LOGO



PART NUMBER INFORMATION

PART#	LOGO STYLE	SUPPLIED
NA30E900000M26	NO LOGO TOP COVER	BULK
NA30E900100	BOTTOM COVER	BULK
N30E900000M26	NO LOGO	PACKAGED



CONNECTOR COVER:

- 1.MATERIAL: ZINC ALLOY
- 2.FINISH: NICKEL PLATING PER NTC SPECIFICATION N/T 000400
- 3.DIMENSIONS: INCHES [MM]
- 4.TOLERANCE: ±0.015 [0.381]

COMPRESSION INSERT TREE

- 1.MATERIAL: THERMOPLASTIC
- 2.COLOR: BLACK
- 3.DUROMETER: 75 ±5 TYPE A PER ASTM D2240
- 4.DIMENSIONS: INCHES [MM]
- 5.TOLERANCE: ±0.020 [0.508]

THIS IS A CONTROLLED DOCUMENT AND IS SUBJECT TO CHANGE. CONTACT NORTHERN TECHNOLOGIES ENGINEERING FOR THE LATEST REVISION.

UNLESS OTHERWISE SPECIFIED		Northern Technologies		
1. ALL DIMENSIONS ARE IN INCHES (MM)		PART NUMBER SEE PART NUMBER INFORMATION		
2. DIMENSIONS ARE TYPICAL		DESCRIPTION CM 09 90 DEGREE ULTRA LOW PROFILE WITH M2.6 MATING SCREWS		
DRAWN JSD	16-JAN-14	SIZE B	CODE 200_169M26	DWG NO. 0002-200-169M26
CHECKED SCN	16-JAN-14	REV		
ISSUED	16-JAN-14	SCALE N.T.S.	SHEET 1 OF 1	