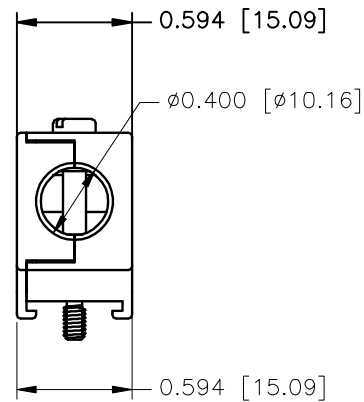
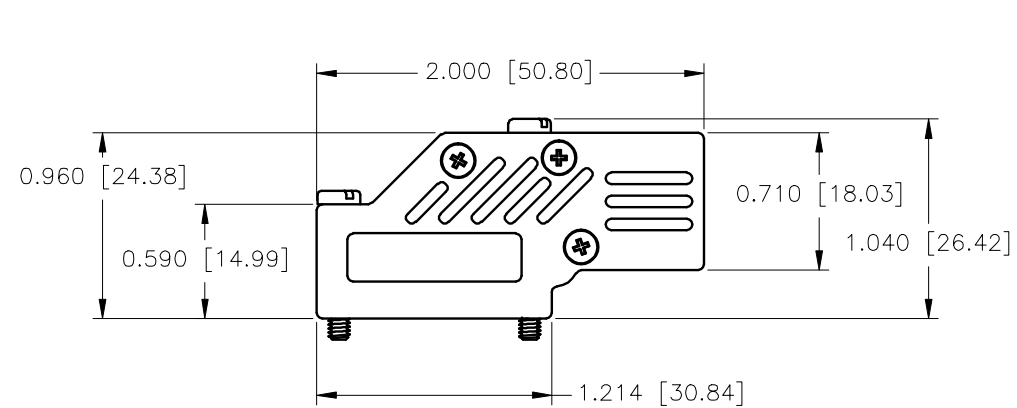


REVISIONS				
ZONE	REV	DESCRIPTION	DATE	APPROVED
	A	ECN 0755	12-NOV-14	
	B	ECN 0795	02-JAN-17	

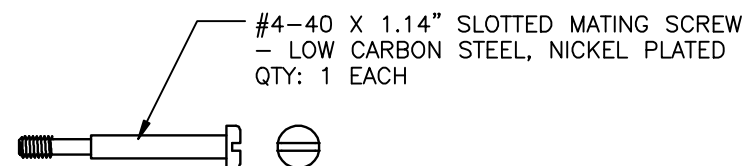
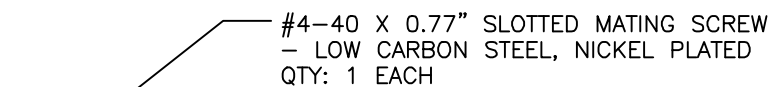
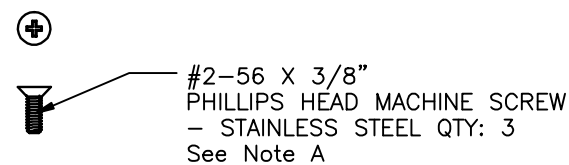
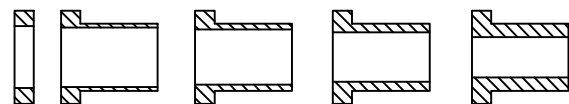
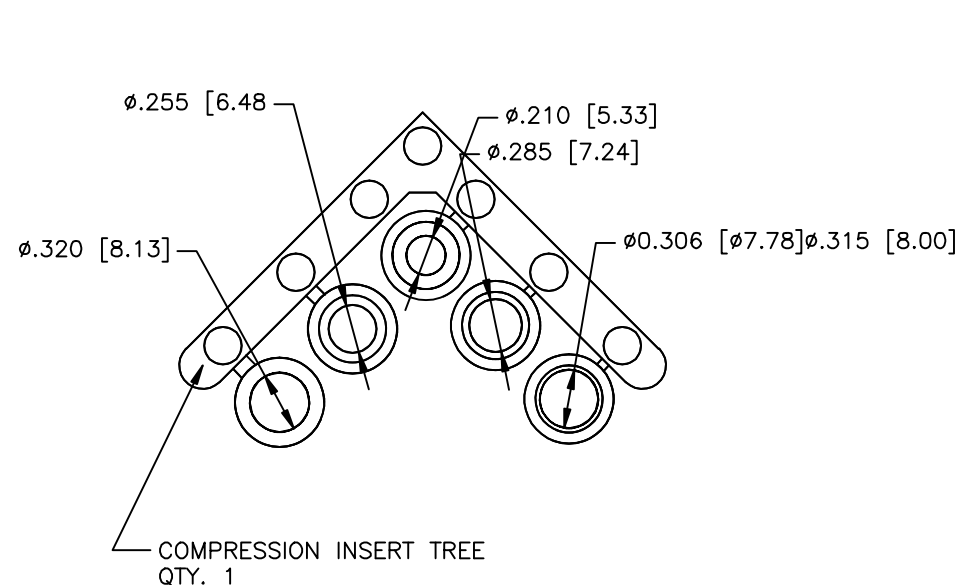
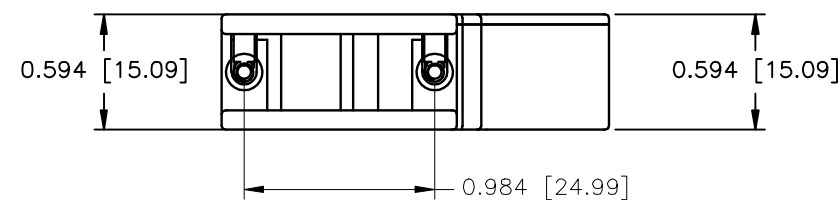


NO LOGO



PART NUMBER INFORMATION

PART#	LOGO STYLE	SUPPLIED
NA30E900000	NO LOGO TOP COVER	BULK
NA30E900100	BOTTOM COVER	BULK
N30E900000	NO LOGO	PACKAGED



Note A: 3 PCS. #2-56 x 7/16" PHILLIPS HEAD MACHINE SCREW
MAY BE SUBSTITUTED IN PLACE OF 3 PCS. #2-56 X 3/8"
PHILLIPS HEAD MACHINE SCREW.

CONNECTOR COVER:

- 1.MATERIAL: ZINC ALLOY
- 2.FINISH: NICKEL PLATING PER NTC SPECIFICATION N/T 000400
- 3.DIMENSIONS: INCHES [MM]
- 4.TOLERANCE: ±0.015 [0.381]

COMPRESSION INSERT TREE

- 1.MATERIAL: THERMOPLASTIC
- 2.COLOR: BLACK
- 3.DUROMETER: 75 ±5 TYPE A PER ASTM D2240
- 4.DIMENSIONS: INCHES [MM]
- 5.TOLERANCE: ±0.020 [0.508]

THIS IS A CONTROLLED DOCUMENT AND IS
SUBJECT TO CHANGE. CONTACT NORTHERN
TECHNOLOGIES ENGINEERING FOR THE
LATEST REVISION.

UNLESS OTHERWISE SPECIFIED 1. ALL DIMENSIONS ARE IN INCHES (MM) 2. DIMENSIONS ARE TYPICAL		Northern Technologies		
DRAWN JSD		PART NUMBER SEE PART NUMBER INFORMATION		
CHECKED SCN		DESCRIPTION CM 09 90 DEGREE ULTRA LOW PROFILE		
ISSUED		SIZE B	CODE 200_169	DWG NO. 0002-200-169
02-JAN-06		SCALE 1:1		REV SHEET 1 OF 1