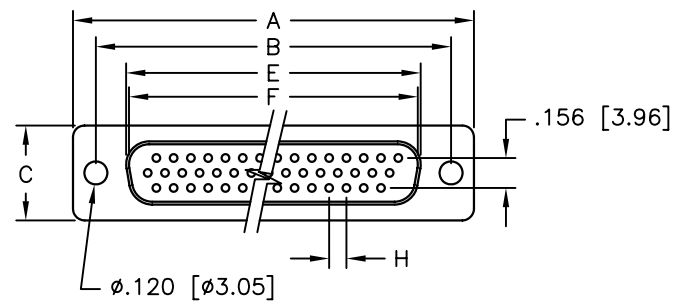
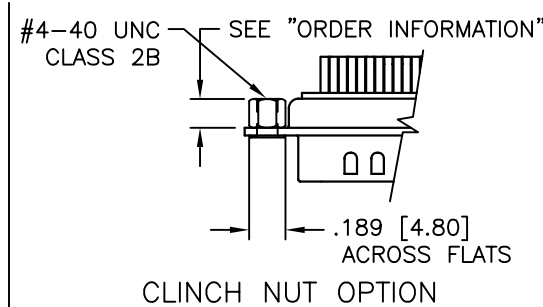
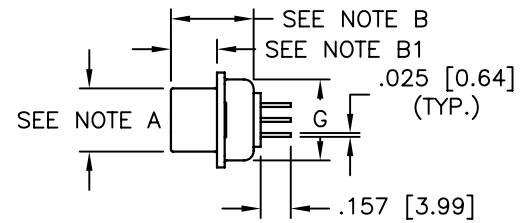


NOTE A: 15, 26, 44 & 62 MALE: 0.327 [8.30]
 15, 26, 44 & 62 FEMALE: 0.311 [7.90]
 NOTE B: 15, 26, 44 & 62 MALE: 0.431 [10.95]
 15, 26, 44 & 62 FEMALE: 0.423 [10.75]
 NOTE B1: 15, 26, 44 & 62 MALE: 0.240 [6.10]
 15, 26, 44 & 62 FEMALE: 0.232 [5.90]



15 THROUGH 62 POSITION

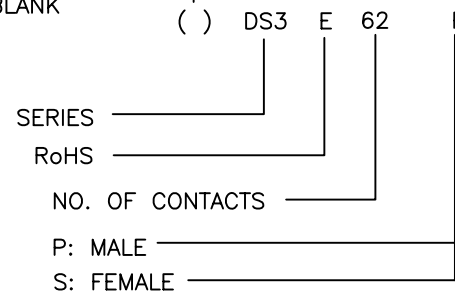


REVISIONS				
ZONE	REV	DESCRIPTION	DATE	APPROVED
	A	ECN 0619	25-AUG-06	
	B	ECN 0637	27-SEP-07	
	C	ECN 0639	05-DEC-07	

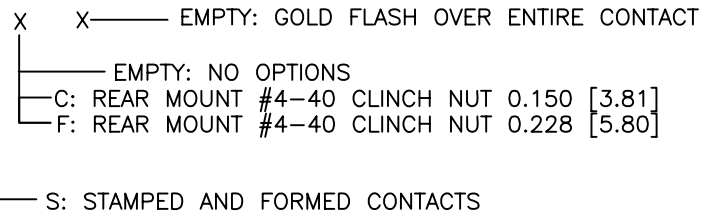
No. of Contacts	Shell Size	DIMENSIONS INCHES [MM]							
		A	B	C	D	E Max. Female	F Min. Male	G	H
15	E(9)	1.213 [30.81]	0.984 [24.99]	0.494 [12.55]	0.759 [19.28]	0.643 [16.33]	0.666 [16.92]	0.422 [10.72]	0.090 [2.29]
26	A(15)	1.541 [39.14]	1.310 [33.27]	0.494 [12.55]	1.089 [27.65]	0.971 [24.66]	0.994 [25.25]	0.422 [10.72]	0.090 [2.29]
44	B(25)	2.088 [53.04]	1.850 [46.99]	0.494 [12.55]	1.626 [41.30]	1.511 [38.38]	1.534 [38.96]	0.422 [10.72]	0.090 [2.29]
62	C(37)	2.730 [69.34]	2.500 [63.50]	0.494 [12.55]	2.261 [57.44]	2.159 [54.84]	2.182 [55.42]	0.422 [10.72]	0.095 [2.41]
78	D(50)	2.638 [67.00]	2.402 [61.00]	0.602 [15.30]	2.169 [55.10]	2.056 [52.20]	2.079 [52.81]	0.527 [13.40]	0.095 [2.41]

ORDER INFORMATION

FACTORY DESIGNATOR
 LEAVE BLANK



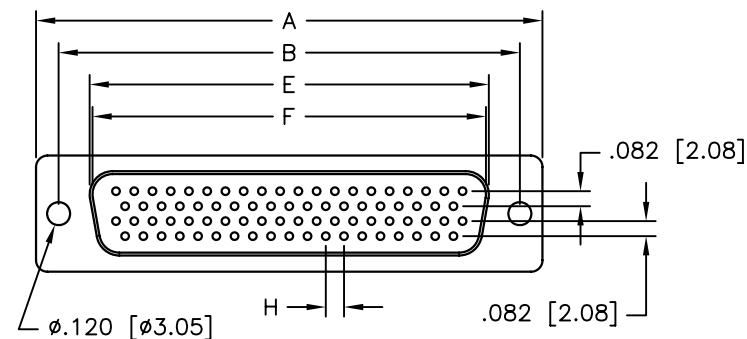
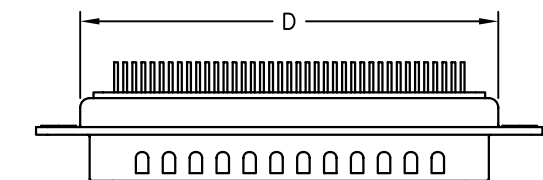
CONTACT FINISH:



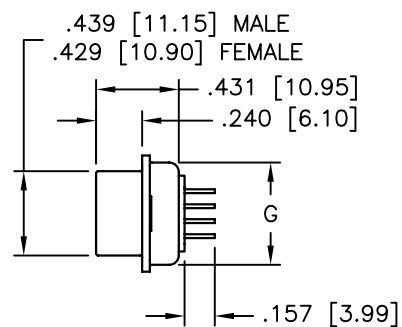
TE: TIN PLATED WITH
 GROUNDING INDENTS
 (MALE ONLY)
 T: TIN PLATED NO
 GROUNDING INDENTS
 (FEMALE ONLY)

NOTES:

- SHELL MATERIAL: STEEL
- SHELL FINISH: SEE ORDER INFORMATION
- INSULATOR MATERIAL: THERMOPLASTIC UL94V-0
- INSULATOR COLOR: BLACK
- CONTACT MATERIAL: COPPER ALLOY
- CONTACT FINISH: SEE ORDER INFORMATION
- TEMPERATURE RANGE: -55° TO +105° CENTIGRADE
- VOLTAGE RATING: 250 VAC
- CURRENT RATING: 3 AMPS MAX.
- INSULATION RESISTANCE: >3000 MEGOHMS @ 500 VDC
- CONTACT RESISTANCE: <15 MILLIOHMS
- DIELECTRIC WITHSTANDING VOLTAGE: 1000 VAC MINIMUM (1 MINUTE)



78 POSITION



THIS IS A CONTROLLED DOCUMENT AND IS SUBJECT TO CHANGE. CONTACT NORTHERN TECHNOLOGIES ENGINEERING FOR THE LATEST REVISION.

UNLESS OTHERWISE SPECIFIED 1. ALL DIMENSIONS ARE IN INCHES (MM) 2. DIMENSIONS ARE TYPICAL		Northern Technologies THIS DRAWING IS THE PROPERTY OF NORTHERN TECHNOLOGIES AND SHOULD NOT BE REPRODUCED WITHOUT NORTHERN TECHNOLOGIES WRITTEN PERMISSION.		
DRAWN JSD 24-JAN-06		PART NUMBER SEE ORDER INFORMATION DESCRIPTION DS3E SERIES CONNECTORS		
CHECKED SCN 24-JAN-06	ISSUED 24-JAN-06	SIZE B	CODE 200_158	DWG NO. 0002-200-158
		SCALE 1:1	SHEET 1 OF 1	