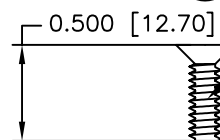
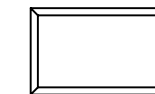


#2-56 UNC STAINLESS STEEL THUMBSCREW WITH PVC KNOB
QTY: 2 EACH



#2-56 UNC PHILLIPS HEAD MACHINE SCREW - STAINLESS STEEL
QTY: 4 EACH

NO LOGO



PART NUMBER INFORMATION

| PART# | THUMBSCREW LENGTH | LOGO STYLE | SUPPLIED |
|---------------|-------------------|-------------------|----------|
| NA90E120000 | #2-56 X 2.00" | NO LOGO COVER TOP | BULK |
| NA90E120100 | #2-56 X 2.00" | COVER BOTTOM | BULK |
| N90E120000 | #2-56 X 2.00" | NO LOGO | PACKAGED |
| NA90E120000H4 | #2-56 X 1.94" | NO LOGO COVER TOP | BULK |
| NA90E120100H4 | #2-56 X 1.94" | COVER BOTTOM | BULK |
| N90E120000H4 | #2-56 X 1.94" | NO LOGO | PACKAGED |

| REVISIONS | | | | |
|-----------|-----|-------------|-----------|----------|
| ZONE | REV | DESCRIPTION | DATE | APPROVED |
| | A | ECN 0582 | 07-OCT-05 | |
| | B | ECN 0587 | 14-NOV-05 | |

CONNECTOR COVER:

- 1.MATERIAL: ZINC ALLOY
- 2.FINISH: NICKEL PLATING PER NTC SPECIFICATION N/T 000400
- 3.DIMENSIONS: INCHES [MM]
- 4.TOLERANCE: ±0.015 [0.381]

COMPRESSION INSERT TREE

- 1.MATERIAL: THERMOPLASTIC PVC COMPOUND
- 2.COLOR: BLACK
- 3.DUROMETER: 75 ±5 TYPE A PER ASTM D2240
- 4.DIMENSIONS: INCHES [MM]
- 5.TOLERANCE: ±0.020 [0.508]

UNLESS OTHERWISE SPECIFIED
1. ALL DIMENSIONS ARE IN INCHES (MM)
2. DIMENSIONS ARE TYPICAL

Northern Technologies

THIS DRAWING IS THE PROPERTY OF NORTHERN TECHNOLOGIES AND SHOULD NOT BE REPRODUCED WITHOUT NORTHERN TECHNOLOGIES WRITTEN PERMISSION.

| | | | | |
|----------------|-----------|--|-----------------|-------------------------|
| DRAWN JSD | 23-MAR-05 | PART NUMBER SEE PART NUMBER INFORMATION | | |
| CHECKED SCN | 23-MAR-05 | DESCRIPTION CMHD 68 STR EXIT COVER W/THUMBSCREWS | | |
| ISSUED | 01-SEP-05 | SIZE B | CODE 200_145 | DWG NO. 0002-200-145 |
| | | SCALE 1:1 | SHEET 1 OF 1 | |

THIS IS A CONTROLLED DOCUMENT AND IS SUBJECT TO CHANGE. CONTACT NORTHERN TECHNOLOGIES ENGINEERING FOR THE LATEST REVISION.