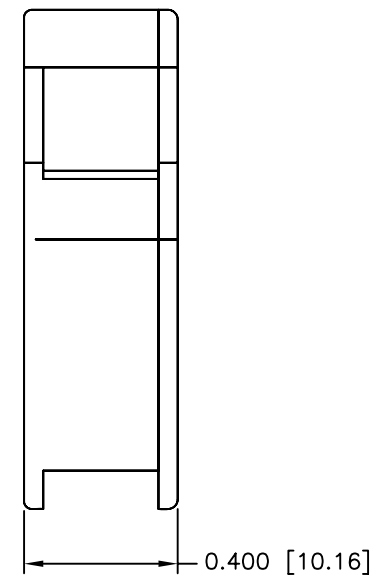
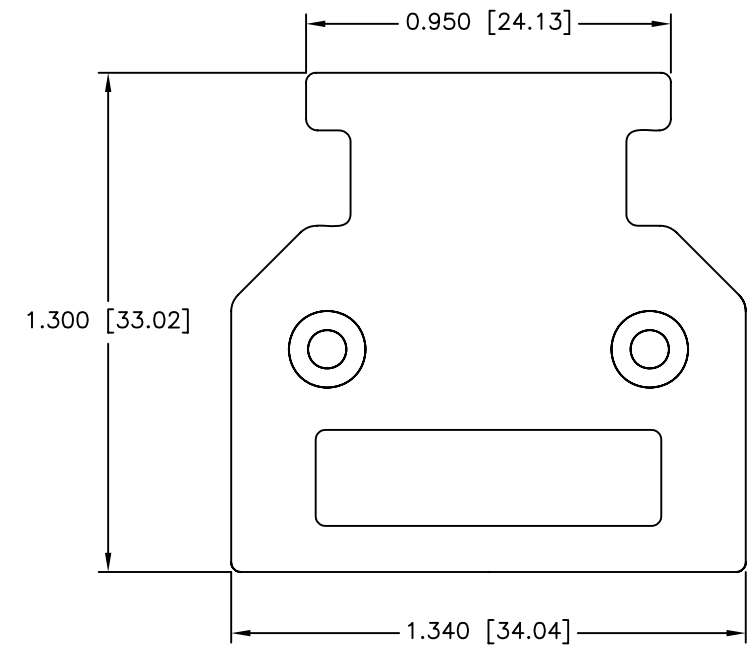
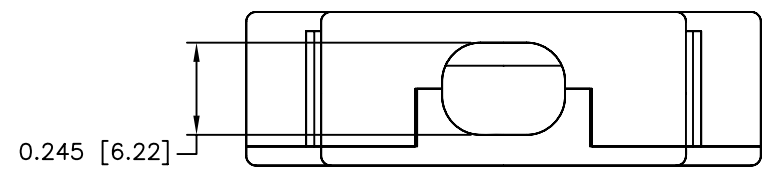
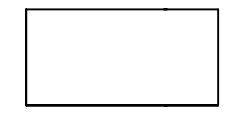


REVISIONS				
ZONE	REV	DESCRIPTION	DATE	APPROVED



NO LOGO

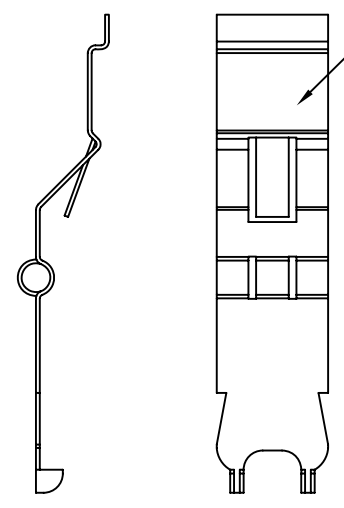


PART NUMBER INFORMATION

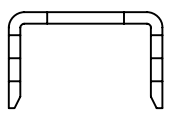
PART#	LOGO STYLE	SUPPLIED
NA91E100000	NO LOGO	BULK
N91E100000	NO LOGO	PACKAGED

CONNECTOR COVER:

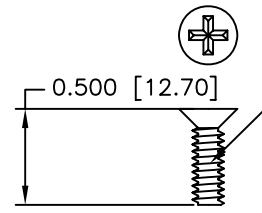
- 1.MATERIAL: ZINC ALLOY
- 2.FINISH: SEMI BRIGHT NICKEL PLATING PER NTC SPECIFICATION N/T 000400
- 3.DIMENSIONS: INCHES [MM]
- 4.TOLERANCE: ±0.015 [0.381]



LATCHES - STAINLESS STEEL  
QTY: 2 EACH



STRAIN RELIEF CLIP - LOW CARBON STEEL  
NICKEL PLATED  
QTY: 1



#2-56 UNC PHILLIPS HEAD MACHINE SCREW  
- STAINLESS STEEL  
QTY: 2 EACH

UNLESS OTHERWISE SPECIFIED 1. ALL DIMENSIONS ARE IN INCHES (MM) 2. DIMENSIONS ARE TYPICAL		<b>Northern Technologies</b> <small>THIS DRAWING IS THE PROPERTY OF NORTHERN TECHNOLOGIES AND SHOULD NOT BE REPRODUCED WITHOUT NORTHERN TECHNOLOGIES WRITTEN PERMISSION.</small>		
DRAWN JSD 19-MAY-09		PART NUMBER SEE PART NUMBER INFORMATION		
CHECKED SCN 19-MAY-09		DESCRIPTION CMHD 26 STR EXIT COVER W/LATCHES		
ISSUED 19-MAY-09	SCALE 2:1	SIZE B	CODE 200_143	DWG NO. 0002-200-143
				REV
				SHEET 1 OF 1