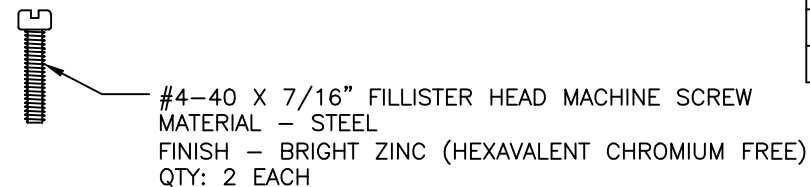


PART NUMBER INFORMATION  
COLOR: BLACK

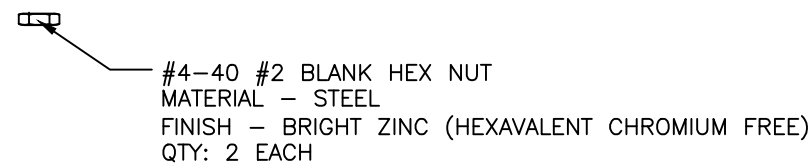
PART#	LOGO STYLE	SUPPLIED
A30E320004	NO LOGO	BULK
C88E320004	NO LOGO	PACKAGED
A30E321004	NORTECH LOGO	BULK
C88E321004	NORTECH LOGO	PACKAGED

COLOR: GRAY – DISCONTINUED

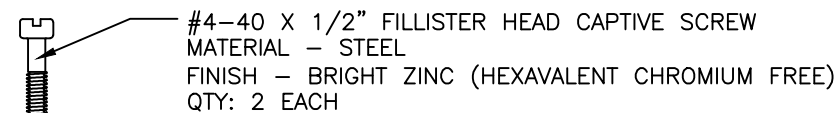
PART#	LOGO STYLE	SUPPLIED
A30E320005	NO LOGO	DISCONTINUED
C88E320005	NO LOGO	DISCONTINUED
A30E321005	NORTECH LOGO	DISCONTINUED
C88E321005	NORTECH LOGO	DISCONTINUED



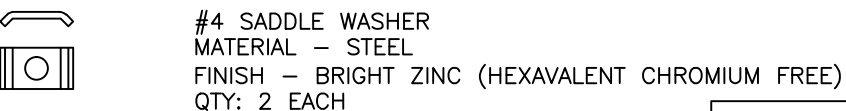
#4-40 X 7/16" FILLISTER HEAD MACHINE SCREW  
MATERIAL – STEEL  
FINISH – BRIGHT ZINC (HEXAVALENT CHROMIUM FREE)  
QTY: 2 EACH



#4-40 #2 BLANK HEX NUT  
MATERIAL – STEEL  
FINISH – BRIGHT ZINC (HEXAVALENT CHROMIUM FREE)  
QTY: 2 EACH



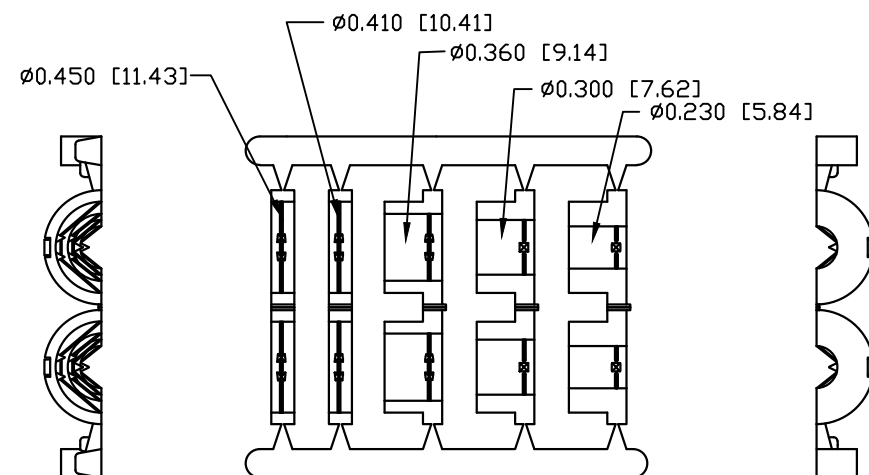
#4-40 X 1/2" FILLISTER HEAD CAPTIVE SCREW  
MATERIAL – STEEL  
FINISH – BRIGHT ZINC (HEXAVALENT CHROMIUM FREE)  
QTY: 2 EACH



#4 SADDLE WASHER  
MATERIAL – STEEL  
FINISH – BRIGHT ZINC (HEXAVALENT CHROMIUM FREE)  
QTY: 2 EACH

CONNECTOR COVER:  
1.MATERIAL: THERMOPLASTIC UL94V-0  
2.COLOR: BLACK  
3.DIMENSIONS: INCHES [MM]  
4.TOLERANCE: ±0.015 [0.381]

JACKET INSERT TREE  
1.MATERIAL: POLYPROPYLENE HOMOPOLYMER  
2.COLOR: BLACK  
3.DIMENSIONS: INCHES [MM]  
4.TOLERANCE: ±0.010 [0.254]



JACKET INSERT TREE  
QTY: 1

THIS IS A CONTROLLED DOCUMENT AND IS  
SUBJECT TO CHANGE. CONTACT NORTHERN  
TECHNOLOGIES ENGINEERING FOR THE  
LATEST REVISION.

UNLESS OTHERWISE SPECIFIED		Northern Technologies			
1. ALL DIMENSIONS ARE IN INCHES (MM) 2. DIMENSIONS ARE TYPICAL		THIS DRAWING IS THE PROPERTY OF NORTHERN TECHNOLOGIES AND SHOULD NOT BE REPRODUCED WITHOUT NORTHERN TECHNOLOGIES WRITTEN PERMISSION.			
DRAWN JSD		PART NUMBER SEE PART NUMBER INFORMATION			
CHECKED SCN		DESCRIPTION CPP 25 STR EXIT TWO PIECE PLASTIC COVER			
ISSUED		SIZE B	CODE 200_124	DWG NO. 0002-200-124	REV B
		SCALE 1:1		SHEET 1 OF 1	