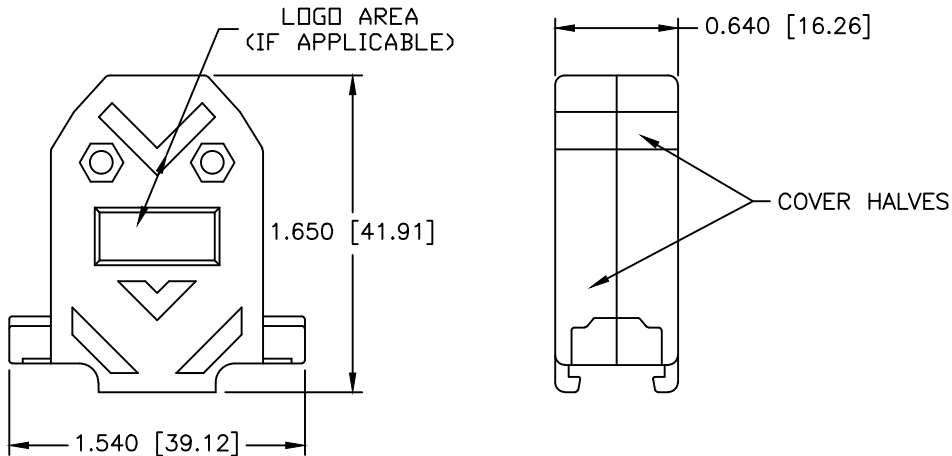
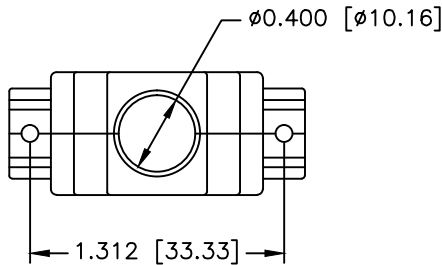


REVISIONS				
ZONE	REV	DESCRIPTION	DATE	APPROVED
	A	ECN 0845	19-FEB-24	



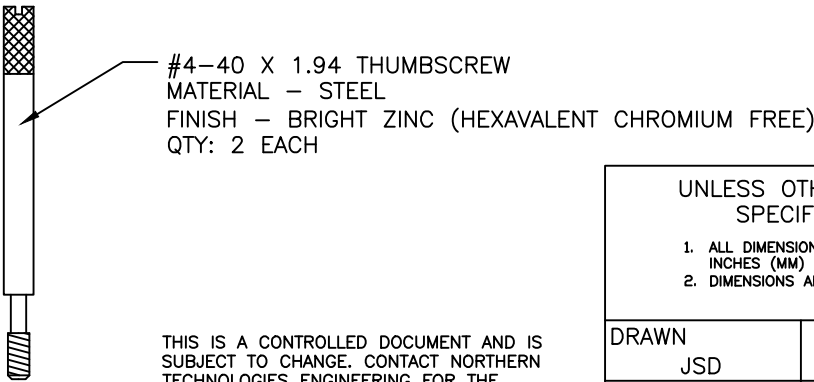
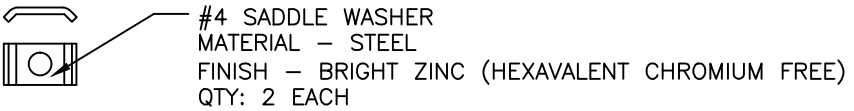
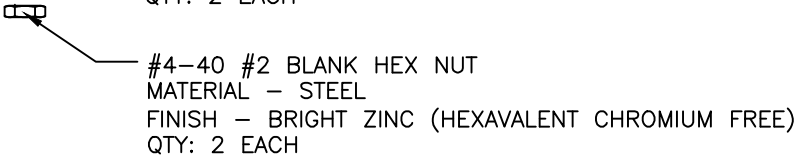
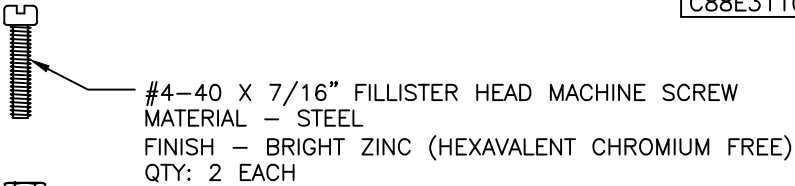
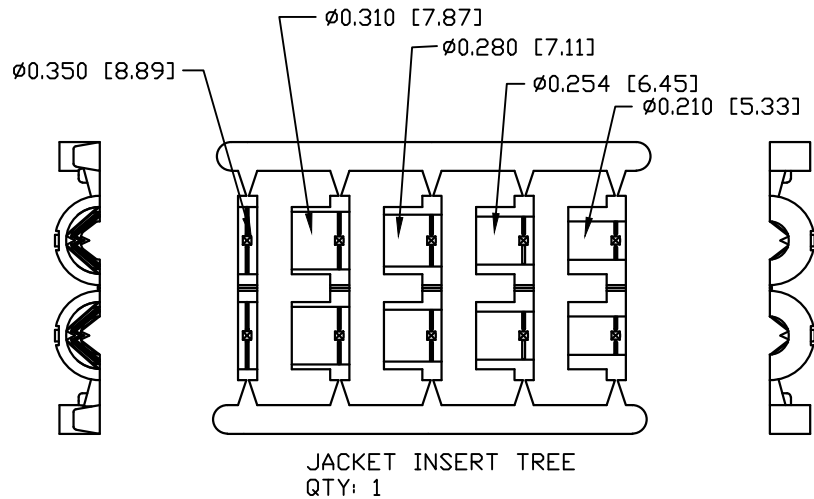
PART NUMBER INFORMATION

PART#	LOGO STYLE	SUPPLIED
C88E310004T	NO LOGO	PACKAGED
C88E311004T	NORTECH LOGO	PACKAGED

PART#	LOGO STYLE	SUPPLIED
C88E310005T	NO LOGO	DISCONTINUED
C88E311005T	NORTECH LOGO	DISCONTINUED

COLOR: BLACK

COLOR: GRAY — DISCONTINUED



CONNECTOR COVER:
1.MATERIAL: THERMOPLASTIC UL94V-0
2.COLOR: BLACK
3.DIMENSIONS: INCHES [MM]
4.TOLERANCE: ±0.015 [0.381]

JACKET INSERT TREE
1.MATERIAL: POLYPROPYLENE HOMOPOLYMER
2.COLOR: BLACK
3.DIMENSIONS: INCHES [MM]
4.TOLERANCE: ±0.010 [0.254]

THIS IS A CONTROLLED DOCUMENT AND IS
SUBJECT TO CHANGE. CONTACT NORTHERN
TECHNOLOGIES ENGINEERING FOR THE
LATEST REVISION.

UNLESS OTHERWISE SPECIFIED 1. ALL DIMENSIONS ARE IN INCHES (MM) 2. DIMENSIONS ARE TYPICAL		Northern Technologies				THIS DRAWING IS THE PROPERTY OF NORTHERN TECHNOLOGIES AND SHOULD NOT BE REPRODUCED WITHOUT NORTHERN TECHNOLOGIES WRITTEN PERMISSION.	
		PART NUMBER SEE PART NUMBER INFORMATION					
DRAWN JSD	24-JAN-07	DESCRIPTION CPP 15 STR EXIT TWO PIECE PLASTIC COVER WITH THUMBSCREWS					
CHECKED SCN	24-JAN-07	SIZE B	CODE 200_123T	DWG NO. 0002-200-123T			REV A
ISSUED	24-JAN-07	SCALE 1:1				SHEET 1 OF 1	