

REVISIONS				
ZONE	REV	DESCRIPTION	DATE	APPROVED
	A	ECN 0758	19-NOV-14	
	B	ECN 0845	19-FEB-24	

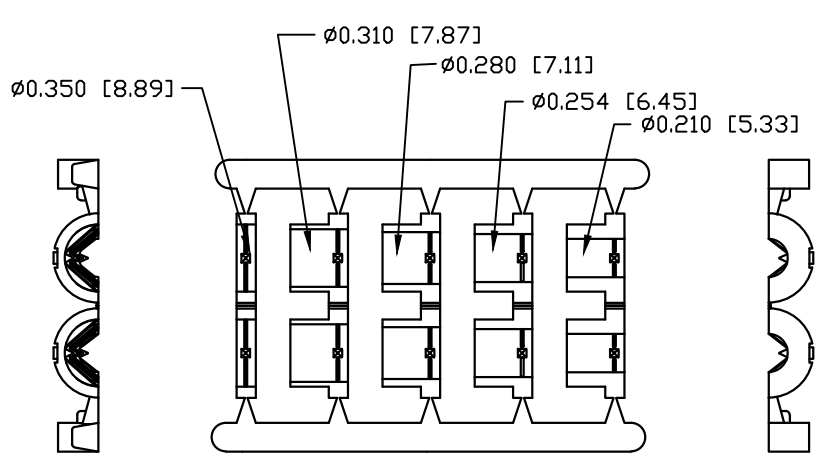


PART NUMBER INFORMATION
COLOR: BLACK

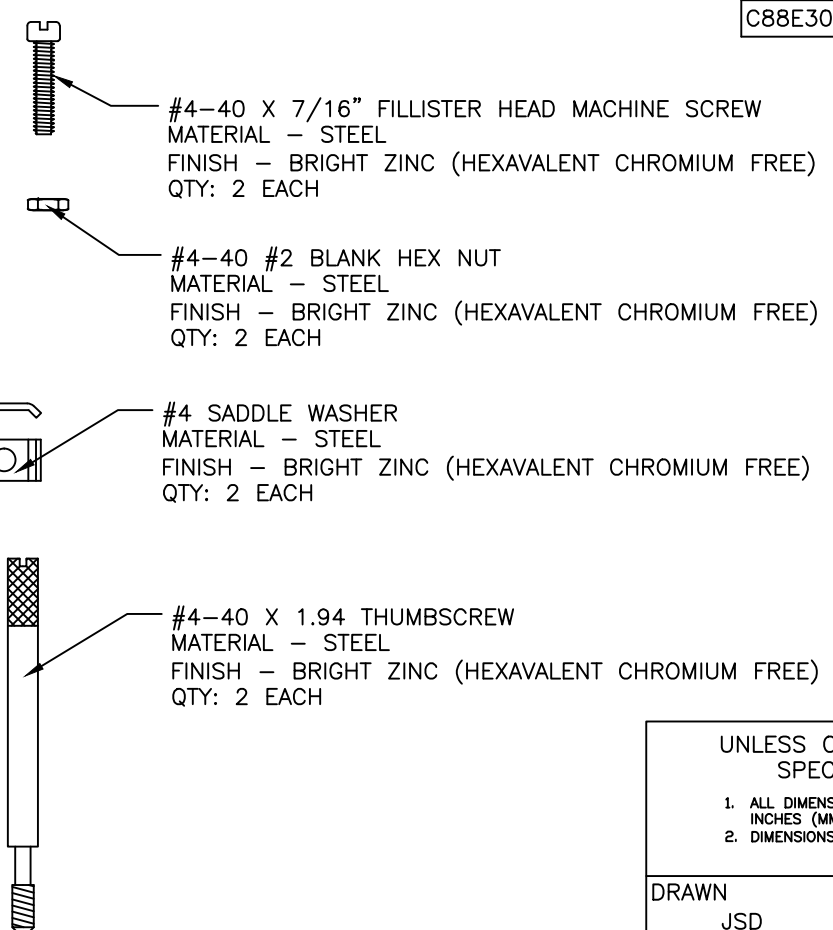
PART#	LOGO STYLE	SUPPLIED
C88E300004T	NO LOGO	PACKAGED
C88E301004T	NORTECH LOGO	PACKAGED

COLOR: GRAY— DISCONTINUED

PART#	LOGO STYLE	SUPPLIED
C88E300005T	NO LOGO	DISCONTINUED
C88E301005T	NORTECH LOGO	DISCONTINUED



JACKET INSERT TREE
QTY: 1



CONNECTOR COVER:
1.MATERIAL: THERMOPLASTIC UL94V-0
2.COLOR: BLACK
3.DIMENSIONS: INCHES [MM]
4.TOLERANCE: ±0.015 [0.381]

JACKET INSERT TREE
1.MATERIAL: POLYPROPYLENE HOMOPOLYMER
2.COLOR: BLACK
3.DIMENSIONS: INCHES [MM]
4.TOLERANCE: ±0.010 [0.254]

THIS IS A CONTROLLED DOCUMENT AND IS
SUBJECT TO CHANGE. CONTACT NORTHERN
TECHNOLOGIES ENGINEERING FOR THE
LATEST REVISION.

UNLESS OTHERWISE SPECIFIED		Northern Technologies			
1. ALL DIMENSIONS ARE IN INCHES (MM) 2. DIMENSIONS ARE TYPICAL		THIS DRAWING IS THE PROPERTY OF NORTHERN TECHNOLOGIES AND SHOULD NOT BE REPRODUCED WITHOUT NORTHERN TECHNOLOGIES WRITTEN PERMISSION.			
DRAWN JSD		24-JAN-07		PART NUMBER SEE PART NUMBER INFORMATION	
CHECKED SCN		24-JAN-07		DESCRIPTION CPP 09 STR EXIT TWO PIECE PLASTIC COVER WITH THUMBSCREWS	
ISSUED		24-JAN-07		SIZE B	REV B
				CODE 200_122T	DWG NO. 0002-200-122T
				SCALE 1:1	SHEET 1 OF 1