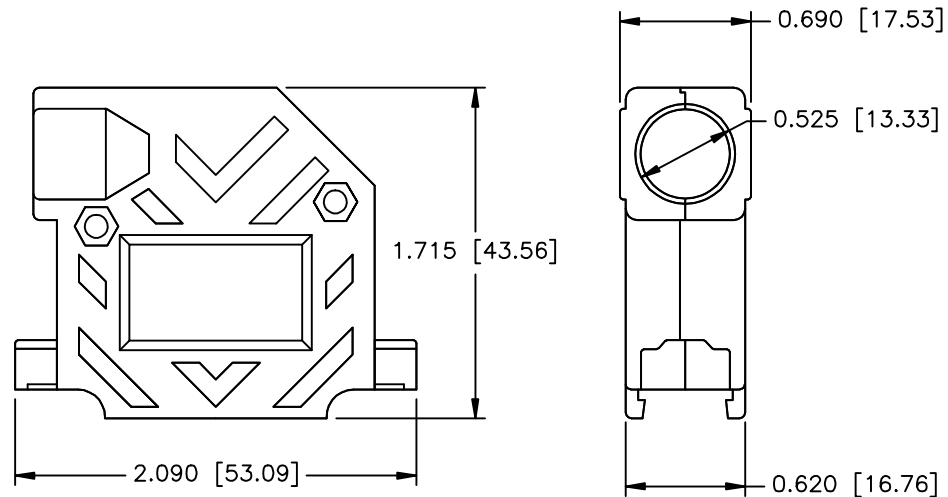
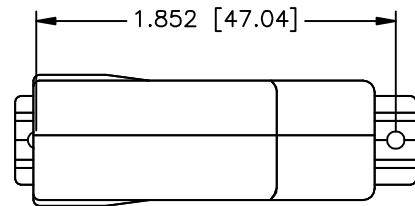





REVISIONS				
ZONE	REV	DESCRIPTION	DATE	APPROVED

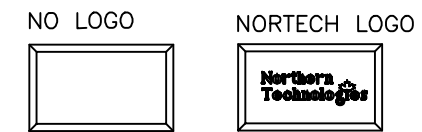


 #4-40 X 7/16" FILLISTER HEAD MACHINE SCREW  
MATERIAL - STEEL  
FINISH - BRIGHT ZINC  
QTY: 2 EACH

 #4-40 #2 BLANK HEX NUT  
MATERIAL - STEEL  
FINISH - BRIGHT ZINC  
QTY: 2 EACH

 #4-40 X 1.94 THUMBSCREW  
MATERIAL - STEEL  
FINISH - BRIGHT ZINC  
QTY: 1 EACH

 #4-40 X 0.84 THUMBSCREW  
MATERIAL - STEEL  
FINISH - BRIGHT ZINC  
QTY: 1 EACH



**PART NUMBER INFORMATION**

PART#	LOGO STYLE	SUPPLIED
NA30E420000T3	NO LOGO TOP COVER	BULK
NA30E421000T3	NORTECH LOGO TOP COVER*	BULK
NA30E420100	BOTTOM COVER	BULK
N88E420000T3	NO LOGO	PACKAGED
N88E421000T3	NORTECH LOGO*	PACKAGED

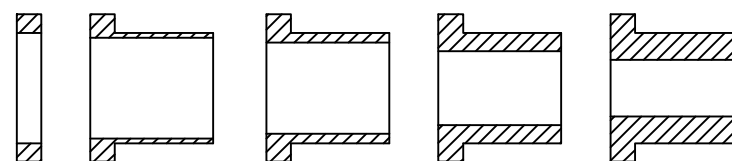
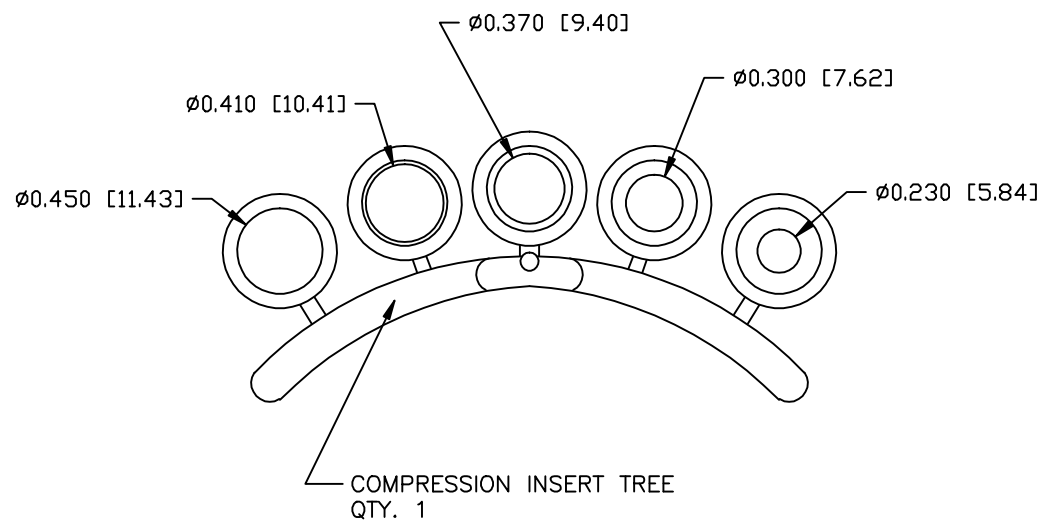
\*CONTACT NORTHERN TECHNOLOGIES

**CONNECTOR COVER:**

- 1.MATERIAL: ZINC ALLOY
- 2.FINISH: NICKEL OVER COPPER UNDER-PLATE PER NTC SPECIFICATION N/T 000400
- 3.DIMENSIONS: INCHES [MM]
- 4.TOLERANCE: ±0.015 [0.381]

**COMPRESSION INSERT TREE**

- 1.MATERIAL: THERMOPLASTIC
- 2.COLOR: BLACK
- 3.DUROMETER: 75 ±5 TYPE A PER ASTM D2240
- 4.DIMENSIONS: INCHES [MM]
- 5.TOLERANCE: ±0.020 [0.508]



THIS IS A CONTROLLED DOCUMENT AND IS SUBJECT TO CHANGE. CONTACT NORTHERN TECHNOLOGIES ENGINEERING FOR THE LATEST REVISION.

UNLESS OTHERWISE SPECIFIED 1. ALL DIMENSIONS ARE IN INCHES (MM) 2. DIMENSIONS ARE TYPICAL		<b>Northern Technologies</b> <small>THIS DRAWING IS THE PROPERTY OF NORTHERN TECHNOLOGIES AND SHOULD NOT BE REPRODUCED WITHOUT NORTHERN TECHNOLOGIES WRITTEN PERMISSION.</small>		
DRAWN JSD 02-JAN-13		PART NUMBER SEE PART NUMBER INFORMATION		
CHECKED SCN 02-JAN-13		DESCRIPTION CMR 25 RIGHT ANGLE COVER W/THUMBSCREWS		
ISSUED 02-JAN-13		SIZE B	CODE 200_106NT3	DWG NO. 0002-200-106NT3
		SCALE 1:1		REV
				SHEET 1 OF 1