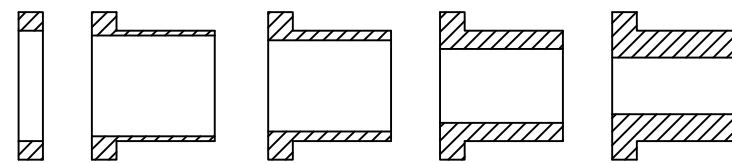
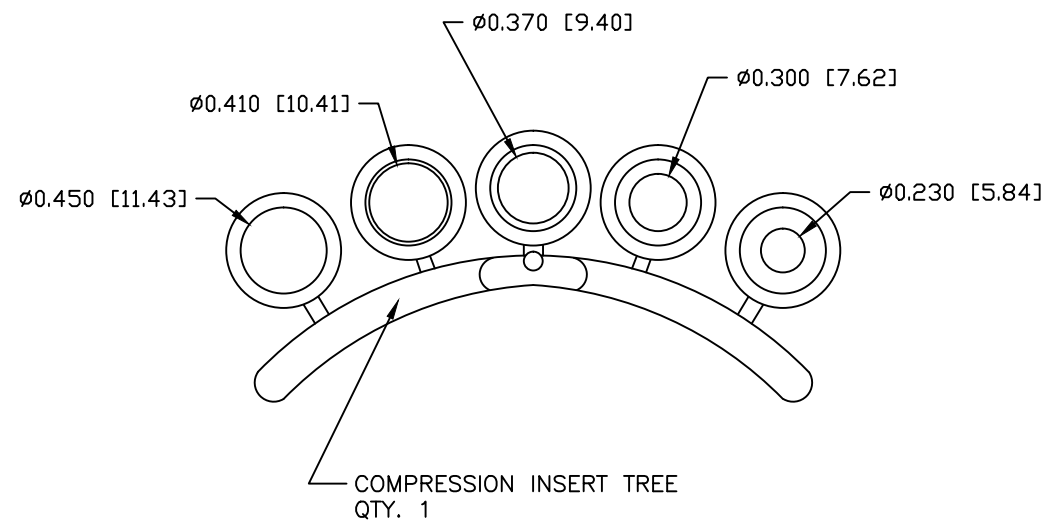
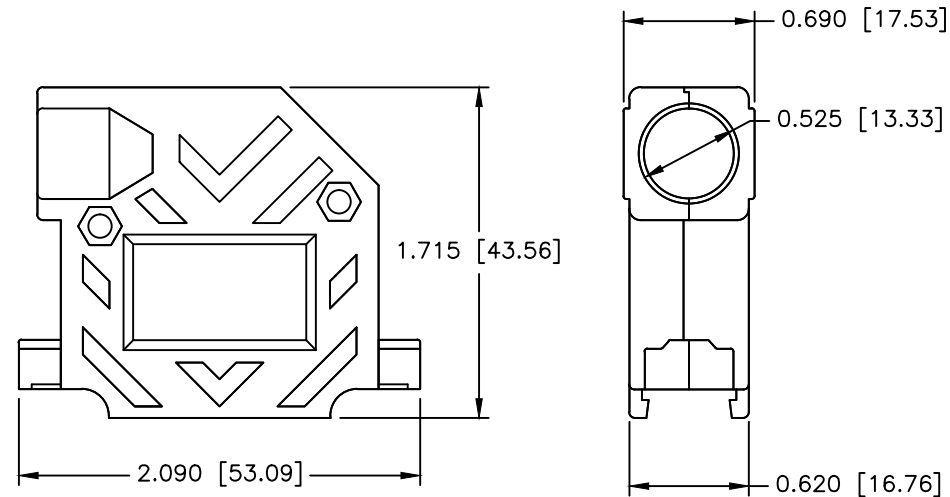
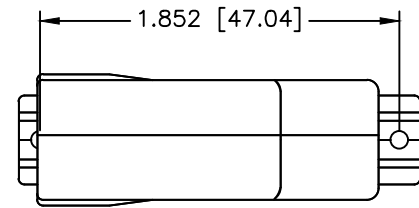





REVISIONS				
ZONE	REV	DESCRIPTION	DATE	APPROVED



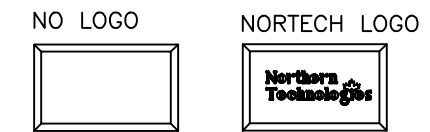
 #4-40 X 7/16" FILLISTER HEAD MACHINE SCREW
MATERIAL - STEEL
FINISH - BRIGHT ZINC
QTY: 2 EACH

 #4-40 #2 BLANK HEX NUT
MATERIAL - STEEL
FINISH - BRIGHT ZINC
QTY: 2 EACH

 #4-40 X 1/2" FILLISTER HEAD MATING SCREW
MATERIAL - STEEL
FINISH - BRIGHT ZINC
QTY: 2 EACH

 #4 SADDLE WASHER
MATERIAL - STEEL
FINISH - BRIGHT ZINC
QTY: 2 EACH

THIS IS A CONTROLLED DOCUMENT AND IS SUBJECT TO CHANGE. CONTACT NORTHERN TECHNOLOGIES ENGINEERING FOR THE LATEST REVISION.



PART NUMBER INFORMATION

PART#	LOGO STYLE	SUPPLIED
NA30E420000	NO LOGO TOP COVER	BULK
NA30E421000	NORTECH LOGO TOP COVER*	BULK
NA30E420100	BOTTOM COVER	BULK
N88E420000	NO LOGO	PACKAGED
N88E421000	NORTECH LOGO*	PACKAGED

*CONTACT NORTHERN TECHNOLOGIES

CONNECTOR COVER:

- 1.MATERIAL: ZINC ALLOY
- 2.FINISH: NICKEL OVER COPPER UNDER-PLATE PER NTC SPECIFICATION N/T 000400
- 3.DIMENSIONS: INCHES [MM]
- 4.TOLERANCE: ±0.015 [0.381]

COMPRESSION INSERT TREE

- 1.MATERIAL: THERMOPLASTIC
- 2.COLOR: BLACK
- 3.DUROMETER: 75 ±5 TYPE A PER ASTM D2240
- 4.DIMENSIONS: INCHES [MM]
- 5.TOLERANCE: ±0.020 [0.508]

UNLESS OTHERWISE SPECIFIED 1. ALL DIMENSIONS ARE IN INCHES (MM) 2. DIMENSIONS ARE TYPICAL		Northern Technologies <small>THIS DRAWING IS THE PROPERTY OF NORTHERN TECHNOLOGIES AND SHOULD NOT BE REPRODUCED WITHOUT NORTHERN TECHNOLOGIES WRITTEN PERMISSION.</small>		
DRAWN JSD		PART NUMBER SEE PART NUMBER INFORMATION		
02-JAN-13		DESCRIPTION CMR 25 RIGHT ANGLE COVER NICKEL PLATED		
CHECKED SCN	02-JAN-13	SIZE B	CODE 200_106N	DWG NO. 0002-200-106N
ISSUED	02-JAN-13	SCALE 1:1		REV
				SHEET 1 OF 1