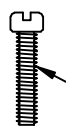


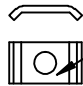
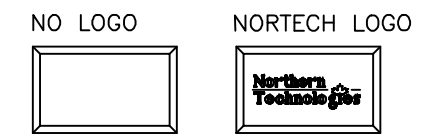


-  #4-40 X 7/16" FILLISTER HEAD MACHINE SCREW
MATERIAL - STEEL
FINISH - BRIGHT ZINC
QTY: 2 EACH
-  #4-40 #2 BLANK HEX NUT
MATERIAL - STEEL
FINISH - BRIGHT ZINC
QTY: 2 EACH
-  FILLISTER HEAD CAPTIVE SCREW
HEAD STYLE - SEE PAGE 2
MATERIAL - SEE PAGE 2
FINISH - SEE PAGE 2
QTY: 2 EACH
-  #4 SADDLE WASHER
MATERIAL - STEEL
FINISH - BRIGHT ZINC
QTY: 2 EACH



CONNECTOR COVER:
 1. MATERIAL: ZINC ALLOY
 2. FINISH: NICKEL PLATING PER NTC SPECIFICATION N/T 000400
 3. DIMENSIONS: INCHES [MM]
 4. TOLERANCE: ±0.015 [0.381]

COMPRESSION INSERT TREE
 1. MATERIAL: THERMOPLASTIC
 2. COLOR: BLACK
 3. DUROMETER: 75 ±5 TYPE A PER ASTM D2240
 4. DIMENSIONS: INCHES [MM]
 5. TOLERANCE: ±0.020 [0.508]

REVISIONS				
ZONE	REV	DESCRIPTION	DATE	APPROVED

UNLESS OTHERWISE SPECIFIED 1. ALL DIMENSIONS ARE IN INCHES (MM) 2. DIMENSIONS ARE TYPICAL		Northern Technologies THIS DRAWING IS THE PROPERTY OF NORTHERN TECHNOLOGIES AND SHOULD NOT BE REPRODUCED WITHOUT NORTHERN TECHNOLOGIES WRITTEN PERMISSION.		
DRAWN JSD 29-JUL-13		PART NUMBER SEE PART NUMBER INFORMATION DESCRIPTION CM 37 METAL COVER Ni		
CHECKED SCN 29-JUL-13	ISSUED 29-JUL-13	SIZE B	CODE 200_104N	DWG NO. 0002-200-104N
SCALE NTS		SHEET 1 OF 2		REV

THIS IS A CONTROLLED DOCUMENT AND IS SUBJECT TO CHANGE. CONTACT NORTHERN TECHNOLOGIES ENGINEERING FOR THE LATEST REVISION.

PART NUMBER INFORMATION

PART#	WITH #4-40 X 1/2" CAPTIVE SCREWS (SLOT HEAD)	SUPPLIED
N29E821373	NO LOGO COVER TOP	BULK
N29E921370	NORTECH LOGO COVER TOP	BULK
N30E130100	COVER BOTTOM	BULK
N88E000210	NO LOGO	PACKAGED
N88E000206	NORTECH LOGO	PACKAGED

PART#	WITH #4-40 X 7/16" CAPTIVE SCREWS (SLOT HEAD)	SUPPLIED
N29E8213731	NO LOGO COVER TOP	BULK
N29E9213701	NORTECH LOGO COVER TOP	BULK
N30E130100	COVER BOTTOM	BULK
N88E0002101	NO LOGO	PACKAGED
N88E0002061	NORTECH LOGO	PACKAGED

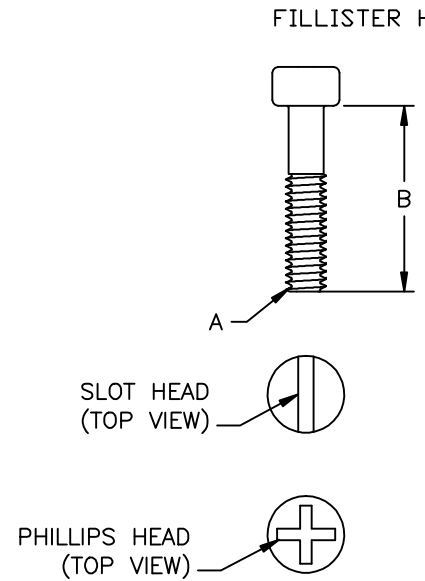
PART#	WITH M2.5 X 12.7MM CAPTIVE SCREWS (SLOT HEAD)	SUPPLIED
N29E821373M25S	NO LOGO COVER TOP	BULK
N29E921370M25S	NORTECH LOGO COVER TOP	BULK
N30E130100	COVER BOTTOM	BULK
N88E000210M25S	NO LOGO	PACKAGED
N88E000206M25S	NORTECH LOGO	PACKAGED

PART#	WITH M2.6 X 12.7MM CAPTIVE SCREWS (SLOT HEAD)	SUPPLIED
N29E821373M26S	NO LOGO COVER TOP	BULK
N29E921370M26S	NORTECH LOGO COVER TOP	BULK
N30E130100	COVER BOTTOM	BULK
N88E000210M26S	NO LOGO	PACKAGED
N88E000206M26S	NORTECH LOGO	PACKAGED

PART#	WITH M3 X 12.7MM CAPTIVE SCREWS (SLOT HEAD)	SUPPLIED
N29E821373M3S	NO LOGO COVER TOP	BULK
N29E921370M3S	NORTECH LOGO COVER TOP	BULK
N30E130100	COVER BOTTOM	BULK
N88E000210M3S	NO LOGO	PACKAGED
N88E000206M3S	NORTECH LOGO	PACKAGED

PART#	WITH #4-40 X 1/2" CAPTIVE SCREWS (PHILLIPS HEAD)	SUPPLIED
N29E821373PS	NO LOGO COVER TOP	BULK
N29E921370PS	NORTECH LOGO COVER TOP	BULK
N30E130100	COVER BOTTOM	BULK
N88E000210PS	NO LOGO	PACKAGED
N88E000206PS	NORTECH LOGO	PACKAGED

REVISIONS				
ZONE	REV	DESCRIPTION	DATE	APPROVED



THREAD (A)	LENGTH (B)	HEAD STYLE	MATERIAL	PLATING
#4-40 UNC	1/2 INCH	SLOT	COLD ROLL STEEL	ZINC
#4-40 UNC	7/16 INCH	SLOT	COLD ROLL STEEL	ZINC
M2.5 X .45MM	12.7 MM	SLOT	LOW CARBON STEEL	ZINC
M2.6 X .45MM	12.7 MM	SLOT	LOW CARBON STEEL	ZINC
M3 X .5MM	12.7 MM	SLOT	LOW CARBON STEEL	ZINC
#4-40 UNC	1/2 INCH	PHILLIPS	LOW CARBON STEEL	ZINC

THIS IS A CONTROLLED DOCUMENT AND IS SUBJECT TO CHANGE. CONTACT NORTHERN TECHNOLOGIES ENGINEERING FOR THE LATEST REVISION.

UNLESS OTHERWISE SPECIFIED 1. ALL DIMENSIONS ARE IN INCHES [MM] 2. DIMENSIONS ARE TYPICAL		Northern Technologies <small>THIS DRAWING IS THE PROPERTY OF NORTHERN TECHNOLOGIES AND SHOULD NOT BE REPRODUCED WITHOUT NORTHERN TECHNOLOGIES WRITTEN PERMISSION.</small>		
DRAWN JSD		PART NUMBER SEE PART NUMBER INFORMATION DESCRIPTION CM 37 METAL COVER Ni		
CHECKED SCN	29-JUL-13	SIZE B	CODE 200_104N	DWG NO. 0002-200-104N
ISSUED	29-JUL-13	SCALE NTS	REV SHEET 2 OF 2	