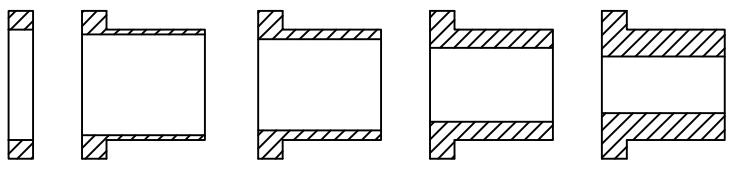
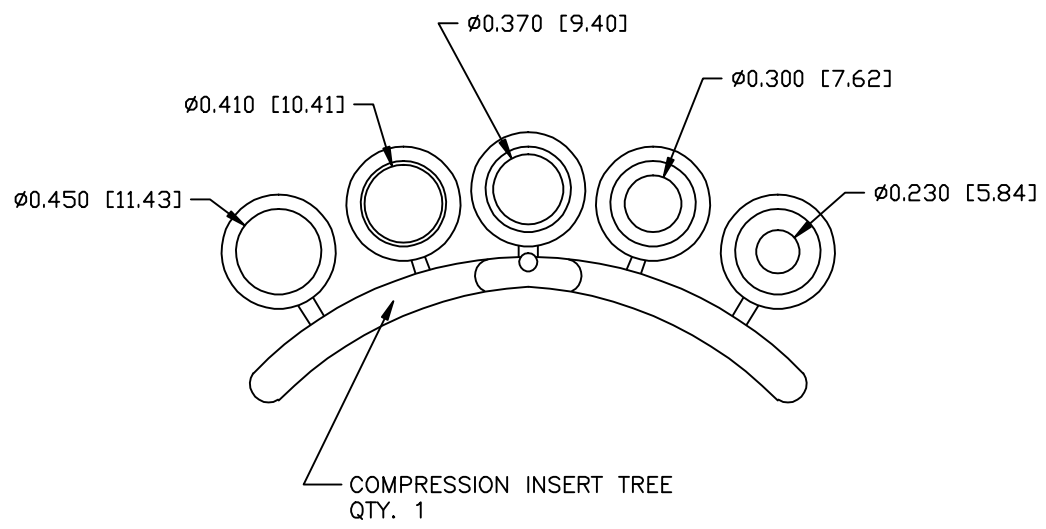
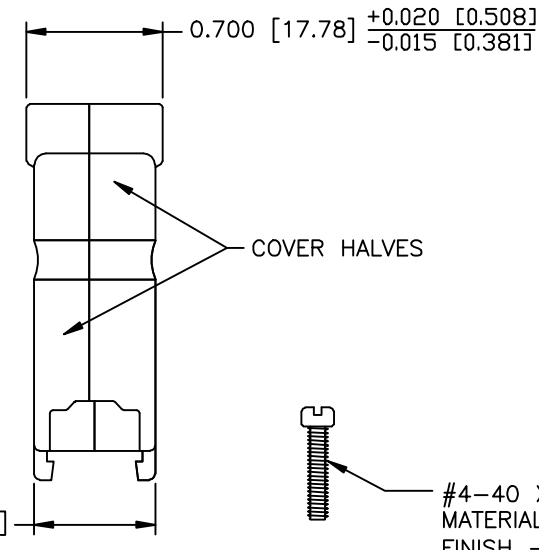
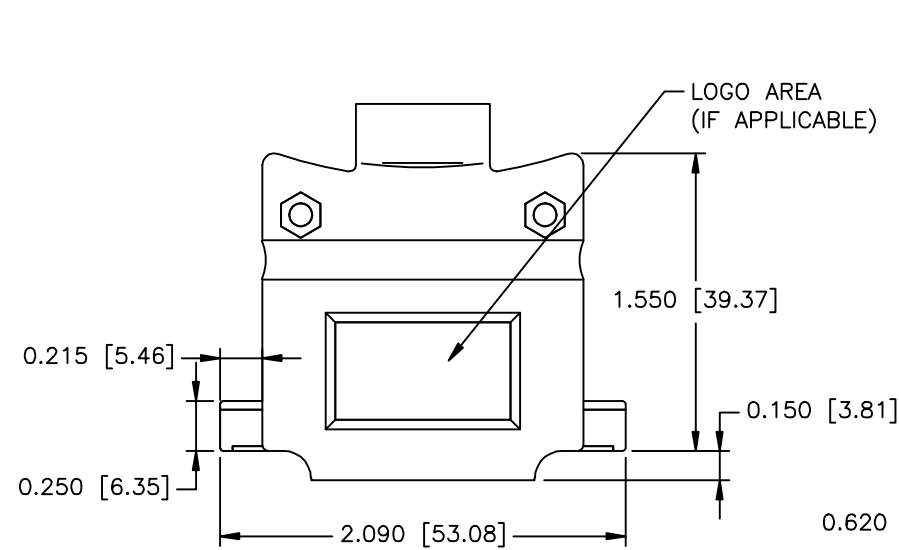
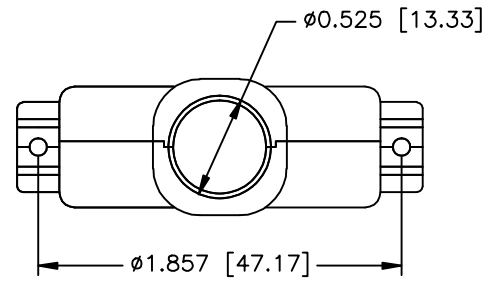


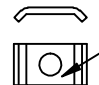
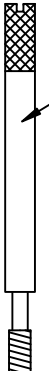
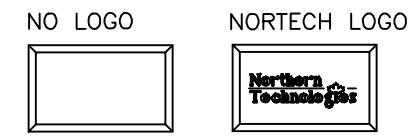


REVISIONS				
ZONE	REV	DESCRIPTION	DATE	APPROVED
	A	ECN 0807	19-MAR-19	



-  #4-40 X 7/16" FILLISTER HEAD MACHINE SCREW
MATERIAL - STEEL
FINISH - BRIGHT ZINC (HEXAVALENT CHROMIUM FREE)
QTY: 2 EACH
-  #4-40 #2 BLANK HEX NUT
MATERIAL - STEEL
FINISH - BRIGHT ZINC (HEXAVALENT CHROMIUM FREE)
QTY: 2 EACH
-  #4 SADDLE WASHER
MATERIAL - STEEL
FINISH - BRIGHT ZINC (HEXAVALENT CHROMIUM FREE)
QTY: 2 EACH
-  #4-40 X 1.94 THUMBSCREW
MATERIAL - STEEL
FINISH - BRIGHT ZINC (HEXAVALENT CHROMIUM FREE)
QTY: 2 EACH



PART NUMBER INFORMATION

PART#	LOGO STYLE	SUPPLIED
C88E000204T	NO LOGO	PACKAGED
C88E000203T	NORTECH LOGO	PACKAGED

CONNECTOR COVER:

1. MATERIAL: ZINC ALLOY
2. FINISH: BRIGHT ZINC PLATING PER NTC SPECIFICATION N/T 000100
3. DIMENSIONS: INCHES [MM]
4. UNLESS OTHERWISE STATED - TOLERANCE: ±0.015 [0.381]

COMPRESSION INSERT TREE

1. MATERIAL: THERMOPLASTIC
2. COLOR: BLACK
3. DUROMETER: 75 ±5 TYPE A PER ASTM D2240
4. DIMENSIONS: INCHES [MM]
5. TOLERANCE: ±0.020 [0.508]

THIS IS A CONTROLLED DOCUMENT AND IS SUBJECT TO CHANGE. CONTACT NORTHERN TECHNOLOGIES ENGINEERING FOR THE LATEST REVISION.

UNLESS OTHERWISE SPECIFIED 1. ALL DIMENSIONS ARE IN INCHES (MM) 2. DIMENSIONS ARE TYPICAL		Northern Technologies <small>THIS DRAWING IS THE PROPERTY OF NORTHERN TECHNOLOGIES AND SHOULD NOT BE REPRODUCED WITHOUT NORTHERN TECHNOLOGIES WRITTEN PERMISSION.</small>		
DRAWN JSD 23-JAN-07				
CHECKED SCN 23-JAN-07		DESCRIPTION CM 25 METAL COVER WITH THUMBSCREWS		
ISSUED 23-JAN-07	SCALE 1:1	SIZE B	CODE 200_103T	DWG NO. 0002-200-103T
				REV
				SHEET 1 OF 1