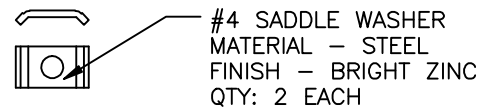
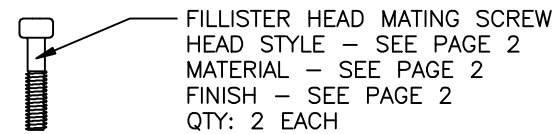
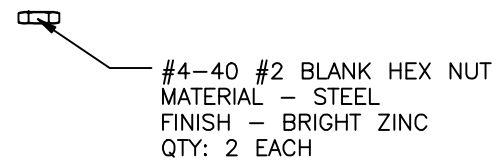
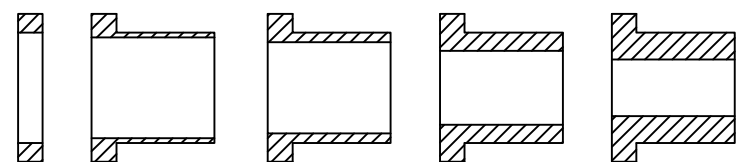
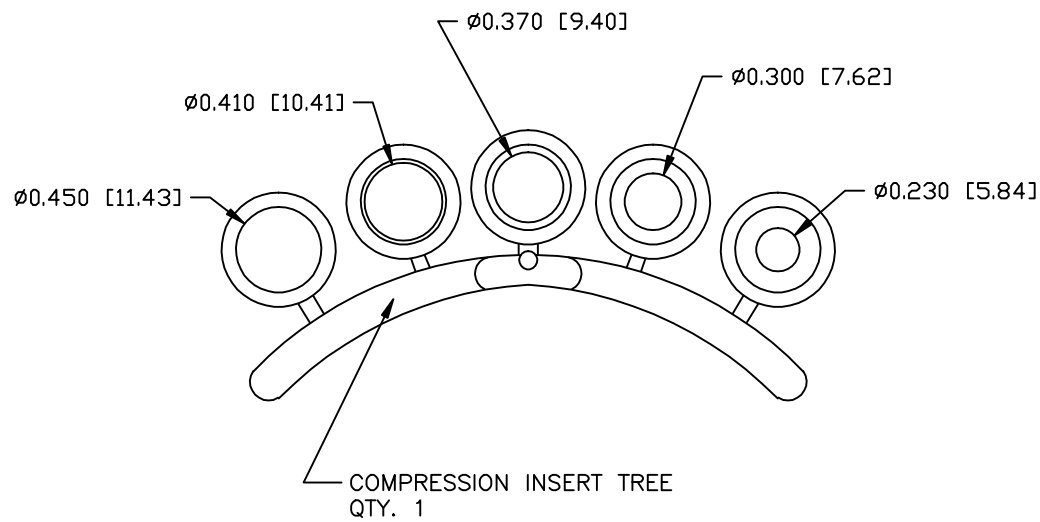
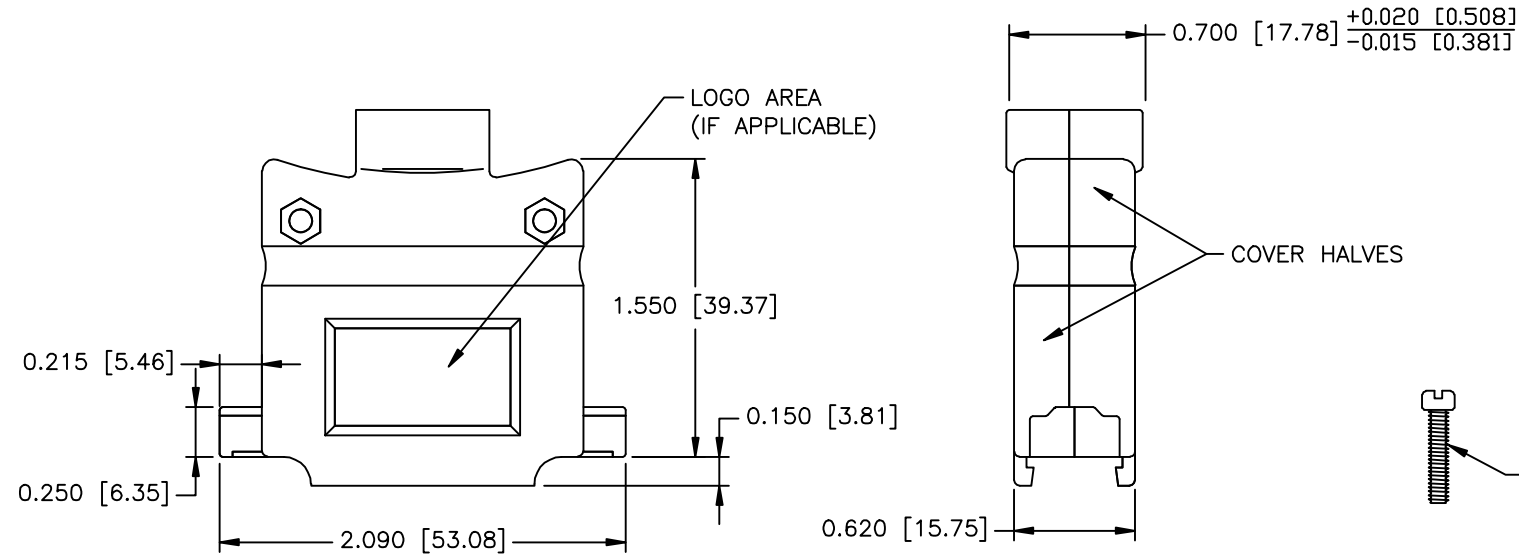
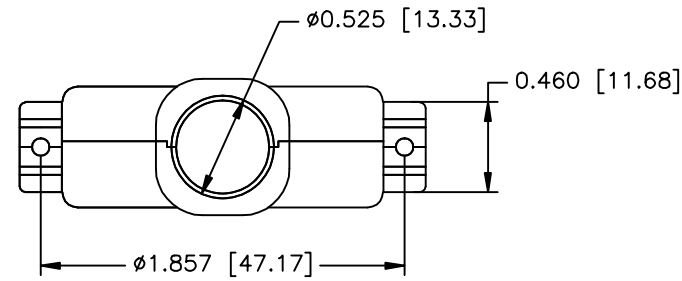
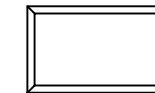


REVISIONS				
ZONE	REV	DESCRIPTION	DATE	APPROVED
	A	ECN 0531	06-MAY-05	
	B	ECN 0600	10-AUG-06	
	C	ECN 0628	24-JAN-07	
	D	ECN 0643	24-JAN-08	
	E	ECN 0644	08-FEB-08	
	F	ECN 0792	12-JUL-16	
	G	ECN 0807	19-MAR-19	



NO LOGO



NORTECH LOGO



CONNECTOR COVER:

- 1.MATERIAL: ZINC ALLOY
- 2.FINISH: BRIGHT ZINC PLATING PER NTC SPECIFICATION N/T 000100
- 3.DIMENSIONS: INCHES [MM]
- 4.UNLESS OTHERWISE STATED - TOLERANCE: ± 0.015 [0.381]

COMPRESSION INSERT TREE

- 1.MATERIAL: THERMOPLASTIC
- 2.COLOR: BLACK
- 3.DUROMETER: 75 ± 5 TYPE A PER ASTM D2240
- 4.DIMENSIONS: INCHES [MM]
- 5.TOLERANCE: ± 0.020 [0.508]

THIS IS A CONTROLLED DOCUMENT AND IS SUBJECT TO CHANGE. CONTACT NORTHERN TECHNOLOGIES ENGINEERING FOR THE LATEST REVISION.

UNLESS OTHERWISE SPECIFIED		Northern Technologies <small>THIS DRAWING IS THE PROPERTY OF NORTHERN TECHNOLOGIES AND SHOULD NOT BE REPRODUCED WITHOUT NORTHERN TECHNOLOGIES WRITTEN PERMISSION.</small>			
1. ALL DIMENSIONS ARE IN INCHES (MM) 2. DIMENSIONS ARE TYPICAL					
DRAWN JSD		20-MAR-05		PART NUMBER SEE PART NUMBER INFORMATION	
CHECKED SCN		20-MAR-05		DESCRIPTION CM 25 METAL COVER	
ISSUED		20-MAR-05		SIZE B	CODE 200_103
				DWG NO. 0002-200-103	REV
		SCALE NTS		SHEET 1 OF 2	

PART NUMBER INFORMATION

PART#	WITH #4-40 X 1/2" MATING SCREWS (SLOT HEAD)	SUPPLIED
A29E821255	NO LOGO COVER TOP	BULK
A29E921250	NORTECH LOGO COVER TOP	BULK
A30E120100	COVER BOTTOM	BULK
C88E000204	NO LOGO	PACKAGED
C88E000203	NORTECH LOGO	PACKAGED

PART#	WITH #4-40 X 7/16" MATING SCREWS (SLOT HEAD)	SUPPLIED
A29E8212551	NO LOGO COVER TOP	BULK
A29E9212501	NORTECH LOGO COVER TOP	BULK
A30E120100	COVER BOTTOM	BULK
C88E0002041	NO LOGO	PACKAGED
C88E0002031	NORTECH LOGO	PACKAGED

PART#	WITH M2.5 X 12.7MM MATING SCREWS (SLOT HEAD)	SUPPLIED
A29E821255M25S	NO LOGO COVER TOP	BULK
A29E921250M25S	NORTECH LOGO COVER TOP	BULK
A30E120100	COVER BOTTOM	BULK
C88E000204M25S	NO LOGO	PACKAGED
C88E000203M25S	NORTECH LOGO	PACKAGED

PART#	WITH M2.6 X 12.7MM MATING SCREWS (SLOT HEAD)	SUPPLIED
A29E821255M26S	NO LOGO COVER TOP	BULK
A29E921250M26S	NORTECH LOGO COVER TOP	BULK
A30E120100	COVER BOTTOM	BULK
C88E000204M26S	NO LOGO	PACKAGED
C88E000203M26S	NORTECH LOGO	PACKAGED

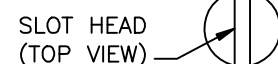
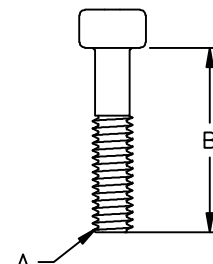
PART#	WITH M3 X 12.7MM MATING SCREWS (SLOT HEAD)	SUPPLIED
A29E821255M3S	NO LOGO COVER TOP	BULK
A29E921250M3S	NORTECH LOGO COVER TOP	BULK
A30E120100	COVER BOTTOM	BULK
C88E000204M3S	NO LOGO	PACKAGED
C88E000203M3S	NORTECH LOGO	PACKAGED

PART#	WITH #4-40 X 1/2" MATING SCREWS (PHILLIPS HEAD)	SUPPLIED
A29E821255PS	NO LOGO COVER TOP	BULK
A29E921250PS	NORTECH LOGO COVER TOP	BULK
A30E120100	COVER BOTTOM	BULK
C88E000204PS	NO LOGO	PACKAGED
C88E000203PS	NORTECH LOGO	PACKAGED

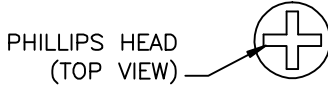
THIS IS A CONTROLLED DOCUMENT AND IS SUBJECT TO CHANGE. CONTACT NORTHERN TECHNOLOGIES ENGINEERING FOR THE LATEST REVISION.

REVISIONS				
ZONE	REV	DESCRIPTION	DATE	APPROVED

FILLISTER HEAD MATING SCREW



SLOT HEAD (TOP VIEW)



PHILLIPS HEAD (TOP VIEW)

THREAD (A)	LENGTH (B)	HEAD STYLE	MATERIAL	PLATING
#4-40 UNC	1/2 INCH	SLOT	COLD ROLL STEEL	ZINC
#4-40 UNC	7/16 INCH	SLOT	COLD ROLL STEEL	ZINC
M2.5 X .45MM	12.7 MM	SLOT	LOW CARBON STEEL	ZINC
M2.6 X .45MM	12.7 MM	SLOT	LOW CARBON STEEL	ZINC
M3 X .5MM	12.7 MM	SLOT	LOW CARBON STEEL	ZINC
#4-40 UNC	1/2 INCH	PHILLIPS	LOW CARBON STEEL	ZINC

UNLESS OTHERWISE SPECIFIED 1. ALL DIMENSIONS ARE IN INCHES [MM] 2. DIMENSIONS ARE TYPICAL		Northern Technologies <small>THIS DRAWING IS THE PROPERTY OF NORTHERN TECHNOLOGIES AND SHOULD NOT BE REPRODUCED WITHOUT NORTHERN TECHNOLOGIES WRITTEN PERMISSION.</small>		
DRAWN JSD		PART NUMBER SEE PART NUMBER INFORMATION		
CHECKED SCN		DESCRIPTION CM 25 METAL COVER		
ISSUED		SIZE B	CODE 200_103	REV
20-MAR-05		DWG NO. 0002-200-103		
20-MAR-05		SCALE NTS		SHEET 2 OF 2