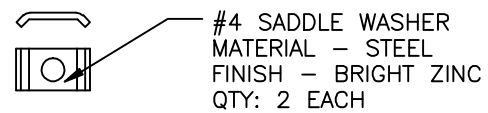
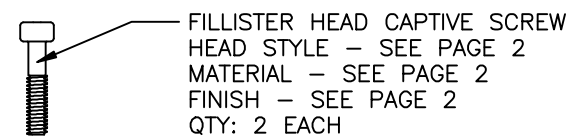
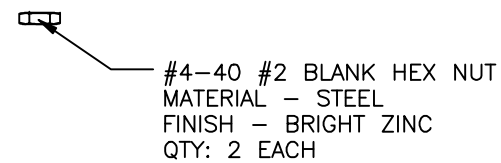
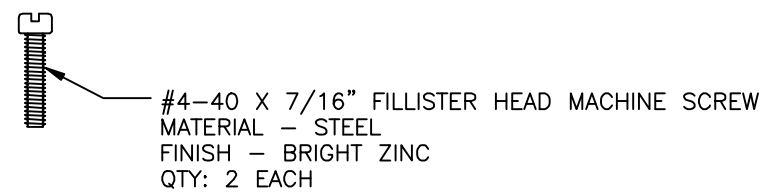
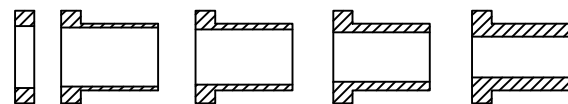
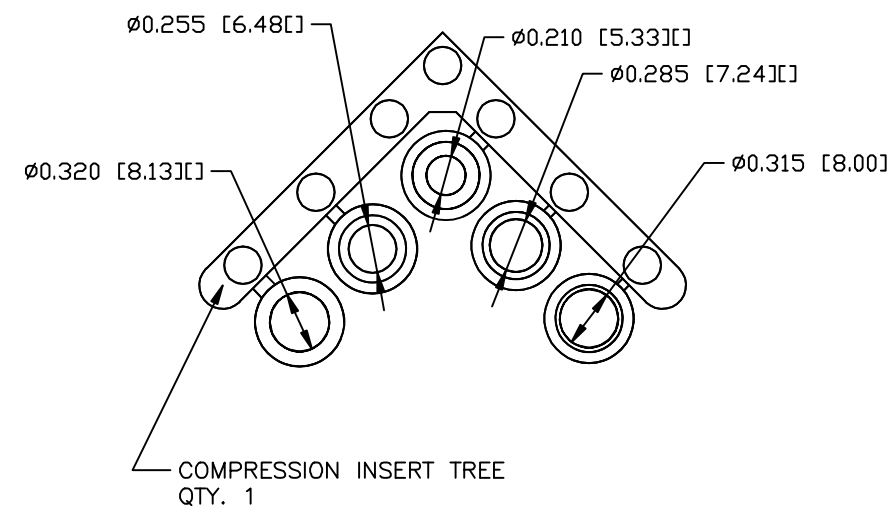
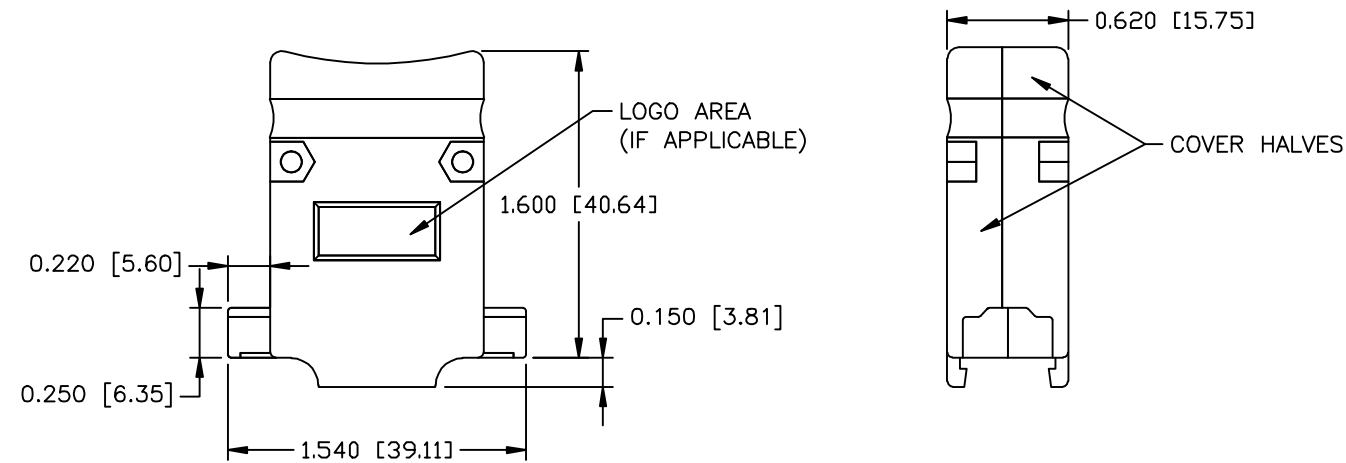
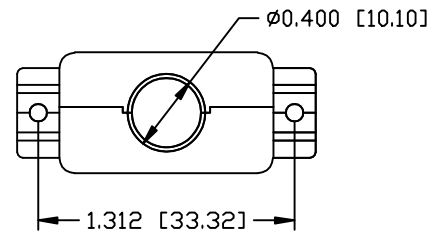


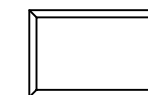
REVISIONS

ZONE	REV	DESCRIPTION	DATE	APPROVED
	A	ECN 0755	12-NOV-14	



NO LOGO

NORTECH LOGO



CONNECTOR COVER:

- 1.MATERIAL: ZINC ALLOY
- 2.FINISH: NICKEL PLATING PER NTC SPECIFICATION N/T 000400
- 3.DIMENSIONS: INCHES [MM]
- 4.TOLERANCE: ±0.015 [0.381]

COMPRESSION INSERT TREE

- 1.MATERIAL: THERMOPLASTIC
- 2.COLOR: BLACK
- 3.DUROMETER: 75 ±5 TYPE A PER ASTM D2240
- 4.DIMENSIONS: INCHES [MM]
- 5.TOLERANCE: ±0.020 [0.508]

THIS IS A CONTROLLED DOCUMENT AND IS SUBJECT TO CHANGE. CONTACT NORTHERN TECHNOLOGIES ENGINEERING FOR THE LATEST REVISION.

UNLESS OTHERWISE SPECIFIED		Northern Technologies <small>THIS DRAWING IS THE PROPERTY OF NORTHERN TECHNOLOGIES AND SHOULD NOT BE REPRODUCED WITHOUT NORTHERN TECHNOLOGIES WRITTEN PERMISSION.</small>		
1. ALL DIMENSIONS ARE IN INCHES (MM) 2. DIMENSIONS ARE TYPICAL				
DRAWN JSD		PART NUMBER SEE PART NUMBER INFORMATION		
CHECKED SCN		DESCRIPTION CM 15 METAL COVER		
ISSUED		SIZE B	CODE 200_102N	DWG NO. 0002-200-102N
29-JUL-13		REV		
29-JUL-13		SCALE NTS	SHEET 1 OF 2	

PART NUMBER INFORMATION

PART#	WITH #4-40 X 1/2" CAPTIVE SCREWS (SLOT HEAD)	SUPPLIED
N29E821153	NO LOGO COVER TOP	BULK
N29E921150	NORTECH LOGO COVER TOP	BULK
N30E110100	COVER BOTTOM	BULK
N88E000211	NO LOGO	PACKAGED
N88E000207	NORTECH LOGO	PACKAGED

PART#	WITH #4-40 X 7/16" CAPTIVE SCREWS (SLOT HEAD)	SUPPLIED
N29E8211531	NO LOGO COVER TOP	BULK
N29E9211501	NORTECH LOGO COVER TOP	BULK
N30E110100	COVER BOTTOM	BULK
N88E0002111	NO LOGO	PACKAGED
N88E0002071	NORTECH LOGO	PACKAGED

PART#	WITH M2.5 X 12.7MM CAPTIVE SCREWS (SLOT HEAD)	SUPPLIED
N29E821153M25S	NO LOGO COVER TOP	BULK
N29E921150M25S	NORTECH LOGO COVER TOP	BULK
N30E110100	COVER BOTTOM	BULK
N88E000211M25S	NO LOGO	PACKAGED
N88E000207M25S	NORTECH LOGO	PACKAGED

PART#	WITH M2.6 X 12.7MM CAPTIVE SCREWS (SLOT HEAD)	SUPPLIED
N29E821153M26S	NO LOGO COVER TOP	BULK
N29E921150M26S	NORTECH LOGO COVER TOP	BULK
N30E110100	COVER BOTTOM	BULK
N88E000211M26S	NO LOGO	PACKAGED
N88E000207M26S	NORTECH LOGO	PACKAGED

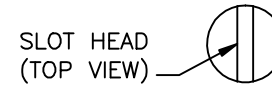
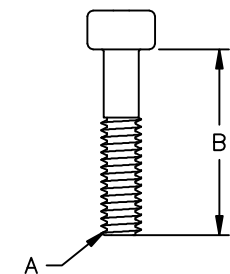
PART#	WITH M3 X 12.7MM CAPTIVE SCREWS (SLOT HEAD)	SUPPLIED
N29E821153M3S	NO LOGO COVER TOP	BULK
N29E921150M3S	NORTECH LOGO COVER TOP	BULK
N30E110100	COVER BOTTOM	BULK
N88E000211M3S	NO LOGO	PACKAGED
N88E000207M3S	NORTECH LOGO	PACKAGED

PART#	WITH #4-40 X 1/2" CAPTIVE SCREWS (PHILLIPS HEAD)	SUPPLIED
N29E821153PS	NO LOGO COVER TOP	BULK
N29E921150PS	NORTECH LOGO COVER TOP	BULK
N30E110100	COVER BOTTOM	BULK
N88E000211PS	NO LOGO	PACKAGED
N88E000207PS	NORTECH LOGO	PACKAGED

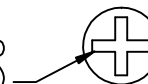
THIS IS A CONTROLLED DOCUMENT AND IS SUBJECT TO CHANGE. CONTACT NORTHERN TECHNOLOGIES ENGINEERING FOR THE LATEST REVISION.

REVISIONS				
ZONE	REV	DESCRIPTION	DATE	APPROVED

FILLISTER HEAD CAPTIVE SCREW



SLOT HEAD (TOP VIEW)



PHILLIPS HEAD (TOP VIEW)

THREAD (A)	LENGTH (B)	HEAD STYLE	MATERIAL	PLATING
#4-40 UNC	1/2 INCH	SLOT	COLD ROLL STEEL	ZINC
#4-40 UNC	7/16 INCH	SLOT	COLD ROLL STEEL	ZINC
M2.5 X .45MM	12.7 MM	SLOT	LOW CARBON STEEL	ZINC
M2.6 X .45MM	12.7 MM	SLOT	LOW CARBON STEEL	ZINC
M3 X .5MM	12.7 MM	SLOT	LOW CARBON STEEL	ZINC
#4-40 UNC	1/2 INCH	PHILLIPS	LOW CARBON STEEL	ZINC

UNLESS OTHERWISE SPECIFIED 1. ALL DIMENSIONS ARE IN INCHES [MM] 2. DIMENSIONS ARE TYPICAL		Northern Technologies <small>THIS DRAWING IS THE PROPERTY OF NORTHERN TECHNOLOGIES AND SHOULD NOT BE REPRODUCED WITHOUT NORTHERN TECHNOLOGIES WRITTEN PERMISSION.</small>		
DRAWN JSD		PART NUMBER SEE PART NUMBER INFORMATION DESCRIPTION CM 15 METAL COVER Ni		
29-JUL-13		SIZE B	CODE 200_102N	DWG NO. 0002-200-102N
CHECKED SCN	29-JUL-13	REVISIONS		REV
ISSUED	29-JUL-13	SCALE NTS	SHEET 2 OF 2	