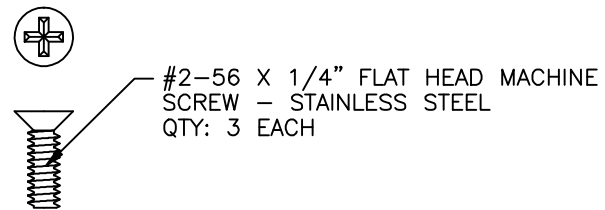
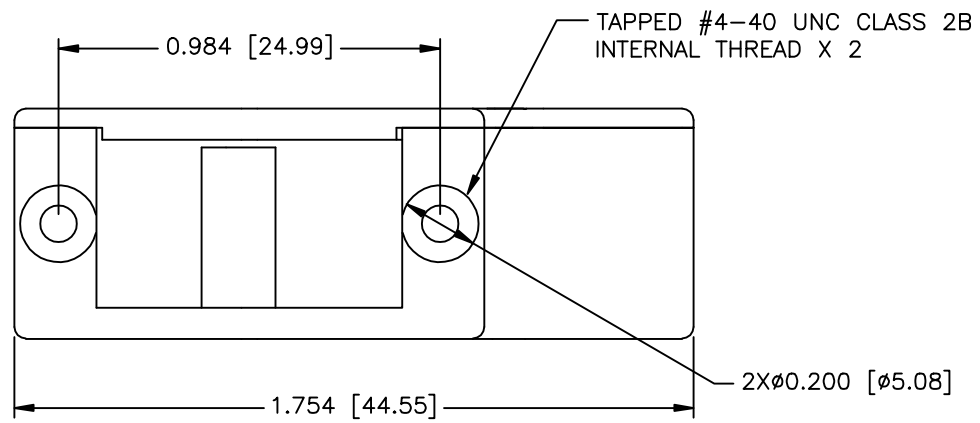
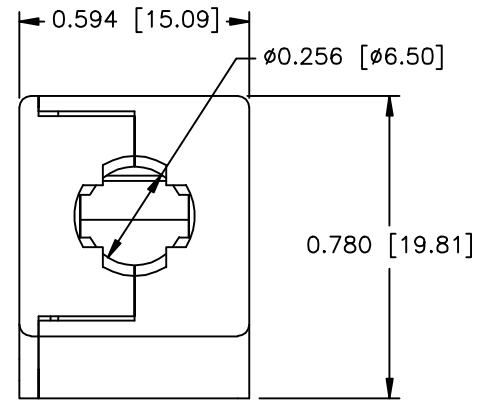
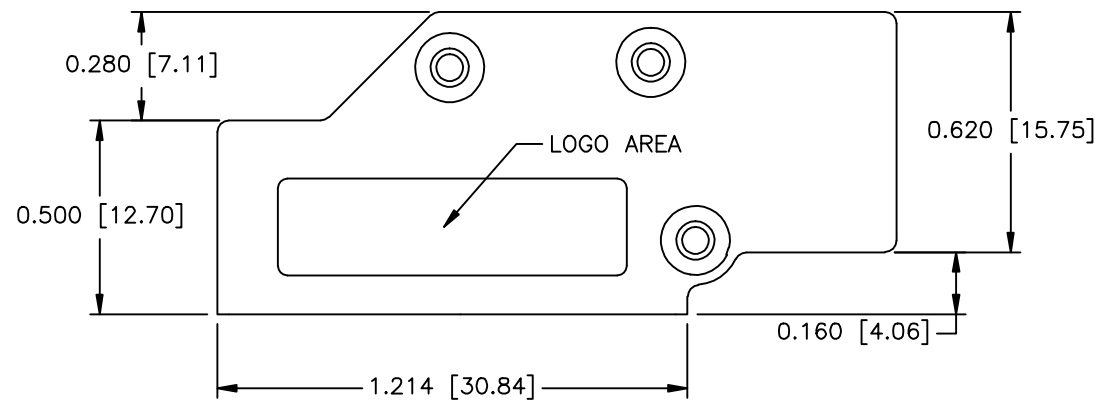
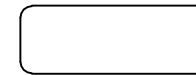


REVISIONS				
ZONE	REV	DESCRIPTION	DATE	APPROVED
	A	ECN0700	02-JAN-12	



NO LOGO



PART NUMBER INFORMATION

PART#	FINISH	LOGO STYLE	SUPPLIED
N30E600000	NICKEL	NO LOGO	BULK
N88E600000	NICKEL	NO LOGO	PACKAGED
A30E600000	ZINC	OBSOLETE	
C88E600000	ZINC	OBSOLETE	

CONNECTOR COVER:

- 1.MATERIAL: ZINC ALLOY
- 2.FINISH: SEE PART NUMBER INFORMATION
- 3.DIMENSIONS: INCHES [MM]
- 4.TOLERANCE: ± 0.015 [0.381]

UNLESS OTHERWISE SPECIFIED 1. ALL DIMENSIONS ARE IN INCHES (MM) 2. DIMENSIONS ARE TYPICAL		Northern Technologies <small>THIS DRAWING IS THE PROPERTY OF NORTHERN TECHNOLOGIES AND SHOULD NOT BE REPRODUCED WITHOUT NORTHERN TECHNOLOGIES WRITTEN PERMISSION.</small>		
DRAWN JSD		PART NUMBER SEE PART NUMBER INFORMATION		
30-SEP-05		DESCRIPTION CM ETHERNET 09 90 DEGREE EXIT		
CHECKED SCN	30-SEP-05	SIZE B	CODE 200_100	DWG NO. 0002-200-100
ISSUED	30-SEP-05	SCALE 2:1		REV SHEET 1 OF 1